

# KD-Validated Anti-C-terminal Src kinase Recombinant Rabbit Monoclonal Antibody



**Catalog #: 69740**

## Aliases

CSK; C-Terminal Src Kinase; CSK, Non-Receptor Tyrosine Kinase; Tyrosine-Protein Kinase  
CSK; Protein-Tyrosine Kinase CYL; C-Src Tyrosine Kinase; C-Src Kinase; EC 2.7.10.2; EC  
2.7.10

## Background

Gene Name: CSK  
NCBI Gene Entry: [1445](#)  
UniProt Entry: [P41240](#)

## Application Information

Molecular Weight: Predicted, 51 kDa, observed, 48 kDa  
Clonality: Rabbit monoclonal antibody  
Clone ID: 23GB1920  
Species Reactivity: Human, mouse, rat  
Applications Tested: Western blotting (WB), flow cytometry (FCM), immunocytochemistry (IC)

## Immunogen

A synthesized peptide derived from human CSK

## Isotype

Rabbit IgG

## Storage Buffer

Supplied in PBS (pH 7.4) containing 50% glycerol, and 0.02% sodium azide.

## Storage

Store at -20 °C for one year.

## Recommended Dilutions

Western Blotting (WB): 1:1,000-1:5,000  
Flow Cytometry (FCM): 1:2,000  
Immunocytochemistry (IC): 1:100-1:1,000

**Note:** This product is for research use only.

---

### SUPPORT

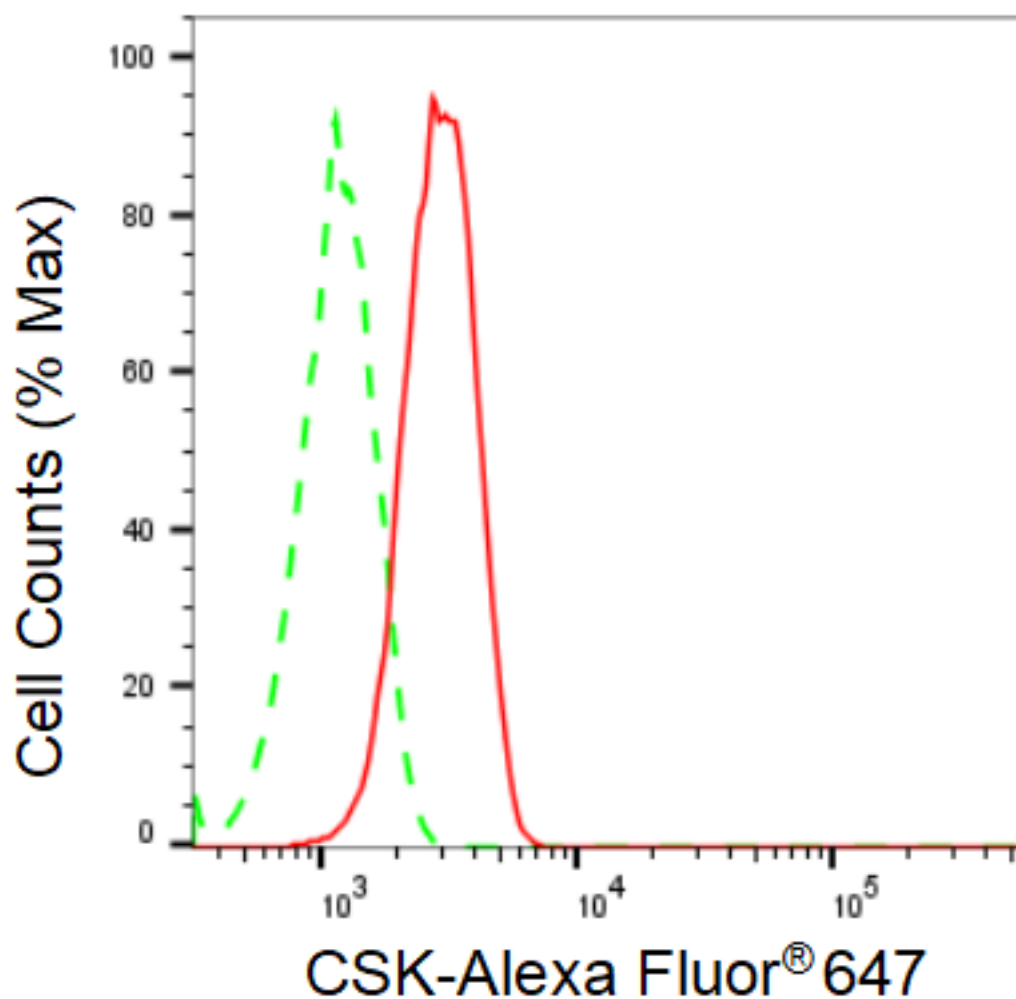
SUPPORT@GENUINBIOTECH.COM  
TEL: +1-540-855-7041

### ORDERS

SALES@GENUINBIOTECH.COM  
FAX: +1-540-855-7041

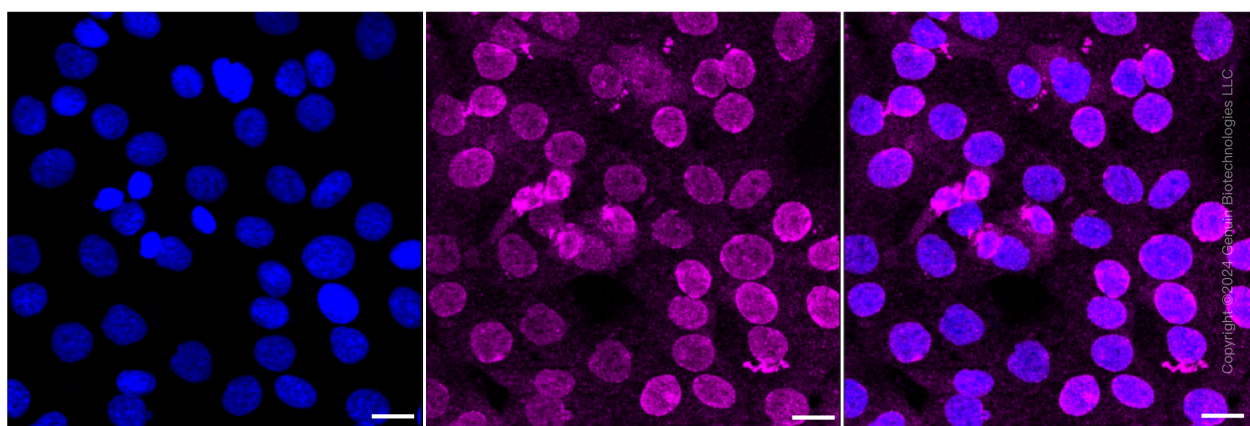
[WWW.GENUINBIOTECH.COM](http://WWW.GENUINBIOTECH.COM)

**Validation Data**



Copyright ©2025 Genuin Biotechnologies LLC

Flow cytometric analysis of CSK expression in HT-1080 cells using anti-CSK antibody (Cat#69740, 1:2000). Green, isotype control; red, CSK.



Copyright ©2024 Genuin Biotechnologies LLC

Immunocytochemical staining of HT-1080 cells with C-terminal Src kinase antibody (Cat#69740, 1:1,000). Nuclei were stained blue with DAPI; C-terminal Src kinase was stained magenta with

**SUPPORT**

SUPPORT@GENUINBIOTECH.COM  
TEL: +1-540-855-7041

**ORDERS**

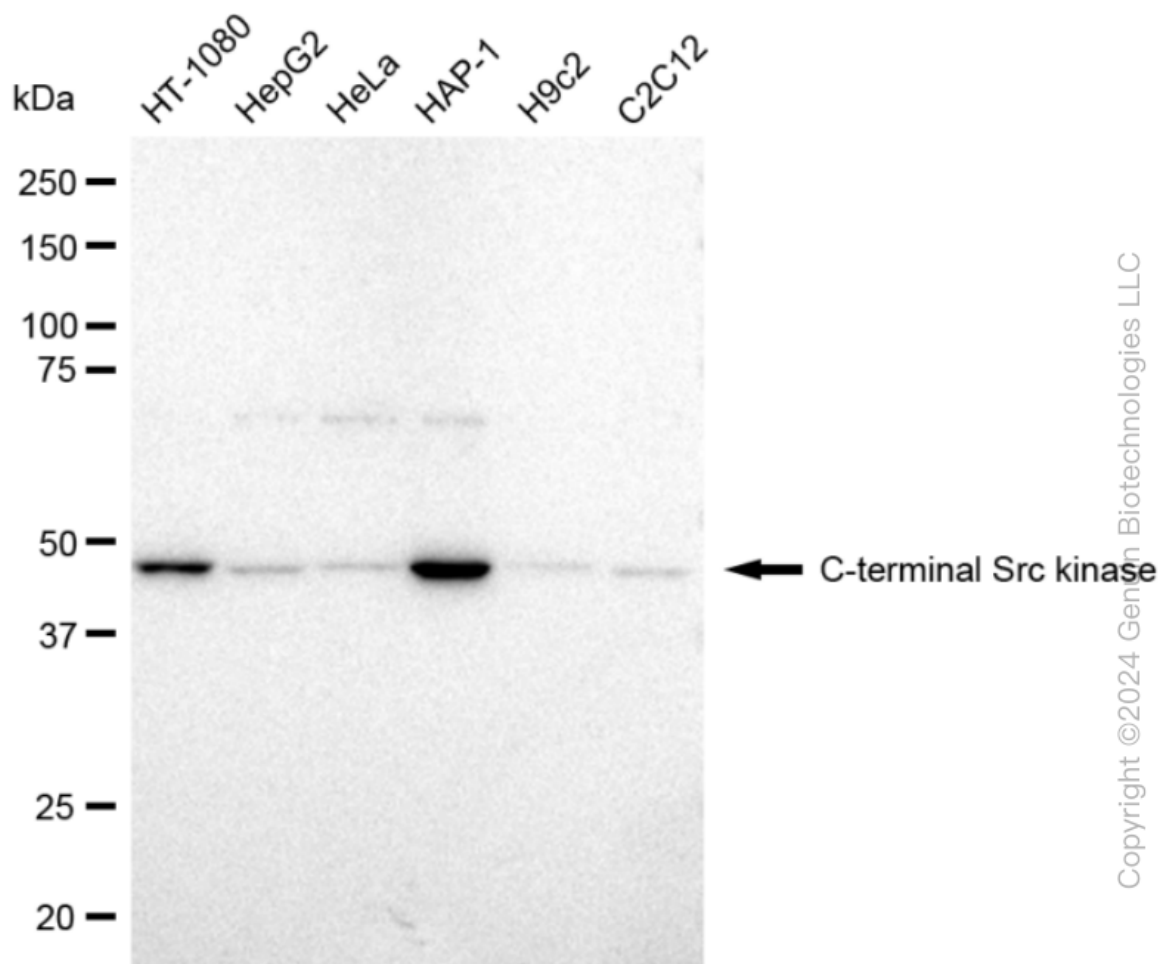
SALES@GENUINBIOTECH.COM  
FAX: +1-540-855-7041

**WWW.GENUINBIOTECH.COM**

## KD-Validated Anti-C-terminal Src kinase Recombinant Rabbit Monoclonal Antibody

PAGE 3

Alexa Fluor® 647. Images were taken using Leica stellaris 5. Protein abundance based on laser Intensity and smart gain: Medium. Scale bar: 20  $\mu$ m.



Western blotting analysis using anti-C-terminal Src kinase antibody (Cat#69740). Total cell lysates (30  $\mu$ g) from various cell lines were loaded and separated by SDS-PAGE. The blot was incubated with anti-C-terminal Src kinase antibody (Cat#69740, 1:5,000) and HRP-conjugated goat anti-rabbit secondary antibody (Cat#201, 1:20,000) respectively. Image was developed using FeQ™ ECL Substrate Kit (Cat#226).

### SUPPORT

SUPPORT@GENUINBIOTECH.COM  
TEL: +1-540-855-7041

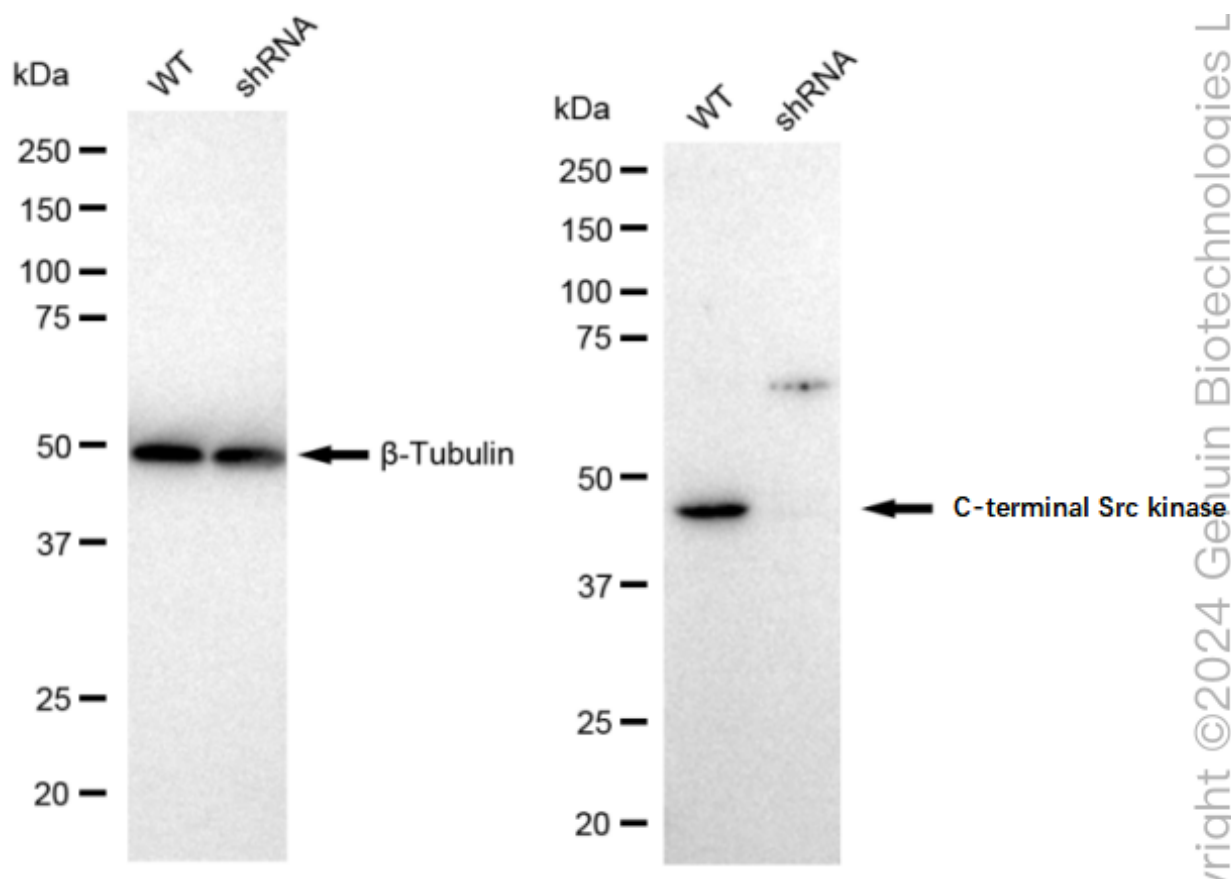
### ORDERS

SALES@GENUINBIOTECH.COM  
FAX: +1-540-855-7041

WWW.GENUINBIOTECH.COM

## KD-Validated Anti-C-terminal Src kinase Recombinant Rabbit Monoclonal Antibody

PAGE 4



Western blotting analysis using anti-C-terminal Src kinase antibody (Cat#69740). C-terminal Src kinase expression in wild type (WT) and C-terminal Src kinase shRNA knockdown (KD) HeLa cells with 30  $\mu$ g of total cell lysates.  $\beta$ -Tubulin serves as a loading control. The blot was incubated with anti-C-terminal Src kinase antibody (Cat#69740, 1:5,000) and HRP-conjugated goat anti-rabbit secondary antibody (Cat#201, 1:20,000) respectively. Image was developed using FeQ™ ECL Substrate Kit (Cat#226).

### SUPPORT

SUPPORT@GENUINBIOTECH.COM  
TEL: +1-540-855-7041

### ORDERS

SALES@GENUINBIOTECH.COM  
FAX: +1-540-855-7041

WWW.GENUINBIOTECH.COM