

KD-Validated Anti-Glutathione synthetase Recombinant Rabbit Monoclonal Antibody



Catalog #: 69769

Aliases

GSS; Glutathione Synthetase; Glutathione Synthase; GSH Synthetase; EC 6.3.2.3; GSH-S; HEL-S-64p; HEL-S-88n; GSHS

Background

Gene Name: GSS

NCBI Gene Entry: [2937](#)

UniProt Entry: [P48637](#)

Application Information

Molecular Weight: Predicted, 52 kDa, observed, 49 kDa

Clonality: Rabbit monoclonal antibody

Clone ID: 23GB4385

Species Reactivity: Human, mouse, rat

Applications Tested: Western blotting (WB), flow cytometry (FCM), immunocytochemistry (IC)

Immunogen

A synthesized peptide derived from human Glutathione Synthetase

Isotype

Rabbit IgG

Storage Buffer

Supplied in PBS (pH 7.4) containing 50% glycerol, and 0.02% sodium azide.

Storage

Store at -20 °C for one year.

Recommended Dilutions

Western Blotting (WB): 1:1,000-1:5,000

Flow Cytometry (FCM): 1:2,000

Immunocytochemistry (IC): 1:100-1:1,000

Note: This product is for research use only.

Validation Data

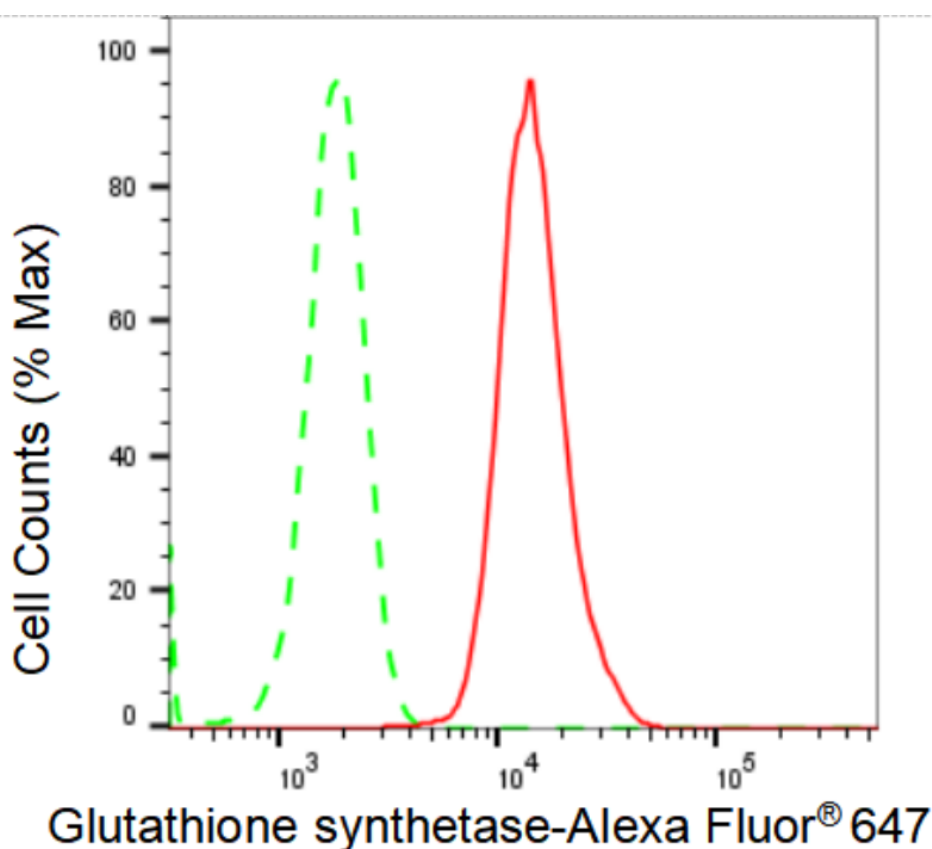
SUPPORT

SUPPORT@GENUINBIOTECH.COM
TEL: +1-540-855-7041

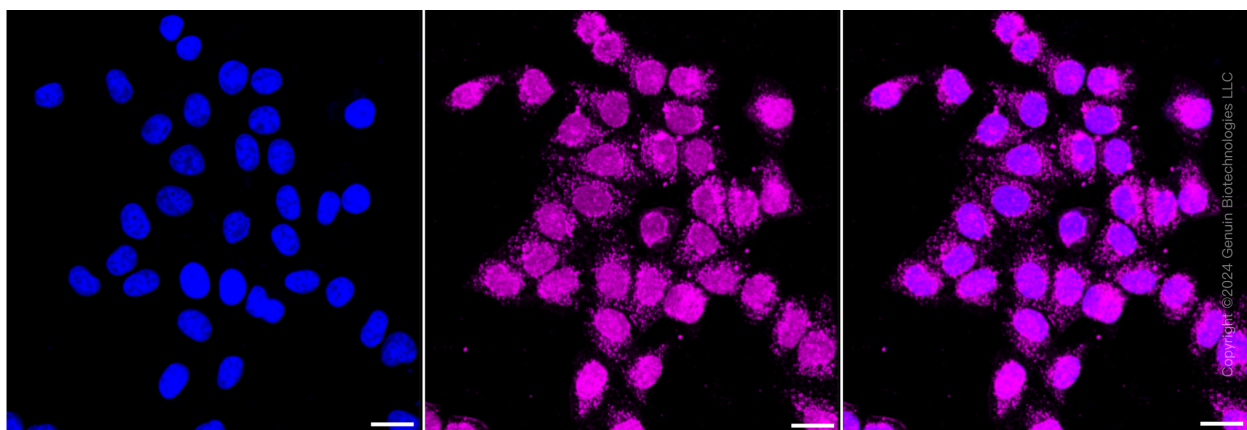
ORDERS

SALES@GENUINBIOTECH.COM
FAX: +1-540-855-7041

WWW.GENUINBIOTECH.COM



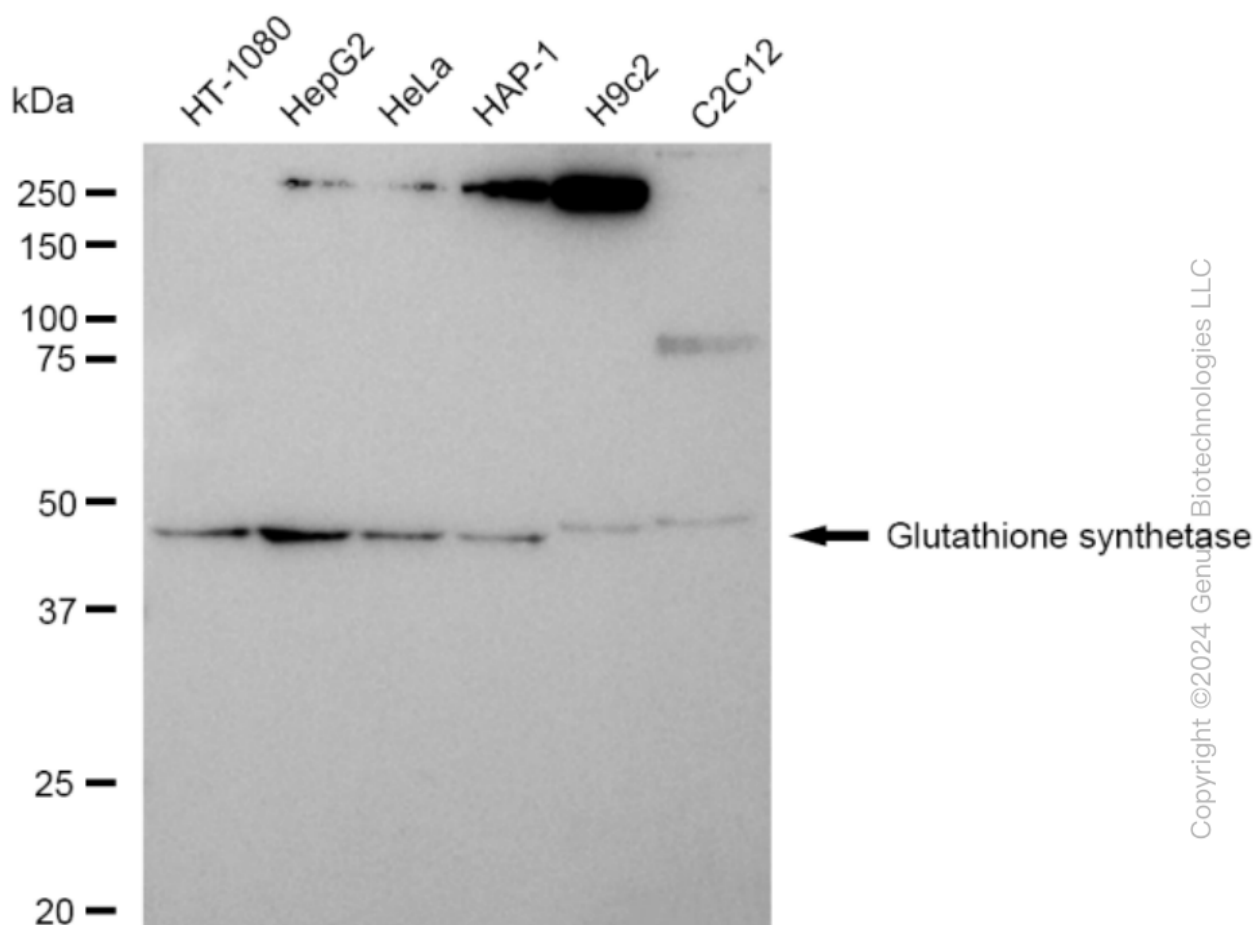
Flow cytometric analysis of Glutathione synthetase expression in HepG2 cells using Glutathione synthetase antibody (Cat#69769, 1:2,000). Green, isotype control; red, Glutathione synthetase.



Immunocytochemical staining of HepG2 cells with Glutathione synthetase antibody (Cat#69769, 1:1,000). Nuclei were stained blue with DAPI; Glutathione synthetase was stained magenta with Alexa Fluor® 647. Images were taken using Leica stellaris 5. Protein abundance based on laser Intensity and smart gain: Medium. Scale bar: 20 µm.

KD-Validated Anti-Glutathione synthetase Recombinant Rabbit Monoclonal Antibody

PAGE 3



Western blotting analysis using anti-Glutathione synthetase antibody (Cat#69769). Total cell lysates (30 μ g) from various cell lines were loaded and separated by SDS-PAGE. The blot was incubated with anti-Glutathione synthetase antibody (Cat#69769, 1:5,000) and HRP-conjugated goat anti-rabbit secondary antibody (Cat#201, 1:20,000) respectively. Image was developed using FeQ™ ECL Substrate Kit (Cat#226).

SUPPORT

SUPPORT@GENUINBIOTECH.COM
TEL: +1-540-855-7041

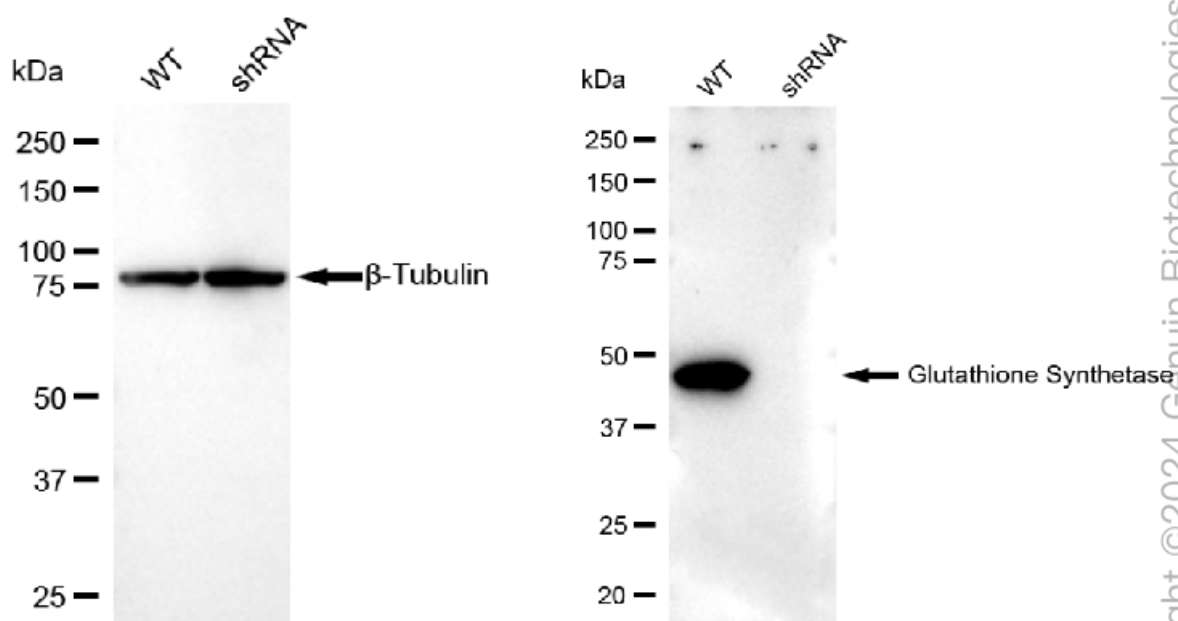
ORDERS

SALES@GENUINBIOTECH.COM
FAX: +1-540-855-7041

WWW.GENUINBIOTECH.COM

KD-Validated Anti-Glutathione synthetase Recombinant Rabbit Monoclonal Antibody

PAGE 4



Western blotting analysis using anti-Glutathione Synthetase antibody (Cat#69769). Glutathione Synthetase expression in wild type (WT) and Glutathione Synthetase shRNA knockdown (KD) HeLa cells with 30 µg of total cell lysates. Hsp90 α serves as a loading control. The blot was incubated with anti-Glutathione Synthetase antibody (Cat#69769, 1:5,000) and HRP-conjugated goat anti-rabbit secondary antibody (Cat#201, 1:20,000) respectively. Image was developed using FeQ™ ECL Substrate Kit (Cat#226).

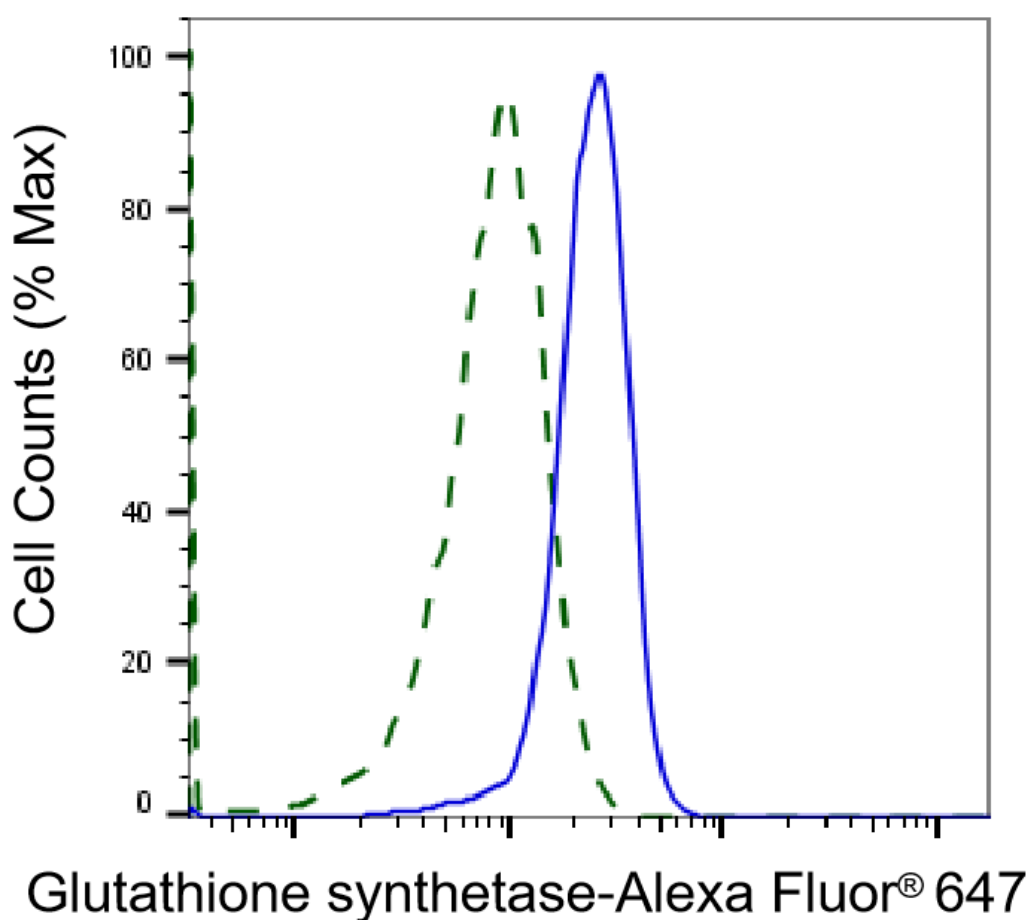
SUPPORT

SUPPORT@GENUINBIOTECH.COM
TEL: +1-540-855-7041

ORDERS

SALES@GENUINBIOTECH.COM
FAX: +1-540-855-7041

WWW.GENUINBIOTECH.COM



Copyright ©2025 Genuin Biotechnologies LLC

Validation of Glutathione synthetase knockdown using flow cytometry. Wild-type(WT, Blue) and knockdown(KD, Green) HeLa cells were stained with anti- Glutathione synthetase antibody (Cat#69769, 1:2,000) and analyzed using BD flow cytometer.