

KD-Validated Anti-KMT6 / EZH2 Recombinant Rabbit Monoclonal Antibody



Catalog #: 69932

Aliases

Enhancer Of Zeste 2 Polycomb Repressive Complex 2 Subunit; ENX-1; KMT6; KMT6A; Histone-Lysine N-Methyltransferase EZH2; Lysine N-Methyltransferase 6; Enhancer Of Zeste Homolog 2; EZH1; Enhancer Of Zeste (Drosophila) Homolog 2; Enhancer Of Zeste Homolog 2 (Drosophila); EC 2.1.1.356; EC 2.1.1.43; EC 2.1.1; EZH2b; ENX1; WVS2; WVS

Background

Gene Name: EZH2

NCBI Gene Entry: [2146](#)

UniProt Entry: [Q15910](#)

Application Information

Molecular Weight: Predicted, 85 kDa, observed, 98 kDa

Clonality: Rabbit monoclonal antibody

Clone ID: 23GB835

Species Reactivity: Human, mouse, rat

Applications Tested: Western blotting (WB), flow cytometry (FCM), immunocytochemistry (IC)

Immunogen

A synthesized peptide derived from human KMT6 / EZH2

Isotype

Rabbit IgG

Storage Buffer

Supplied in PBS (pH 7.4) containing 50% glycerol, and 0.02% sodium azide.

Storage

Store at -20 °C for one year.

Recommended Dilutions

Western Blotting (WB): 1:2,000-1:10,000

Flow Cytometry (FCM): 1:2,000

Immunocytochemistry (IC): 1:100-1:1,000

SUPPORT

SUPPORT@GENUINBIOTECH.COM
TEL: +1-540-855-7041

ORDERS

SALES@GENUINBIOTECH.COM
FAX: +1-540-855-7041

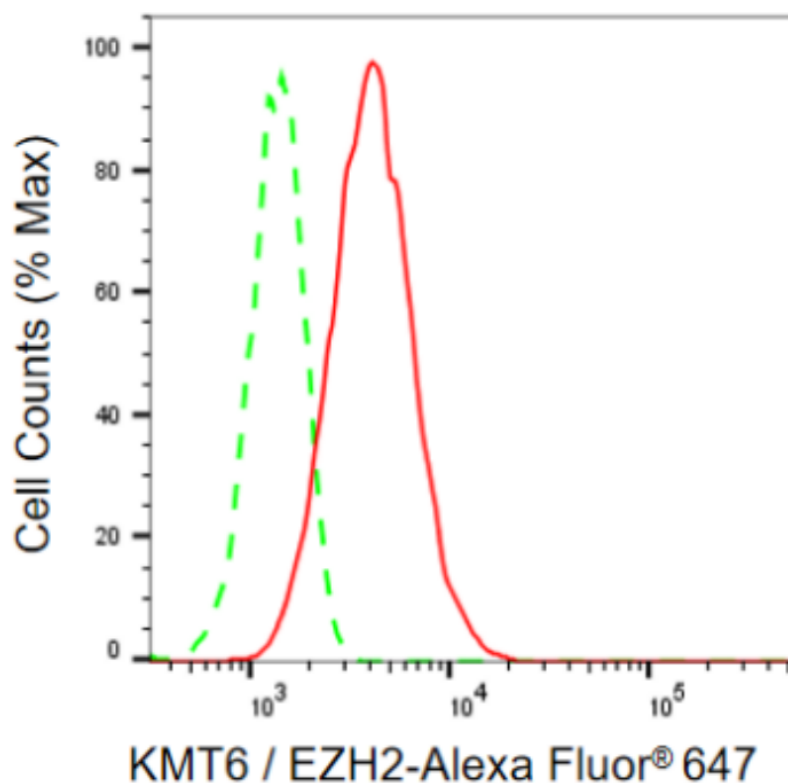
WWW.GENUINBIOTECH.COM

KD-Validated Anti-KMT6 / EZH2 Recombinant Rabbit Monoclonal Antibody

PAGE 2

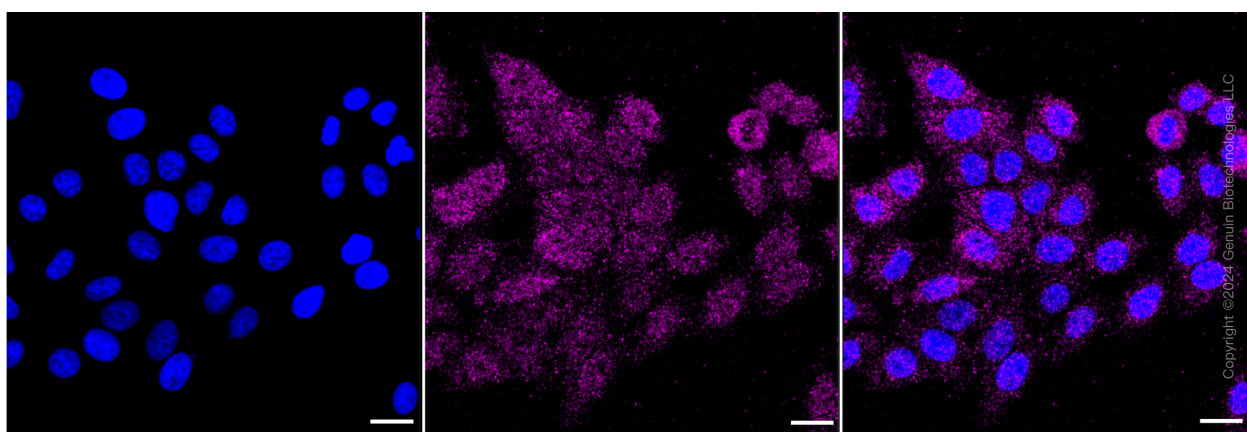
Note: This product is for research use only.

Validation Data



Copyright ©2024 Genuin Biotechnologies LLC

Flow cytometric analysis of KMT6 / EZH2 expression in HepG2 cells using KMT6 / EZH2 antibody (Cat#69932, 1:2,000). Green, isotype control; red, KMT6 / EZH2.



Immunocytochemical staining of HepG2 cells with KMT6 / EZH2 antibody (Cat#69932, 1:1,000). Nuclei were stained blue with DAPI; KMT6 / EZH2 was stained magenta with Alexa Fluor® 647. Images were taken using Leica stellaris 5. Protein abundance based on laser Intensity and smart gain: Medium. Scale bar: 20 μ m.

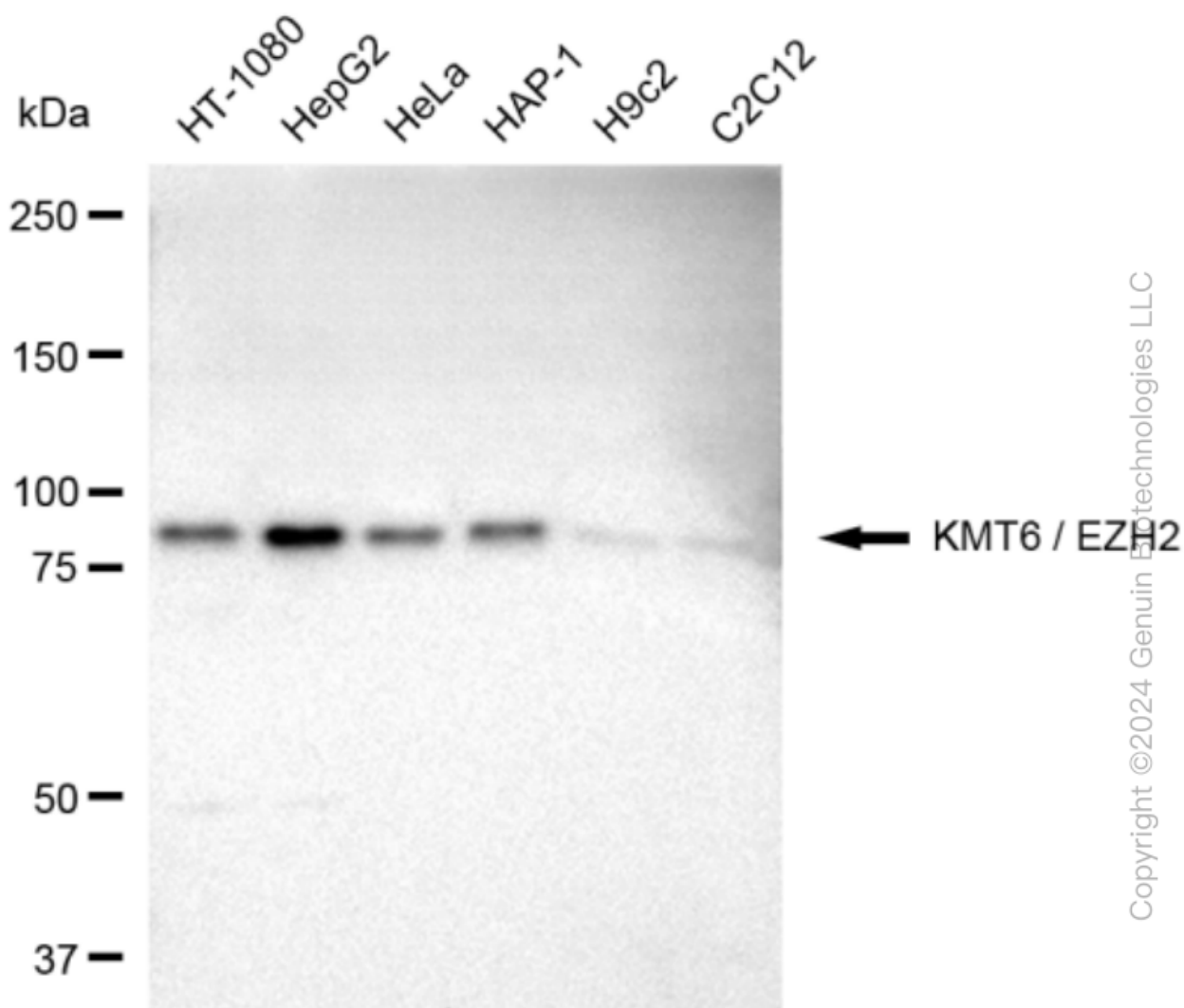
SUPPORT

SUPPORT@GENUINBIOTECH.COM
TEL: +1-540-855-7041

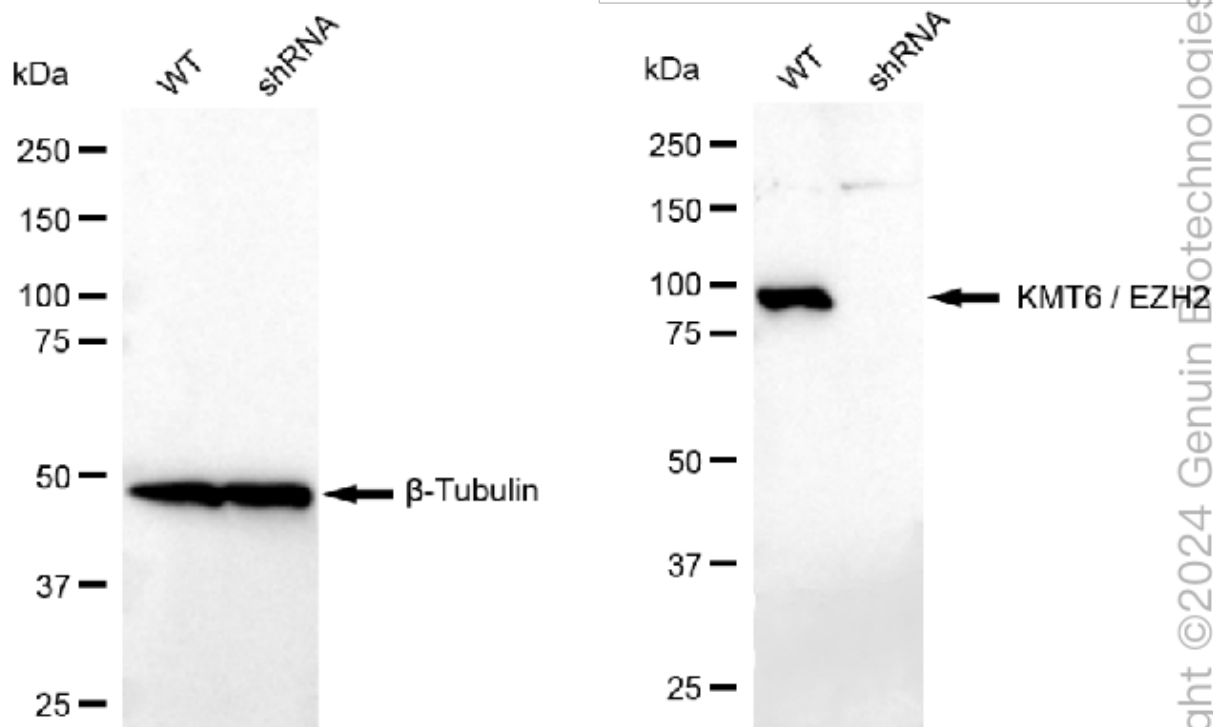
ORDERS

SALES@GENUINBIOTECH.COM
FAX: +1-540-855-7041

WWW.GENUINBIOTECH.COM



Western blotting analysis using anti-KMT6 / EZH2 antibody (Cat#69932). Total cell lysates (30 μ g) from various cell lines were loaded and separated by SDS-PAGE. The blot was incubated with anti-KMT6 / EZH2 antibody (Cat#69932, 1:10,000) and HRP-conjugated goat anti-rabbit secondary antibody (Cat#201, 1:50,000) respectively. Image was developed using FeQ™ ECL Substrate Kit (Cat#226).



Western blotting analysis using anti-KMT6 / EZH2 antibody (Cat#69932). KMT6 / EZH2 expression in wild type (WT) and KMT6 / EZH2 shRNA knockdown (KD) HeLa cells with 30 µg of total cell lysates. β-Tubulin serves as a loading control. The blot was incubated with anti-KMT6 / EZH2 antibody (Cat#69932, 1:10,000) and HRP-conjugated goat anti-rabbit secondary antibody (Cat#201, 1:20,000) respectively. Image was developed using FeQ™ ECL Substrate Kit (Cat#226).