

KO-Validated Anti-FERMT2 Mouse Monoclonal Antibody



Catalog #: 71114

Aliases

FERMT2; FERM Domain Containing Kindlin 2; KIND2; UNC112B; PLEKHC1; Mig-2; Pleckstrin Homology Domain Containing, Family C (With FERM Domain) Member 1; PH Domain-Containing Family C Member 1; Fermitin Family Homolog 2; Mitogen Inducible Gene-2; Fermitin Family Member 2; Kindlin-2; MIG2; Pleckstrin Homology Domain Containing, Family C Member 1; Pleckstrin Homology Domain-Containing Family C Member 1; Fermitin Family Homolog 2 (Drosophila); Mitogen Inducible Gene 2 Protein; Mitogen-Inducible Gene 2 Protein; Kindlin 2; UNC112; MIG-2

Background

Gene Name: FERMT2

NCBI Gene Entry: [10979](#)

UniProt Entry: [Q96AC1](#)

Application Information

Molecular Weight: Predicted, 78 kDa; observed, 73 kDa

Clonality: Mouse monoclonal antibody

Clone ID: 24GB6190

Species Reactivity: Human, mouse, rat

Applications Tested: Western blotting (WB), flow cytometry (FCM), immunocytochemistry (IC)

Immunogen

Recombinant protein of human FERMT2

Isotype

Mouse IgG2a

Storage Buffer

Supplied in PBS (pH 7.4) containing 50% glycerol, and 0.02% sodium azide.

Storage

Store at -20 °C for one year.

Recommended Dilutions

Western Blotting (WB): 1:1,000-1:5,000

Flow Cytometry (FCM): 1:2,000

SUPPORT

SUPPORT@GENUINBIOTECH.COM
TEL: +1-540-855-7041

ORDERS

SALES@GENUINBIOTECH.COM
FAX: +1-540-855-7041

WWW.GENUINBIOTECH.COM

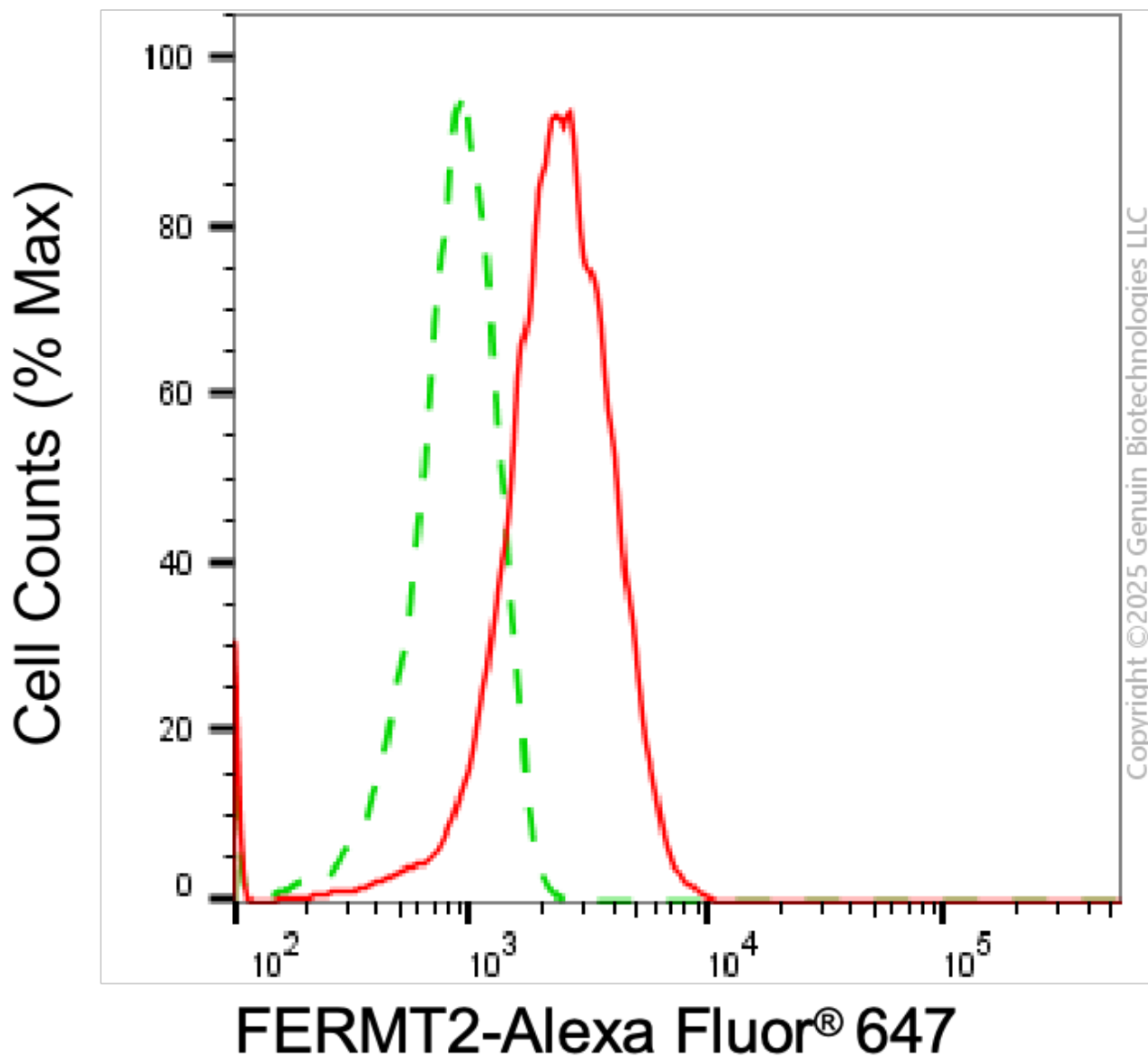
KO-Validated Anti-FERMT2 Mouse Monoclonal Antibody

PAGE 2

Immunocytochemistry (IC): 1:100-1:1,000

Note: This product is for research use only.

Validation Data



Flow cytometric analysis of FERMT2 expression in HepG2 cells using anti-FERMT2 antibody (Cat#71114, 1:2,000). Green, isotype control; red, FERMT2.

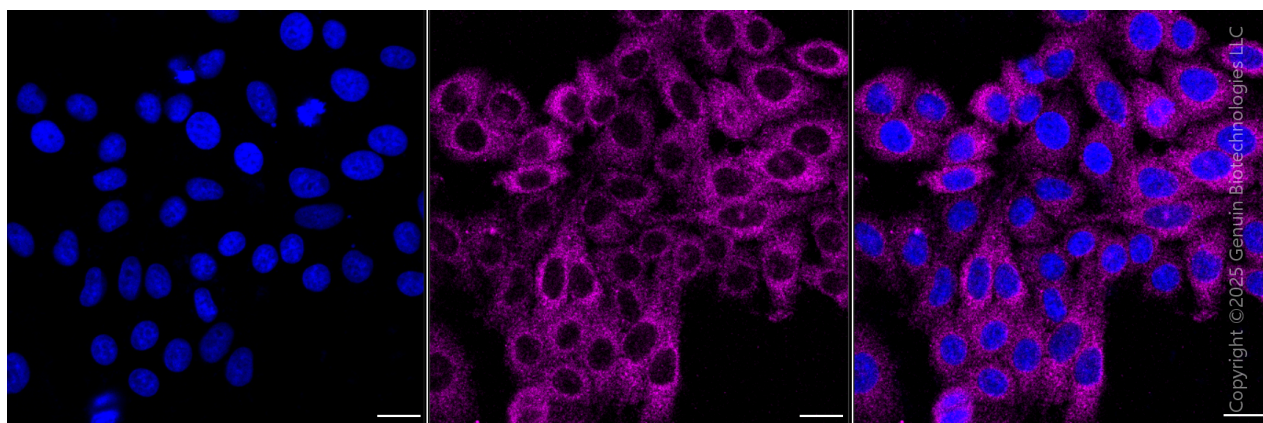
SUPPORT

SUPPORT@GENUINBIOTECH.COM
TEL: +1-540-855-7041

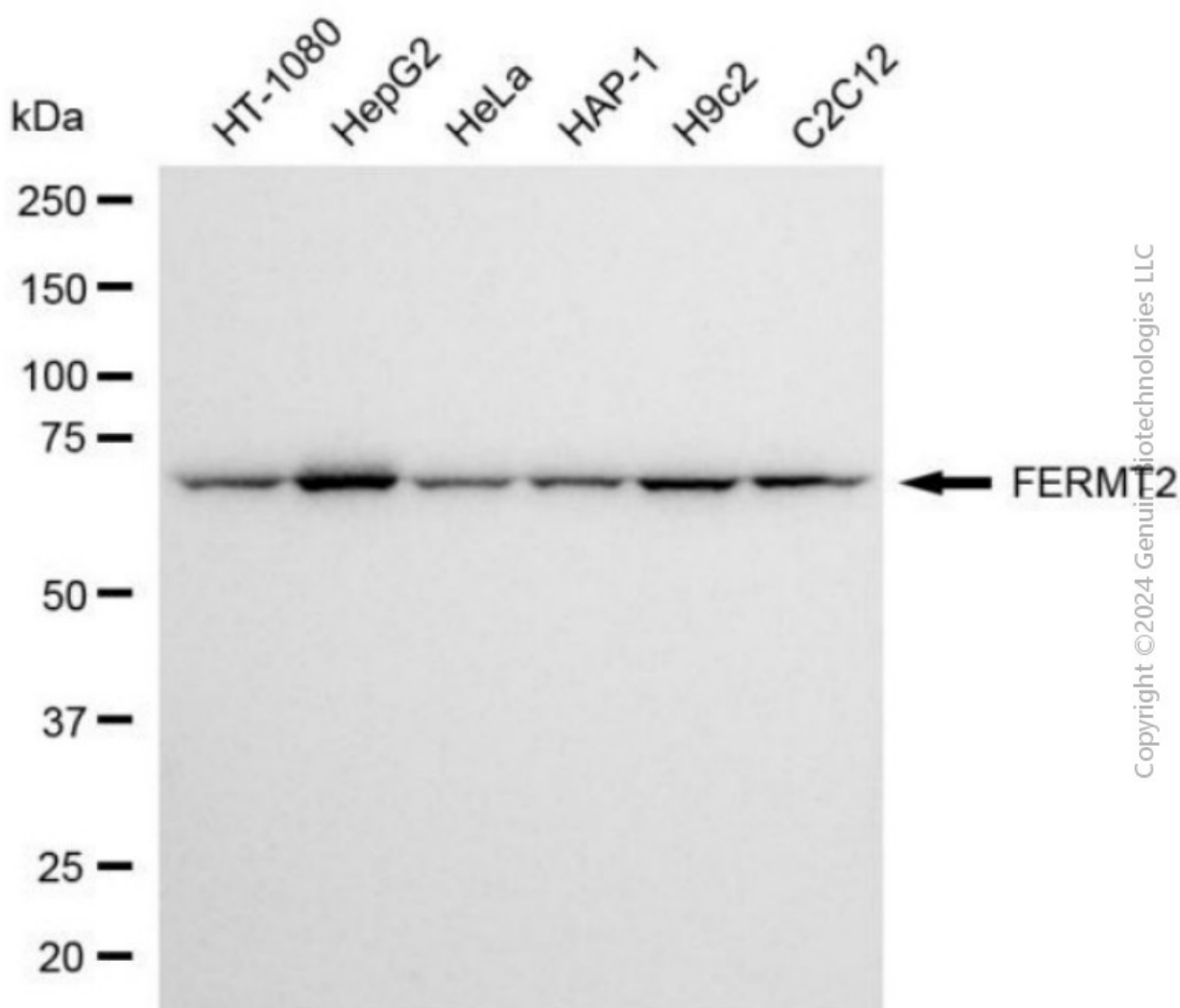
ORDERS

SALES@GENUINBIOTECH.COM
FAX: +1-540-855-7041

WWW.GENUINBIOTECH.COM



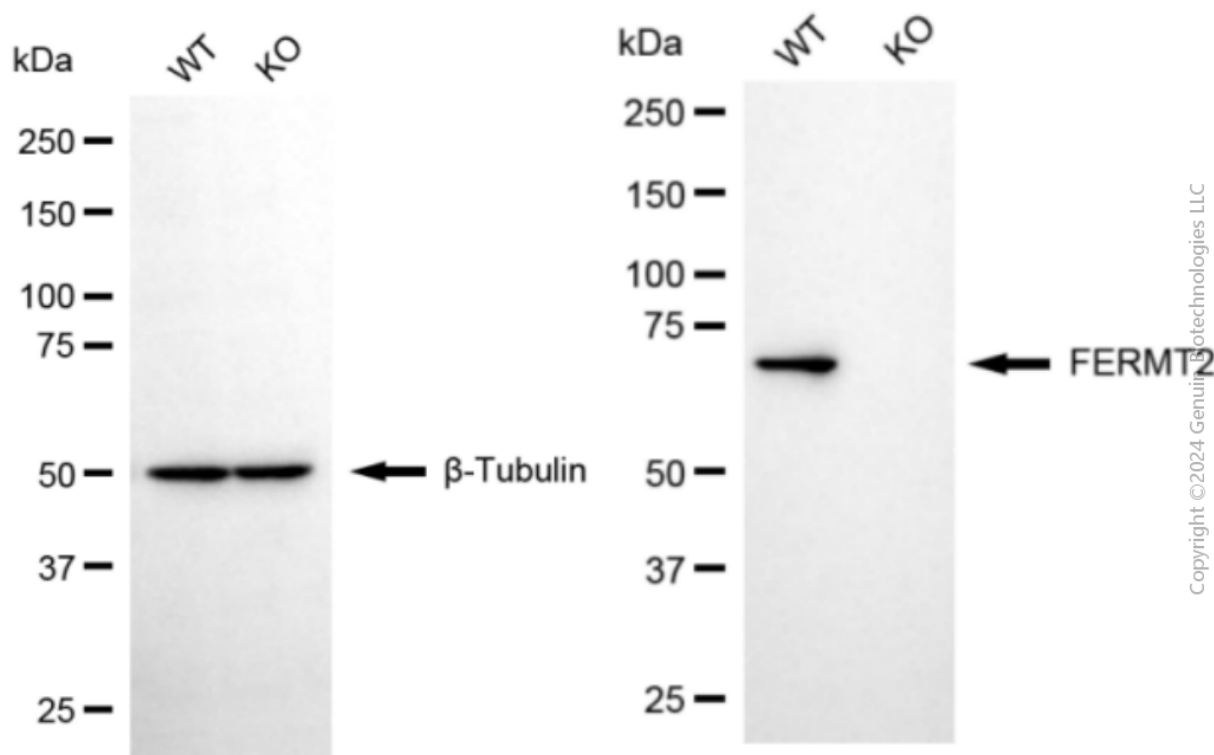
Immunocytochemical staining of HepG2 cells with anti-FERMT2 antibody (Cat#71114, 1:1,000) . Nuclei were stained blue with DAPI; FERMT2 was stained magenta with Alexa Fluor® 647. Images were taken using Leica stellaris 5. Protein abundance based on laser Intensity and Smart Gain□Low. Scale bar, 20 μm.



KO-Validated Anti-FERMT2 Mouse Monoclonal Antibody

PAGE 4

Western blotting analysis using anti-FERMT2 antibody (Cat#71114). Total cell lysates (30 µg) from various cell lines were loaded and separated by SDS-PAGE. The blot was incubated with anti-FERMT2 antibody (Cat#71114, 1:5,000) and HRP-conjugated goat anti-mouse secondary antibody (Cat#101, 1:20,000) respectively. Image was developed using NaQ™ ECL Substrate Kit (Cat#716).



Western blotting analysis using anti-FERMT2 antibody (Cat#71114). FERMT2 expression in wild type (WT) and FERMT2 knockout (KO) HSHC cells with 20 µg of total cell lysates. β-Tubulin serves as a loading control. The blot was incubated with anti-FERMT2 antibody (Cat#71114, 1:5,000) and HRP-conjugated goat anti-mouse secondary antibody (Cat#101, 1:20,000) respectively. Image was developed using NaQ™ ECL Substrate Kit (Cat#716).

SUPPORT

SUPPORT@GENUINBIOTECH.COM
TEL: +1-540-855-7041

ORDERS

SALES@GENUINBIOTECH.COM
FAX: +1-540-855-7041

WWW.GENUINBIOTECH.COM