

KO-Validated Anti-BCKDK Rabbit Polyclonal Antibody



Catalog #: 71137

Aliases

BCKDK; Branched Chain Keto Acid Dehydrogenase Kinase; [3-Methyl-2-Oxobutanoate Dehydrogenase [Lipoamide]] Kinase, Mitochondrial; Branched-Chain Alpha-Ketoacid Dehydrogenase Kinase; BCKDH Kinase; EC 2.7.11.4; BCKDHKIN; BDK; 3-Methyl-2-Oxobutanoate Dehydrogenase [Lipoamide] Kinase, Mitochondrial; Branched Chain Alpha-Ketoacid Dehydrogenase Kinase; Branched Chain Ketoacid Dehydrogenase Kinase; BCKD-Kinase; EC 2.7.11.1; EC 2.7.11; BCKDKD

Background

Gene Name: BCKDK

NCBI Gene Entry: [10295](#)

UniProt Entry: [O14874](#)

Application Information

Molecular Weight: Predicted, 46 kDa; observed, 42 kDa

Clonality: Rabbit polyclonal antibody

Species Reactivity: Human, mouse, rat

Applications Tested: Western blotting (WB)

Immunogen

A synthesized peptide derived from human BCKDK

Isotype

Rabbit IgG

Storage Buffer

Supplied in PBS (pH 7.4) containing 50% glycerol, and 0.02% sodium azide.

Storage

Store at -20 °C for one year.

Recommended Dilutions

Western Blotting (WB): 1:1,000-1:5,000

Note: This product is for research use only.

SUPPORT

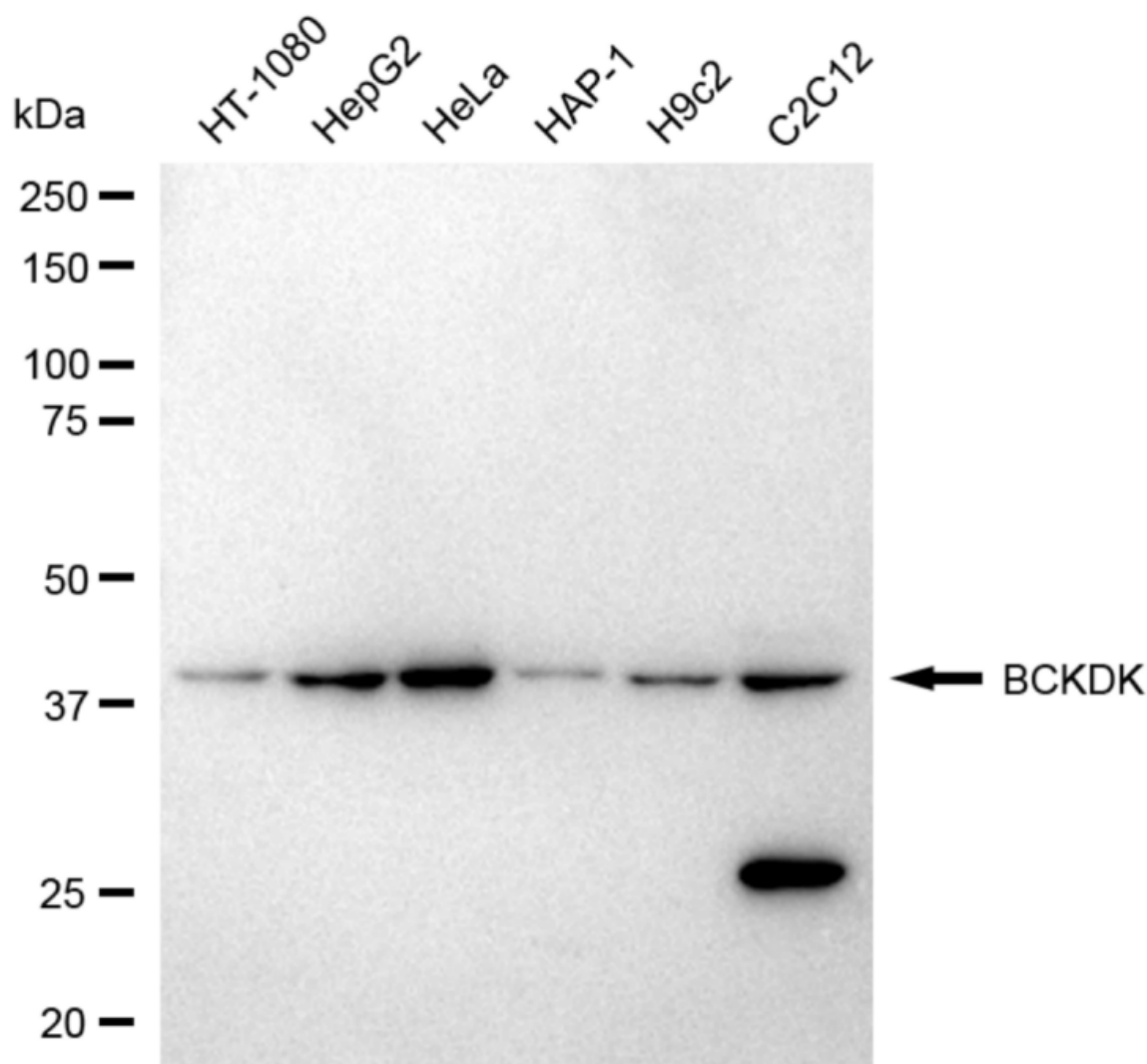
SUPPORT@GENUINBIOTECH.COM
TEL: +1-540-855-7041

ORDERS

SALES@GENUINBIOTECH.COM
FAX: +1-540-855-7041

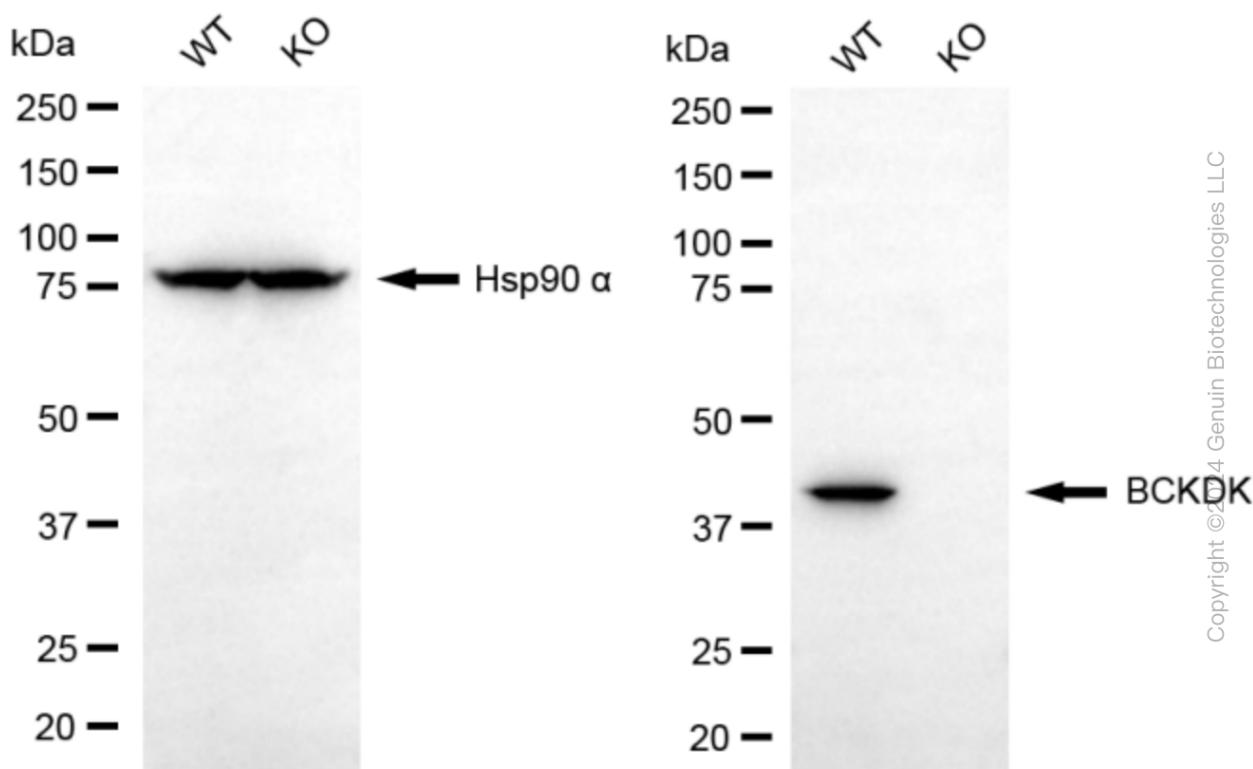
WWW.GENUINBIOTECH.COM

Validation Data



Copyright ©2024 Genuin Biotechnologies LLC

Western blotting analysis using anti-BCKDK antibody (Cat#71137). Total cell lysates (30 µg) from various cell lines were loaded and separated by SDS-PAGE. The blot was incubated with anti-BCKDK antibody (Cat#71137, 1:5,000) and HRP-conjugated goat anti-rabbit secondary antibody (Cat#201, 1:20,000) respectively. Image was developed using FeQ™ ECL Substrate Kit (Cat#226).



Western blotting analysis using anti-BCKDK antibody (Cat#71137). BCKDK expression in wild type (WT) and BCKDK knockout (KO) 293T cells with 20 μ g of total cell lysates. Hsp90 α serves as a loading control. The blot was incubated with anti-BCKDK antibody (Cat#71137, 1:5,000) and HRP-conjugated goat anti-rabbit secondary antibody (Cat#201, 1:20,000) respectively. Image was developed using NaQTM ECL Substrate Kit (Cat#716).