

KO-Validated Anti-CAMK2D Recombinant Rabbit Monoclonal Antibody



Catalog #: 71142

Aliases

CAMK2D; Calcium/Calmodulin Dependent Protein Kinase II Delta; CAMKD; Calcium/Calmodulin-Dependent Protein Kinase (CaM Kinase) II Delta; Calcium/Calmodulin-Dependent Protein Kinase Type II Subunit Delta; EC 2.7.11.17; Calcium/Calmodulin-Dependent Protein Kinase Type II Delta Chain; CaM Kinase II Delta Subunit; CaM Kinase II Subunit Delta; CaM-Kinase II Delta Chain; CaMK-II Delta Subunit; CaMK-II Subunit Delta; EC 2.7.11

Background

Gene Name: CAMK2D

NCBI Gene Entry: [817](#)

UniProt Entry: [Q13557](#)

Application Information

Molecular Weight: Predicted, 56 kDa, observed, 48 kDa

Clonality: Rabbit monoclonal antibody

Clone ID: 25GB605

Species Reactivity: Human, mouse, rat

Applications Tested: Western blotting (WB), flow cytometry (FCM)

Immunogen

A synthesized peptide derived from human CaMKII delta

Isotype

Rabbit IgG

Storage Buffer

Supplied in PBS (pH 7.4) containing 50% glycerol, and 0.02% sodium azide.

Storage

Store at -20 °C for one year.

Recommended Dilutions

Western Blotting (WB): 1:1,000-1:5,000

Flow Cytometry (FCM): 1:2,000

SUPPORT

SUPPORT@GENUINBIOTECH.COM
TEL: +1-540-855-7041

ORDERS

SALES@GENUINBIOTECH.COM
FAX: +1-540-855-7041

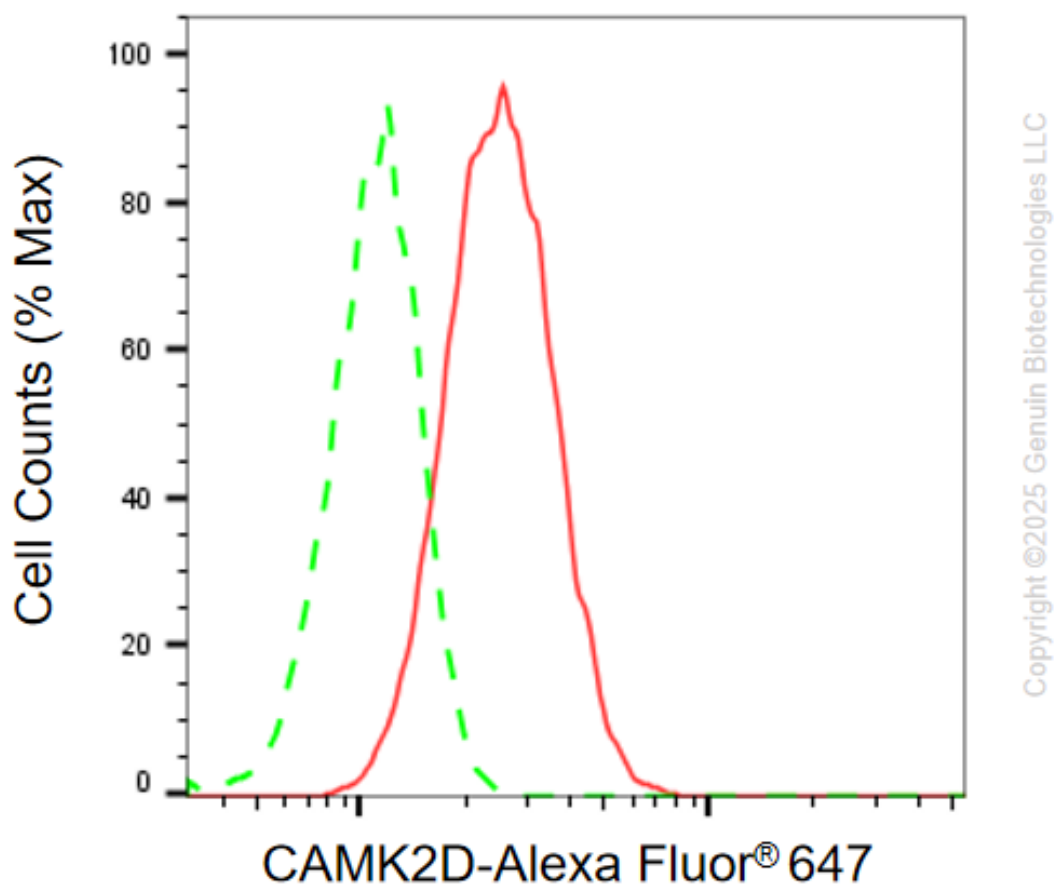
WWW.GENUINBIOTECH.COM

KO-Validated Anti-CAMK2D Recombinant Rabbit Monoclonal Antibody

PAGE 2

Note: This product is for research use only.

Validation Data



Flow cytometric analysis of CAMK2D expression in C2C12 cells using anti-CAMK2D antibody (Cat# 71142, 1:2,000). Green, isotype control; red, CAMK2D.

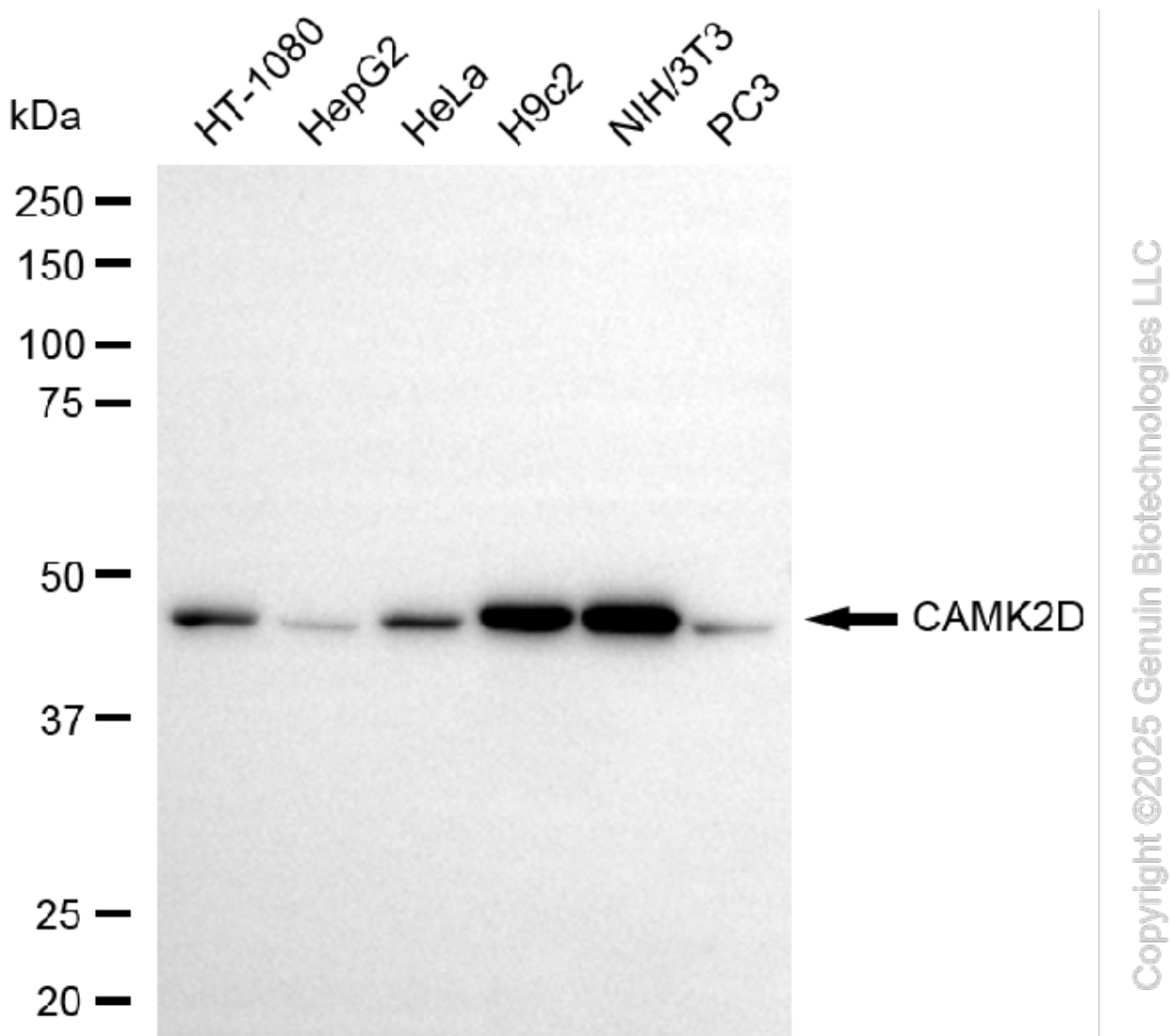
SUPPORT

SUPPORT@GENUINBIOTECH.COM
TEL: +1-540-855-7041

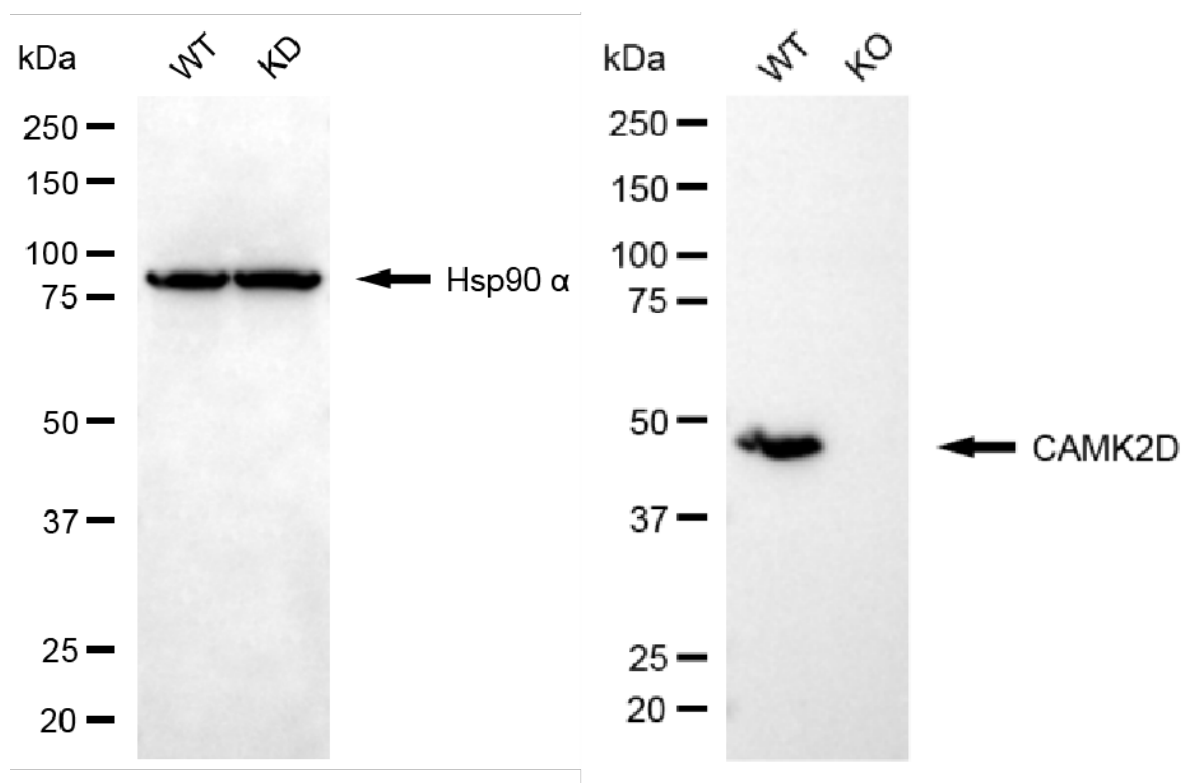
ORDERS

SALES@GENUINBIOTECH.COM
FAX: +1-540-855-7041

WWW.GENUINBIOTECH.COM



Western blotting analysis using anti-CAMK2D antibody (Cat#71142). Total cell lysates (30 μ g) from various cell lines were loaded and separated by SDS-PAGE. The blot was incubated with anti-CAMK2D antibody (Cat#71142, 1:5,000) and HRP-conjugated goat anti-rabbit secondary antibody (Cat#201, 1:20,000) respectively. Image was developed using NaQ™ ECL Substrate Kit (Cat#716).



Copyright ©2025 Genuin Biotechnologies LLC

Western blotting analysis using anti-CAMK2D antibody (Cat#71142). CAMK2D expression in wild type (WT) and CAMK2D knockout (KO) 293T cells with 20 µg of total cell lysates. Hsp90 α serves as a loading control. The blot was incubated with anti-CAMK2D antibody (Cat#71142, 1:5,000) and HRP-conjugated goat anti-rabbit secondary antibody (Cat#201, 1:20,000) respectively. Image was developed using NaQ™ ECL Substrate Kit (Cat#716).