

KO-Validated Anti-Cyclin Dependent Kinase 6 Recombinant Rabbit Monoclonal Antibody



Catalog #: 71144

Aliases

CDK6; Cyclin Dependent Kinase 6; PLSTIRE; Serine/Threonine-Protein Kinase PLSTIRE; Cell Division Protein Kinase 6; Cyclin-Dependent Kinase 6; EC 2.7.11.22; EC 2.7.11; MCPH12; CDKN6

Background

Gene Name: CDK6

NCBI Gene Entry: [1021](#)

UniProt Entry: [Q00534](#)

Application Information

Molecular Weight: Predicted, 37 kDa, observed, 36 kDa

Clonality: Rabbit monoclonal antibody

Clone ID: 25GB540

Species Reactivity: Human

Applications Tested: Western blotting (WB), flow cytometry (FCM)

Immunogen

A synthesized peptide derived from human CDK6

Isotype

Rabbit IgG

Storage Buffer

Supplied in PBS (pH 7.4) containing 50% glycerol, and 0.02% sodium azide.

Storage

Store at -20 °C for one year.

Recommended Dilutions

Western Blotting (WB): 1:4,000-1:20,000

Flow Cytometry (FCM): 1:2,000

Note: This product is for research use only.

Validation Data

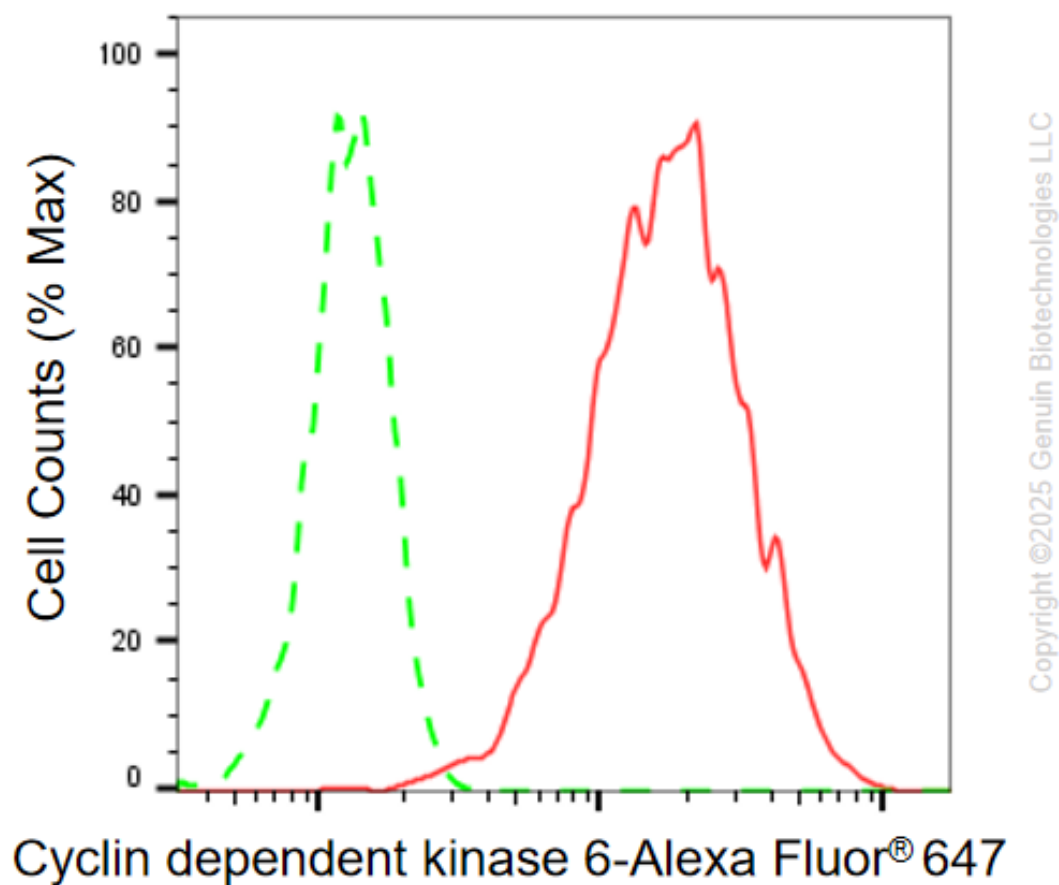
SUPPORT

SUPPORT@GENUINBIOTECH.COM
TEL: +1-540-855-7041

ORDERS

SALES@GENUINBIOTECH.COM
FAX: +1-540-855-7041

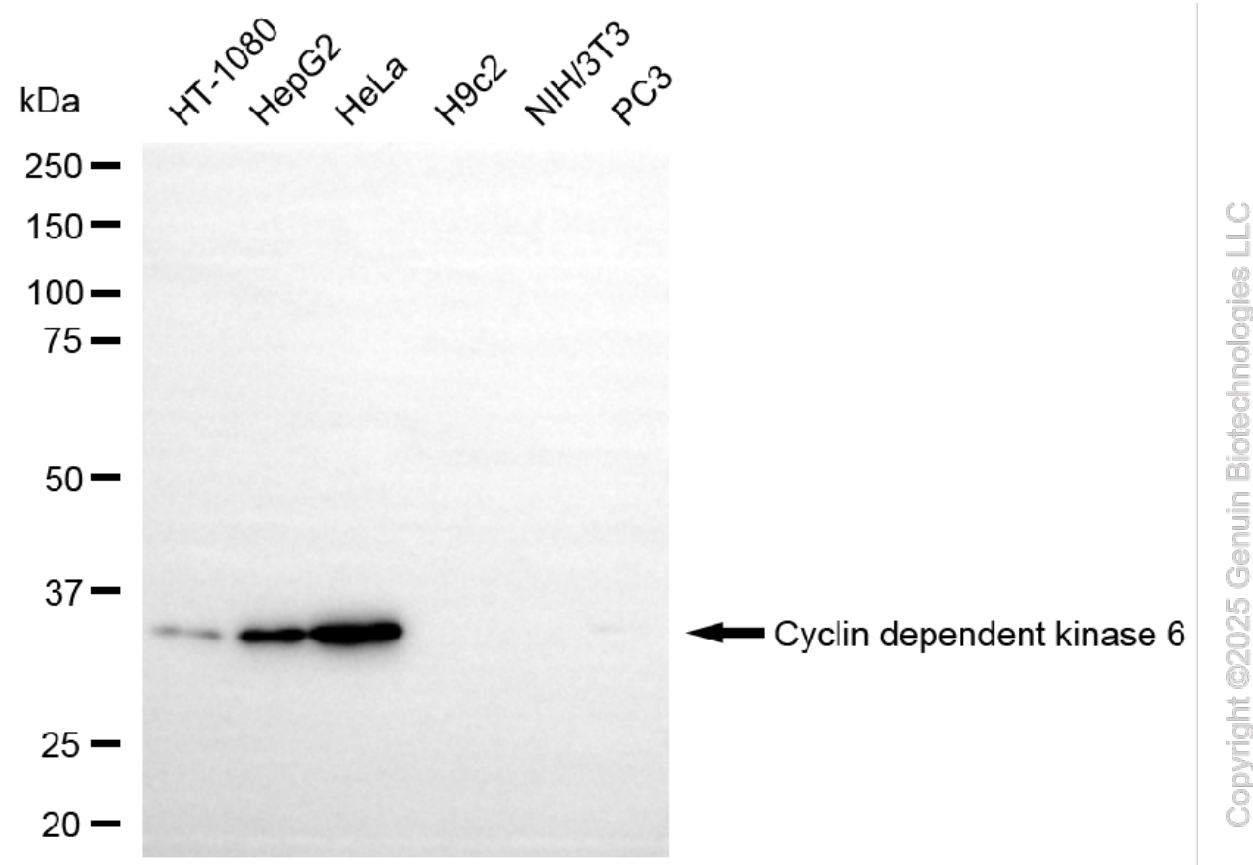
WWW.GENUINBIOTECH.COM



Flow cytometric analysis of Cyclin dependent kinase 6 expression in HAP-1 cells using anti-Cyclin dependent kinase 6 antibody (Cat# 71144, 1:2,000). Green, isotype control; red, Cyclin dependent kinase 6.

KO-Validated Anti-Cyclin Dependent Kinase 6 Recombinant Rabbit Monoclonal Antibody

PAGE 3



Western blotting analysis using anti-Cyclin dependent kinase 6 antibody (Cat#71144). Total cell lysates (30 μ g) from various cell lines were loaded and separated by SDS-PAGE. The blot was incubated with anti-Cyclin dependent kinase 6 antibody (Cat#71144, 1:20,000) and HRP-conjugated goat anti-rabbit secondary antibody (Cat#201, 1:20,000) respectively. Image was developed using NaQ™ ECL Substrate Kit (Cat#716).

SUPPORT

SUPPORT@GENUINBIOTECH.COM
TEL: +1-540-855-7041

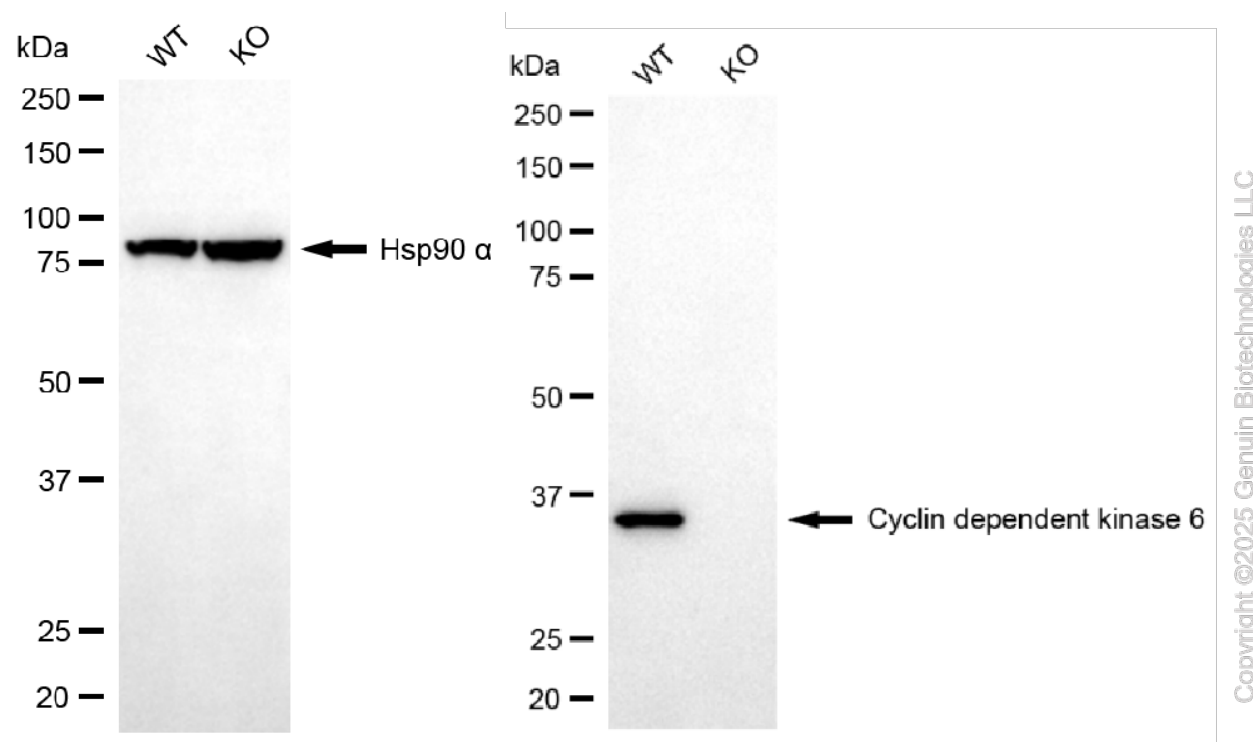
ORDERS

SALES@GENUINBIOTECH.COM
FAX: +1-540-855-7041

WWW.GENUINBIOTECH.COM

KO-Validated Anti-Cyclin Dependent Kinase 6 Recombinant Rabbit Monoclonal Antibody

PAGE 4



Western blotting analysis using anti-cyclin dependent kinase 6 antibody (Cat#71144). Cyclin dependent kinase 6 expression in wild-type (WT) and cyclin dependent kinase 6 (CDK6) knockout (KO) 293T cells with 20 µg of total cell lysates. Hsp90 α serves as a loading control. The blot was incubated with anti-cyclin dependent kinase 6 antibody (Cat#71144, 1:20,000) and HRP-conjugated goat anti-rabbit secondary antibody (Cat#201, 1:20,000) respectively. Image was developed using NaQ™ ECL Substrate Kit (Cat#716).

SUPPORT

SUPPORT@GENUINBIOTECH.COM
TEL: +1-540-855-7041

ORDERS

SALES@GENUINBIOTECH.COM
FAX: +1-540-855-7041

WWW.GENUINBIOTECH.COM