

KO-Validated Anti-Integrin Subunit Alpha 2 Recombinant Rabbit Monoclonal Antibody



Catalog #: 71145

Aliases

ITGA2; Integrin Subunit Alpha 2; GPIa; VLAA2; HPA-5; CD49B; Integrin, Alpha 2 (CD49B, Alpha 2 Subunit Of VLA-2 Receptor); Very Late Activation Receptor Subunit Alpha-2; Alpha 2 Subunit Of VLA-2 Receptor; CD49 Antigen-Like Family Member B; Platelet Membrane Glycoprotein Ia; Human Platelet Alloantigen 5 2 3; Alpha 2 Integrin; Integrin Alpha-2; Glycoprotein Ia; Very Late Activation Protein 2 Receptor, Alpha-2 Subunit; Very Late Activation Receptor Alpha-2 Subunit; Human Platelet Alloantigen System 5; Platelet Glycoprotein GPIa; Platelet Antigen Br; VLA-2 Subunit Alpha; CD49b Antigen; VLA-2; BR

Background

Gene Name: ITGA2

NCBI Gene Entry: [3673](#)

UniProt Entry: [P17301](#)

Application Information

Molecular Weight: Predicted, 129 kDa, observed, 150 kDa

Clonality: Rabbit monoclonal antibody

Clone ID: 25GB545

Species Reactivity: Human

Applications Tested: Western blotting (WB), flow cytometry (FCM)

Immunogen

A synthesized peptide derived from human Integrin alpha 2

Isotype

Rabbit IgG

Storage Buffer

Supplied in PBS (pH 7.4) containing 50% glycerol, and 0.02% sodium azide.

Storage

Store at -20 °C for one year.

Recommended Dilutions

Western Blotting (WB): 1:1,000-1:5,000

Flow Cytometry (FCM): 1:2,000

SUPPORT

SUPPORT@GENUINBIOTECH.COM
TEL: +1-540-855-7041

ORDERS

SALES@GENUINBIOTECH.COM
FAX: +1-540-855-7041

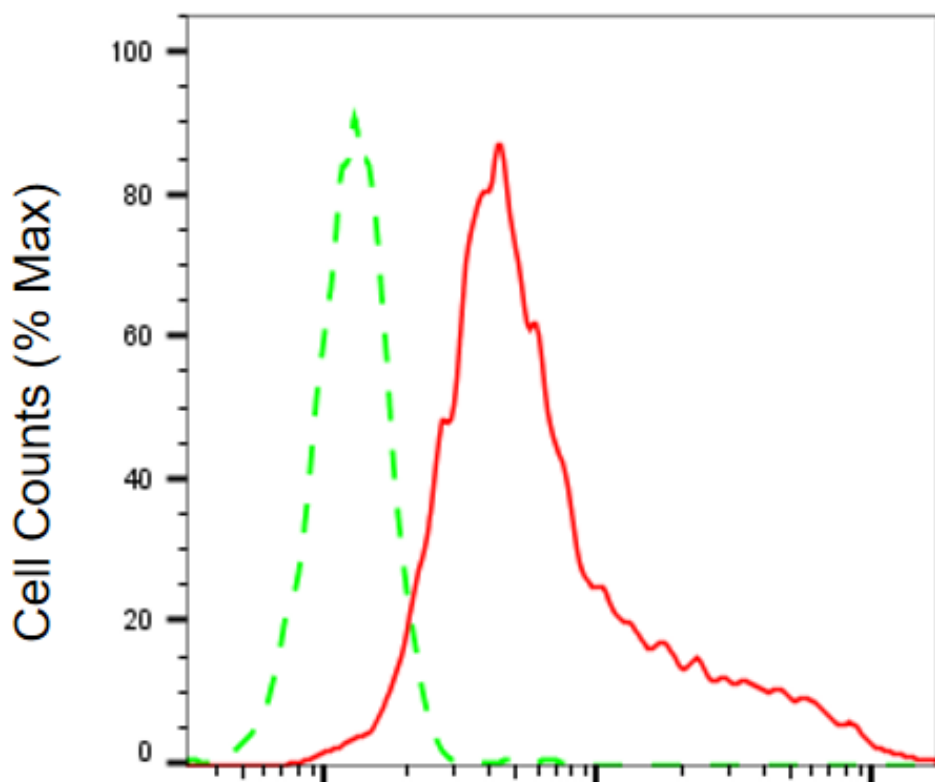
WWW.GENUINBIOTECH.COM

KO-Validated Anti-Integrin Subunit Alpha 2 Recombinant Rabbit Monoclonal Antibody

PAGE 2

Note: This product is for research use only.

Validation Data



Integrin subunit alpha 2-Alexa Fluor® 647

Flow cytometric analysis of Integrin subunit alpha 2 expression in HepG2 cells using anti-Integrin subunit alpha 2 antibody (Cat# 71145, 1:2,000). Green, isotype control; red, Integrin subunit alpha 2.

SUPPORT

SUPPORT@GENUINBIOTECH.COM
TEL: +1-540-855-7041

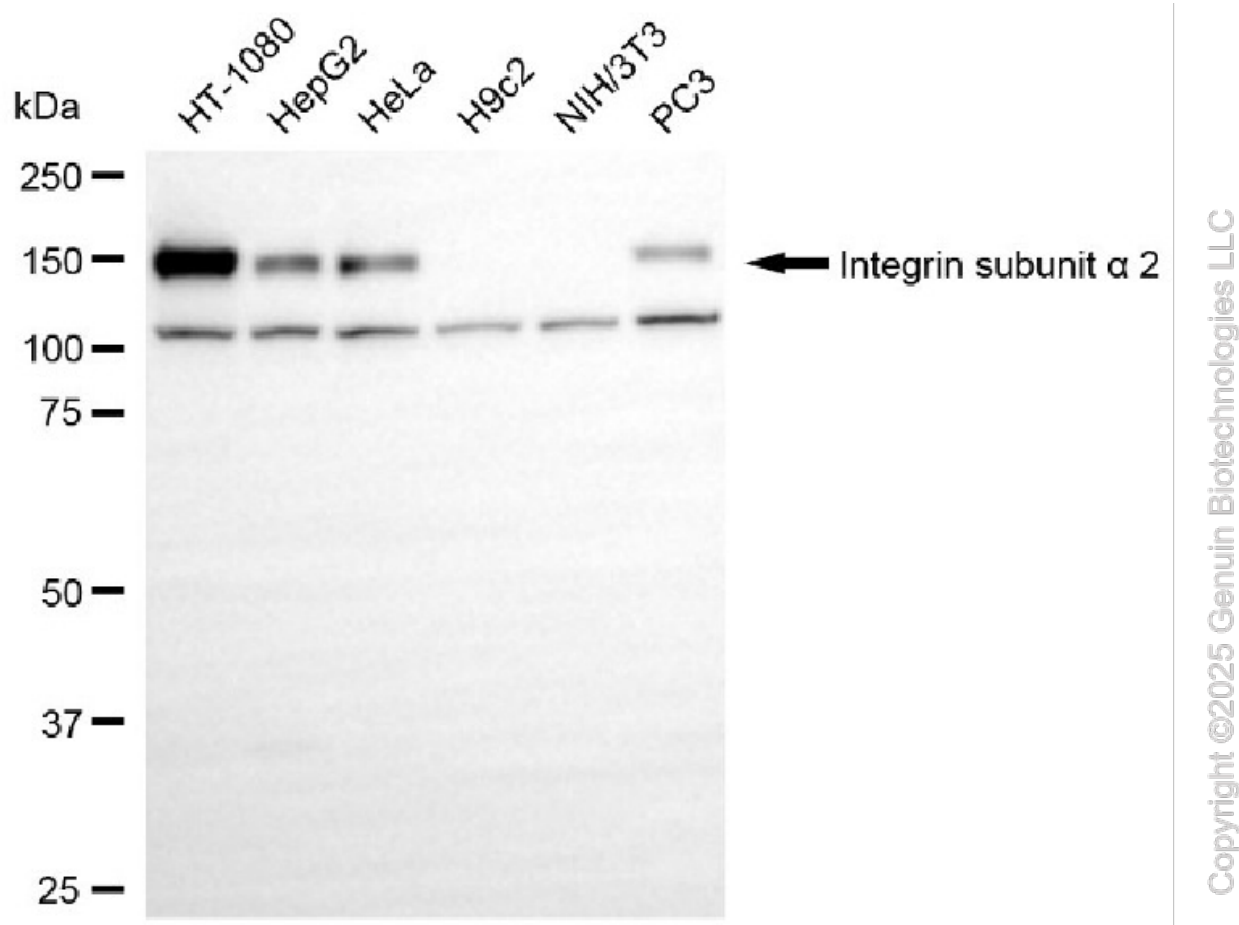
ORDERS

SALES@GENUINBIOTECH.COM
FAX: +1-540-855-7041

WWW.GENUINBIOTECH.COM

KO-Validated Anti-Integrin Subunit Alpha 2 Recombinant Rabbit Monoclonal Antibody

PAGE 3



Western blotting analysis using anti-Integrin subunit alpha 2 antibody (Cat#71145). Total cell lysates (30 µg) from various cell lines were loaded and separated by SDS-PAGE. The blot was incubated with anti-Integrin subunit alpha 2 antibody (Cat#71145, 1:5,000) and HRP-conjugated goat anti-rabbit secondary antibody (Cat#201, 1:20,000) respectively. Image was developed using NaQ™ ECL Substrate Kit (Cat#716).

SUPPORT

SUPPORT@GENUINBIOTECH.COM
TEL: +1-540-855-7041

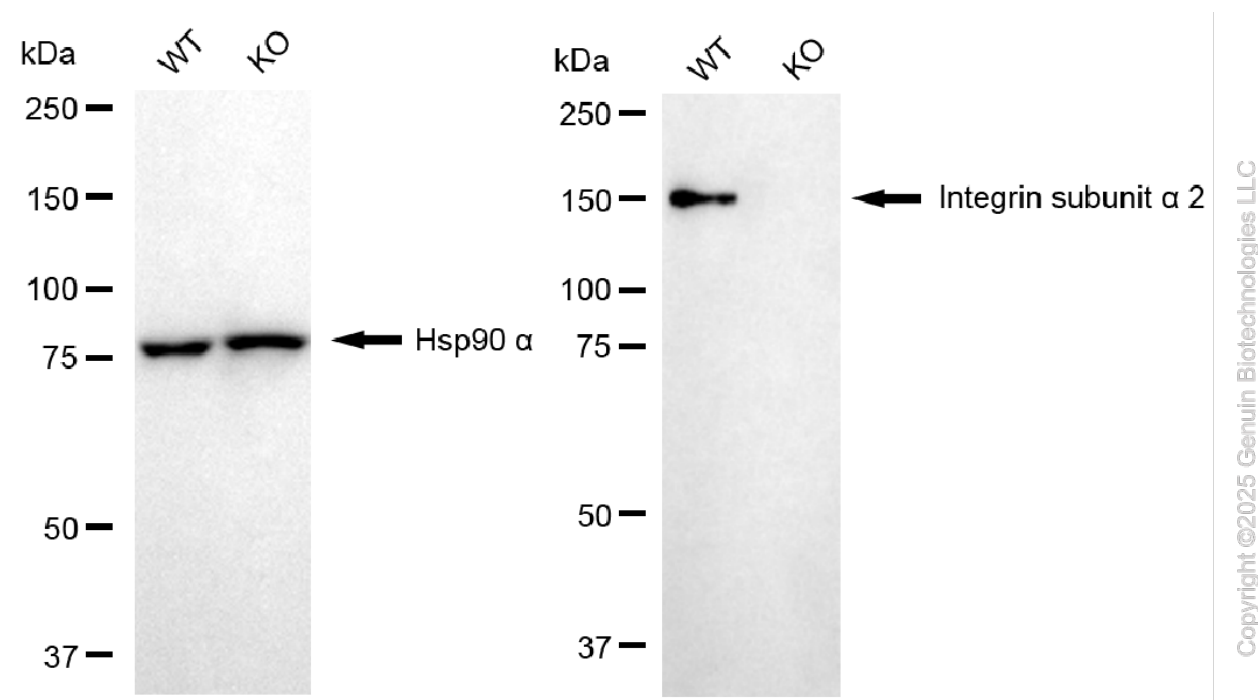
ORDERS

SALES@GENUINBIOTECH.COM
FAX: +1-540-855-7041

WWW.GENUINBIOTECH.COM

KO-Validated Anti-Integrin Subunit Alpha 2 Recombinant Rabbit Monoclonal Antibody

PAGE 4



Western blotting analysis using anti-integrin subunit alpha 2 antibody (Cat#71145). Integrin subunit alpha 2 expression in wild type (WT) and integrin subunit alpha 2 (ITGA2) knockout (KO) HSHC cells with 20 µg of total cell lysates. Hsp90 α serves as a loading control. The blot was incubated with anti-integrin subunit alpha 2 antibody (Cat#71145, 1:5,000) and HRP-conjugated goat anti-rabbit secondary antibody (Cat#201, 1:20,000) respectively. Image was developed using NaQ™ ECL Substrate Kit (Cat#716).

SUPPORT

SUPPORT@GENUINBIOTECH.COM
TEL: +1-540-855-7041

ORDERS

SALES@GENUINBIOTECH.COM
FAX: +1-540-855-7041

WWW.GENUINBIOTECH.COM