

KO-Validated Anti-BCL2 Like 11 Recombinant Rabbit Monoclonal Antibody



Catalog #: 71146

Aliases

BCL2L11; BCL2 Like 11; BIM; BOD; BCL2-Like 11 (Apoptosis Facilitator); Bcl-2-Like Protein 11; BimEL; BimL; BimS; Bcl-2 Interacting Mediator Of Cell Death; Bcl2-Interacting Mediator Of Cell Death; Bcl-2-Related Ovarian Death Agonist; Bcl-2 Interacting Protein Bim; Bcl2-L-11; BAM

Background

Gene Name: BCL2L11

NCBI Gene Entry: [10018](#)

UniProt Entry: [O43521](#)

Application Information

Molecular Weight: Predicted, 22 kDa, observed, 22 kDa

Clonality: Rabbit monoclonal antibody

Clone ID: 25GB610

Species Reactivity: Human, mouse, rat

Applications Tested: Western blotting (WB), flow cytometry (FCM)

Immunogen

A synthesized peptide derived from human Bim

Isotype

Rabbit IgG

Storage Buffer

Supplied in PBS (pH 7.4) containing 50% glycerol, and 0.02% sodium azide.

Storage

Store at -20 °C for one year.

Recommended Dilutions

Western Blotting (WB): 1:1,000-1:5,000

Flow Cytometry (FCM): 1:2,000

Note: This product is for research use only.

SUPPORT

SUPPORT@GENUINBIOTECH.COM
TEL: +1-540-855-7041

ORDERS

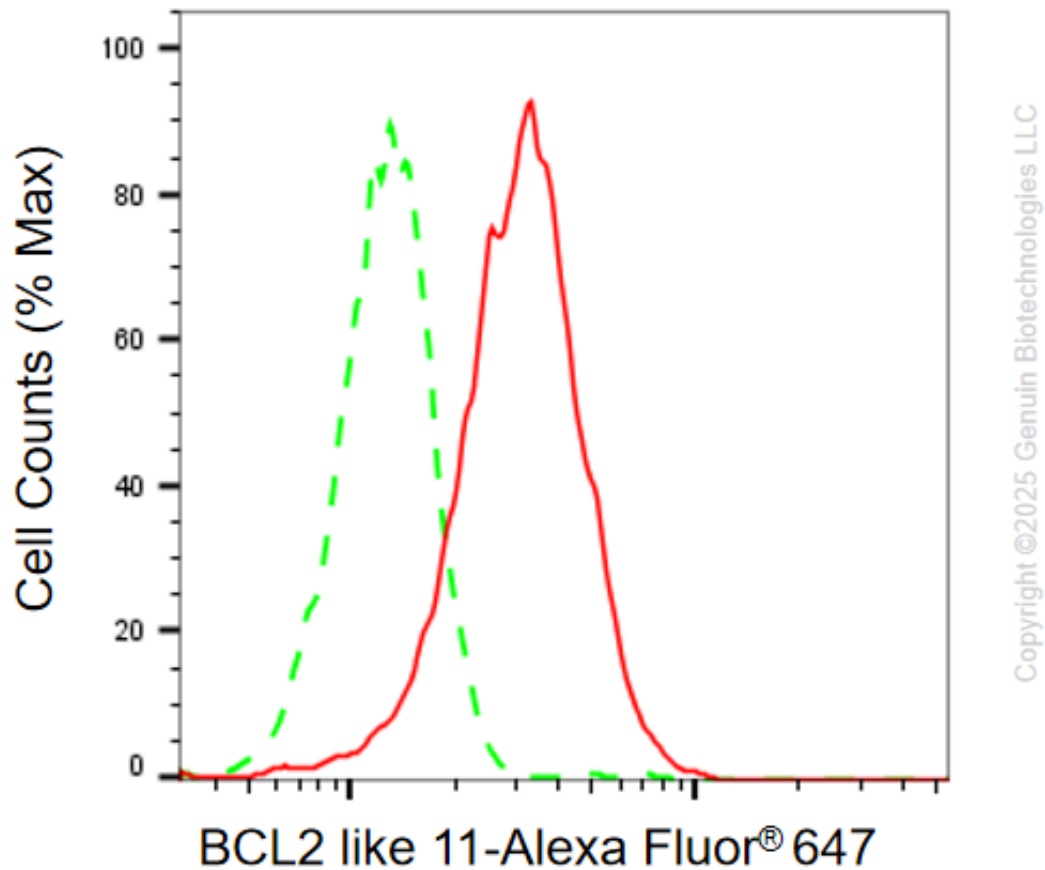
SALES@GENUINBIOTECH.COM
FAX: +1-540-855-7041

WWW.GENUINBIOTECH.COM

KO-Validated Anti-BCL2 Like 11 Recombinant Rabbit Monoclonal Antibody

PAGE 2

Validation Data



Flow cytometric analysis of BCL2 like 11 expression in HepG2 cells using anti-BCL2 like 11 antibody (Cat# 71146, 1:2,000). Green, isotype control; red, BCL2 like 11.

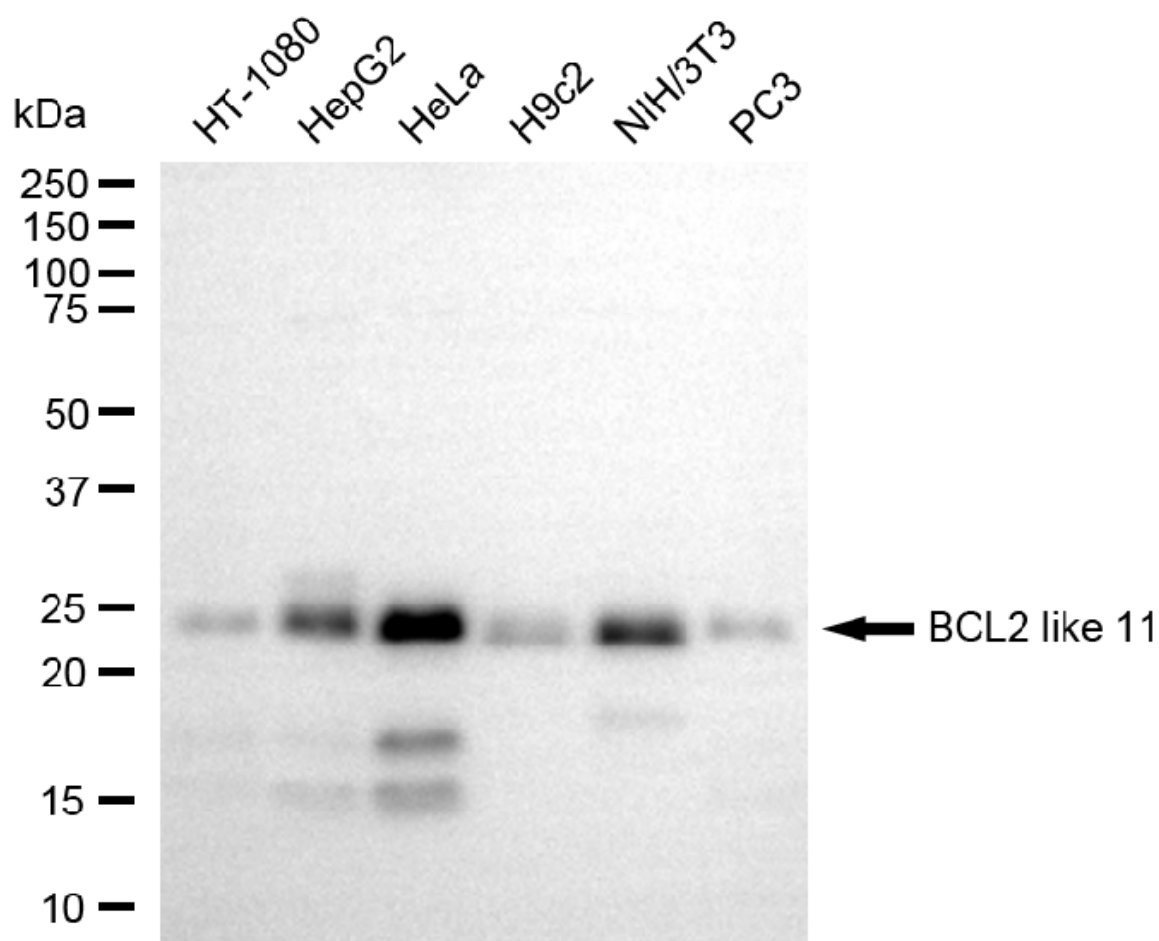
SUPPORT

SUPPORT@GENUINBIOTECH.COM
TEL: +1-540-855-7041

ORDERS

SALES@GENUINBIOTECH.COM
FAX: +1-540-855-7041

WWW.GENUINBIOTECH.COM

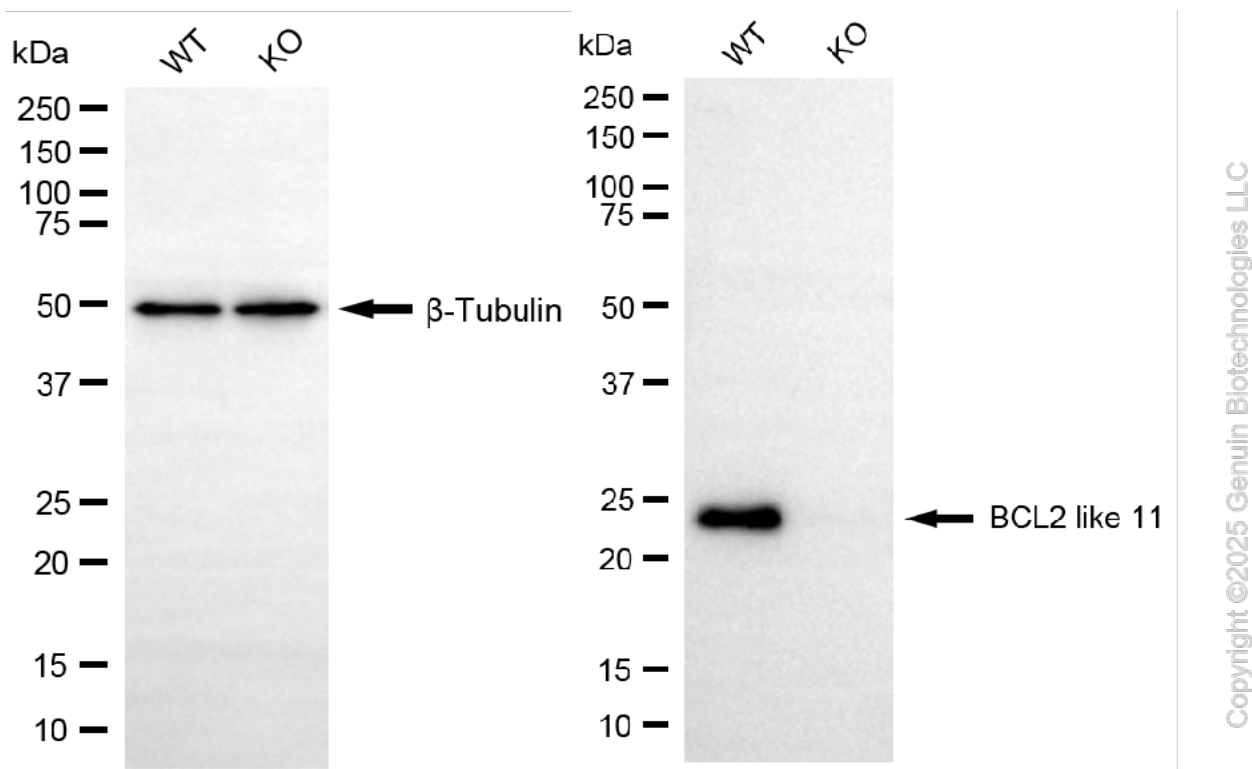


Copyright ©2025 Genuin Biotechnologies LLC

Western blotting analysis using anti-BCL2 like 11 antibody (Cat#71146). Total cell lysates (30 µg) from various cell lines were loaded and separated by SDS-PAGE. The blot was incubated with anti-BCL2 like 11 antibody (Cat#71146, 1:5,000) and HRP-conjugated goat anti-rabbit secondary antibody (Cat#201, 1:20,000) respectively. Image was developed using FeQ™ ECL Substrate Kit (Cat#226).

KO-Validated Anti-BCL2 Like 11 Recombinant Rabbit Monoclonal Antibody

PAGE 4



Western blotting analysis using anti-BCL2 like 11 antibody (Cat#71146). BCL2 like 11 expression in wild type (WT) and BCL2 like 11 (BCL2L11) knockout (KO) HSHC cells with 20 μ g of total cell lysates. β -Tubulin serves as a loading control. The blot was incubated with anti-BCL2 like 11 antibody (Cat#71146, 1:5,000) and HRP-conjugated goat anti-rabbit secondary antibody (Cat#201, 1:20,000) respectively. Image was developed using FeQ™ ECL Substrate Kit (Cat#226).

SUPPORT

SUPPORT@GENUINBIOTECH.COM
TEL: +1-540-855-7041

ORDERS

SALES@GENUINBIOTECH.COM
FAX: +1-540-855-7041

WWW.GENUINBIOTECH.COM