

KO-Validated Anti-NK2 homeobox 1 Recombinant Rabbit Monoclonal Antibody



Catalog #: 71148

Aliases

NKX2-1; NK2 Homeobox 1; TTF-1; TTF1; Thyroid Transcription Factor 1; NKX2A; TITF1; Thyroid-Specific Enhancer-Binding Protein; Homeobox Protein NK-2 Homolog A; Homeobox Protein Nkx-2.1; Thyroid Nuclear Factor 1; T/EBP; BCH; NK-2 Homolog A; Benign Chorea; NKX2.1; NMTC1; NK-2; TEBP; BHC

Background

Gene Name: NKX2-1

NCBI Gene Entry: [7080](#)

UniProt Entry: [P43699](#)

Application Information

Molecular Weight: Predicted, 39 kDa; observed, 39,42 kDa

Clonality: Rabbit monoclonal antibody

Clone ID: 25GB645

Species Reactivity: Human

Applications Tested: Western blotting (WB)

Immunogen

A synthesized peptide derived from human TTF1

Isotype

Rabbit IgG

Storage Buffer

Supplied in PBS (pH 7.4) containing 50% glycerol, and 0.02% sodium azide.

Storage

Store at -20 °C for one year.

Recommended Dilutions

Western blotting (WB): 1:1,000-1:5,000

Note: This product is for research use only.

Validation Data

SUPPORT

SUPPORT@GENUINBIOTECH.COM
TEL: +1-540-855-7041

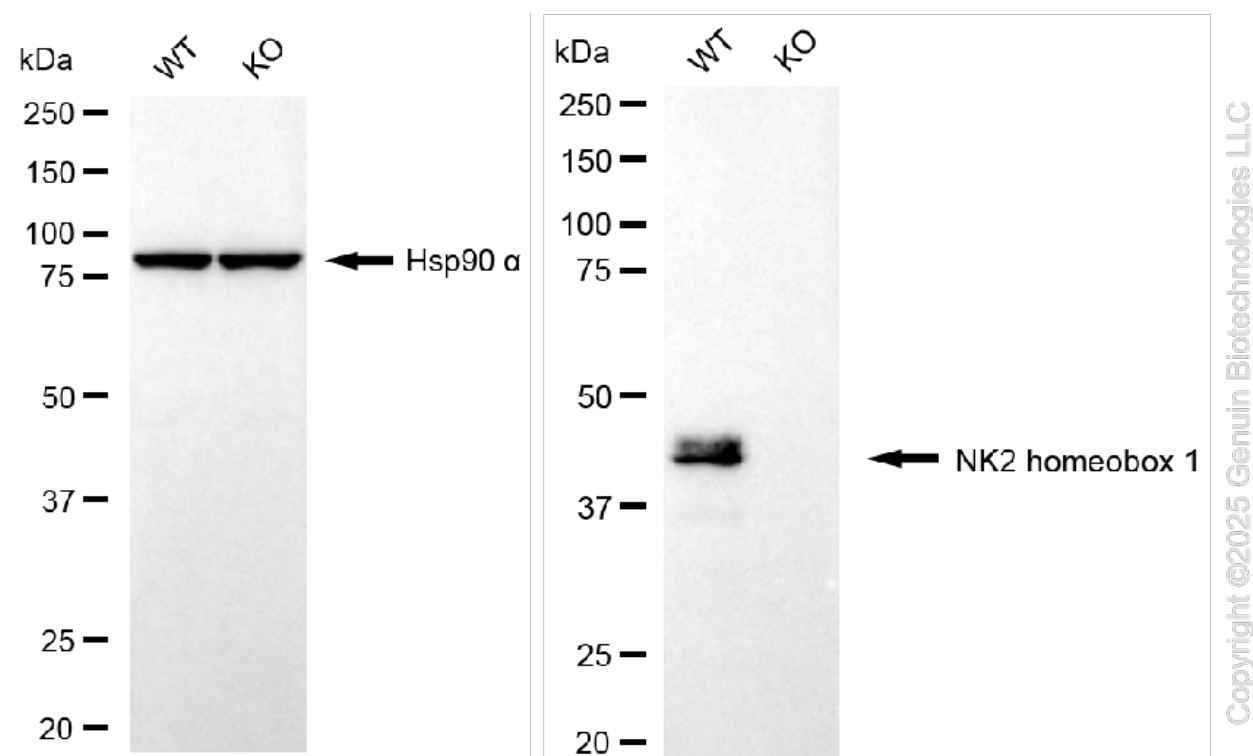
ORDERS

SALES@GENUINBIOTECH.COM
FAX: +1-540-855-7041

WWW.GENUINBIOTECH.COM

KO-Validated Anti-NK2 homeobox 1 Recombinant Rabbit Monoclonal Antibody

PAGE 2



Western blotting analysis using anti-NK2 homeobox 1 antibody (Cat#71148). NK2 homeobox 1 expression in wild type (WT) and NK2 homeobox 1 (NKX2-1) knockout (KO) HSHC cells with 20 μ g of total cell lysates. Hsp90 α serves as a loading control. The blot was incubated with anti-NK2 homeobox 1 antibody (Cat#71148, 1:5,000) and HRP-conjugated goat anti-rabbit secondary antibody (Cat#201, 1:20,000) respectively. Image was developed using NaQTM ECL Substrate Kit (Cat#716).

SUPPORT

SUPPORT@GENUINBIOTECH.COM
TEL: +1-540-855-7041

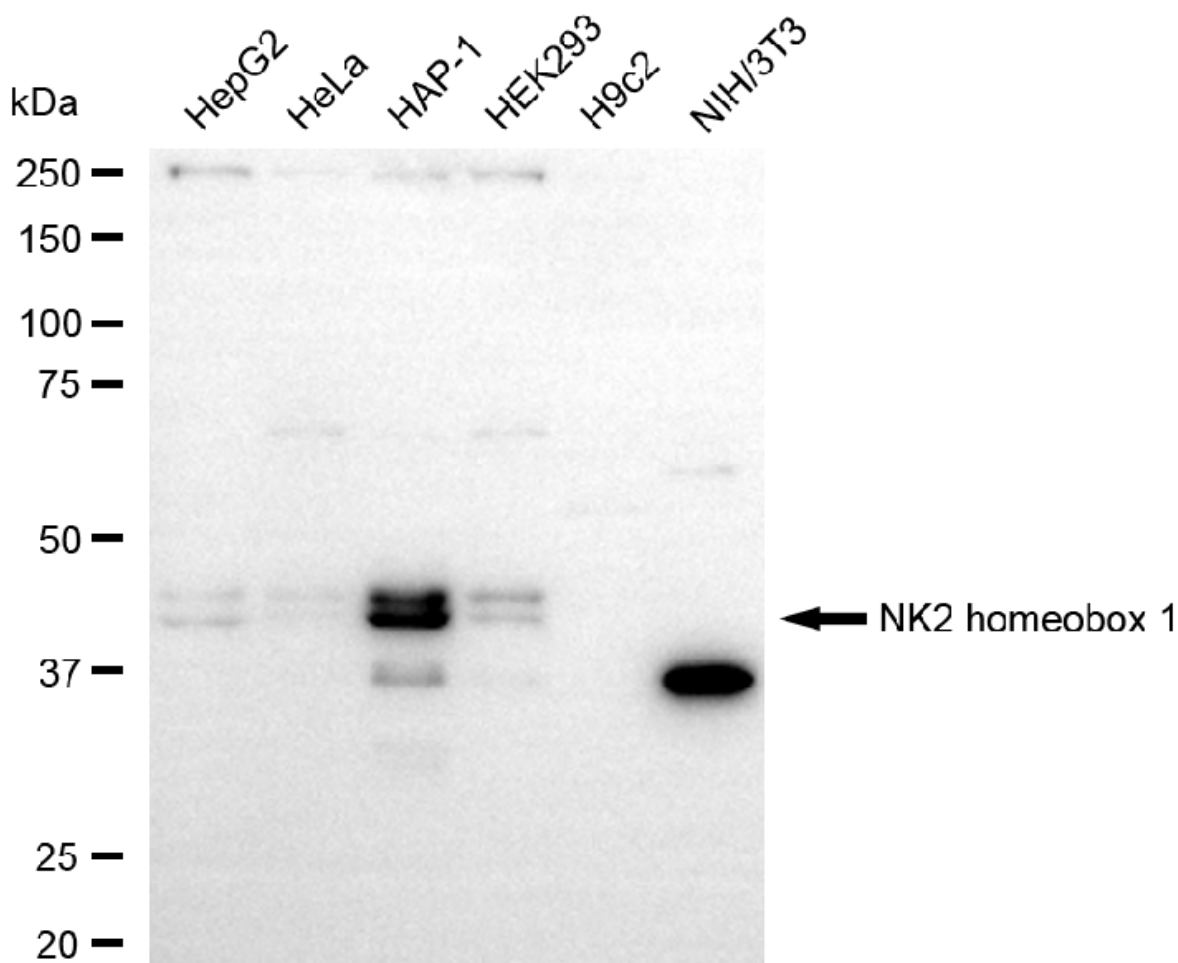
ORDERS

SALES@GENUINBIOTECH.COM
FAX: +1-540-855-7041

WWW.GENUINBIOTECH.COM

KO-Validated Anti-NK2 homeobox 1 Recombinant Rabbit Monoclonal Antibody

PAGE 3



Copyright ©2025 Genuin Biotechnologies LLC

Western blotting analysis using anti-NK2 homeobox 1 antibody (Cat#71148). Total cell lysates (30 µg) from various cell lines were loaded and separated by SDS-PAGE. The blot was incubated with anti-NK2 homeobox 1 antibody (Cat#71148, 1:5,000) and HRP-conjugated goat anti-rabbit secondary antibody (Cat#201, 1:20,000) respectively. Image was developed using FeQ™ ECL Substrate Kit (Cat#226).

SUPPORT

SUPPORT@GENUINBIOTECH.COM
TEL: +1-540-855-7041

ORDERS

SALES@GENUINBIOTECH.COM
FAX: +1-540-855-7041

WWW.GENUINBIOTECH.COM