

KO-Validated Anti-Caveolin 1 Recombinant Rabbit Monoclonal Antibody



Catalog #: 71163

Aliases

CAV1; Caveolin 1; Caveolin 1, Caveolae Protein, 22kDa; Caveolin-1; CAV; Caveolin 1, Caveolae Protein, 22kD; Cell Growth-Inhibiting Protein 32; MSTP085; BSCL3; LCCNS; VIP21; CGL3; PPH3

Background

Gene Name: CAV1

NCBI Gene Entry: [857](#)

UniProt Entry: [Q03135](#)

Application Information

Molecular Weight: Predicted, 20 kDa, observed, 20 kDa

Clonality: Rabbit monoclonal antibody

Clone ID: 25GB455

Species Reactivity: Human, mouse

Applications Tested: Western blotting (WB)

Immunogen

A synthesized peptide derived from human Caveolin-1

Isotype

Rabbit IgG

Storage Buffer

Supplied in PBS (pH 7.4) containing 50% glycerol, and 0.02% sodium azide.

Storage

Store at -20 °C for one year.

Recommended Dilutions

Western Blotting (WB): 1:1,000-1:5,000

Note: This product is for research use only.

Validation Data

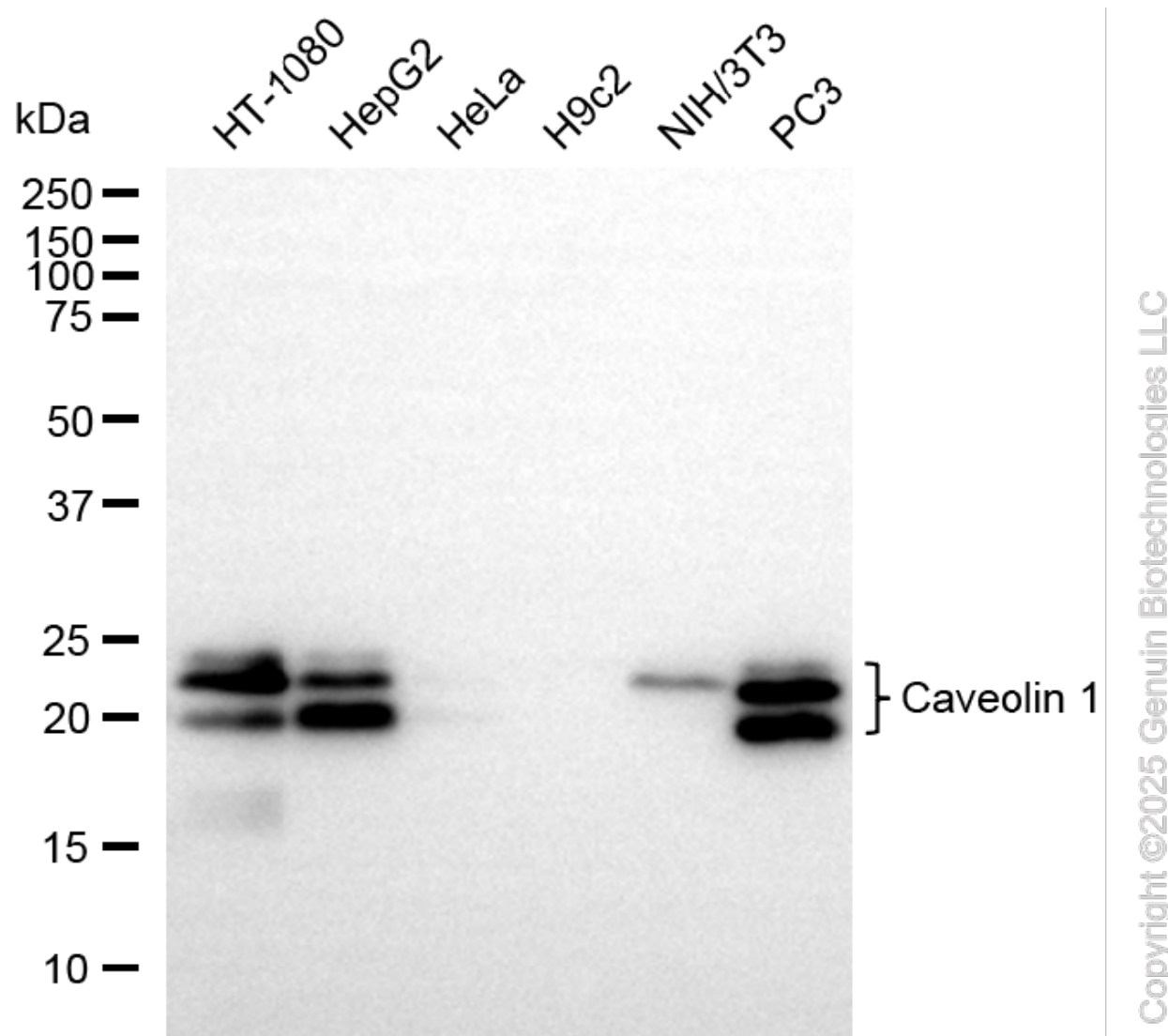
SUPPORT

SUPPORT@GENUINBIOTECH.COM
TEL: +1-540-855-7041

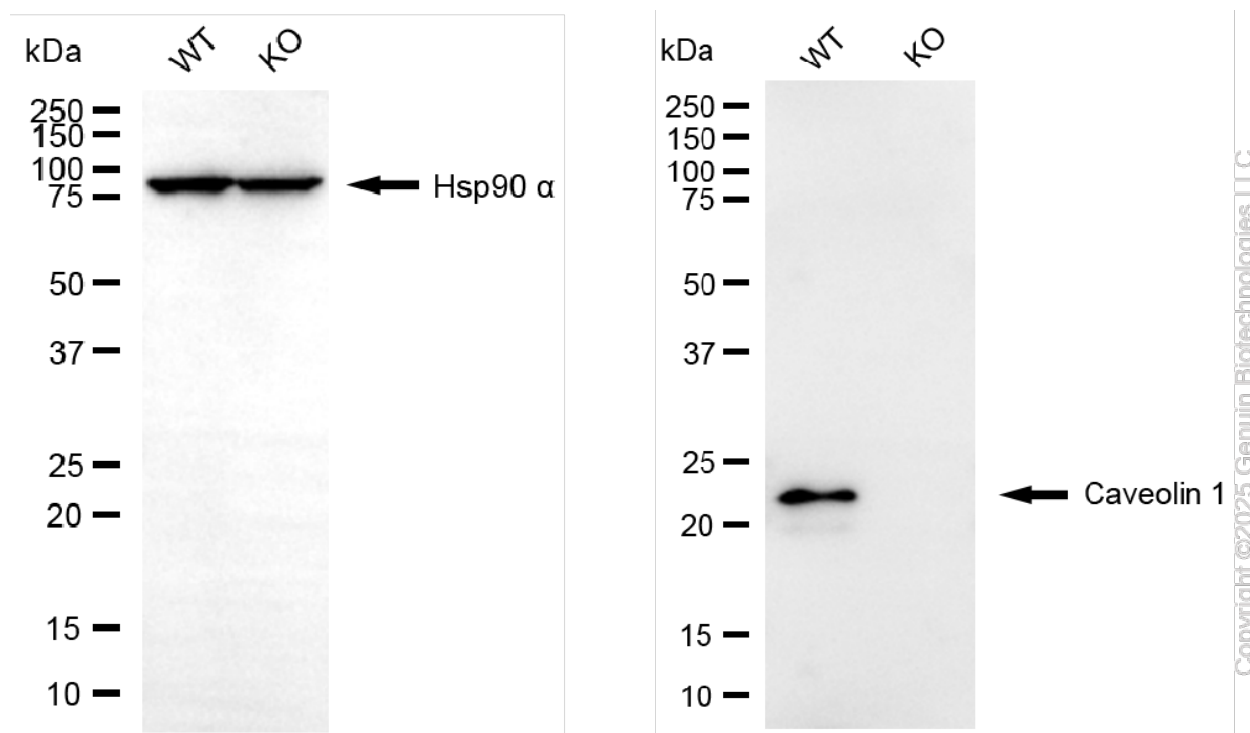
ORDERS

SALES@GENUINBIOTECH.COM
FAX: +1-540-855-7041

WWW.GENUINBIOTECH.COM



Western blotting analysis using anti-Caveolin 1 antibody (Cat#71163). Total cell lysates (5 µg) from various cell lines were loaded and separated by SDS-PAGE. The blot was incubated with anti-Caveolin 1 antibody (Cat#71163, 1:5,000) and HRP-conjugated goat anti-rabbit secondary antibody (Cat#201, 1:20,000) respectively. Image was developed using NaQ™ ECL Substrate Kit (Cat#716).



Western blotting analysis using anti-caveolin 1 antibody (Cat#71163). Caveolin 1 expression in wild-type (WT) and caveolin 1 (CAV1) knockout (KO) 293T cells with 30 µg of total cell lysates. Hsp90 α serves as a loading control. The blot was incubated with anti-caveolin 1 antibody (Cat#71163, 1:5,000) and HRP-conjugated goat anti-rabbit secondary antibody (Cat#201, 1:20,000) respectively. Image was developed using FeQ™ ECL Substrate Kit (Cat#226).