

KO-Validated Anti-SRPK2 Mouse Monoclonal Antibody



Catalog #: 71165

Aliases

SRPK2; SRSF Protein Kinase 2; SFRS Protein Kinase 2; SFRSK2; Serine/Arginine-Rich Protein-Specific Kinase 2; Serine/Arginine-Rich Splicing Factor Kinase 2; SR-Protein-Specific Kinase 2; SR Protein Kinase 2; EC 2.7.11.1; Serine/Threonine-Protein Kinase SRPK2; Serine Kinase SRPK2

Background

Gene Name: SRPK2

NCBI Gene Entry: [6733](#)

UniProt Entry: [P78362](#)

Application Information

Molecular Weight: Predicted, 78 kDa; observed, 125 kDa

Clonality: Mouse monoclonal antibody

Clone ID: 25GB660

Species Reactivity: Human, rat

Applications Tested: Western blotting (WB), flow cytometry (FCM), immunocytochemistry (IC)

Immunogen

Recombinant protein of human SRPK2

Isotype

Mouse IgG2a

Storage Buffer

Supplied in PBS (pH 7.4) containing 50% glycerol, and 0.02% sodium azide.

Storage

Store at -20 °C for one year.

Recommended Dilutions

Western Blotting (WB): 1:200-1:1,000

Flow Cytometry (FCM): 1:2,000

Immunocytochemistry (IC): 1:100-1:1,000

SUPPORT

SUPPORT@GENUINBIOTECH.COM
TEL: +1-540-855-7041

ORDERS

SALES@GENUINBIOTECH.COM
FAX: +1-540-855-7041

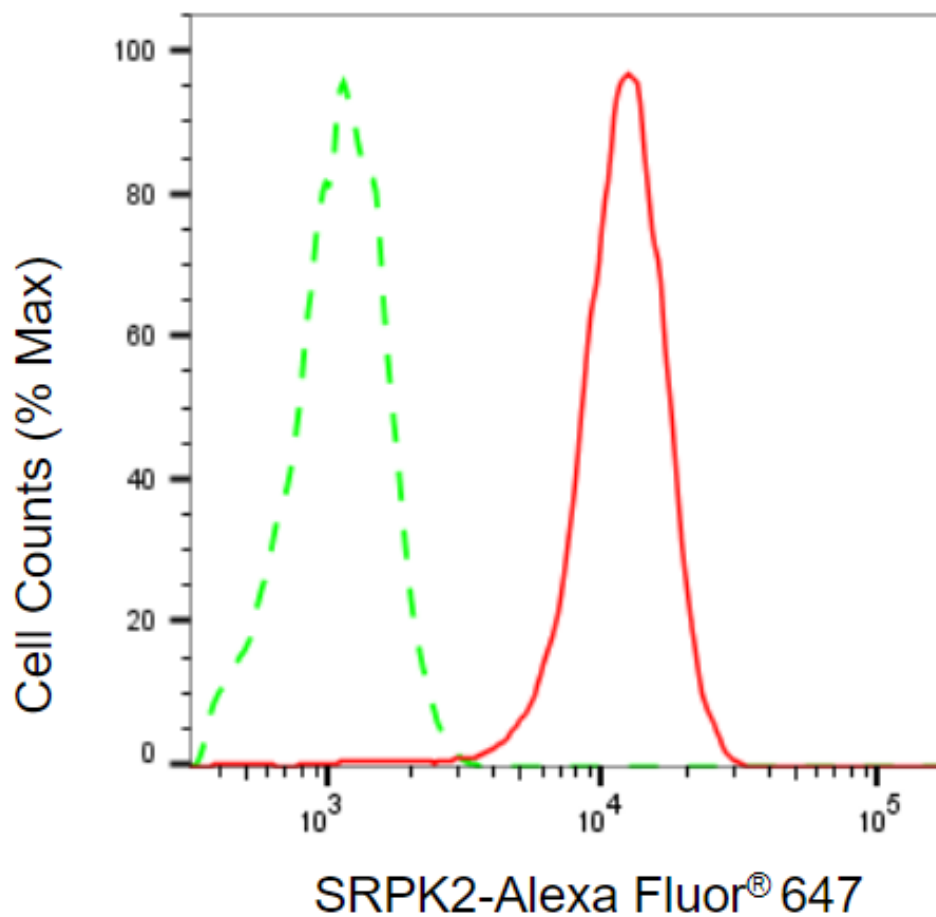
WWW.GENUINBIOTECH.COM

KO-Validated Anti-SRPK2 Mouse Monoclonal Antibody

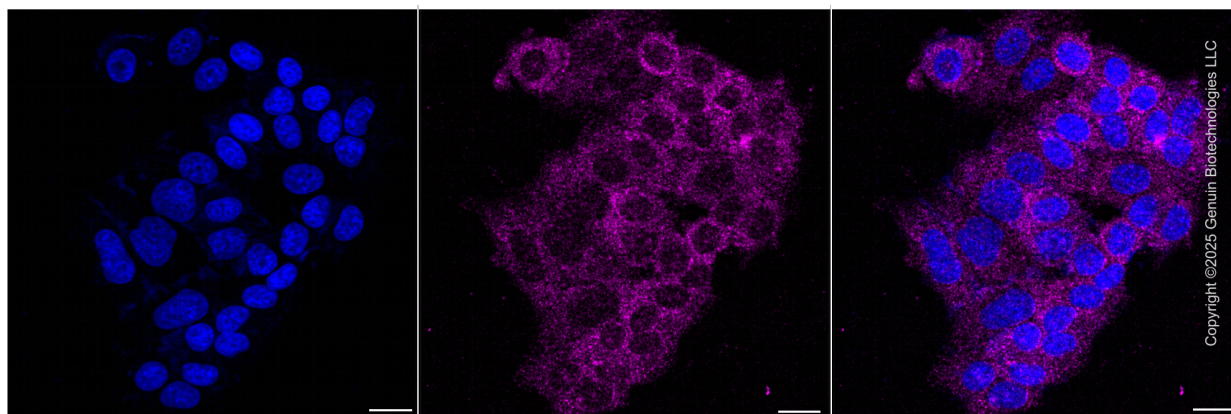
PAGE 2

Note: This product is for research use only.

Validation Data



Flow cytometric analysis of SRPK2 expression in HepG2 cells using anti-SRPK2 antibody (Cat#71165, 1:2,000). Green, isotype control; red, SRPK2.



SUPPORT

SUPPORT@GENUINBIOTECH.COM
TEL: +1-540-855-7041

ORDERS

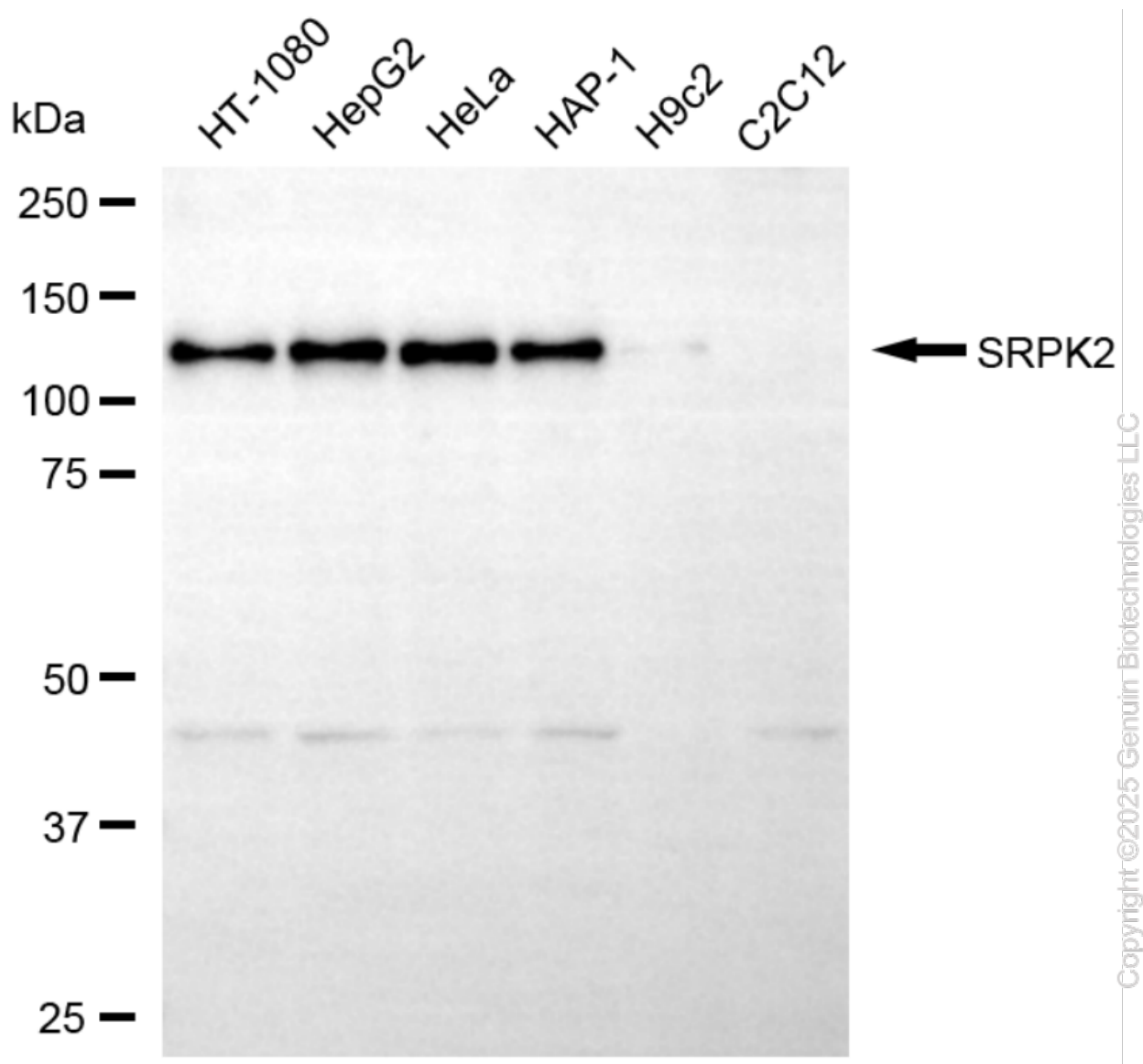
SALES@GENUINBIOTECH.COM
FAX: +1-540-855-7041

WWW.GENUINBIOTECH.COM

KO-Validated Anti-SRPK2 Mouse Monoclonal Antibody

PAGE 3

Immunocytochemical staining of HepG2 cells with anti-SRPK2 antibody (Cat#71165, 1:1,000). Nuclei were stained blue with DAPI; SRPK2 was stained magenta with Alexa Fluor® 647. Images were taken using Leica stellaris 5. Protein abundance based on laser Intensity and smart gain:Low. Scale bar, 20 µm.



Western blotting analysis using anti-SRPK2 antibody (Cat#71165). Total cell lysates (30 µg) from various cell lines were loaded and separated by SDS-PAGE. The blot was incubated with anti-SRPK2 antibody (Cat#71165, 1:1,000) and HRP-conjugated goat anti-mouse secondary antibody (Cat#101, 1:20,000) respectively. Image was developed using NaQ™ ECL Substrate Kit (Cat#716).

SUPPORT

SUPPORT@GENUINBIOTECH.COM
TEL: +1-540-855-7041

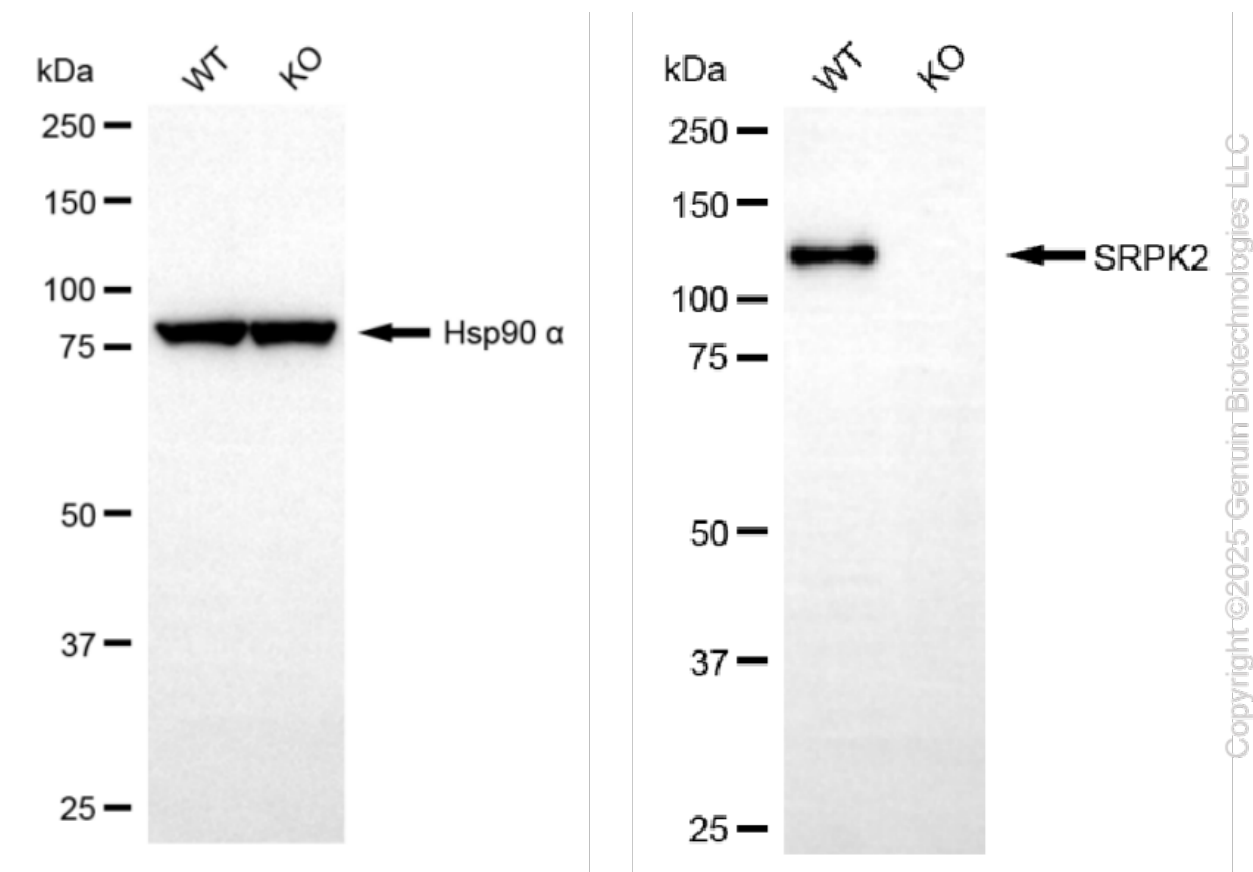
ORDERS

SALES@GENUINBIOTECH.COM
FAX: +1-540-855-7041

WWW.GENUINBIOTECH.COM

KO-Validated Anti-SRPK2 Mouse Monoclonal Antibody

PAGE 4



Western blotting analysis using anti-SRPK2 antibody (Cat#71165). SRPK2 expression in wild type (WT) and SRPK2 knockout (KO) HeLa cells with 30 μ g of total cell lysates. Hsp90 α serves as a loading control. The blot was incubated with anti-SRPK2 antibody (Cat#71165, 1:1,000) and HRP-conjugated goat anti-mouse secondary antibody (Cat#101, 1:20,000) respectively. Image was developed using NaQTM ECL Substrate Kit (Cat#716).

SUPPORT

SUPPORT@GENUINBIOTECH.COM
TEL: +1-540-855-7041

ORDERS

SALES@GENUINBIOTECH.COM
FAX: +1-540-855-7041

WWW.GENUINBIOTECH.COM