

# KO-Validated Anti-GAPDH Recombinant Rabbit Monoclonal Antibody



**Catalog #: 71169**

## Aliases

GAPDH; Glyceraldehyde-3-Phosphate Dehydrogenase; Peptidyl-Cysteine S-Nitrosylase GAPDH; EC 1.2.1.12; GAPD; Epididymis Secretory Sperm Binding Protein Li 162eP; Oct1 Coactivator In S Phase, 38 Kd Component; Aging-Associated Gene 9 Protein; OCAS, P38 Component ; HEL-S-162eP; EC 2.6.99.-; EC 1.2.1; G3PD

## Background

Gene Name: GAPDH

NCBI Gene Entry: [2597](#)

UniProt Entry: [P04406](#)

## Application Information

Molecular Weight: Predicted, 36 kDa; observed, 36 kDa

Clonality: Rabbit monoclonal antibody

Clone ID: 25GB620

Species Reactivity: Human, mouse, rat

Applications Tested: Western blotting (WB)

## Immunogen

A synthesized peptide derived from human GAPDH

## Isotype

Rabbit IgG

## Storage Buffer

Supplied in PBS (pH 7.4) containing 50% glycerol, and 0.02% sodium azide.

## Storage

Store at -20 °C for one year.

## Recommended Dilutions

Western blotting (WB): 1:2,000-1:10,000

**Note:** This product is for research use only.

## Validation Data

---

### SUPPORT

SUPPORT@GENUINBIOTECH.COM  
TEL: +1-540-855-7041

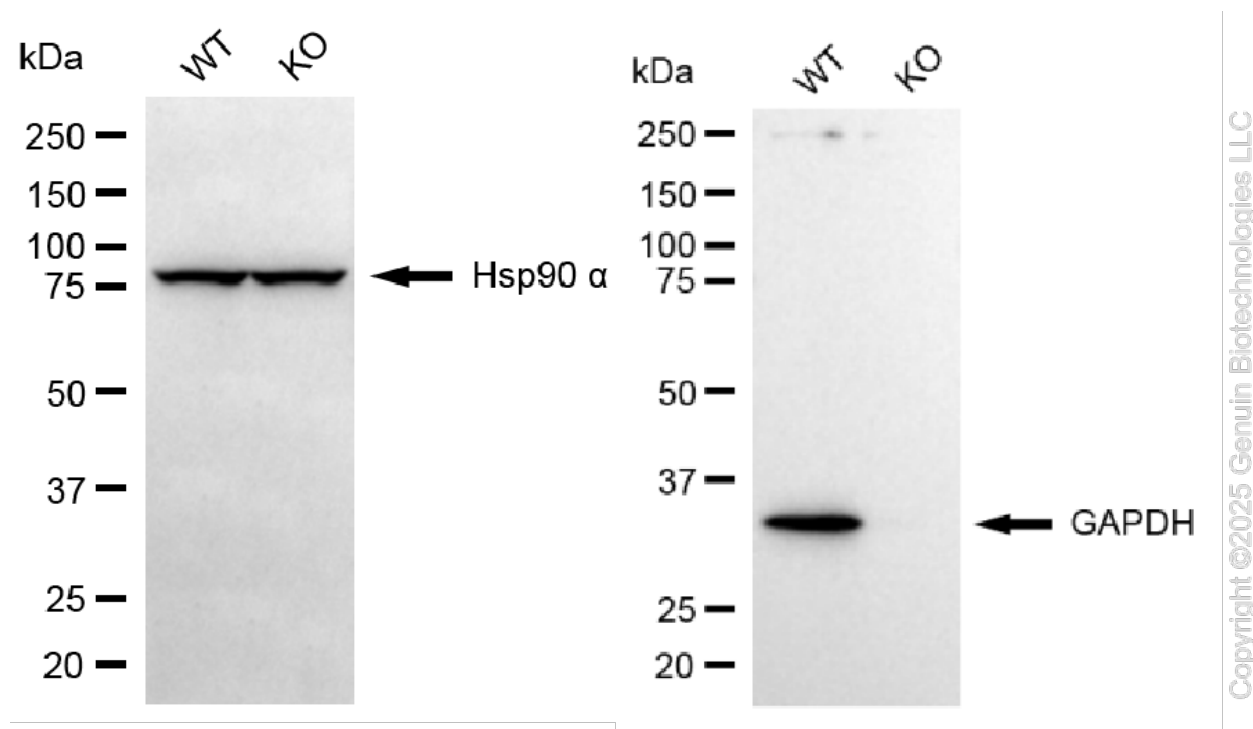
### ORDERS

SALES@GENUINBIOTECH.COM  
FAX: +1-540-855-7041

[WWW.GENUINBIOTECH.COM](http://WWW.GENUINBIOTECH.COM)

## KO-Validated Anti-GAPDH Recombinant Rabbit Monoclonal Antibody

PAGE 2



Western blotting analysis using anti-GAPDH antibody (Cat#71169). GAPDH expression in wild type (WT) and GAPDH knockout (KO) HSHC cells with 20 µg of total cell lysates. Hsp90 α serves as a loading control. The blot was incubated with anti-GAPDH antibody (Cat#71169, 1:100,000) and HRP-conjugated goat anti-rabbit secondary antibody (Cat#201, 1:20,000) respectively. Image was developed using NaQ™ ECL Substrate Kit (Cat#716).

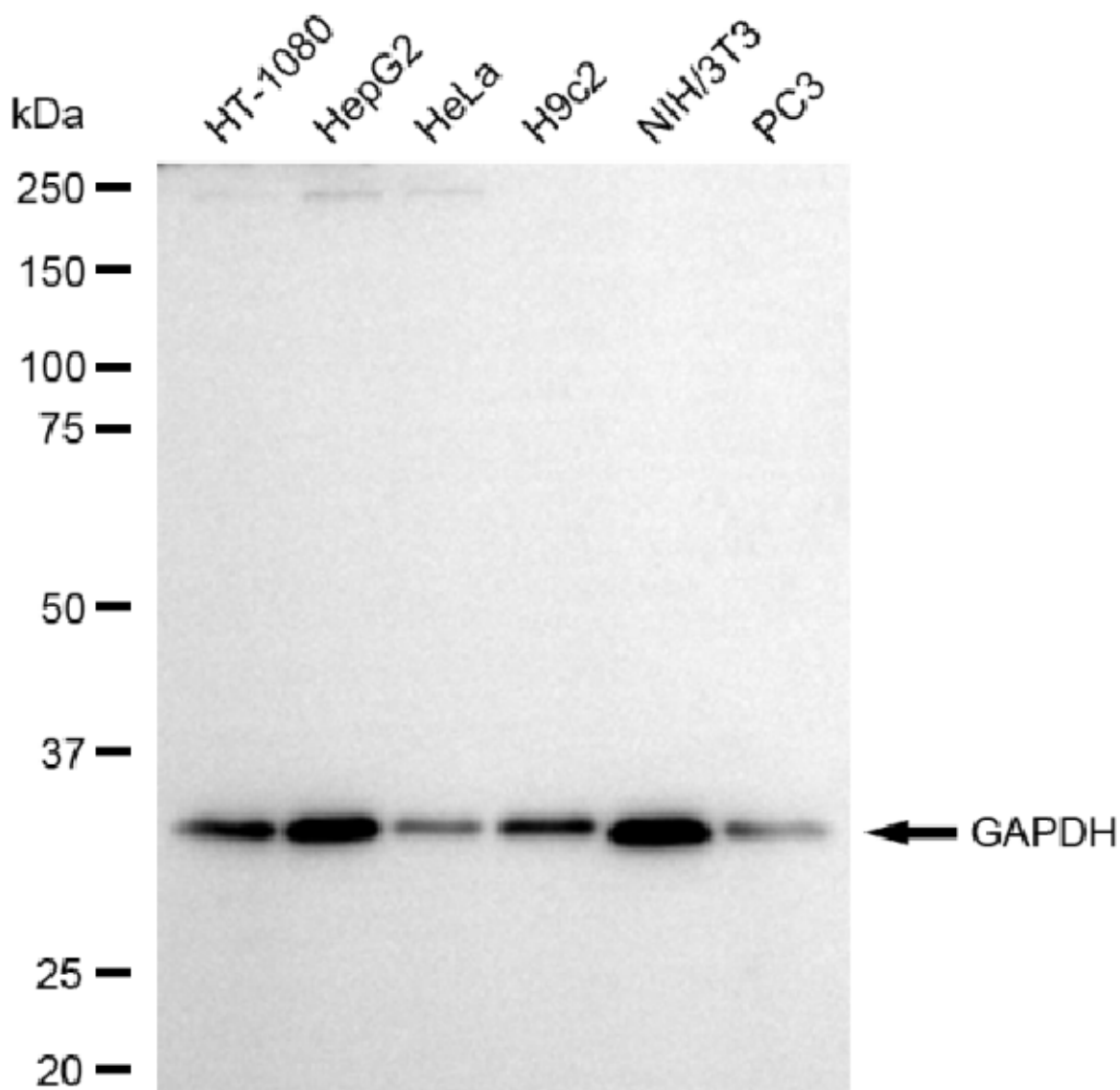
### SUPPORT

SUPPORT@GENUINBIOTECH.COM  
TEL: +1-540-855-7041

### ORDERS

SALES@GENUINBIOTECH.COM  
FAX: +1-540-855-7041

[WWW.GENUINBIOTECH.COM](http://WWW.GENUINBIOTECH.COM)



Copyright ©2025 Genuin Biotechnologies LLC

Western blotting analysis using anti-GAPDH antibody (Cat#71169). Total cell lysates (30 µg) from various cell lines were loaded and separated by SDS-PAGE. The blot was incubated with anti-GAPDH antibody (Cat#71169, 1:10,000) and HRP-conjugated goat anti-rabbit secondary antibody (Cat#201, 1:20,000) respectively. Image was developed using NaQ™ ECL Substrate Kit (Cat#716).