

# KO-Validated Anti-SMN1 Recombinant Rabbit Monoclonal Antibody



**Catalog #: 71171**

## Aliases

SMN1; Survival Of Motor Neuron 1, Telomeric; SMNT; TDRD16A; Gemin-1; BCD541; GEMIN1; SMA1; SMA2; SMA3; Survival Motor Neuron Protein; Tudor Domain Containing 16A; Component Of Gems 1; SMA@; SMA; SMN; Spinal Muscular Atrophy (Werdnig-Hoffmann Disease, Kugelberg-Welander Disease); Survival Motor Neuron 1 Protein; T-BCD541; SMA4; SMNC

## Background

Gene Name: SMN1

NCBI Gene Entry: [6606](#)

UniProt Entry: [Q16637](#)

## Application Information

Molecular Weight: Predicted, 32 kDa; observed, 36 kDa

Clonality: Rabbit monoclonal antibody

Clone ID: 25GB1840

Species Reactivity: Human

Applications Tested: Western blotting (WB), flow cytometry (FCM), immunocytochemistry (IC)

## Immunogen

A synthesized peptide derived from human SMN1

## Isotype

Rabbit IgG

## Storage Buffer

Supplied in PBS (pH 7.4) containing 50% glycerol, and 0.02% sodium azide.

## Storage

Store at -20 °C for one year.

## Recommended Dilutions

Western Blotting (WB): 1:1,000-1:5,000

Flow Cytometry (FCM): 1:2,000

Immunocytochemistry (IC): 1:100-1:1,000

---

### SUPPORT

SUPPORT@GENUINBIOTECH.COM  
TEL: +1-540-855-7041

### ORDERS

SALES@GENUINBIOTECH.COM  
FAX: +1-540-855-7041

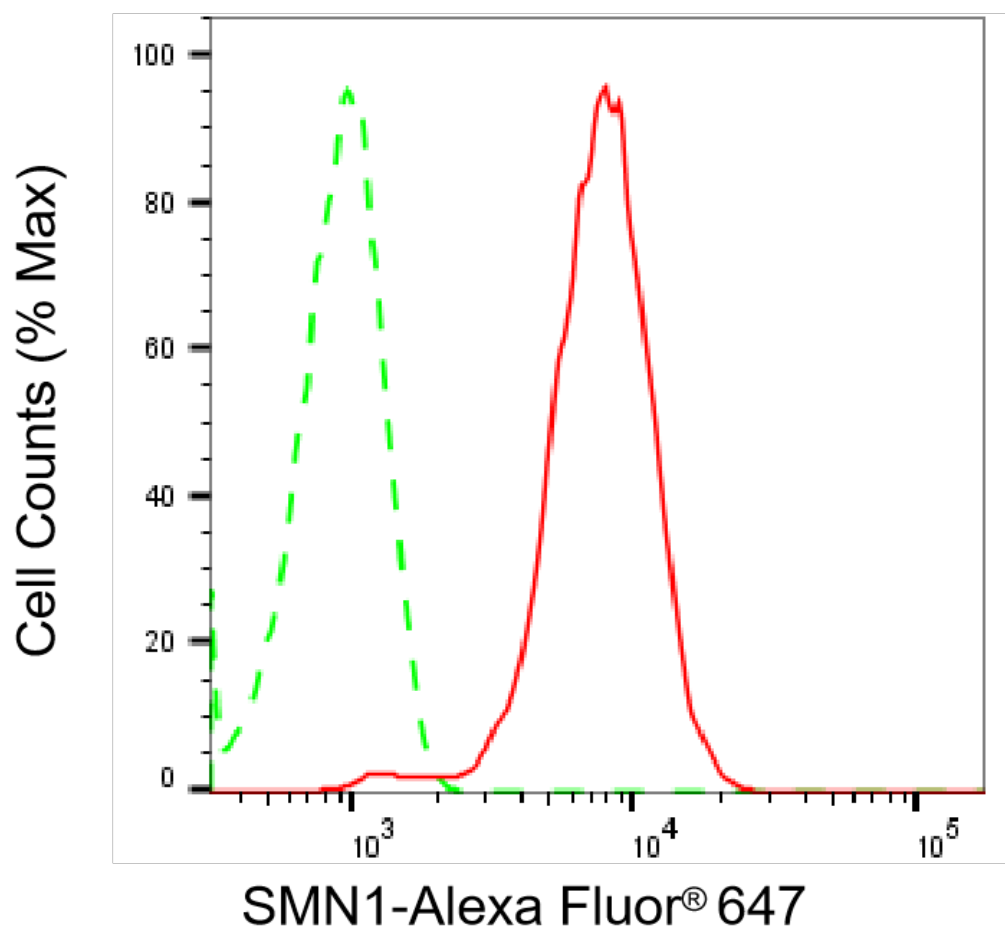
[WWW.GENUINBIOTECH.COM](http://WWW.GENUINBIOTECH.COM)

# KO-Validated Anti-SMN1 Recombinant Rabbit Monoclonal Antibody

PAGE 2

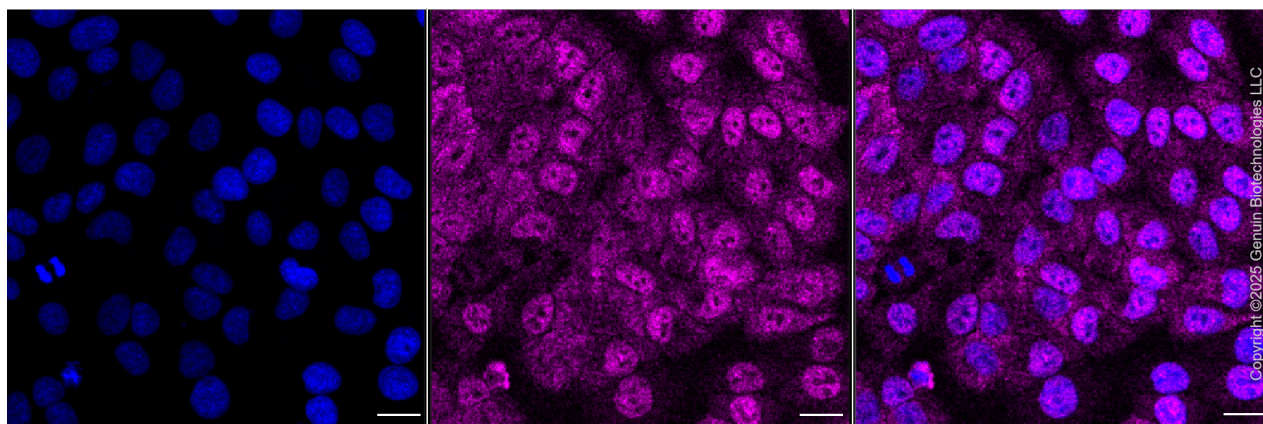
**Note:** This product is for research use only.

## Validation Data



Copyright ©2025 Genuin Biotechnologies LLC

Flow cytometric analysis of SMN1 expression in HepG2 cells using anti-SMN1 antibody (Cat#71171, 1:2,000). Green, isotype control; red, SMN1.



Copyright ©2025 Genuin Biotechnologies LLC

### SUPPORT

SUPPORT@GENUINBIOTECH.COM  
TEL: +1-540-855-7041

### ORDERS

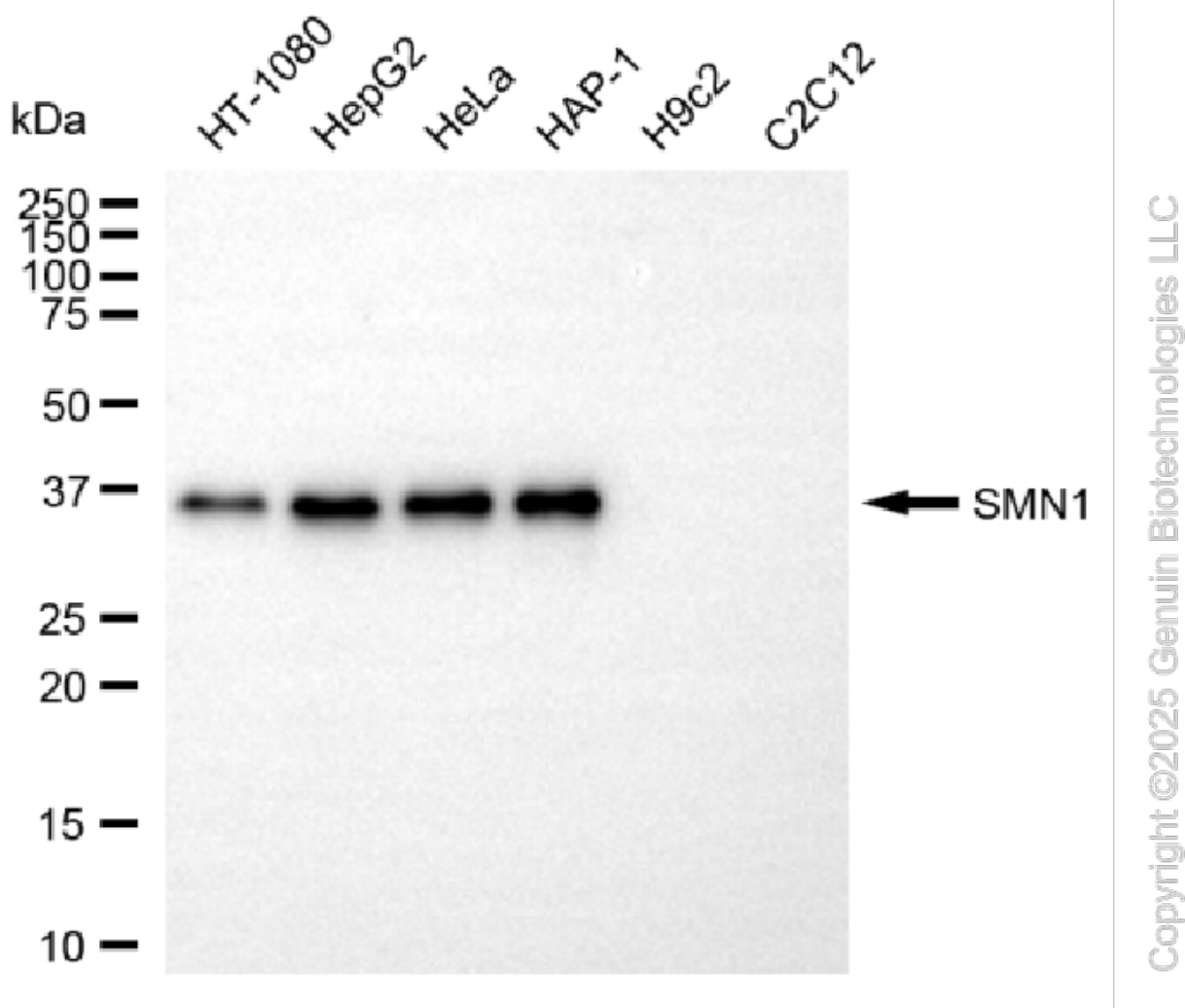
SALES@GENUINBIOTECH.COM  
FAX: +1-540-855-7041

WWW.GENUINBIOTECH.COM

## KO-Validated Anti-SMN1 Recombinant Rabbit Monoclonal Antibody

PAGE 3

Immunocytochemical staining of HepG2 cells with anti-SMN1 antibody (Cat#71171, 1:1,000). Nuclei were stained blue with DAPI; SMN1 was stained magenta with Alexa Fluor® 647. Images were taken using Leica stellaris 5. Protein abundance based on laser Intensity and smart gain: Medium. Scale bar, 20  $\mu$ m.



Western blotting analysis using anti-SMN1 antibody (Cat#71171). Total cell lysates (30  $\mu$ g) from various cell lines were loaded and separated by SDS-PAGE. The blot was incubated with anti-SMN1 antibody (Cat#71171, 1:5,000) and HRP-conjugated goat anti-rabbit secondary antibody (Cat#201, 1:20,000) respectively. Image was developed using NaQ™ ECL Substrate Kit (Cat#716).

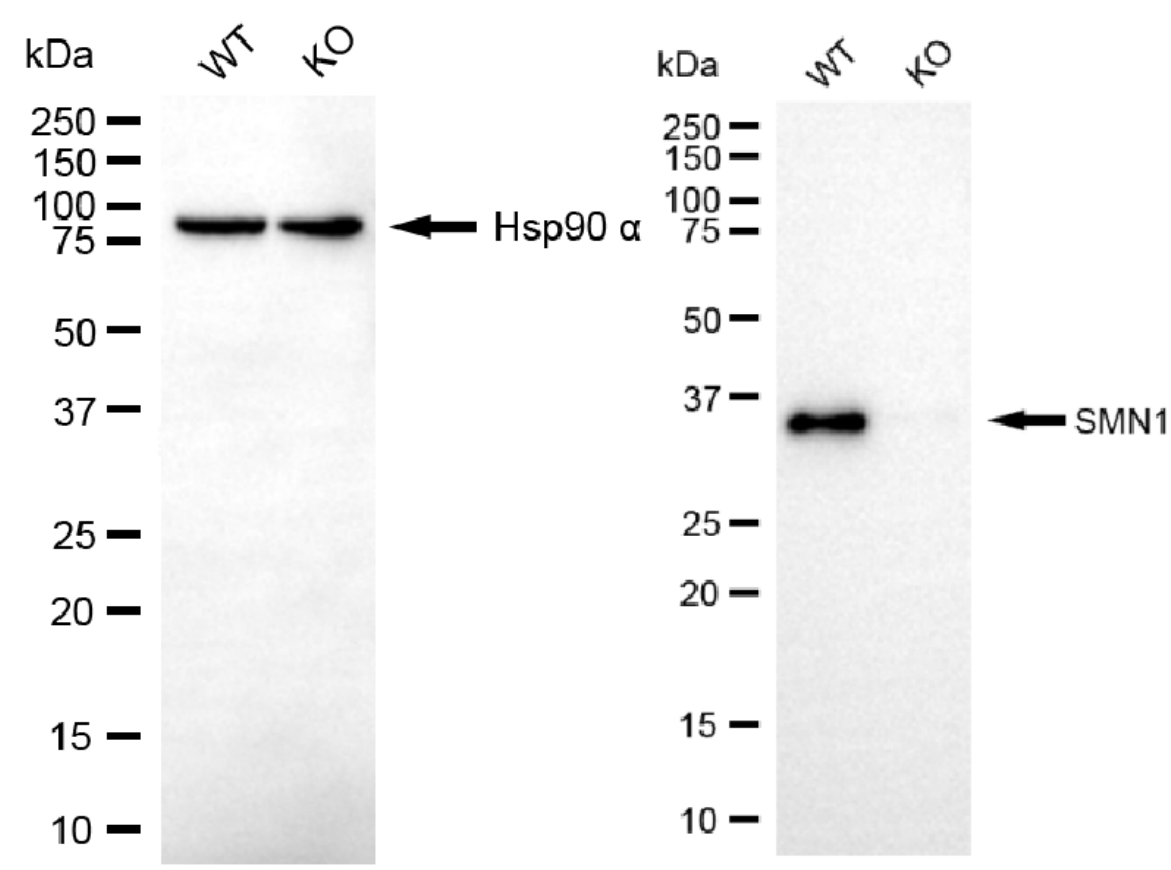
### SUPPORT

SUPPORT@GENUINBIOTECH.COM  
TEL: +1-540-855-7041

### ORDERS

SALES@GENUINBIOTECH.COM  
FAX: +1-540-855-7041

WWW.GENUINBIOTECH.COM



Copyright ©2025 Genuin Biotechnologies LLC

Western blotting analysis using anti-SMN1 antibody (Cat#71171). SMN1 expression in wild type (WT) and SMN1 knockout (KO) HeLa cells with 20 µg of total cell lysates. Hsp90 α serves as a loading control. The blot was incubated with anti-SMN1 antibody (Cat#71171, 1:5,000) and HRP-conjugated goat anti-rabbit secondary antibody (Cat#201, 1:20,000) respectively. Image was developed using NaQ™ ECL Substrate Kit (Cat#716).