

# KO-Validated Anti-14-3-3 alpha/beta Recombinant Rabbit Monoclonal Antibody



**Catalog #: 71174**

## Aliases

YWHAB; Tyrosine 3-Monooxygenase/Tryptophan 5-Monooxygenase Activation Protein Beta; Tyrosine 3-Monooxygenase/Tryptophan 5-Monooxygenase Activation Protein, Alpha Polypeptide; Tyrosine 3-Monooxygenase/Tryptophan 5-Monooxygenase Activation Protein, Beta Polypeptide; 14-3-3 Protein Beta/Alpha; 14-3-3 Alpha; Protein 1054; KCIP-1; YWHAA; Protein Kinase C Inhibitor Protein-1; Protein Kinase C Inhibitor Protein 1; Epididymis Secretory Protein Li 1; 14-3-3 Beta; HEL-S-1; GW128; HS1

## Background

Gene Name: YWHAB

NCBI Gene Entry: [7529](#)

UniProt Entry: [P31946](#)

## Application Information

Molecular Weight: Predicted, 28 kDa, observed, 28 kDa

Clonality: Rabbit monoclonal antibody

Clone ID: 25GB2045

Species Reactivity: Human, mouse, rat

Applications Tested: Western blotting (WB), flow cytometry (FCM), immunocytochemistry (IC)

## Immunogen

A synthesized peptide derived from human 14-3-3 alpha + beta

## Isotype

Rabbit IgG

## Storage Buffer

Supplied in PBS (pH 7.4) containing 50% glycerol, and 0.02% sodium azide.

## Storage

Store at -20 °C for one year.

## Recommended Dilutions

Western blotting (WB): 1:1,000-1:5,000

Flow Cytometry (FCM): 1:2,000

Immunocytochemistry (IC): 1:100-1:1,000

---

### SUPPORT

SUPPORT@GENUINBIOTECH.COM  
TEL: +1-540-855-7041

### ORDERS

SALES@GENUINBIOTECH.COM  
FAX: +1-540-855-7041

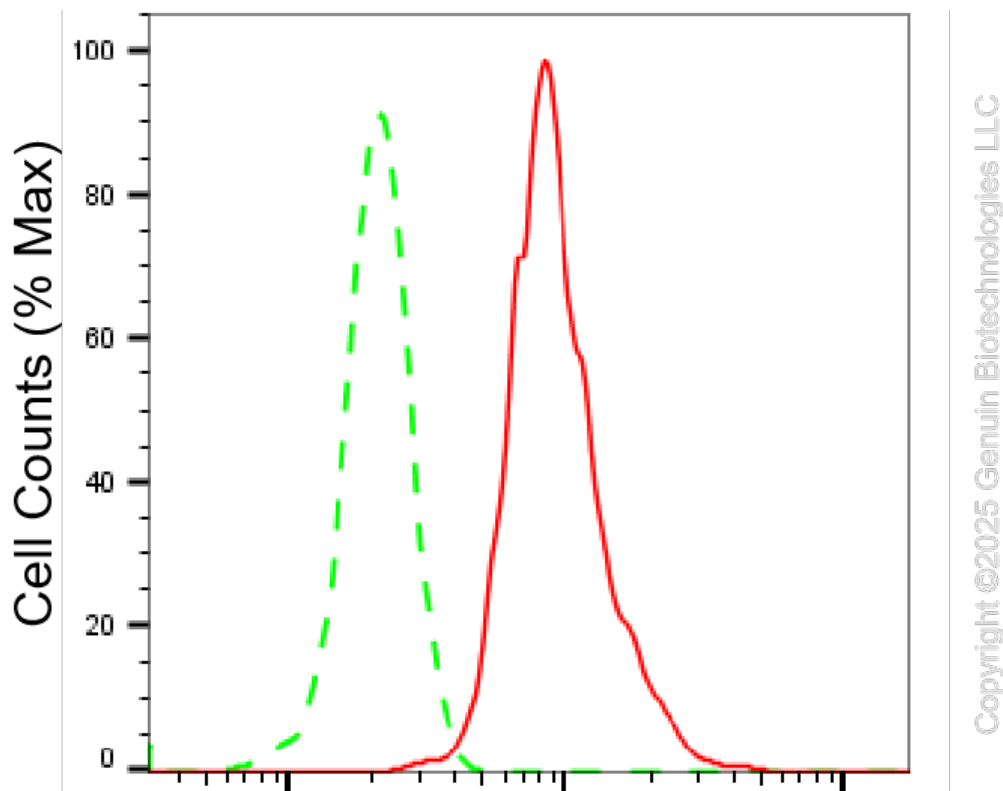
[WWW.GENUINBIOTECH.COM](http://WWW.GENUINBIOTECH.COM)

## KO-Validated Anti-14-3-3 alpha/beta Recombinant Rabbit Monoclonal Antibody

PAGE 2

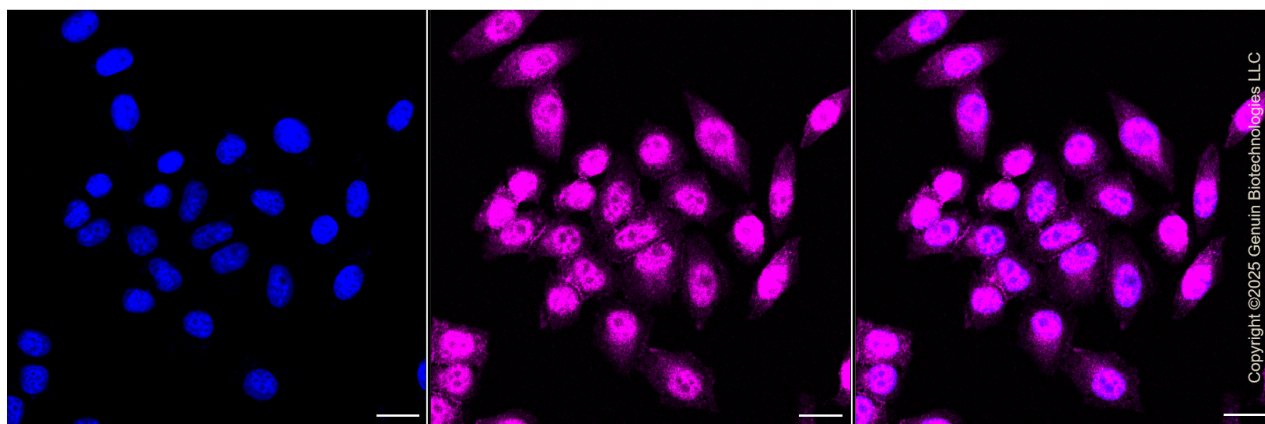
**Note:** This product is for research use only.

### Validation Data



### 14-3-3 alpha/beta-Alexa Fluor® 647

Flow cytometric analysis of 14-3-3 alpha/beta expression in HepG2 cells using 14-3-3 alpha/beta antibody (Cat#71174, 1:2,000). Green, isotype control; red, 14-3-3 alpha/beta.



Immunocytochemical staining of HepG2 cells with anti-14-3-3 alpha/beta antibody (Cat#71174, 1:1,000). Nuclei were stained blue with DAPI; 14-3-3 alpha/beta was stained magenta with Alexa

#### SUPPORT

SUPPORT@GENUINBIOTECH.COM  
TEL: +1-540-855-7041

#### ORDERS

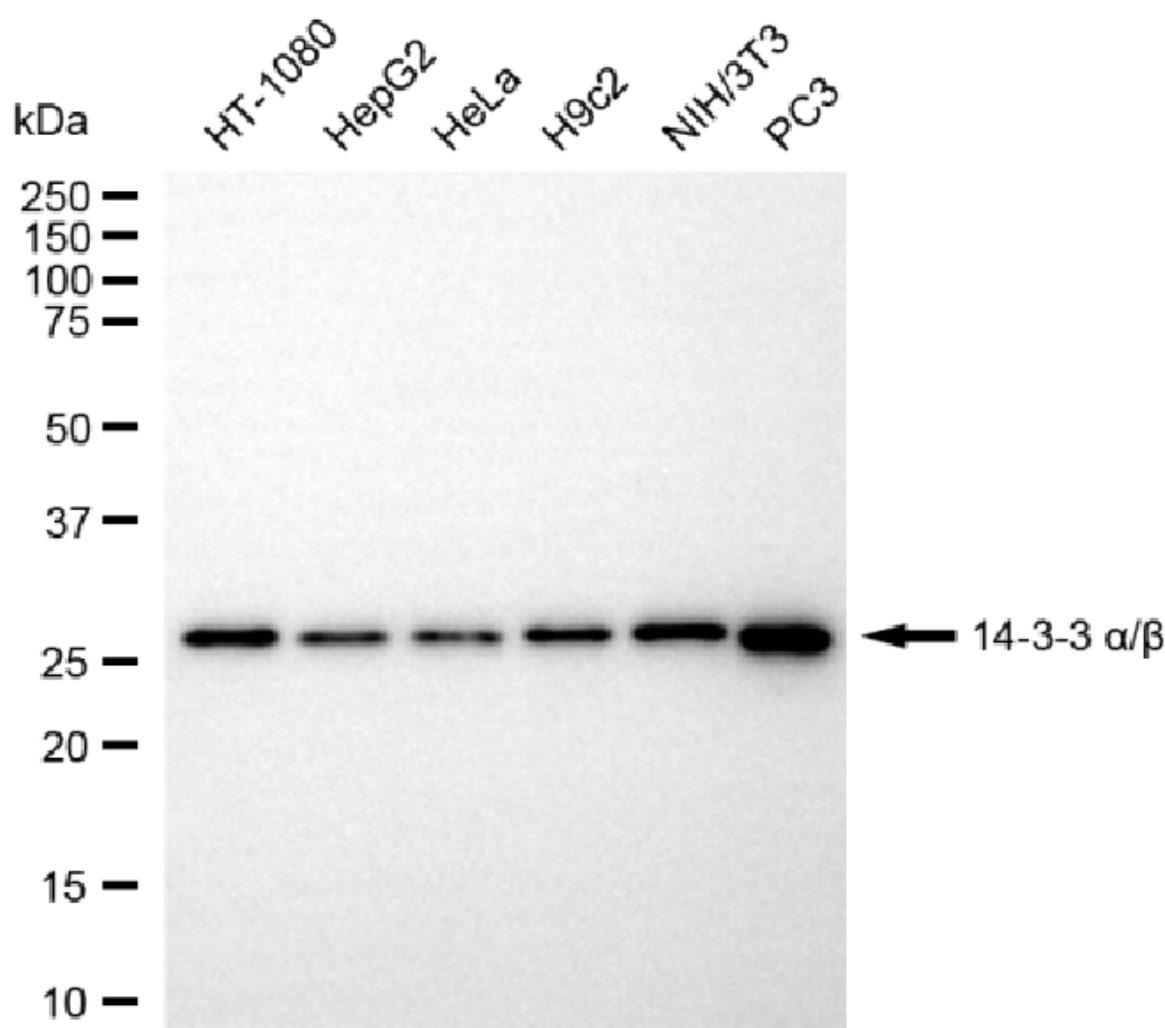
SALES@GENUINBIOTECH.COM  
FAX: +1-540-855-7041

WWW.GENUINBIOTECH.COM

## KO-Validated Anti-14-3-3 alpha/beta Recombinant Rabbit Monoclonal Antibody

PAGE 3

Fluor® 647. Images were taken using Leica stellaris 5. Protein abundance based on laser Intensity and smart gain: Medium. Scale bar, 20  $\mu$ m.



Copyright ©2025 Genuin Biotechnologies LLC

Western blotting analysis using anti-14-3-3  $\alpha/\beta$  antibody (Cat#71174). Total cell lysates (30  $\mu$ g) from various cell lines were loaded and separated by SDS-PAGE. The blot was incubated with anti-14-3-3  $\alpha/\beta$  antibody (Cat#71174, 1:5,000) and HRP-conjugated goat anti-rabbit secondary antibody (Cat#201, 1:20,000) respectively. Image was developed using NaQ™ ECL Substrate Kit (Cat#716).

### SUPPORT

SUPPORT@GENUINBIOTECH.COM  
TEL: +1-540-855-7041

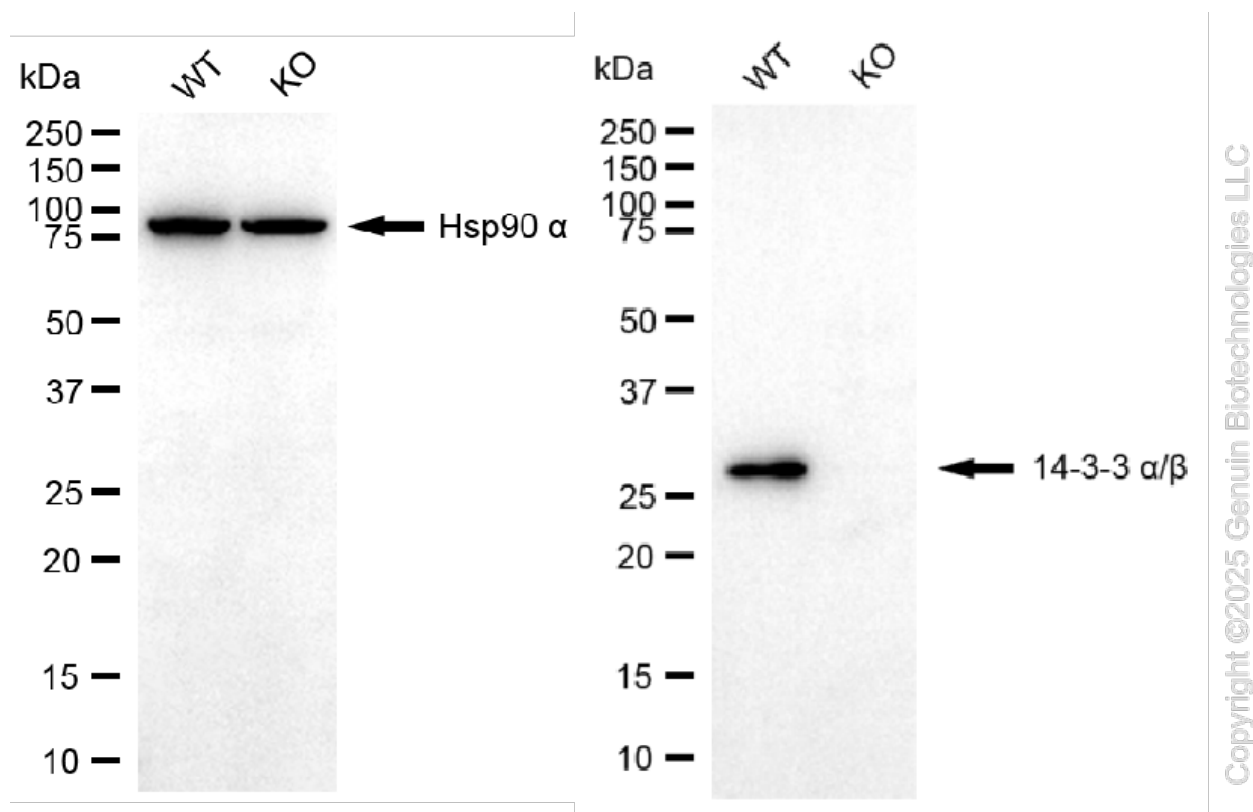
### ORDERS

SALES@GENUINBIOTECH.COM  
FAX: +1-540-855-7041

WWW.GENUINBIOTECH.COM

## KO-Validated Anti-14-3-3 alpha/beta Recombinant Rabbit Monoclonal Antibody

PAGE 4



Western blotting analysis using anti-14-3-3 alpha/beta antibody (Cat#71174). 14-3-3 alpha/beta expression in wild-type (WT) and YWHAB knockout (KO) HSHC cells with 20  $\mu$ g of total cell lysates. Hsp90  $\alpha$  serves as a loading control. The blot was incubated with anti-14-3-3 alpha/beta antibody (Cat#71174, 1:5,000) and HRP-conjugated goat anti-rabbit secondary antibody (Cat#201, 1:20,000) respectively. Image was developed using NaQ<sup>TM</sup> ECL Substrate Kit (Cat#716).

### SUPPORT

SUPPORT@GENUINBIOTECH.COM  
TEL: +1-540-855-7041

### ORDERS

SALES@GENUINBIOTECH.COM  
FAX: +1-540-855-7041

[WWW.GENUINBIOTECH.COM](http://WWW.GENUINBIOTECH.COM)