

KO-Validated Anti-SMAC Rabbit Monoclonal Antibody



Catalog #: 71175

Aliases

Diablo; IAP-Binding Mitochondrial Protein; DFNA64; Second Mitochondria-Derived Activator Of Caspase; Diablo Homolog; Mitochondrial; SMAC; Smac; Direct IAP-Binding Protein With Low PI

Background

Gene Name: DIABLO

NCBI Gene Entry: [56616](#)

UniProt Entry: [Q9NR28](#)

Application Information

Molecular Weight: Predicted, 27 kDa; observed, 21 kDa

Clonality: Rabbit monoclonal antibody

Clone ID: 25GB2055

Species Reactivity: Human, mouse, rat

Applications Tested: Western blotting (WB), flow cytometry (FCM), immunocytochemistry (IC)

Immunogen

A synthesized peptide derived from human Smac/Diablo

Isotype

Rabbit IgG

Storage Buffer

Supplied in PBS (pH 7.4) containing 50% glycerol, and 0.02% sodium azide.

Storage

Store at -20 °C for one year.

Recommended Dilutions

Western Blotting (WB): 1:1,000-1:5,000

Flow Cytometry (FCM): 1:2,000

Immunocytochemistry (IC): 1:100-1:1,000

Note: This product is for research use only.

SUPPORT

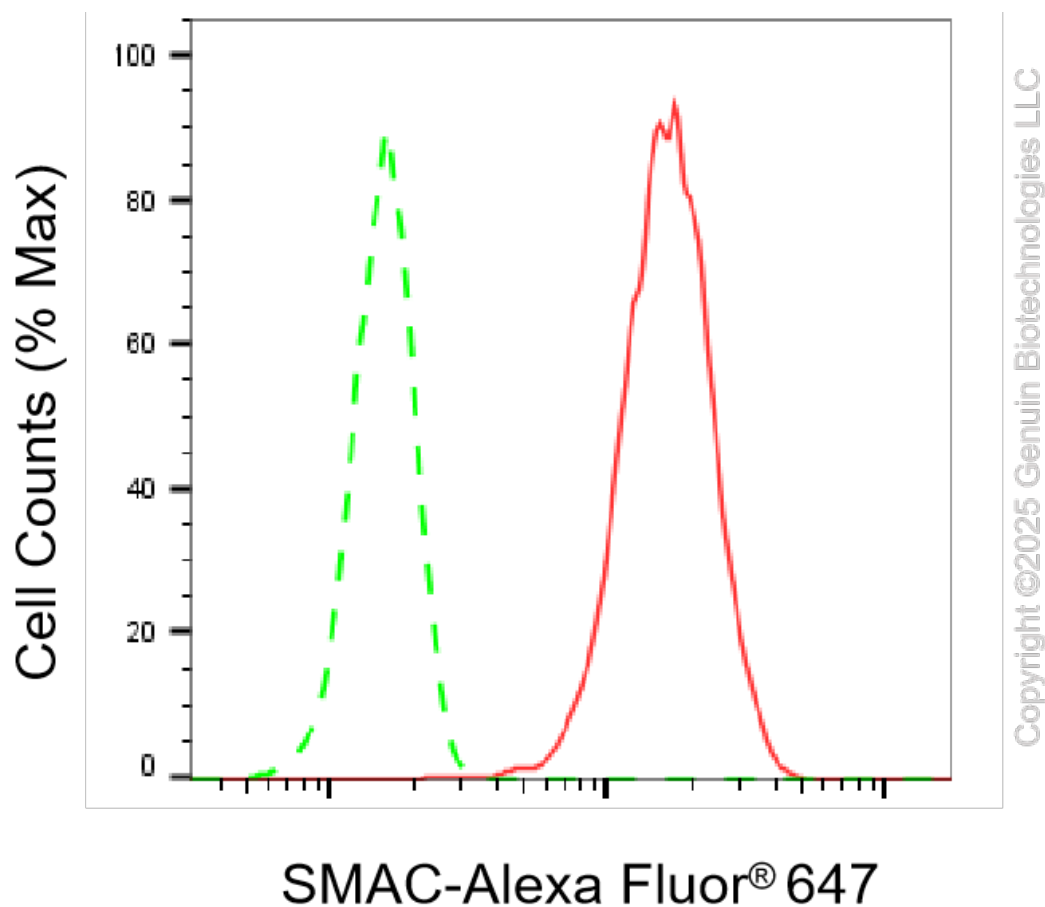
SUPPORT@GENUINBIOTECH.COM
TEL: +1-540-855-7041

ORDERS

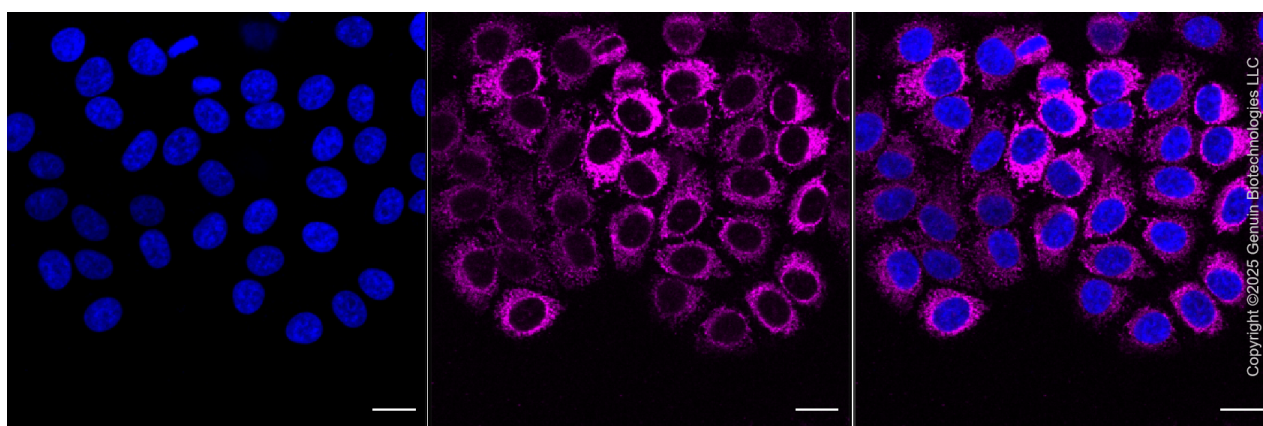
SALES@GENUINBIOTECH.COM
FAX: +1-540-855-7041

WWW.GENUINBIOTECH.COM

Validation Data



Flow cytometric analysis of SMAC expression in HepG2 cells using SMAC antibody (Cat#71175, 1:2,000). Green, isotype control; red, SMAC.



Immunocytochemical staining of HepG2 cells with anti-SMAC antibody (Cat#71175, 1:1,000). Nuclei were stained blue with DAPI; SMAC was stained magenta with Alexa Fluor® 647. Images were taken using Leica stellaris 5. Protein abundance based on laser Intensity and smart gain: High. Scale bar, 20 μ m.

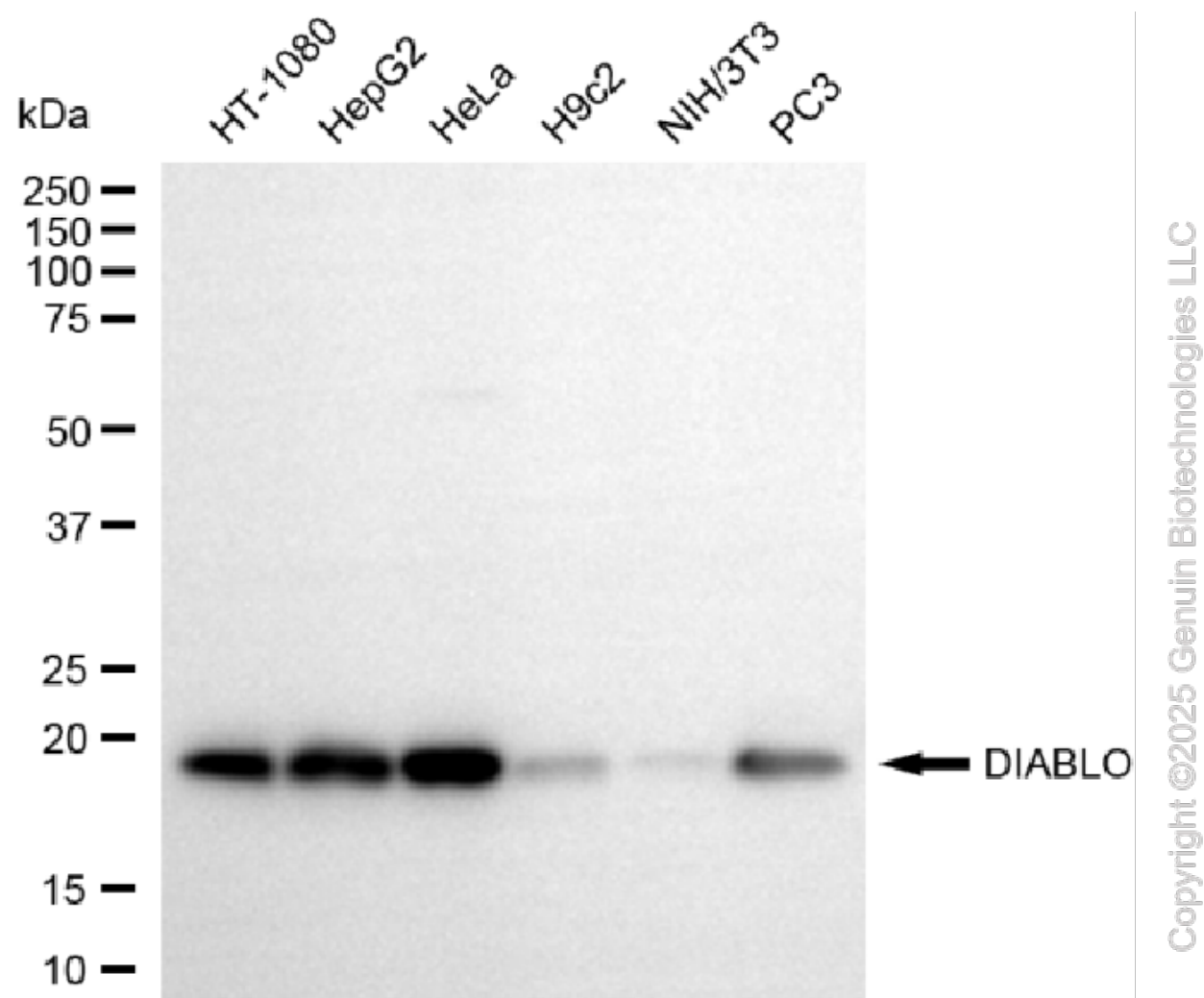
SUPPORT

SUPPORT@GENUINBIOTECH.COM
TEL: +1-540-855-7041

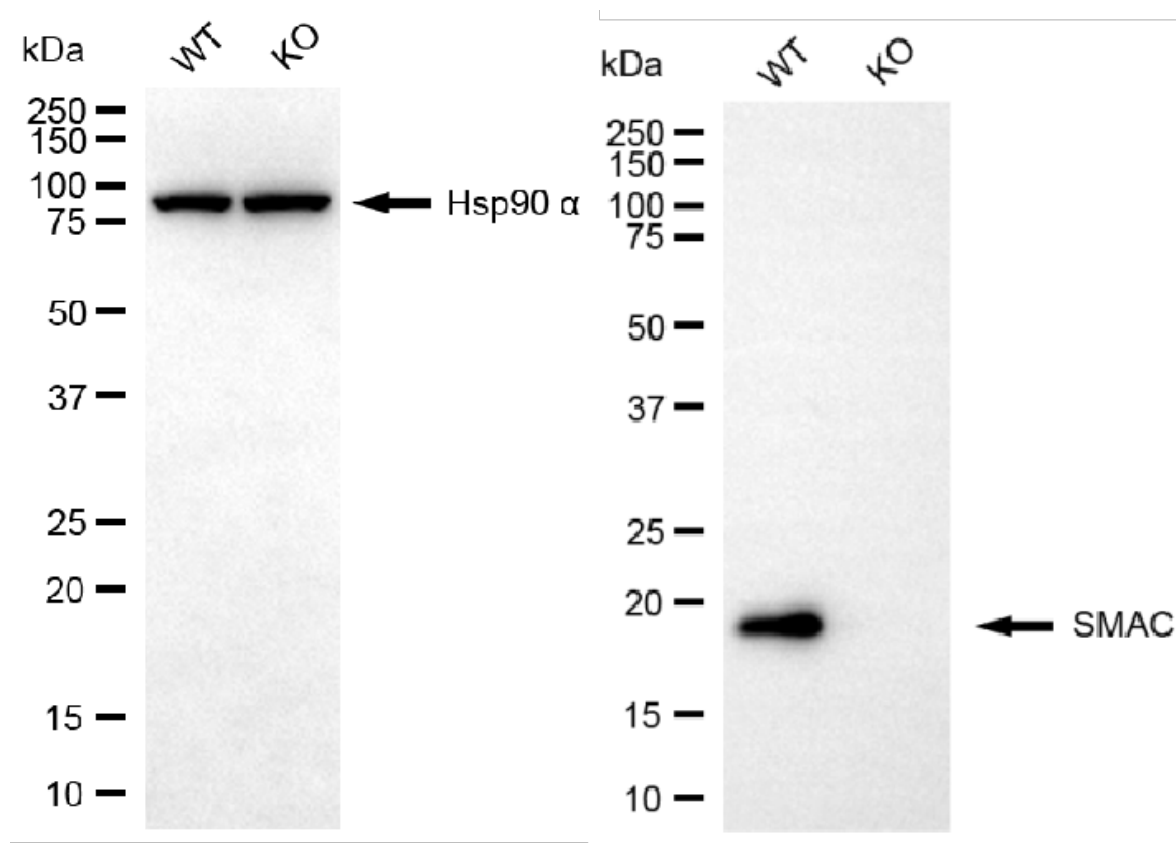
ORDERS

SALES@GENUINBIOTECH.COM
FAX: +1-540-855-7041

WWW.GENUINBIOTECH.COM



Western blotting analysis using anti-DIABLO antibody (Cat#71175). Total cell lysates (30 μ g) from various cell lines were loaded and separated by SDS-PAGE. The blot was incubated with anti-DIABLO antibody (Cat#71175, 1:5,000) and HRP-conjugated goat anti-rabbit secondary antibody (Cat#201, 1:20,000) respectively. Image was developed using NaQTM ECL Substrate Kit (Cat#716).



Copyright ©2025 Genuin Biotechnologies LLC

Western blotting analysis using anti-SMAC antibody (Cat#71175). SMAC expression in wild-type (WT) and DIABLO knockout (KO) 293T cells with 20 μ g of total cell lysates. Hsp90 α serves as a loading control. The blot was incubated with anti-SMAC antibody (Cat#71175, 1:5,000) and HRP-conjugated goat anti-rabbit secondary antibody (Cat#201, 1:20,000) respectively. Image was developed using NaQ™ ECL Substrate Kit (Cat#716).