

KO-Validated Anti-Integrin subunit alpha 4 Recombinant Rabbit Monoclonal Antibody



Catalog #: 71181

Aliases

ITGA4; Integrin Subunit Alpha 4; CD49D; Alpha 4 Subunit Of VLA-4 Receptor; CD49 Antigen-Like Family Member D; VLA-4 Subunit Alpha; Integrin Alpha-IV; Integrin Alpha-4; Integrin, Alpha 4 (Antigen CD49D, Alpha 4 Subunit Of VLA-4 Receptor); Very Late Activation Protein 4 Receptor, Alpha 4 Subunit; Antigen CD49D, Alpha-4 Subunit Of VLA-4 Receptor; 269C Wild Type; Antigen CD49D; CD49d Antigen; CD49d; IA4

Background

Gene Name: ITGA4

NCBI Gene Entry: [3676](#)

UniProt Entry: [P13612](#)

Application Information

Molecular Weight: Predicted, 115 kDa; observed, 70,140,150 kDa

Clonality: Rabbit monoclonal antibody

Clone ID: 25GB2175

Species Reactivity: Human

Applications Tested: Western blotting (WB), flow cytometry (FCM), immunocytochemistry (IC)

Immunogen

A synthesized peptide derived from human Integrin alpha 4

Isotype

Rabbit IgG

Storage Buffer

Supplied in PBS (pH 7.4) containing 50% glycerol, and 0.02% sodium azide.

Storage

Store at -20 °C for one year.

Recommended Dilutions

Western Blotting (WB): 1:1,000-1:5,000

Flow Cytometry (FCM): 1:2,000

Immunocytochemistry (IC): 1:100-1:1,000

SUPPORT

SUPPORT@GENUINBIOTECH.COM
TEL: +1-540-855-7041

ORDERS

SALES@GENUINBIOTECH.COM
FAX: +1-540-855-7041

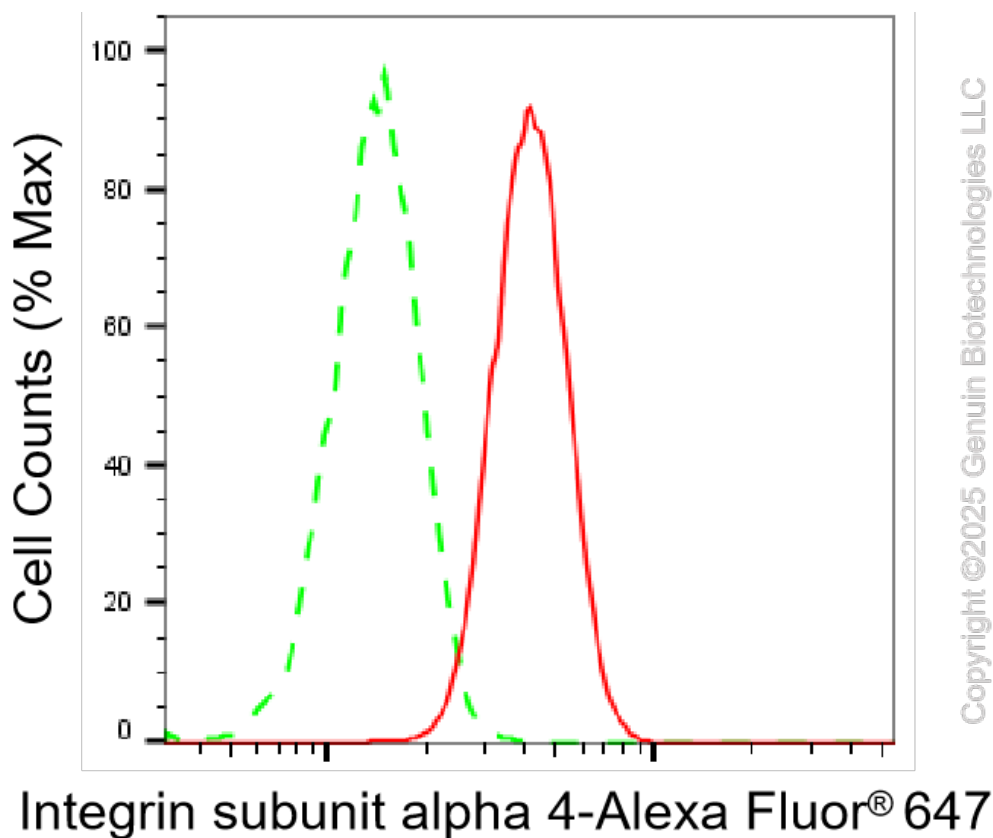
WWW.GENUINBIOTECH.COM

KO-Validated Anti-Integrin subunit alpha 4 Recombinant Rabbit Monoclonal Antibody

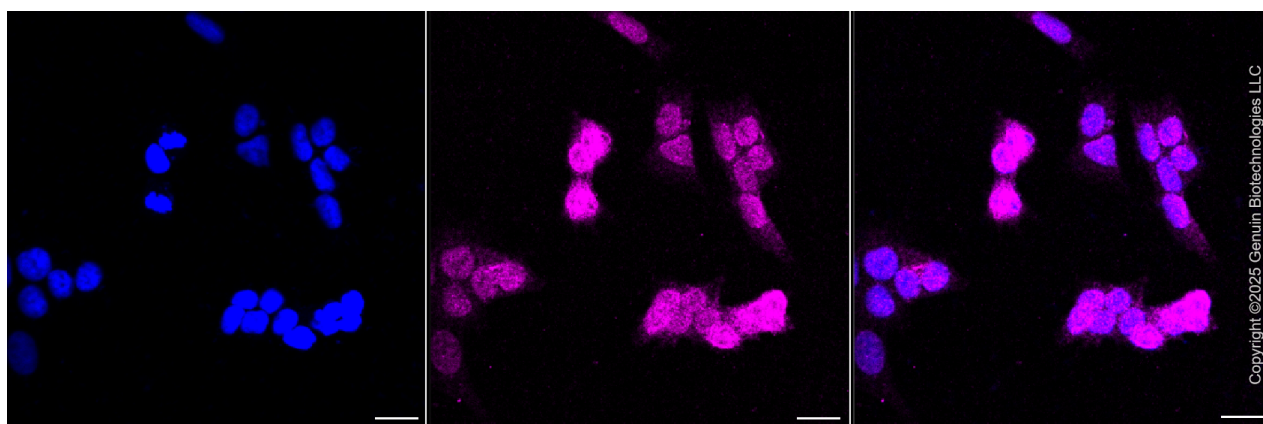
PAGE 2

Note: This product is for research use only.

Validation Data



Flow cytometric analysis of Integrin subunit alpha 4 expression in HAP-1 cells using Integrin subunit alpha 4 antibody (Cat#71181, 1:2,000). Green, isotype control; red, Integrin subunit alpha 4.



Immunocytochemical staining of HAP-1 cells with anti-Integrin subunit alpha 4 antibody (Cat#71181, 1:1,000). Nuclei were stained blue with DAPI; Integrin subunit alpha 4 was stained magenta with Alexa Fluor® 647. Images were taken using Leica stellaris 5. Protein abundance

SUPPORT

SUPPORT@GENUINBIOTECH.COM
TEL: +1-540-855-7041

ORDERS

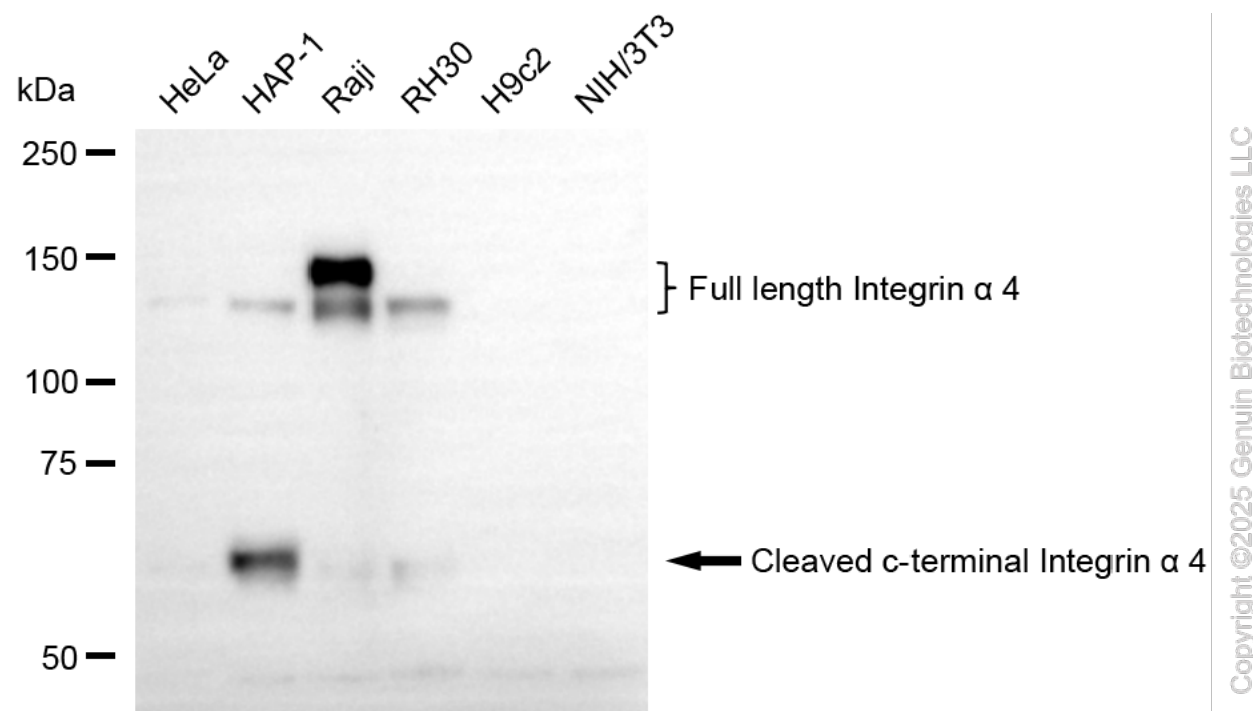
SALES@GENUINBIOTECH.COM
FAX: +1-540-855-7041

WWW.GENUINBIOTECH.COM

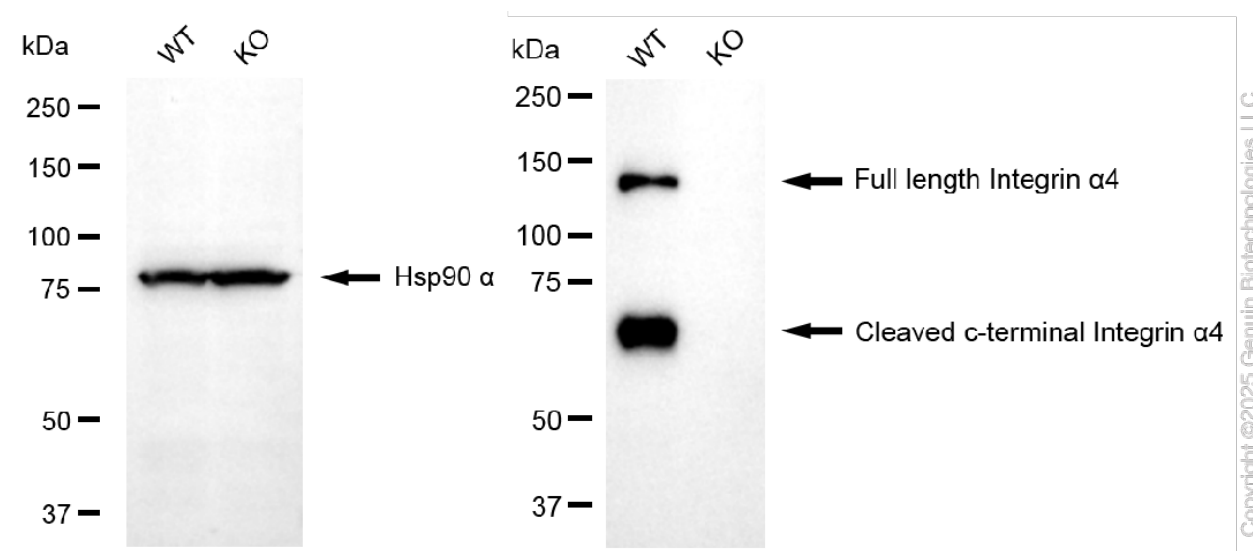
KO-Validated Anti-Integrin subunit alpha 4 Recombinant Rabbit Monoclonal Antibody

PAGE 3

based on laser Intensity and smart gain: Medium. Scale bar, 20 μ m.



Western blotting analysis using anti-integrin α 4 antibody (Cat#71181). Total cell lysates (30 μ g) from various cell lines were loaded and separated by SDS-PAGE. The blot was incubated with anti-integrin α 4 antibody (Cat#71181, 1:5,000) and HRP-conjugated goat anti-rabbit secondary antibody (Cat#201, 1:20,000) respectively. Image was developed using FeQ™ ECL Substrate Kit (Cat#226).



Western blotting analysis using anti-integrin subunit alpha 4 antibody (Cat#71181). Integrin subunit alpha 4 expression in wild-type (WT) and integrin subunit alpha 4 (ITGA4) knockout (KO) HeLa cells with 20 μ g of total cell lysates. Hsp90 α serves as a loading control. The blot was

SUPPORT

SUPPORT@GENUINBIOTECH.COM
TEL: +1-540-855-7041

ORDERS

SALES@GENUINBIOTECH.COM
FAX: +1-540-855-7041

WWW.GENUINBIOTECH.COM

KO-Validated Anti-Integrin subunit alpha 4 Recombinant Rabbit Monoclonal Antibody

PAGE 4

incubated with anti-integrin subunit alpha 4 antibody (Cat#71181, 1:5,000) and HRP-conjugated goat anti-rabbit secondary antibody (Cat#201, 1:20,000) respectively. Image was developed using NaQ™ ECL Substrate Kit (Cat#716).

SUPPORT

SUPPORT@GENUINBIOTECH.COM
TEL: +1-540-855-7041

ORDERS

SALES@GENUINBIOTECH.COM
FAX: +1-540-855-7041

WWW.GENUINBIOTECH.COM