

# KO-Validated Anti-DDAH2 Recombinant Rabbit Monoclonal Antibody



**Catalog #: 71182**

## Aliases

DDAH2; DDAH Family Member 2, ADMA-Independent; Dimethylarginine Dimethylaminohydrolase; DDAHII; G6A; N(G),N(G)-Dimethylarginine Dimethylaminohydrolase; Dimethylargininase-2; S-Phase Protein; EC 3.5.3.18; DDAH; NG30; Dimethylarginine Dimethylaminohydrolase II; Testis Tissue Sperm-Binding Protein Li 54e; Epididymis Secretory Protein Li 277; Protein G6a; HEL-S-277; DDAH-2; G6a

## Background

Gene Name: DDAH2

NCBI Gene Entry: [23564](#)

UniProt Entry: [O95865](#)

## Application Information

Molecular Weight: Predicted, 30 kDa; observed, 30 kDa

Clonality: Rabbit monoclonal antibody

Clone ID: 25GB2225

Species Reactivity: Human, mouse, rat

Applications Tested: Western blotting (WB), flow cytometry (FCM), immunocytochemistry (IC)

## Immunogen

A synthesized peptide derived from human DDAH2

## Isotype

Rabbit IgG

## Storage Buffer

Supplied in PBS (pH 7.4) containing 50% glycerol, and 0.02% sodium azide.

## Storage

Store at -20 °C for one year.

## Recommended Dilutions

Western blotting (WB): 1:1,000-1:5,000

Flow Cytometry (FCM): 1:2,000

Immunocytochemistry (IC): 1:100-1:1,000

---

### SUPPORT

SUPPORT@GENUINBIOTECH.COM  
TEL: +1-540-855-7041

### ORDERS

SALES@GENUINBIOTECH.COM  
FAX: +1-540-855-7041

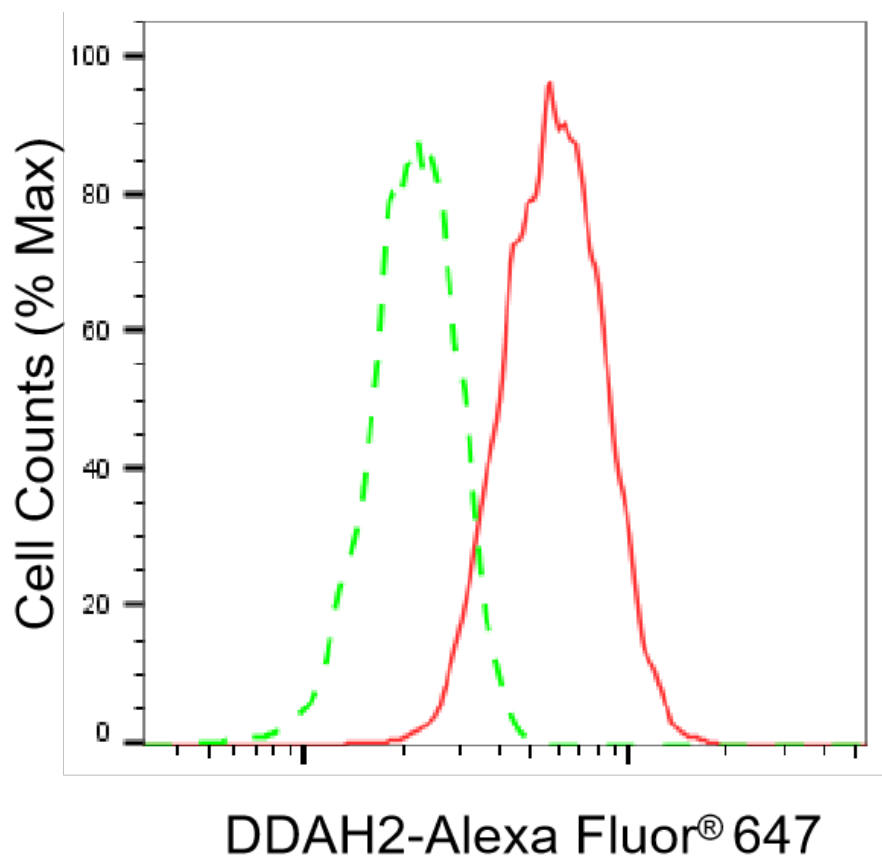
[WWW.GENUINBIOTECH.COM](http://WWW.GENUINBIOTECH.COM)

## KO-Validated Anti-DDAH2 Recombinant Rabbit Monoclonal Antibody

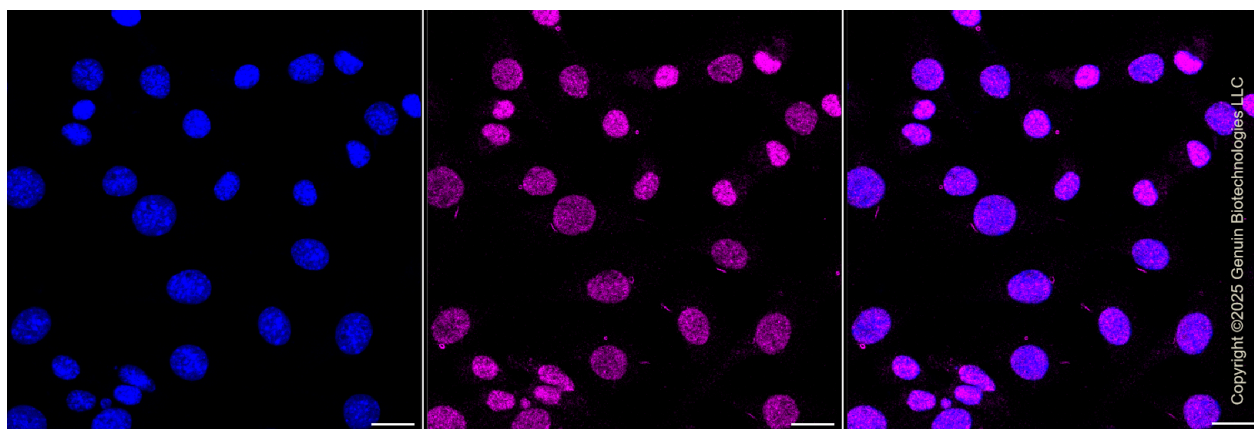
PAGE 2

**Note:** This product is for research use only.

### Validation Data



Flow cytometric analysis of DDAH2 expression in C2C12 cells using DDAH2 antibody (Cat#71182, 1:2,000). Green, isotype control; red, DDAH2.



Immunocytochemical staining of C2C12 cells with DDAH2 antibody (Cat#71182, 1:1,000). Nuclei were stained blue with DAPI; DDAH2 was stained magenta with Alexa Fluor® 647. Images were taken using Leica stellaris 5. Protein abundance based on laser Intensity and smart

#### SUPPORT

SUPPORT@GENUINBIOTECH.COM  
TEL: +1-540-855-7041

#### ORDERS

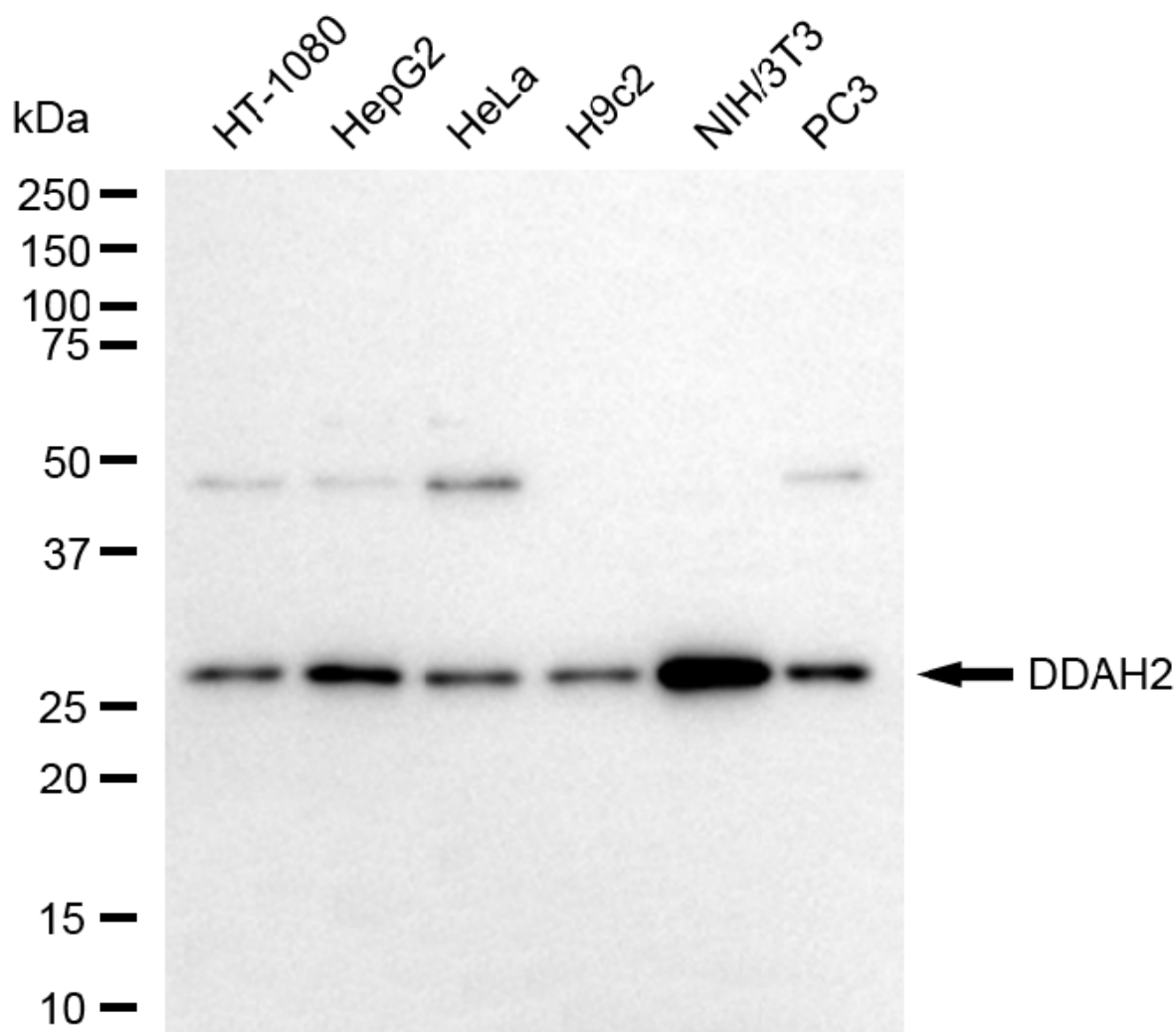
SALES@GENUINBIOTECH.COM  
FAX: +1-540-855-7041

[WWW.GENUINBIOTECH.COM](http://WWW.GENUINBIOTECH.COM)

## KO-Validated Anti-DDAH2 Recombinant Rabbit Monoclonal Antibody

PAGE 3

gain: Medium. Scale bar, 20  $\mu$ m.



Copyright ©2025 Genuin Biotechnologies LLC

Western blotting analysis using anti-DDAH2 antibody (Cat#71182). Total cell lysates (30  $\mu$ g) from various cell lines were loaded and separated by SDS-PAGE. The blot was incubated with anti-DDAH2 antibody (Cat#71182, 1:5,000) and HRP-conjugated goat anti-rabbit secondary antibody (Cat#201, 1:20,000) respectively. Image was developed using NaQ™ ECL Substrate Kit (Cat#716).

### SUPPORT

SUPPORT@GENUINBIOTECH.COM  
TEL: +1-540-855-7041

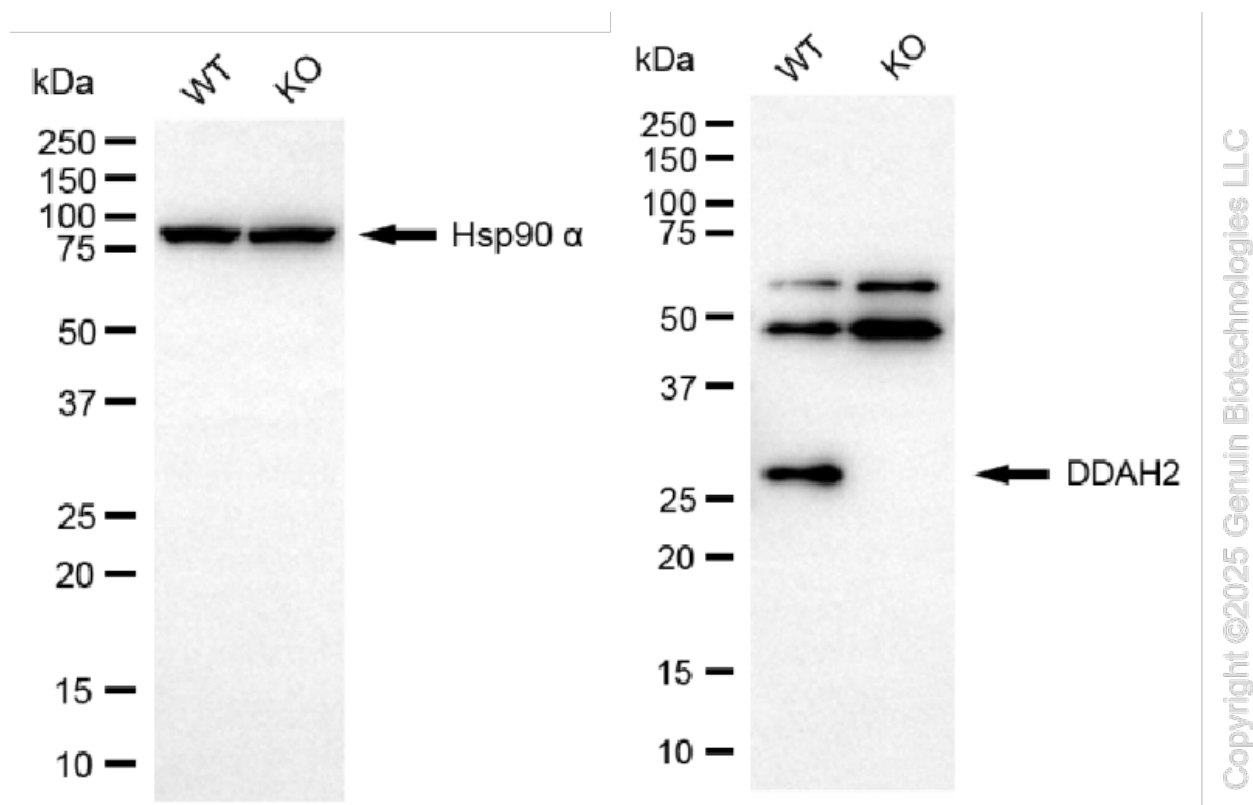
### ORDERS

SALES@GENUINBIOTECH.COM  
FAX: +1-540-855-7041

WWW.GENUINBIOTECH.COM

## KO-Validated Anti-DDAH2 Recombinant Rabbit Monoclonal Antibody

PAGE 4



Western blotting analysis using anti-DDAH2 antibody (Cat#71182). DDAH2 expression in wild-type (WT) and DDAH2 knockout (KO) 293T cells with 20  $\mu$ g of total cell lysates. Hsp90  $\alpha$  serves as a loading control. The blot was incubated with anti-DDAH2 antibody (Cat#71182, 1:5,000) and HRP-conjugated goat anti-rabbit secondary antibody (Cat#201, 1:20,000) respectively. Image was developed using NaQ™ ECL Substrate Kit (Cat#716).

### SUPPORT

SUPPORT@GENUINBIOTECH.COM  
TEL: +1-540-855-7041

### ORDERS

SALES@GENUINBIOTECH.COM  
FAX: +1-540-855-7041

[WWW.GENUINBIOTECH.COM](http://WWW.GENUINBIOTECH.COM)