

KO-Validated Anti-ELOVL5 Recombinant Rabbit Monoclonal Antibody



Catalog #: 71184

Aliases

ELOVL5; ELOVL Fatty Acid Elongase 5; HELO1; DJ483K16.1; ELOVL Family Member 5, Elongation Of Long Chain Fatty Acids (FEN1/Elo2, SUR4/Elo3-Like, Yeast); Elongation Of Very Long Chain Fatty Acids Protein 5; Very Long Chain 3-Ketoacyl-CoA Synthase 5; Very Long Chain 3-Oxoacyl-CoA Synthase 5; 3-Keto Acyl-CoA Synthase ELOVL5; Spinocerebellar Ataxia 38; Fatty Acid Elongase 1; ELOVL FA Elongase 5; SCA38; Homolog Of Yeast Long Chain Polyunsaturated Fatty Acid Elongation Enzyme; EC 2.3.1.199; ELOVL2

Background

Gene Name: ELOVL5

NCBI Gene Entry: [60481](#)

UniProt Entry: [Q9NYP7](#)

Application Information

Molecular Weight: Predicted, 35 kDa; observed, 26 kDa

Clonality: Rabbit monoclonal antibody

Clone ID: 25GB2255

Species Reactivity: Human

Applications Tested: Western blotting (WB), flow cytometry (FCM)

Immunogen

A synthesized peptide derived from human ELOVL5

Isotype

Rabbit IgG

Storage Buffer

Supplied in PBS (pH 7.4) containing 50% glycerol, and 0.02% sodium azide.

Storage

Store at -20 °C for one year.

Recommended Dilutions

Western blotting (WB): 1:1,000-1:5,000

Flow Cytometry (FCM): 1:2,000

SUPPORT

SUPPORT@GENUINBIOTECH.COM
TEL: +1-540-855-7041

ORDERS

SALES@GENUINBIOTECH.COM
FAX: +1-540-855-7041

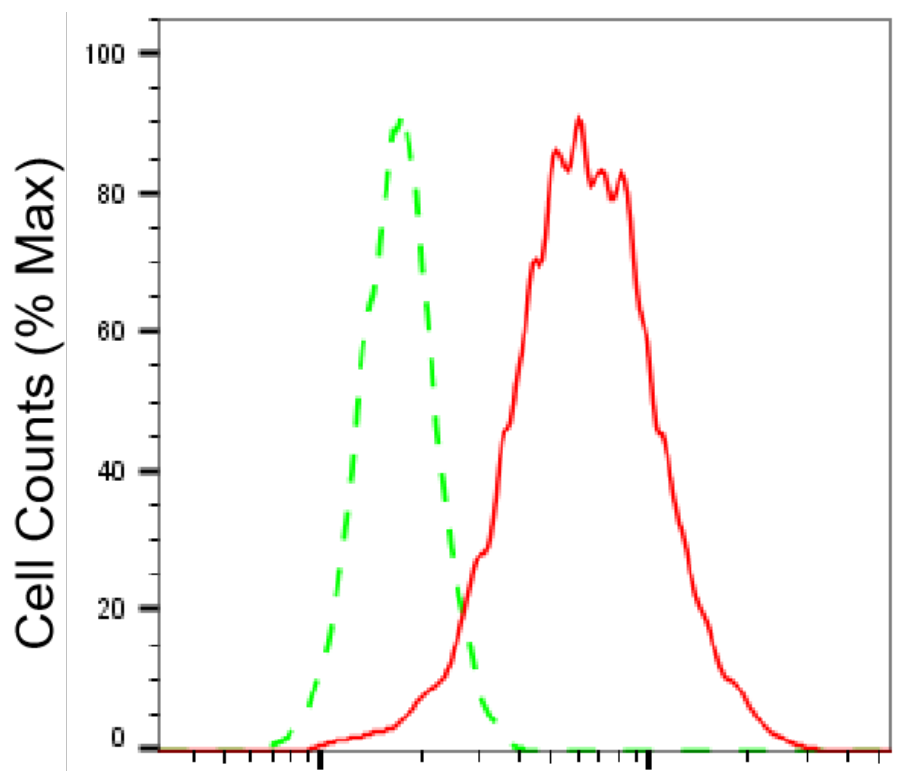
WWW.GENUINBIOTECH.COM

KO-Validated Anti-ELOVL5 Recombinant Rabbit Monoclonal Antibody

PAGE 2

Note: This product is for research use only.

Validation Data



Copyright ©2025 Genuin Biotechnologies LLC

ELOVL5-Alexa Fluor® 647

Flow cytometric analysis of ELOVL5 expression in HepG2 cells using ELOVL5 antibody (Cat#71184, 1:2,000). Green, isotype control; red, ELOVL5.

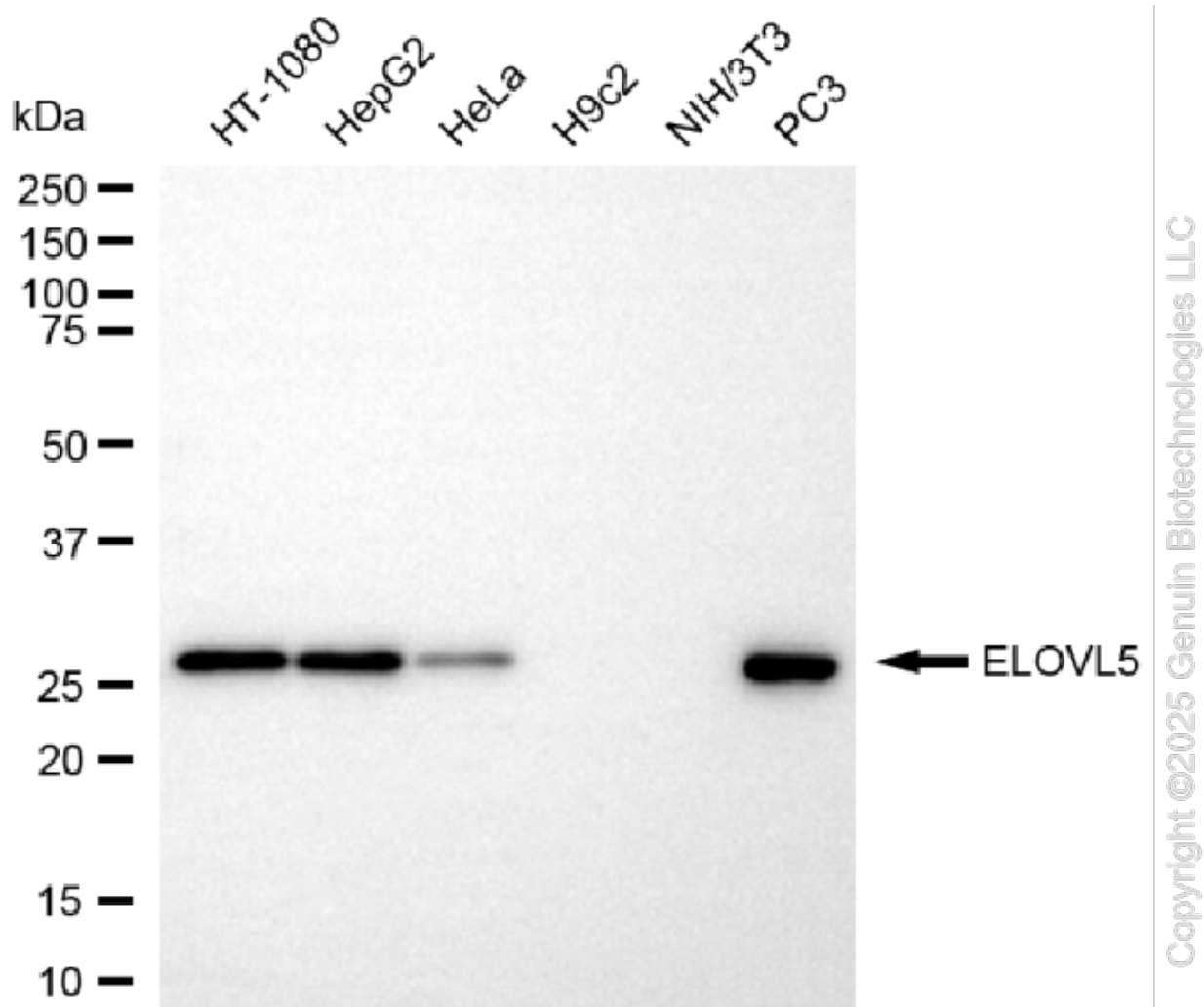
SUPPORT

SUPPORT@GENUINBIOTECH.COM
TEL: +1-540-855-7041

ORDERS

SALES@GENUINBIOTECH.COM
FAX: +1-540-855-7041

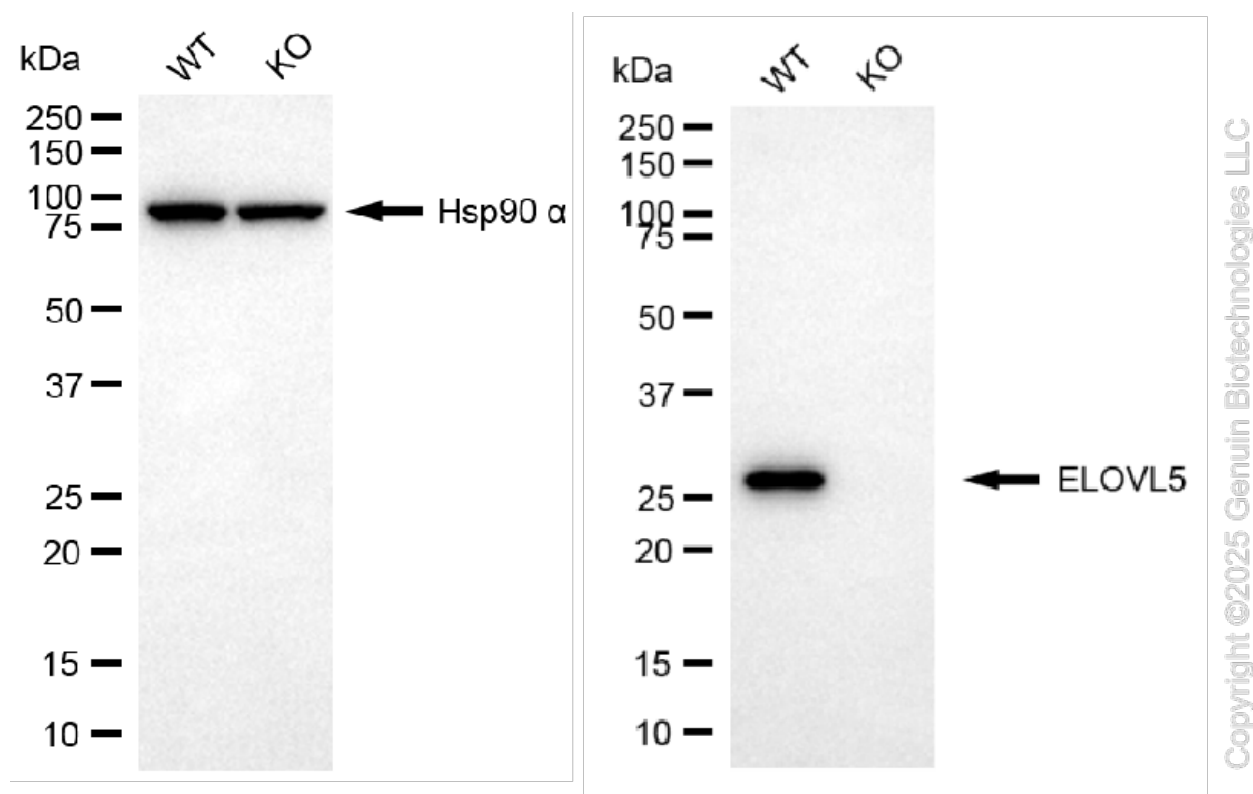
WWW.GENUINBIOTECH.COM



Western blotting analysis using anti-ELOVL5 antibody (Cat#71184). Total cell lysates (30 μ g) from various cell lines were loaded and separated by SDS-PAGE. The blot was incubated with anti-ELOVL5 antibody (Cat#71184, 1:5,000) and HRP-conjugated goat anti-rabbit secondary antibody (Cat#201, 1:20,000) respectively. Image was developed using NaQ™ ECL Substrate Kit (Cat#716).

KO-Validated Anti-ELOVL5 Recombinant Rabbit Monoclonal Antibody

PAGE 4



Western blotting analysis using anti-ELOVL5 antibody (Cat#71184). ELOVL5 expression in wild-type (WT) and ELOVL5 knockout (KO) 293T cells with 20 μ g of total cell lysates. Hsp90 α serves as a loading control. The blot was incubated with anti-ELOVL5 antibody (Cat#71184, 1:5,000) and HRP-conjugated goat anti-rabbit secondary antibody (Cat#201, 1:20,000) respectively. Image was developed using NaQ™ ECL Substrate Kit (Cat#716).

SUPPORT

SUPPORT@GENUINBIOTECH.COM
TEL: +1-540-855-7041

ORDERS

SALES@GENUINBIOTECH.COM
FAX: +1-540-855-7041

WWW.GENUINBIOTECH.COM