

# KO-Validated Anti-Creatine kinase B Recombinant Rabbit Monoclonal Antibody



**Catalog #: 71185**

## Aliases

CKB; Creatine Kinase B; CKBB; Creatine Phosphokinase B-Type; Creatine Kinase Brain-Type; Creatine Kinase B Chain; Creatine Kinase B-Type; Brain Creatine Kinase; EC 2.7.3.2; CPK-B; B-CK; Epididymis Secretory Protein Li 29; Epididymis Luminal Protein 211; Creatine Kinase, Brain; Creatine Kinase Brain; HEL-S-29; EC 2.7.3; HEL-211; BCK

## Background

Gene Name: CKB

NCBI Gene Entry: [1152](#)

UniProt Entry: [P12277](#)

## Application Information

Molecular Weight: Predicted, 43 kDa; observed, 43 kDa

Clonality: Rabbit monoclonal antibody

Clone ID: 25GB2265

Species Reactivity: Human

Applications Tested: Western blotting (WB), flow cytometry (FCM), immunocytochemistry (IC)

## Immunogen

A synthesized peptide derived from human Creatine kinase B type

## Isotype

Rabbit IgG

## Storage Buffer

Supplied in PBS (pH 7.4) containing 50% glycerol, and 0.02% sodium azide.

## Storage

Store at -20 °C for one year.

## Recommended Dilutions

Western Blotting (WB): 1:1,000-1:5,000

Flow Cytometry (FCM): 1:2,000

Immunocytochemistry (IC): 1:100-1:1,000

---

### SUPPORT

SUPPORT@GENUINBIOTECH.COM  
TEL: +1-540-855-7041

### ORDERS

SALES@GENUINBIOTECH.COM  
FAX: +1-540-855-7041

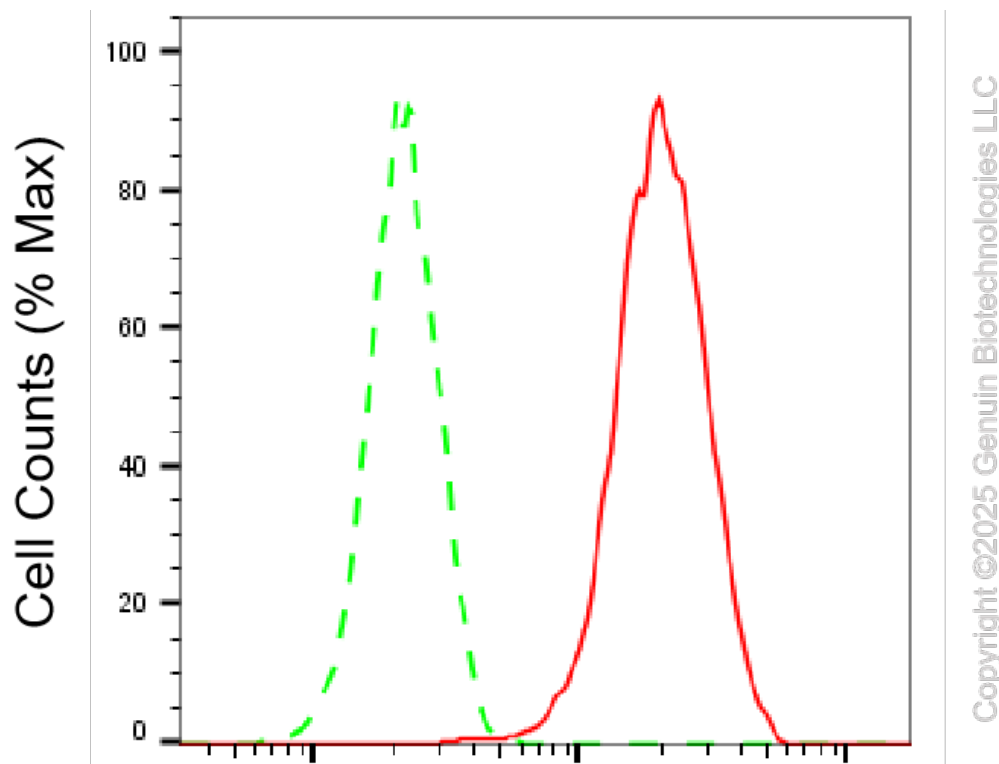
[WWW.GENUINBIOTECH.COM](http://WWW.GENUINBIOTECH.COM)

## KO-Validated Anti-Creatine kinase B Recombinant Rabbit Monoclonal Antibody

PAGE 2

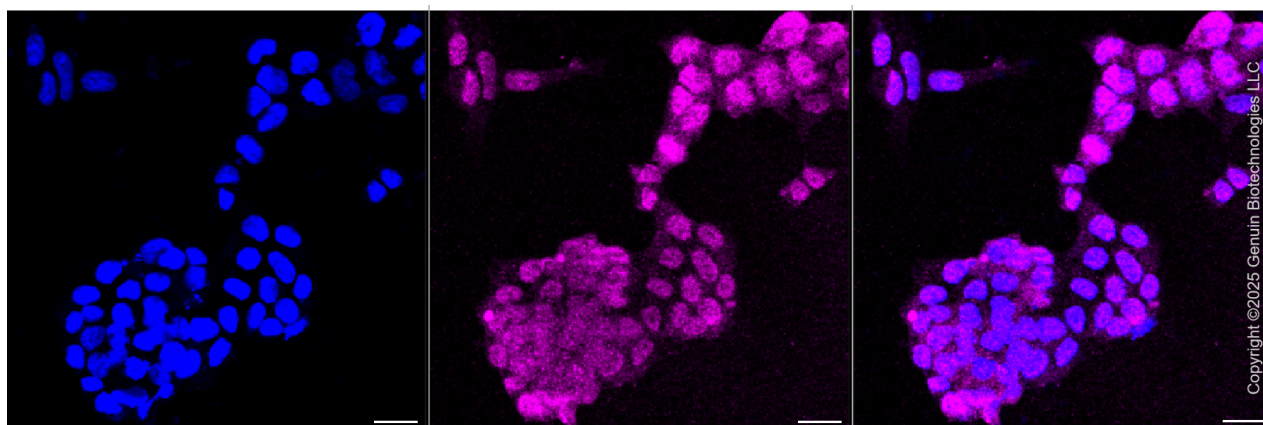
**Note:** This product is for research use only.

### Validation Data



### Creatine kinase B-Alexa Fluor® 647

Flow cytometric analysis of Creatine kinase B expression in HAP-1 cells using Creatine kinase B antibody (Cat#71185, 1:2,000). Green, isotype control; red, Creatine kinase B.



Immunocytochemical staining of HAP-1 cells with anti-Creatine kinase B antibody (Cat#71185, 1:1,000). Nuclei were stained blue with DAPI; Creatine kinase B was stained magenta with Alexa Fluor® 647. Images were taken using Leica stellaris 5. Protein abundance based on laser Intensity

#### SUPPORT

SUPPORT@GENUINBIOTECH.COM  
TEL: +1-540-855-7041

#### ORDERS

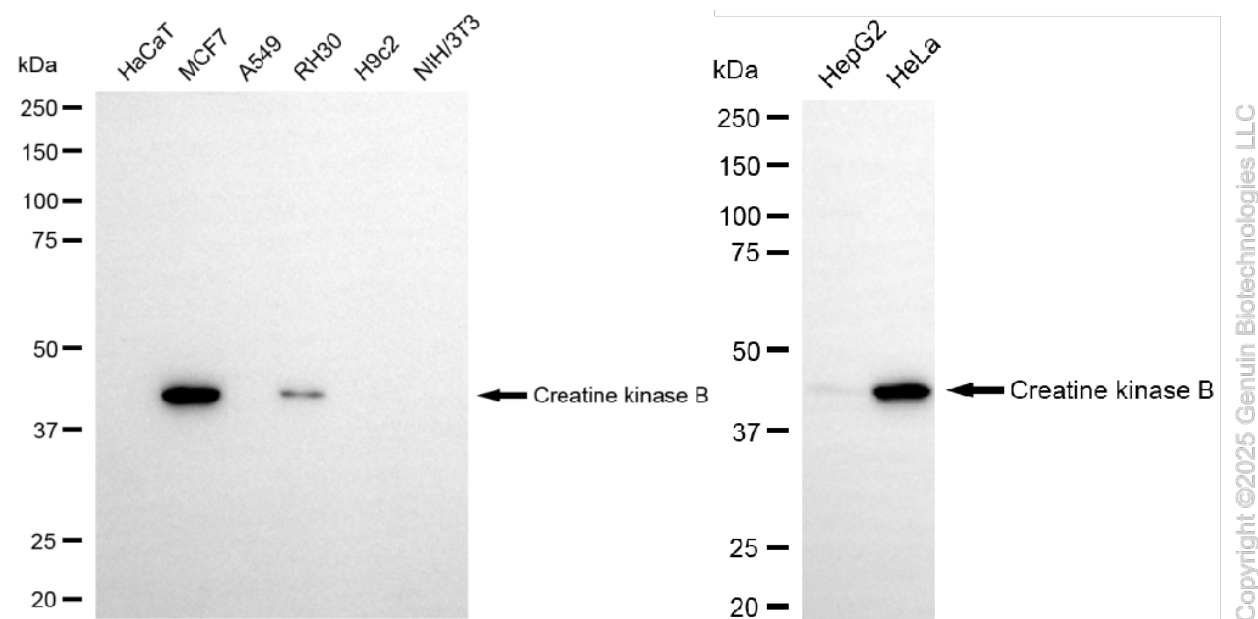
SALES@GENUINBIOTECH.COM  
FAX: +1-540-855-7041

[WWW.GENUINBIOTECH.COM](http://WWW.GENUINBIOTECH.COM)

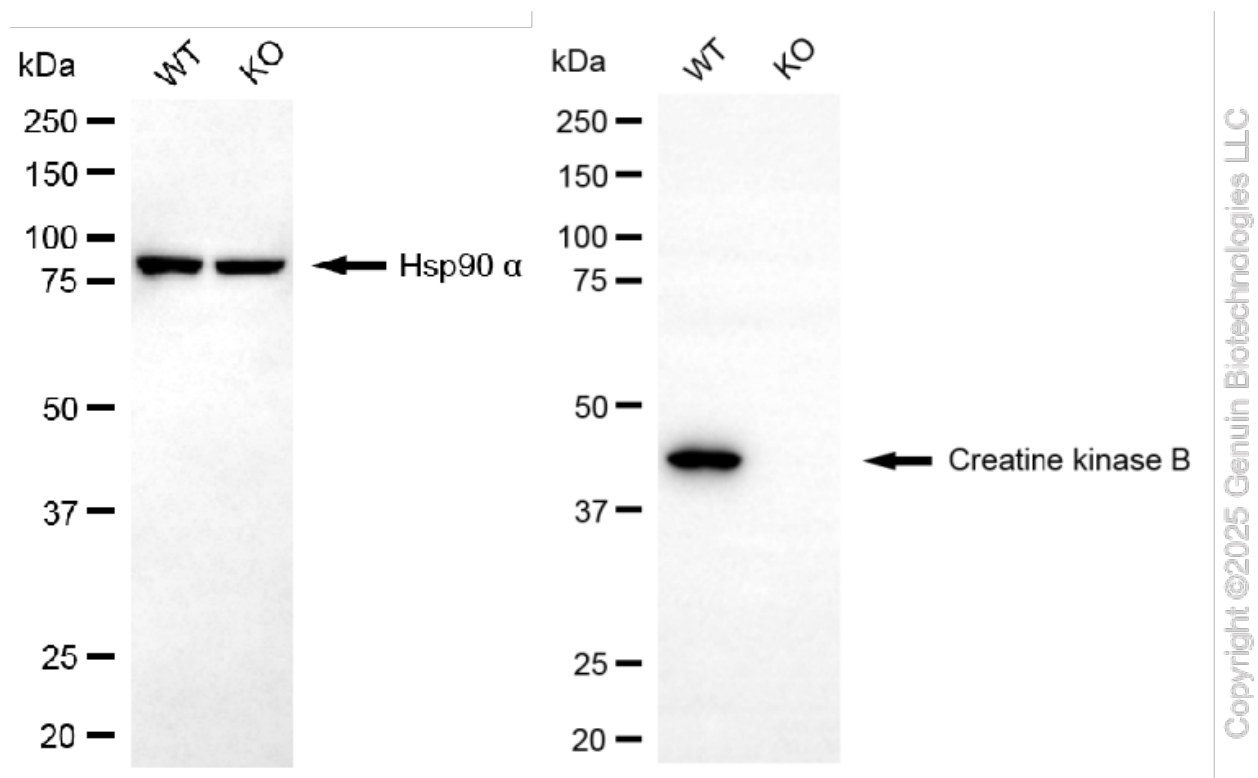
# KO-Validated Anti-Creatine kinase B Recombinant Rabbit Monoclonal Antibody

PAGE 3

and smart gain: Medium. Scale bar, 20  $\mu$ m.



Western blotting analysis using anti-creatine kinase B antibody (Cat#71185). Total cell lysates (30  $\mu$ g) from various cell lines were loaded and separated by SDS-PAGE. The blot was incubated with anti-creatine kinase B antibody (Cat#71185, 1:5,000) and HRP-conjugated goat anti-rabbit secondary antibody (Cat#201, 1:20,000) respectively. Image was developed using NaQ™ ECL Substrate Kit (Cat#716).



## SUPPORT

SUPPORT@GENUINBIOTECH.COM  
TEL: +1-540-855-7041

## ORDERS

SALES@GENUINBIOTECH.COM  
FAX: +1-540-855-7041

WWW.GENUINBIOTECH.COM

## **KO-Validated Anti-Creatine kinase B Recombinant Rabbit Monoclonal Antibody**

PAGE 4

Western blotting analysis using anti-creatine kinase B antibody (Cat#71185). Creatine kinase B expression in wild type (WT) and creatine kinase B (CKB) knockout (KO) 293T cells with 20 µg of total cell lysates. Hsp90 α serves as a loading control. The blot was incubated with anti-creatine kinase B antibody (Cat#71185, 1:5,000) and HRP-conjugated goat anti-rabbit secondary antibody (Cat#201, 1:20,000) respectively. Image was developed using NaQ™ ECL Substrate Kit (Cat#716).

---

### **SUPPORT**

SUPPORT@GENUINBIOTECH.COM  
TEL: +1-540-855-7041

### **ORDERS**

SALES@GENUINBIOTECH.COM  
FAX: +1-540-855-7041

**WWW.GENUINBIOTECH.COM**