

KO-Validated Anti-Tripartite motif containing 28 Recombinant Rabbit Monoclonal Antibody



Catalog #: 71189

Aliases

TRIM28; Tripartite Motif Containing 28; TIF1B; RNF96; KAP-1; KAP1; Transcription Intermediary Factor 1-Beta; RING Finger Protein 96; TIF1-Beta; PPP1R157; TF1B; Protein Phosphatase 1, Regulatory Subunit 157; RING-Type E3 Ubiquitin Transferase TIF1-Beta; E3 SUMO-Protein Ligase TRIM28; KRAB-Interacting Protein 1; KRAB-Associated Protein 1; Nuclear Corepressor KAP-1; TIF1beta ; KRIP-1; KRAB [Kruppel-Associated Box Domain]-Associated Protein 1; Transcriptional Intermediary Factor 1-Beta; Tripartite Motif-Containing Protein 28; Tripartite Motif-Containing 28; EC 2.3.2.27; TIF1-BETA; TIF1BETA

Background

Gene Name: TRIM28

NCBI Gene Entry: [10155](#)

UniProt Entry: [Q13263](#)

Application Information

Molecular Weight: Predicted, 89 kDa; observed, 110 kDa

Clonality: Rabbit monoclonal antibody

Clone ID: 25GB2310

Species Reactivity: Human, mouse, rat

Applications Tested: Western blotting (WB), flow cytometry (FCM), immunocytochemistry (IC)

Immunogen

A synthesized peptide derived from human KAP1

Isotype

Rabbit IgG

Storage Buffer

Supplied in PBS (pH 7.4) containing 50% glycerol, and 0.02% sodium azide.

Storage

Store at -20 °C for one year.

Recommended Dilutions

Western blotting (WB): 1:4,000-1:20,000

Flow Cytometry (FCM): 1:2,000

SUPPORT

SUPPORT@GENUINBIOTECH.COM
TEL: +1-540-855-7041

ORDERS

SALES@GENUINBIOTECH.COM
FAX: +1-540-855-7041

WWW.GENUINBIOTECH.COM

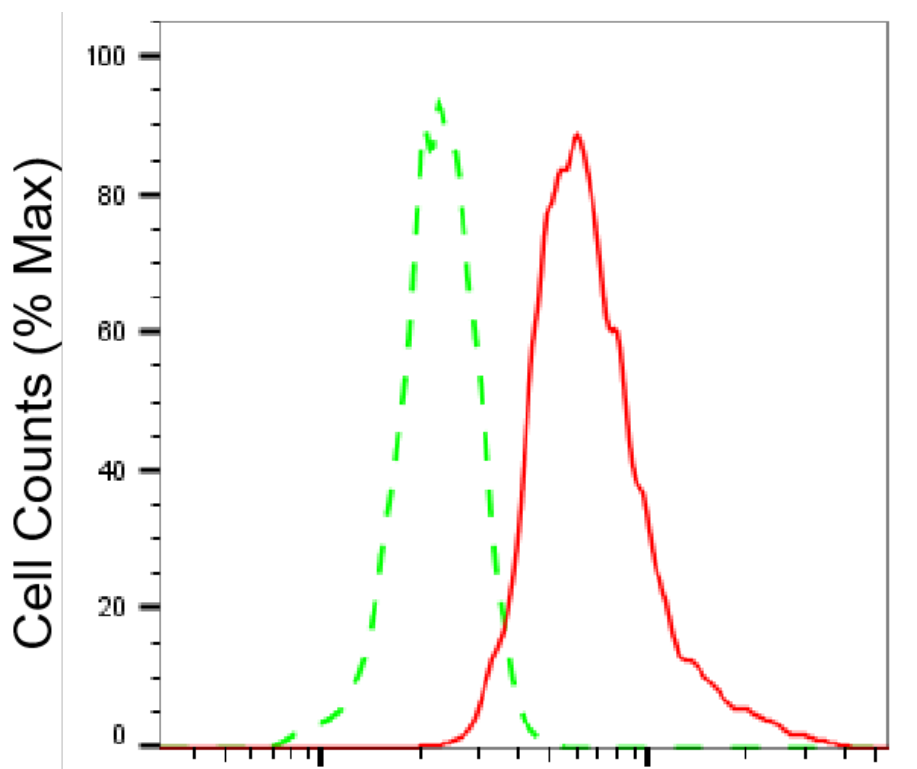
KO-Validated Anti-Tripartite motif containing 28 Recombinant Rabbit Monoclonal Antibody

PAGE 2

Immunocytochemistry (IC): 1:100-1:1,000

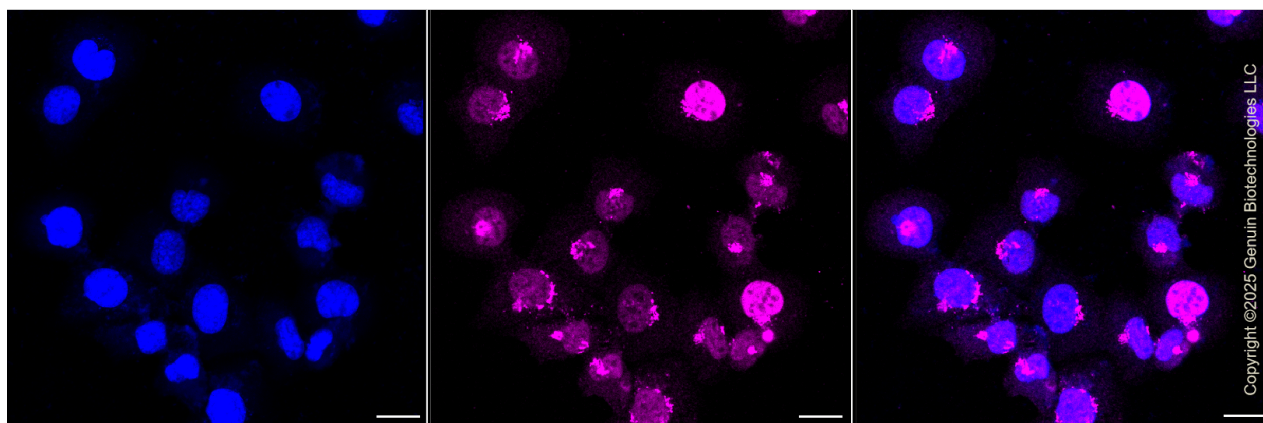
Note: This product is for research use only.

Validation Data



Tripartite motif containing 28-Alexa Fluor® 647

Flow cytometric analysis of Tripartite motif containing 28 expression in HT-1080 cells using Tripartite motif containing 28 antibody (Cat#71189, 1:2,000). Green, isotype control; red, Tripartite motif containing 28.



SUPPORT

SUPPORT@GENUINBIOTECH.COM
TEL: +1-540-855-7041

ORDERS

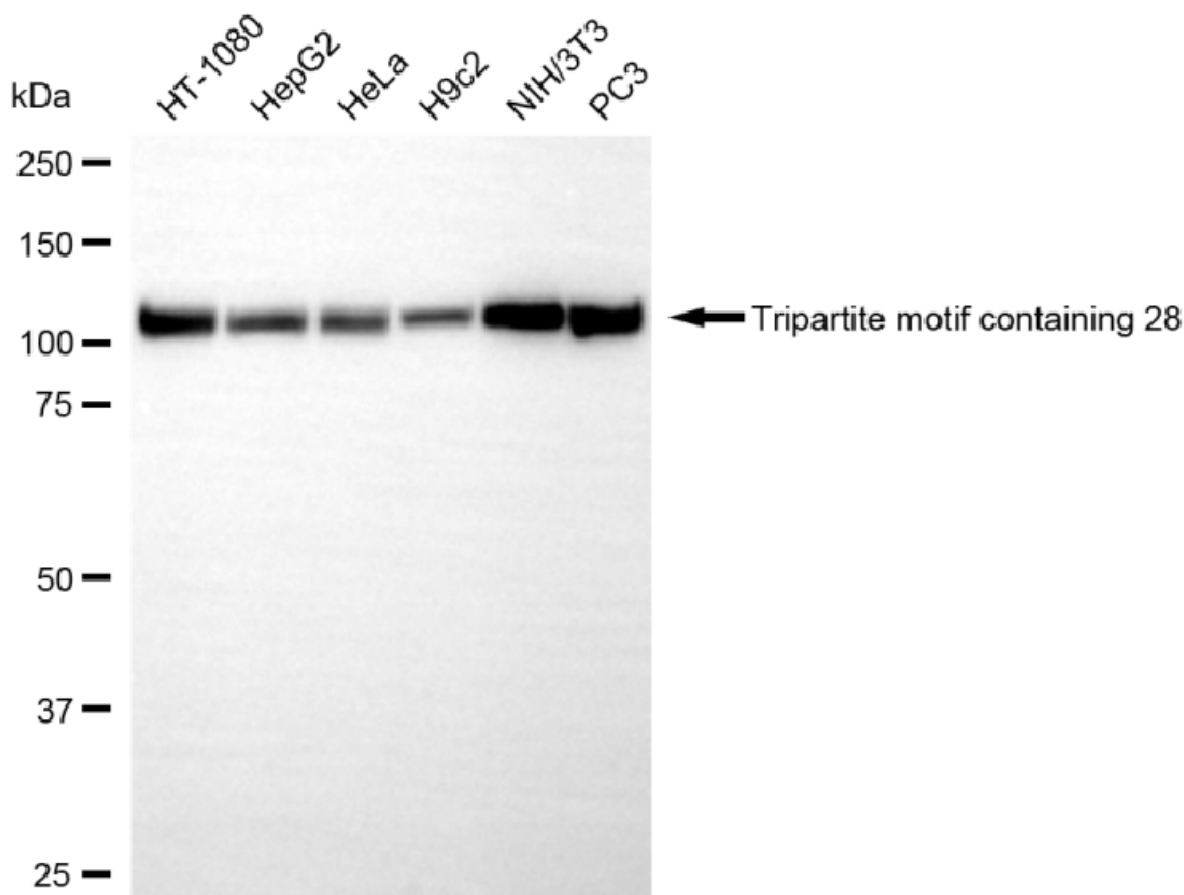
SALES@GENUINBIOTECH.COM
FAX: +1-540-855-7041

WWW.GENUINBIOTECH.COM

KO-Validated Anti-Tripartite motif containing 28 Recombinant Rabbit Monoclonal Antibody

PAGE 3

Immunocytochemical staining of HT-1080 cells with Tripartite motif containing 28 antibody (Cat#71189, 1:1,000). Nuclei were stained blue with DAPI; Tripartite motif containing 28 was stained magenta with Alexa Fluor® 647. Images were taken using Leica stellaris 5. Protein abundance based on laser Intensity and smart gain: Medium. Scale bar, 20 μ m.



Copyright ©2025 Genuin Biotechnologies LLC

Western blotting analysis using anti-tripartite motif containing 28 antibody (Cat#71189). Total cell lysates (30 μ g) from various cell lines were loaded and separated by SDS-PAGE. The blot was incubated with anti-tripartite motif containing 28 antibody (Cat#71189, 1:20,000) and HRP-conjugated goat anti-rabbit secondary antibody (Cat#201, 1:20,000) respectively. Image was developed using NaQ™ ECL Substrate Kit (Cat#716).

SUPPORT

SUPPORT@GENUINBIOTECH.COM
TEL: +1-540-855-7041

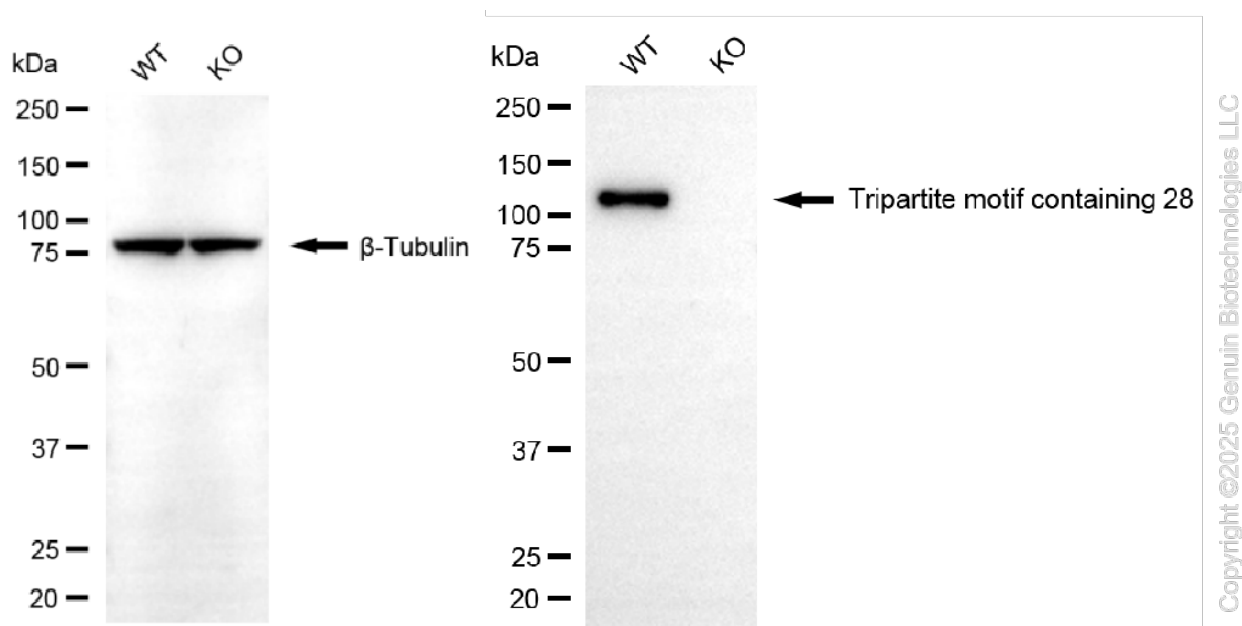
ORDERS

SALES@GENUINBIOTECH.COM
FAX: +1-540-855-7041

WWW.GENUINBIOTECH.COM

KO-Validated Anti-Tripartite motif containing 28 Recombinant Rabbit Monoclonal Antibody

PAGE 4



Western blotting analysis using anti-tripartite motif containing 28 antibody (Cat#71189). Tripartite motif containing 28 expression in wild type (WT) and tripartite motif containing 28 (TRIM28) knockout (KO) HSHC cells with 20 μ g of total cell lysates. β -Tubulin serves as a loading control. The blot was incubated with anti-tripartite motif containing 28 antibody (Cat#71189, 1:20,000) and HRP-conjugated goat anti-rabbit secondary antibody (Cat#201, 1:20,000) respectively. Image was developed using NaQTM ECL Substrate Kit (Cat#716).

SUPPORT

SUPPORT@GENUINBIOTECH.COM
TEL: +1-540-855-7041

ORDERS

SALES@GENUINBIOTECH.COM
FAX: +1-540-855-7041

WWW.GENUINBIOTECH.COM