

KO-Validated Anti-Ezrin Recombinant Rabbit Monoclonal Antibody



Catalog #: 71193

Aliases

EZR; Ezrin; VIL2; Villin 2 (Ezrin); Cytovillin 2; P81; Epididymis Secretory Protein Li 105; Cytovillin; HEL-S-105; Villin-2; CVIL; CVL

Background

Gene Name: EZR

NCBI Gene Entry: [7430](#)

UniProt Entry: [P15311](#)

Application Information

Molecular Weight: Predicted, 69 kDa; observed, 72 kDa

Clonality: Rabbit monoclonal antibody

Clone ID: 25GB2410

Species Reactivity: Human

Applications Tested: Western blotting (WB), flow cytometry (FCM), immunocytochemistry (IC)

Immunogen

A synthesized peptide derived from human Ezrin

Isotype

Rabbit IgG

Storage Buffer

Supplied in PBS (pH 7.4) containing 50% glycerol, and 0.02% sodium azide.

Storage

Store at -20 °C for one year.

Recommended Dilutions

Western blotting (WB): 1:1,000-1:5,000

Flow Cytometry (FCM): 1:2,000

Immunocytochemistry (IC): 1:100-1:1,000

Note: This product is for research use only.

Validation Data

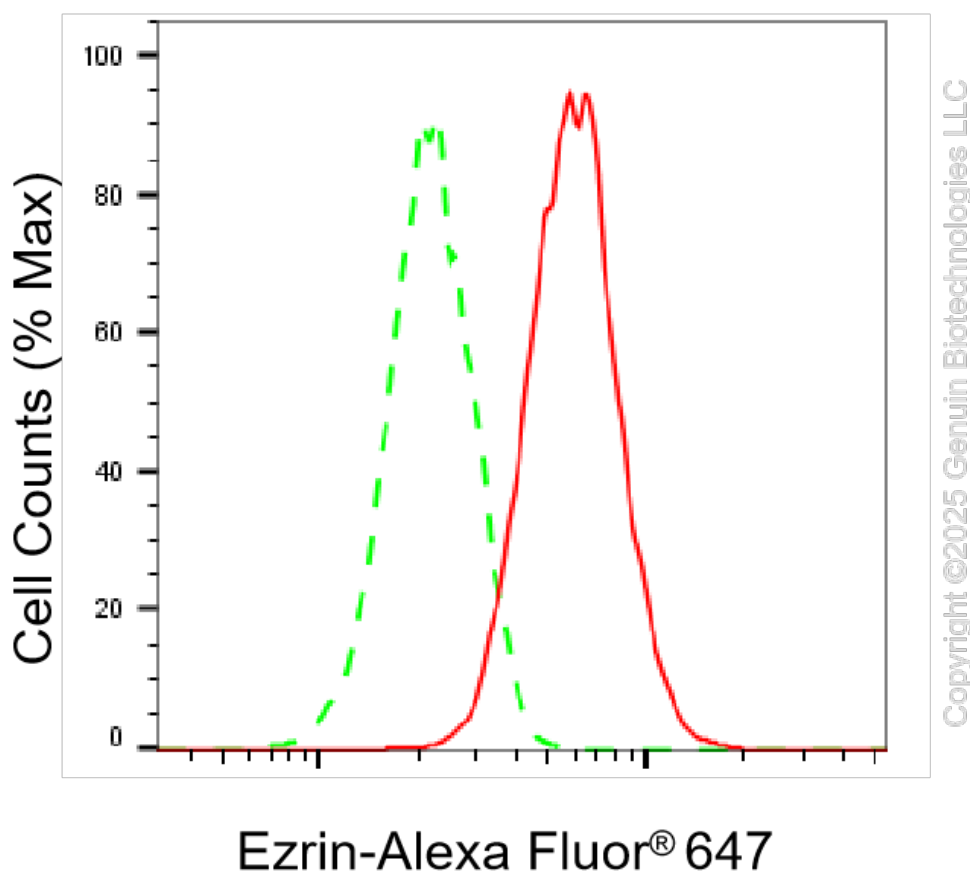
SUPPORT

SUPPORT@GENUINBIOTECH.COM
TEL: +1-540-855-7041

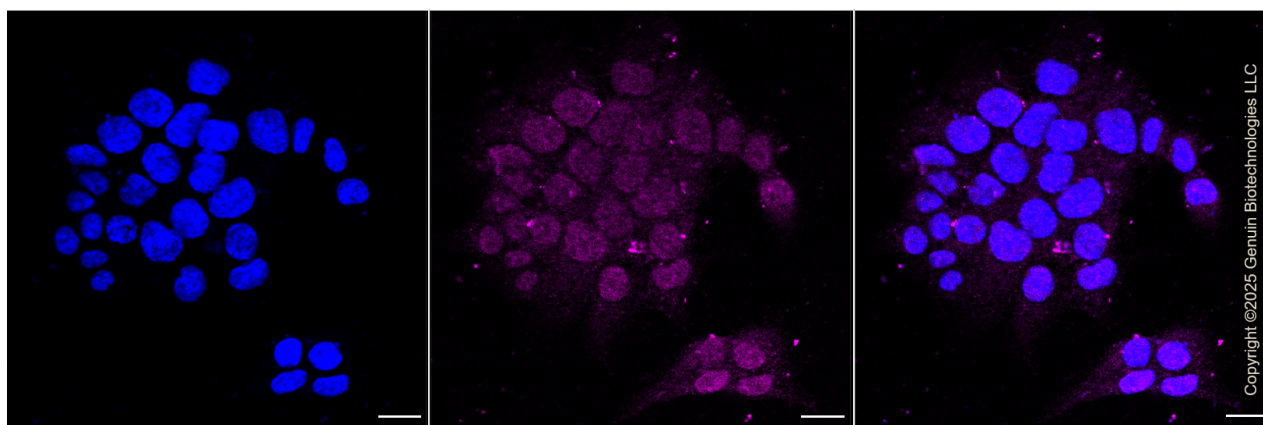
ORDERS

SALES@GENUINBIOTECH.COM
FAX: +1-540-855-7041

WWW.GENUINBIOTECH.COM



Flow cytometric analysis of Ezrin expression in HAP-1 cells using Ezrin antibody (Cat#71193, 1:2,000). Green, isotype control; red, Ezrin.



Immunocytochemical staining of HAP-1 cells with anti-Ezrin antibody (Cat#71193, 1:1,000). Nuclei were stained blue with DAPI; Ezrin was stained magenta with Alexa Fluor® 647. Images were taken using Leica stellaris 5. Protein abundance based on laser Intensity and smart gain: Medium. Scale bar, 20 µm.

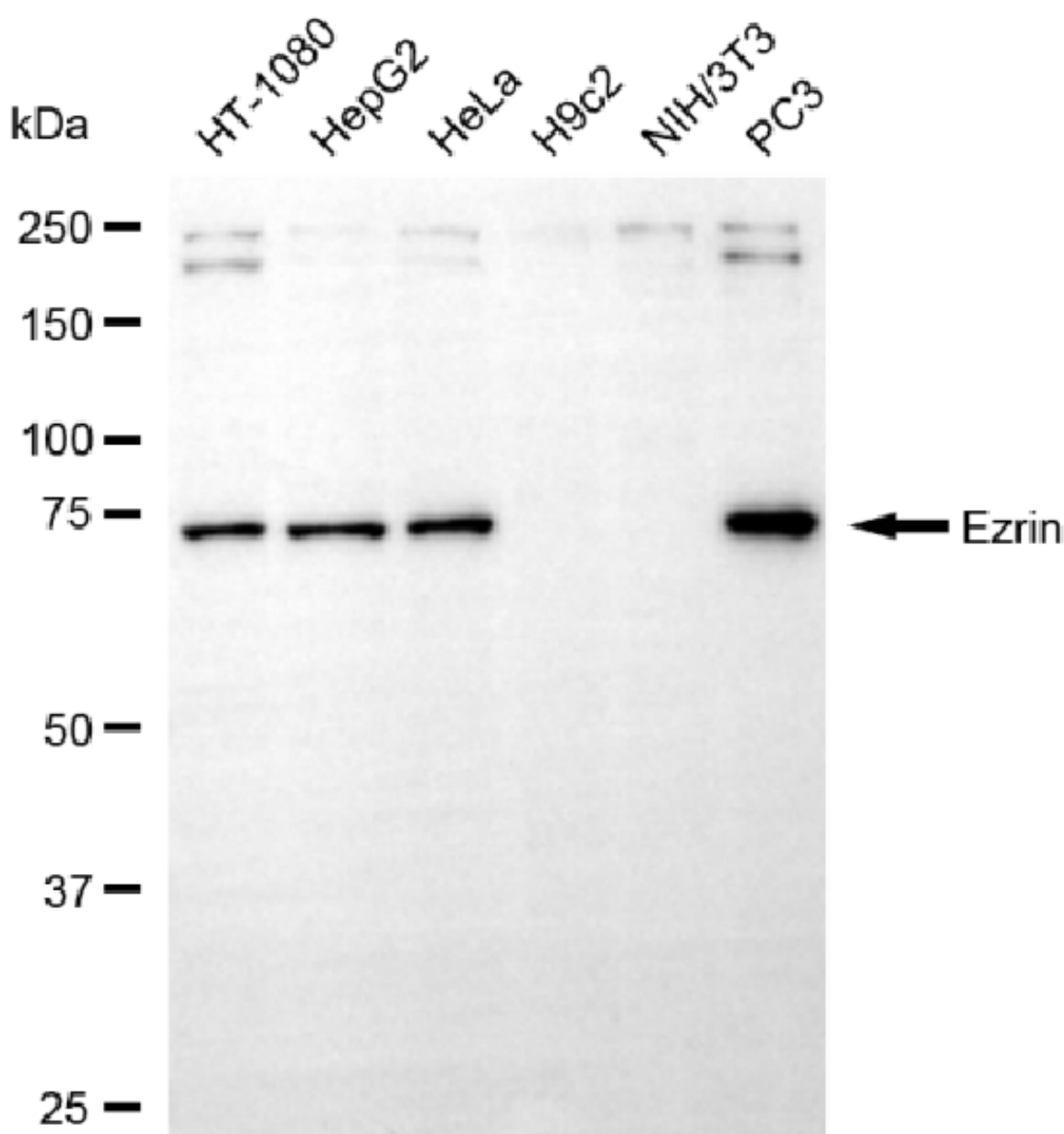
SUPPORT

SUPPORT@GENUINBIOTECH.COM
TEL: +1-540-855-7041

ORDERS

SALES@GENUINBIOTECH.COM
FAX: +1-540-855-7041

WWW.GENUINBIOTECH.COM

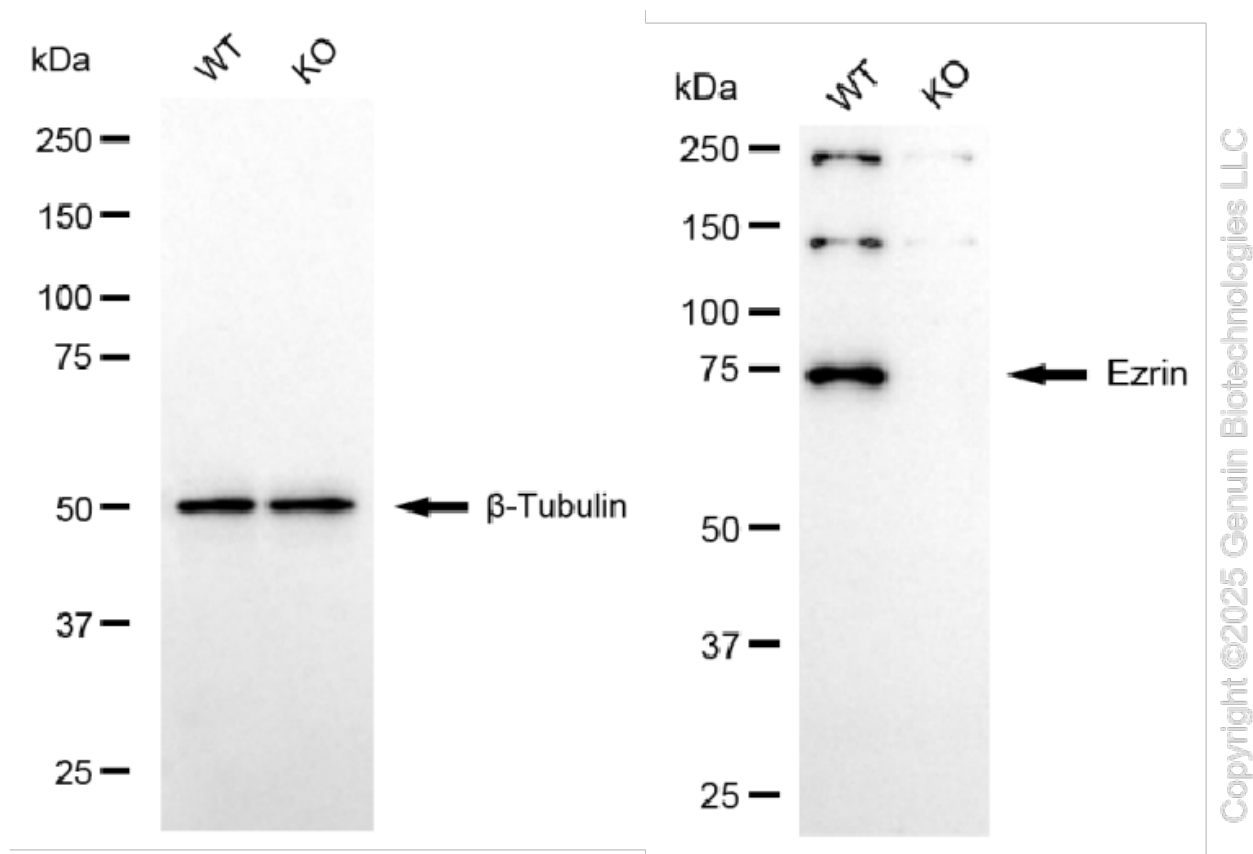


Copyright ©2025 Genuin Biotechnologies LLC

Western blotting analysis using anti-ezrin antibody (Cat#71193). Total cell lysates (30 µg) from various cell lines were loaded and separated by SDS-PAGE. The blot was incubated with anti-ezrin antibody (Cat#71193, 1:5,000) and HRP-conjugated goat anti-rabbit secondary antibody (Cat#201, 1:20,000) respectively. Image was developed using NaQ™ ECL Substrate Kit (Cat#716).

KO-Validated Anti-Ezrin Recombinant Rabbit Monoclonal Antibody

PAGE 4



Western blotting analysis using anti-ezrin antibody (Cat#71193). Ezrin expression in wild-type (WT) and ezrin (EZR) knockout (KO) HeLa cells with 20 μ g of total cell lysates. β -Tubulin serves as a loading control. The blot was incubated with anti-ezrin antibody (Cat#71193, 1:5,000) and HRP-conjugated goat anti-rabbit secondary antibody (Cat#201, 1:20,000) respectively. Image was developed using NaQTM ECL Substrate Kit (Cat#716).

SUPPORT

SUPPORT@GENUINBIOTECH.COM
TEL: +1-540-855-7041

ORDERS

SALES@GENUINBIOTECH.COM
FAX: +1-540-855-7041

WWW.GENUINBIOTECH.COM