

KO-Validated Anti-Phospho-Histone H2A.X (S139) Recombinant Rabbit Monoclonal



Catalog #: 71197

Aliases

H2AX; H2A.X Variant Histone; H2AFX; H2A Histone Family Member X; Histone H2A.X; Histone H2AX; H2A Histone Family, Member X; H2AX Histone; H2A.X; H2A/X; H2a/X

Background

NCBI Gene Entry: [3014](#)

UniProt Entry: [P16104](#)

Application Information

Molecular Weight: Predicted, 15 kDa; observed, 15 kDa

Clonality: Rabbit monoclonal antibody

Clone ID: 25GB2500

Species Reactivity: Human, mouse, rat

Applications Tested: Western blotting (WB), flow cytometry (FCM), immunocytochemistry (IC)

Immunogen

A synthesized peptide derived from human Phospho-Histone H2A.X (S139)

Isotype

Rabbit IgG

Storage Buffer

Supplied in PBS (pH 7.4) containing 50% glycerol, and 0.02% sodium azide.

Storage

Store at -20 °C for one year.

Recommended Dilutions

Western Blotting (WB): 1:2,000-1:10,000

Flow Cytometry (FCM): 1:200-1:2,000

Immunocytochemistry (IC): 1:100-1:1,000

Note: This product is for research use only.

Validation Data

SUPPORT

SUPPORT@GENUINBIOTECH.COM
TEL: +1-540-855-7041

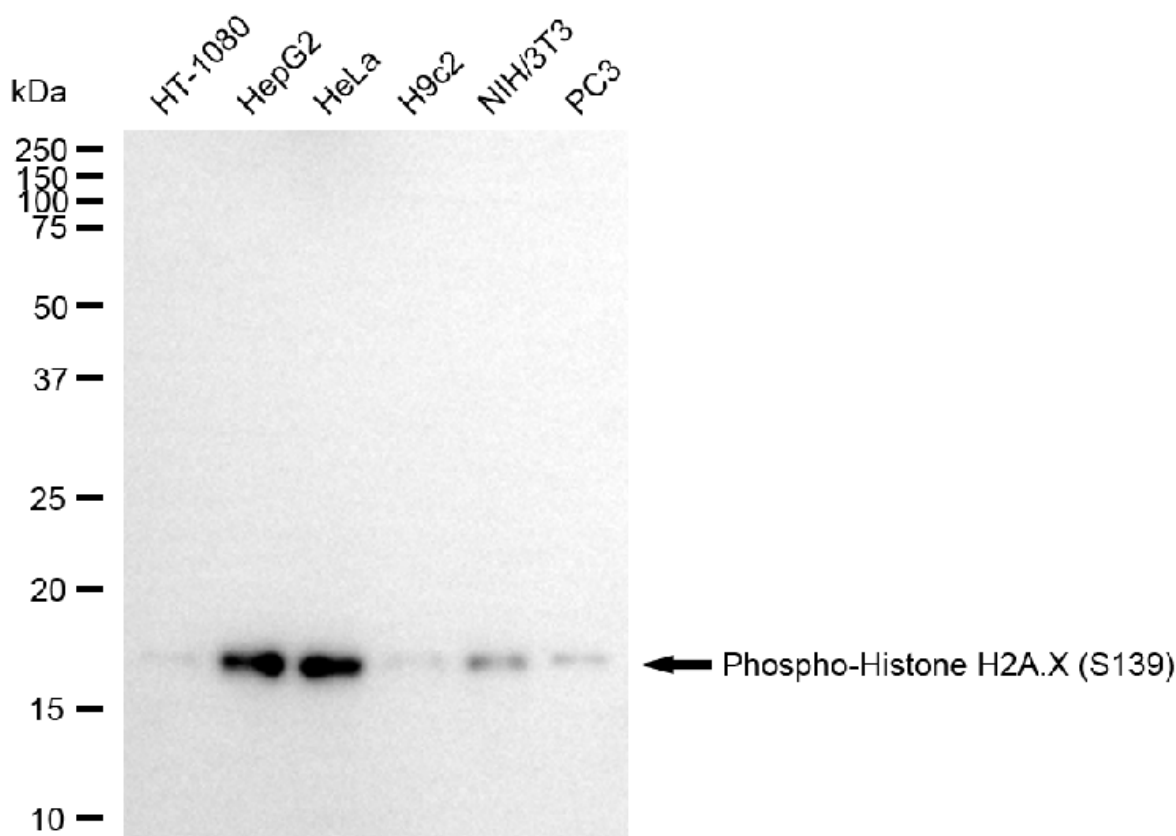
ORDERS

SALES@GENUINBIOTECH.COM
FAX: +1-540-855-7041

WWW.GENUINBIOTECH.COM

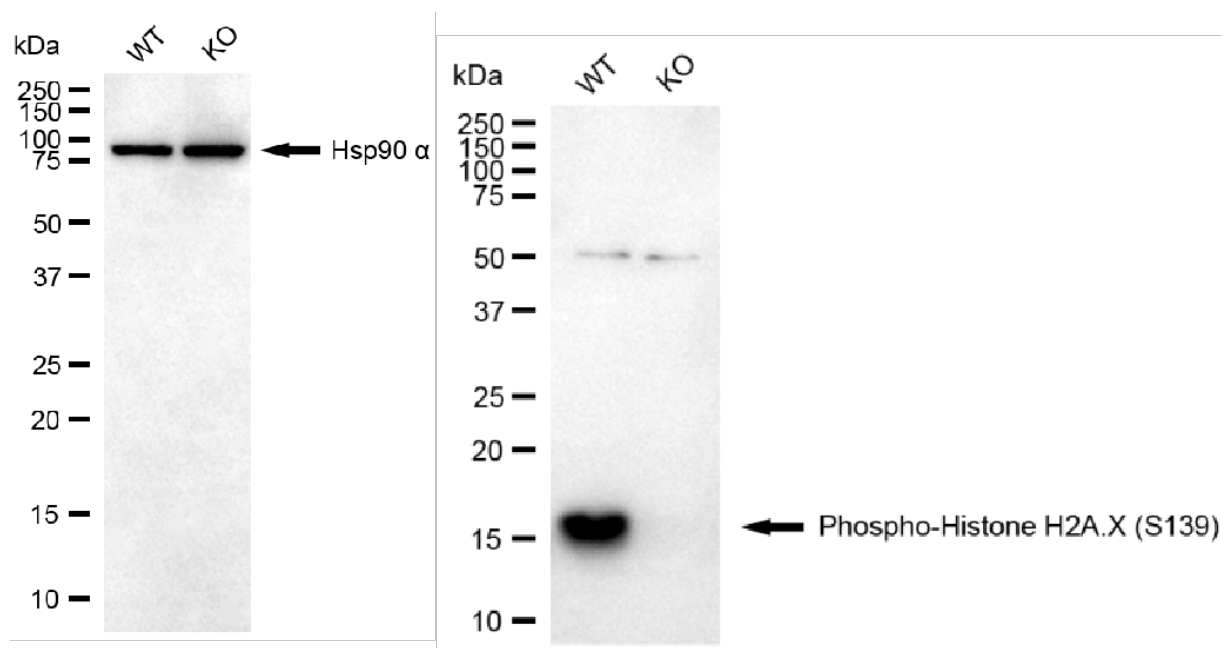
KO-Validated Anti-Phospho-Histone H2A.X (S139) Recombinant Rabbit Monoclonal

PAGE 2



Copyright ©2025 Genuin Biotechnologies LLC

Western blotting analysis using anti-phospho-Histone H2A.X (S139) antibody (Cat#71197). Total cell lysates (30 µg) from various cell lines were loaded and separated by SDS-PAGE. The blot was incubated with anti-phospho-Histone H2A.X (S139) antibody (Cat#71197, 1:10,000) and HRP-conjugated goat anti-rabbit secondary antibody (Cat#201, 1:20,000) respectively. Image was developed using FeQ™ ECL Substrate Kit (Cat#226).



Copyright ©2025 Genuin Biotechnologies LLC

SUPPORT

SUPPORT@GENUINBIOTECH.COM
TEL: +1-540-855-7041

ORDERS

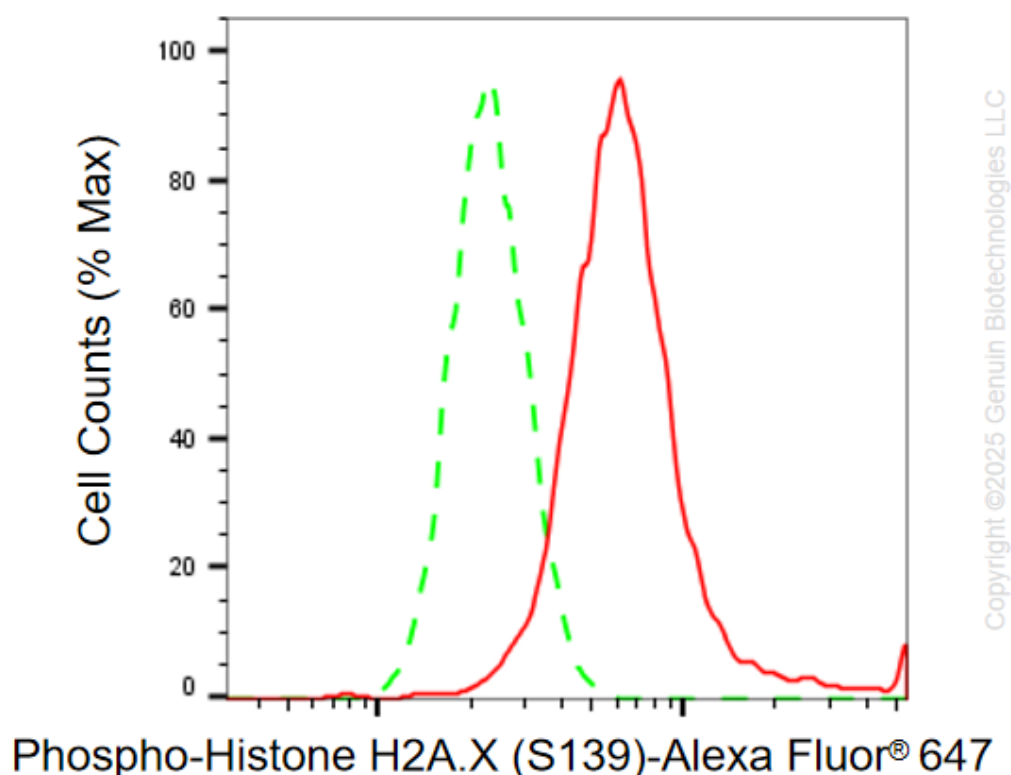
SALES@GENUINBIOTECH.COM
FAX: +1-540-855-7041

WWW.GENUINBIOTECH.COM

KO-Validated Anti-Phospho-Histone H2A.X (S139) Recombinant Rabbit Monoclonal

PAGE 3

Western blotting analysis using anti-phospho-Histone H2A.X (S139) antibody (Cat#71197). Phospho-Histone H2A.X (S139) expression in wild-type (WT) and H2AX knockout (KO) HSHC cells with 20 µg of total cell lysates. Hsp90 α serves as a loading control. The blot was incubated with anti-phospho-Histone H2A.X (S139) antibody (Cat#71197, 1:10,000) and HRP-conjugated goat anti-rabbit secondary antibody (Cat#201, 1:20,000) respectively. Image was developed using FeQ™ ECL Substrate Kit (Cat#226).



Flow cytometric analysis of Phospho-Histone H2A.X (S139) expression in HepG2 cells using Phospho-Histone H2A.X (S139) antibody (Cat#71197, 1:2000). Green, isotype control; red, Phospho-Histone H2A.X (S139).

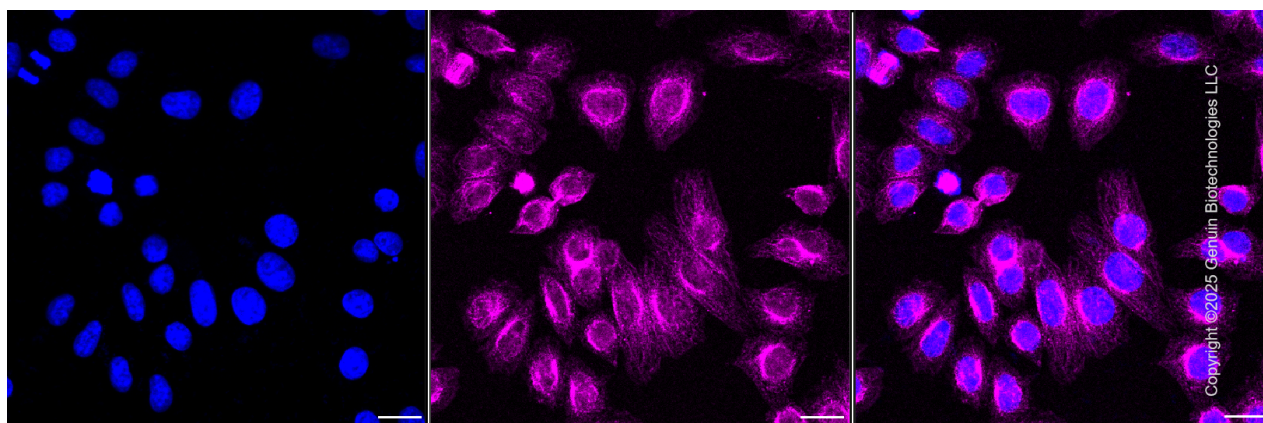
SUPPORT

SUPPORT@GENUINBIOTECH.COM
TEL: +1-540-855-7041

ORDERS

SALES@GENUINBIOTECH.COM
FAX: +1-540-855-7041

WWW.GENUINBIOTECH.COM



Immunocytochemical staining of HepG2 cells with anti-Phospho-Histone H2A.X (S139) antibody (Cat#71197, 1:1000) . Nuclei were stained blue with DAPI; Phospho-Histone H2A.X (S139) was stained magenta with Alexa Fluor® 647. Images were taken using Leica stellaris 5. Protein abundance based on laser Intensity and smart gain: Medium. Scale bar, 20 µm.