

# KO-Validated Anti-Phospho-MSK1 (S376) Recombinant Rabbit Monoclonal Antibody



**Catalog #: 71200**

## Aliases

RPS6KA5; Ribosomal Protein S6 Kinase A5; MSK1; RLPK; Nuclear Mitogen- And Stress-Activated Protein Kinase 1; 90 KDa Ribosomal Protein S6 Kinase 5; Ribosomal Protein S6 Kinase Alpha-5; RSK-Like Protein Kinase; S6K-Alpha-5; EC 2.7.11.1; RSKL; Ribosomal Protein S6 Kinase, 90kDa, Polypeptide 5; Ribosomal Protein S6 Kinase, 90kD, Polypeptide 5; EC 2.7.11; MSPK1

## Background

Gene Name: RPS6KA5

NCBI Gene Entry: [9252](#)

UniProt Entry: [O75582](#)

## Application Information

Molecular Weight: Predicted, 90 kDa; observed, 90 kDa

Clonality: Rabbit monoclonal antibody

Clone ID: 25GB2625

Species Reactivity: Human, mouse, rat

Applications Tested: Western blotting (WB), flow cytometry (FCM), immunocytochemistry (IC)

## Immunogen

A synthesized peptide derived from human Phospho-MSK1 (S376)

## Isotype

Rabbit IgG

## Storage Buffer

Supplied in PBS (pH 7.4) containing 50% glycerol, and 0.02% sodium azide.

## Storage

Store at -20 °C for one year.

## Recommended Dilutions

Western Blotting (WB): 1:1,000-1:5,000

Flow Cytometry (FCM): 1:2,000

Immunocytochemistry (IC): 1:100-1:1,000

---

### SUPPORT

SUPPORT@GENUINBIOTECH.COM  
TEL: +1-540-855-7041

### ORDERS

SALES@GENUINBIOTECH.COM  
FAX: +1-540-855-7041

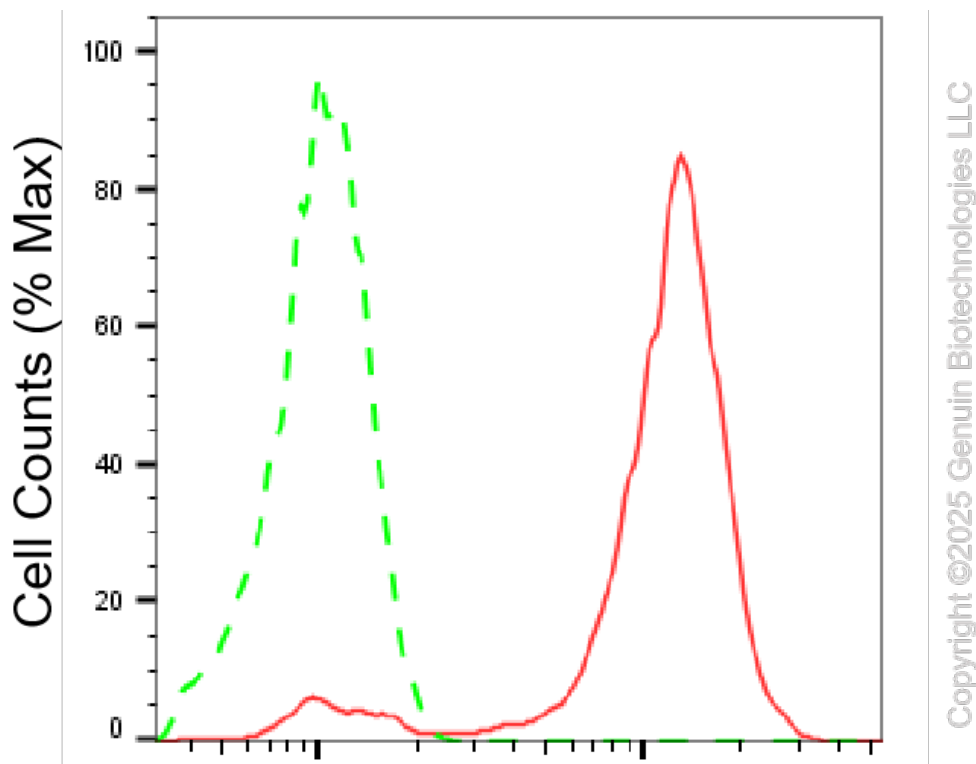
[WWW.GENUINBIOTECH.COM](http://WWW.GENUINBIOTECH.COM)

## KO-Validated Anti-Phospho-MSK1 (S376) Recombinant Rabbit Monoclonal Antibody

PAGE 2

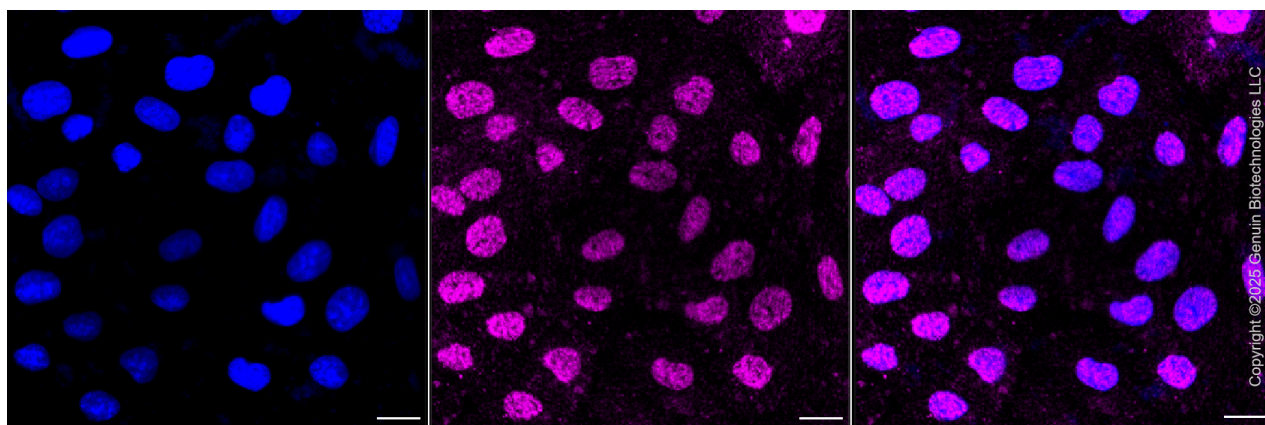
**Note:** This product is for research use only.

### Validation Data



### Phospho-MSK1 (S376)-Alexa Fluor® 647

Flow cytometric analysis of Phospho-MSK1 (S376) expression in H9c2 cells using anti-Phospho-MSK1 (S376) antibody (Cat#71200, 1:2,000). Green, isotype control; red, Phospho-MSK1 (S376).



Immunocytochemical staining of H9c2 cells with anti-Phospho-MSK1 (S376) antibody (Cat#71200, 1:1,000). Nuclei were stained blue with DAPI; Phospho-MSK1 (S376) was stained magenta with Alexa Fluor® 647. Images were taken using Leica stellaris 5. Protein abundance

#### SUPPORT

SUPPORT@GENUINBIOTECH.COM  
TEL: +1-540-855-7041

#### ORDERS

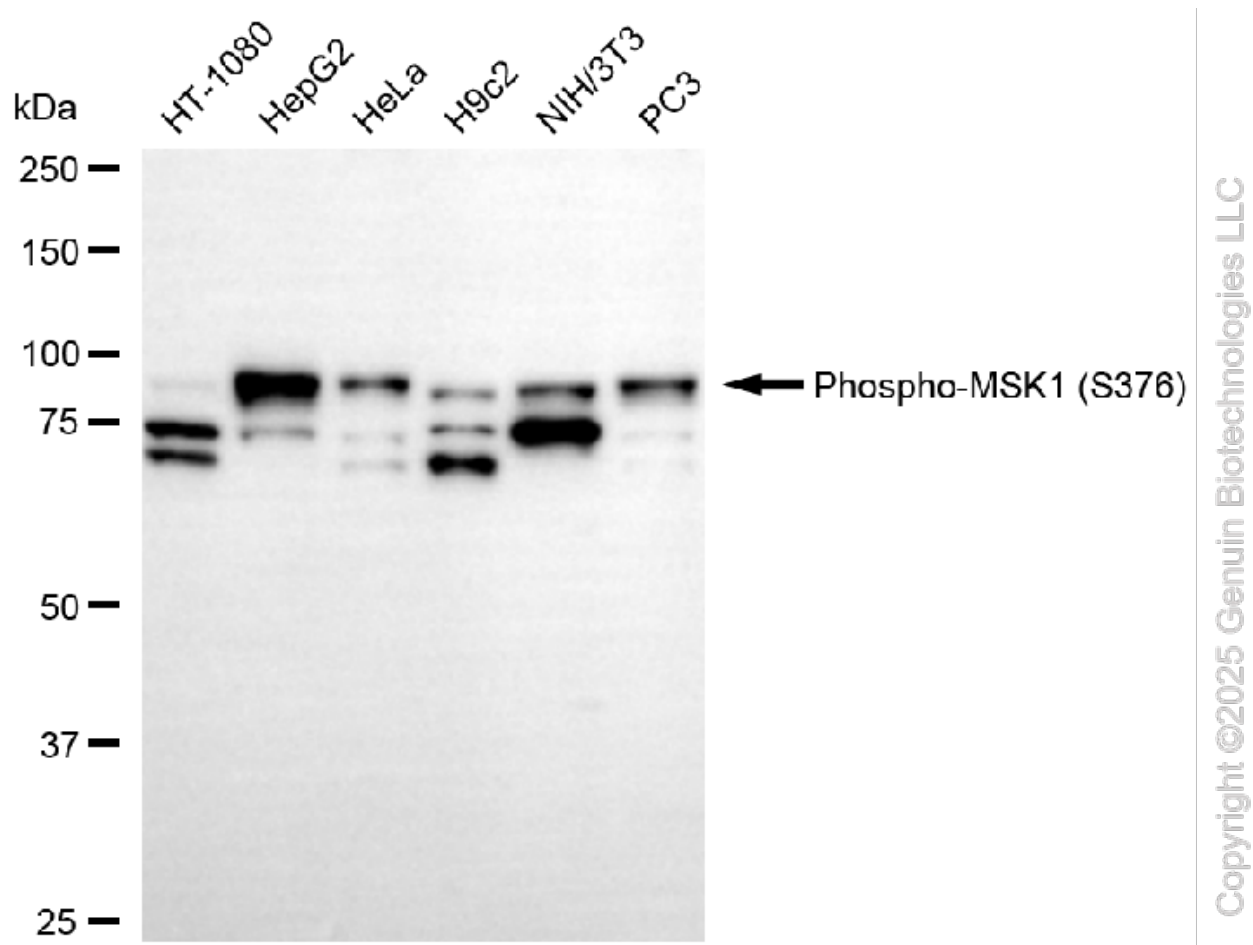
SALES@GENUINBIOTECH.COM  
FAX: +1-540-855-7041

[WWW.GENUINBIOTECH.COM](http://WWW.GENUINBIOTECH.COM)

## KO-Validated Anti-Phospho-MSK1 (S376) Recombinant Rabbit Monoclonal Antibody

PAGE 3

based on laser Intensity and smart gain: Low. Scale bar, 20  $\mu$ m.



Western blotting analysis using anti-phospho-MSK1 (S376) antibody (Cat#71200). Total cell lysates (30  $\mu$ g) from various cell lines were loaded and separated by SDS-PAGE. The blot was incubated with anti-phospho-MSK1 (S376) antibody (Cat#71200, 1:5,000) and HRP-conjugated goat anti-rabbit secondary antibody (Cat#201, 1:20,000) respectively. Image was developed using NaQ™ ECL Substrate Kit (Cat#716).

### SUPPORT

SUPPORT@GENUINBIOTECH.COM  
TEL: +1-540-855-7041

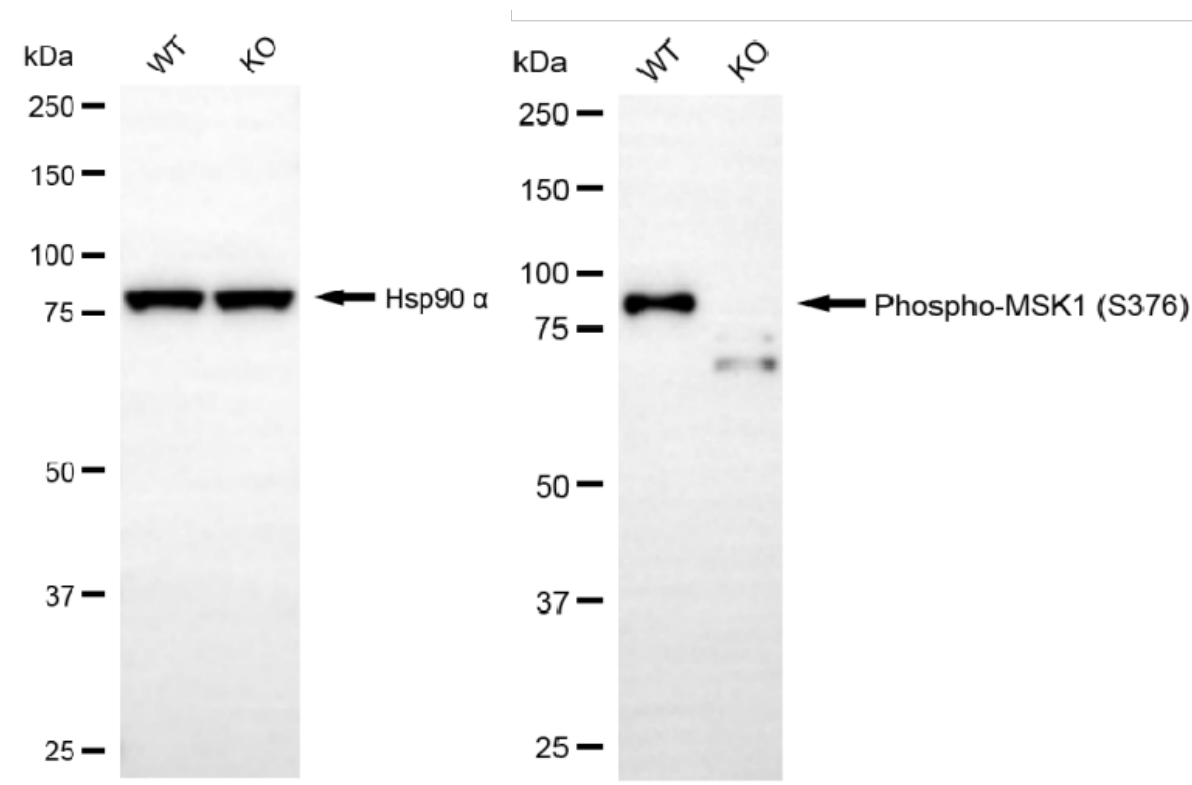
### ORDERS

SALES@GENUINBIOTECH.COM  
FAX: +1-540-855-7041

WWW.GENUINBIOTECH.COM

## KO-Validated Anti-Phospho-MSK1 (S376) Recombinant Rabbit Monoclonal Antibody

PAGE 4



Copyright ©2025 Genuin Biotechnologies LLC

Western blotting analysis using anti-phospho-MSK1 (S376) antibody (Cat#71200). Phospho-MSK1 (S376) expression in wild-type (WT) and RPS6KA5 knockout (KO) HeLa cells with 20 µg of total cell lysates. Hsp90 α serves as a loading control. The blot was incubated with anti-phospho-MSK1 (S376) antibody (Cat#71200, 1:5,000) and HRP-conjugated goat anti-rabbit secondary antibody (Cat#201, 1:20,000) respectively. Image was developed using NaQ™ ECL Substrate Kit (Cat#716).

### SUPPORT

SUPPORT@GENUINBIOTECH.COM  
TEL: +1-540-855-7041

### ORDERS

SALES@GENUINBIOTECH.COM  
FAX: +1-540-855-7041

[WWW.GENUINBIOTECH.COM](http://WWW.GENUINBIOTECH.COM)