

# KO-Validated Anti-Progesterone Receptor Recombinant Rabbit Monoclonal Antibody



**Catalog #: 71202**

## Aliases

PGR; Progesterone Receptor; NR3C3; PR; Nuclear Receptor Subfamily 3 Group C Member 3

## Background

Gene Name: PGR

NCBI Gene Entry: [5241](#)

UniProt Entry: [P06401](#)

## Application Information

Molecular Weight: Predicted, 99 kDa; observed, 120 kDa

Clonality: Rabbit monoclonal antibody

Clone ID: 25GB2650

Species Reactivity: Human

Applications Tested: Western blotting (WB), immunocytochemistry (IC)

## Immunogen

A synthesized peptide derived from human Progesterone Receptor

## Isotype

Rabbit IgG

## Storage Buffer

Supplied in PBS (pH 7.4) containing 50% glycerol, and 0.02% sodium azide.

## Storage

Store at -20 °C for one year.

## Recommended Dilutions

Western Blotting (WB): 1:1,000-1:5,000

Immunocytochemistry (IC): 1:100-1:1,000

**Note:** This product is for research use only.

## Validation Data

---

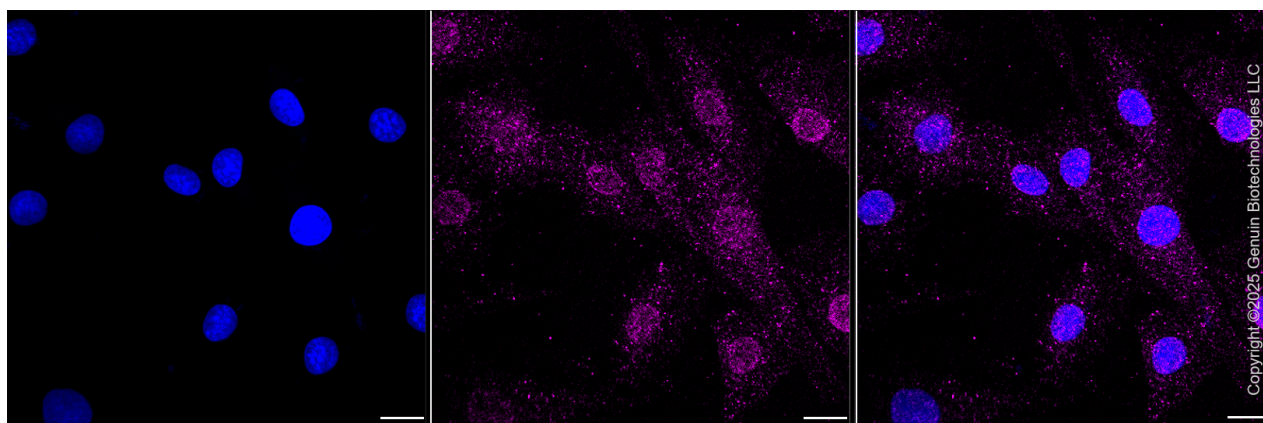
### SUPPORT

SUPPORT@GENUINBIOTECH.COM  
TEL: +1-540-855-7041

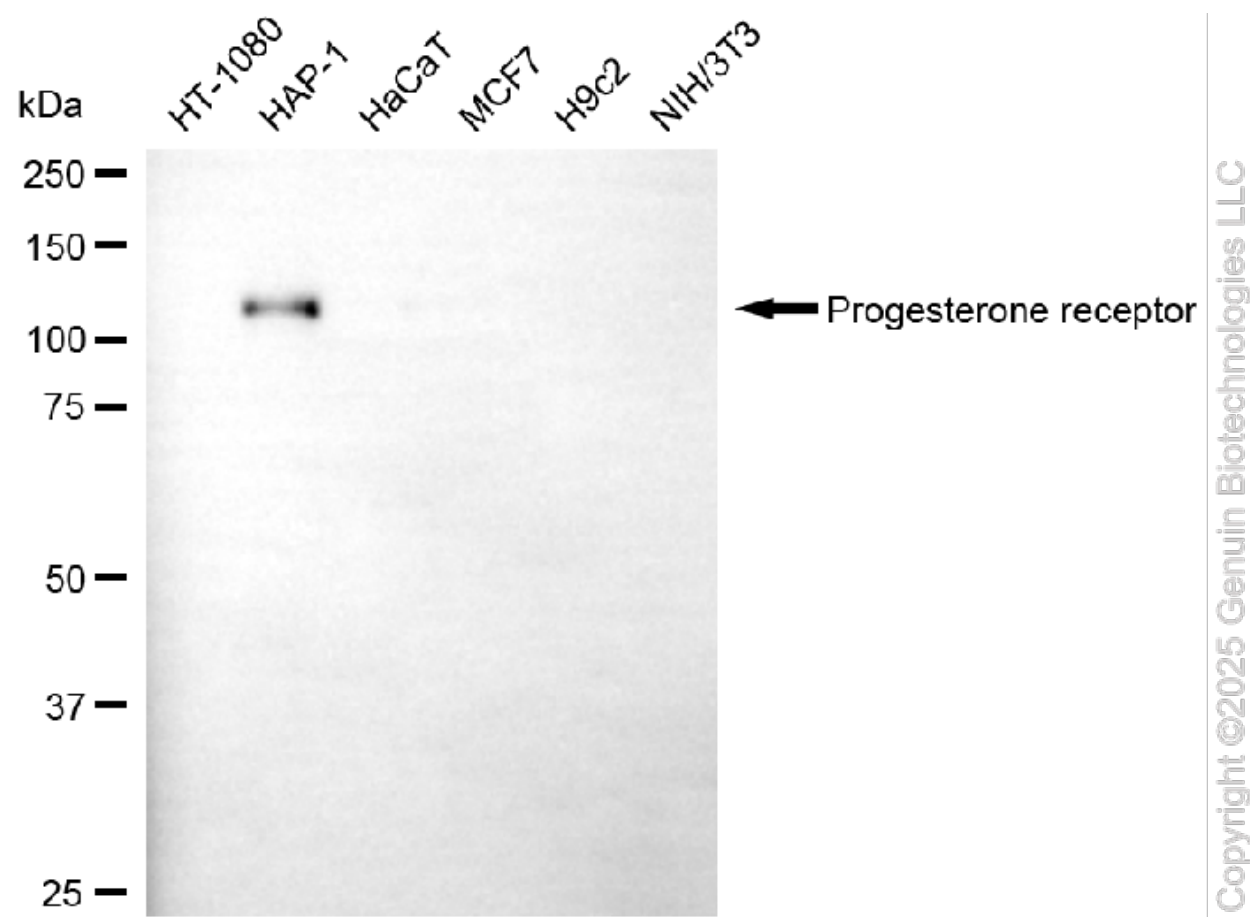
### ORDERS

SALES@GENUINBIOTECH.COM  
FAX: +1-540-855-7041

[WWW.GENUINBIOTECH.COM](http://WWW.GENUINBIOTECH.COM)



Immunocytochemical staining of H9C2 cells with anti-Progesterone receptor antibody (Cat#71202, 1:1,000). Nuclei were stained blue with DAPI; Progesterone receptor was stained magenta with Alexa Fluor® 647. Images were taken using Leica stellaris 5. Protein abundance based on laser Intensity and smart gain: Medium. Scale bar, 20 µm.



Western blotting analysis using anti-progesterone receptor antibody (Cat#71202). Total cell lysates (30 µg) from various cell lines were loaded and separated by SDS-PAGE. The blot was incubated with anti-progesterone receptor antibody (Cat#71202, 1:5,000) and HRP-conjugated goat anti-rabbit secondary antibody (Cat#201, 1:20,000) respectively. Image was developed using FeQ™

## SUPPORT

SUPPORT@GENUINBIOTECH.COM  
TEL: +1-540-855-7041

## ORDERS

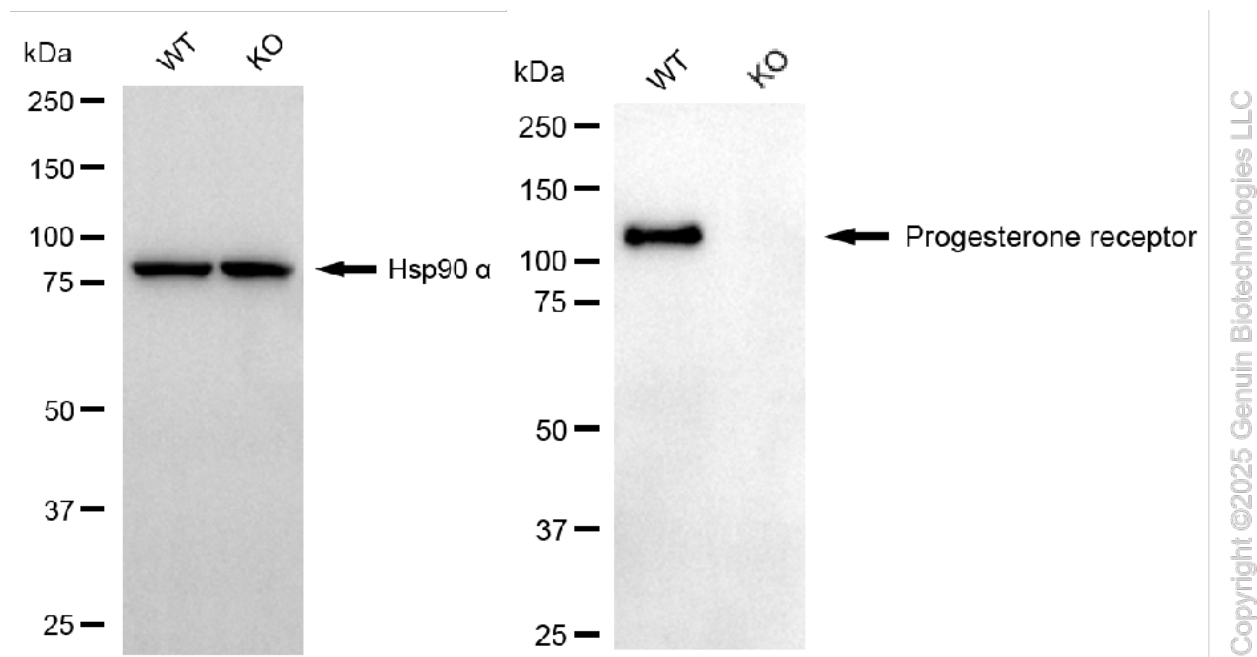
SALES@GENUINBIOTECH.COM  
FAX: +1-540-855-7041

[WWW.GENUINBIOTECH.COM](http://WWW.GENUINBIOTECH.COM)

## KO-Validated Anti-Progesterone Receptor Recombinant Rabbit Monoclonal Antibody

PAGE 3

ECL Substrate Kit (Cat#226).



Western blotting analysis using anti-progesterone receptor antibody (Cat#71202). Progesterone receptor expression in wild type (WT) and progesterone receptor (PGR) knockout (KO) HSHC cells with 50  $\mu$ g of total cell lysates. Hsp90  $\alpha$  serves as a loading control. The blot was incubated with anti-progesterone receptor antibody (Cat#71202, 1:5,000) and HRP-conjugated goat anti-rabbit secondary antibody (Cat#201, 1:20,000) respectively. Image was developed using FeQTM ECL Substrate Kit (Cat#226).

### SUPPORT

SUPPORT@GENUINBIOTECH.COM  
TEL: +1-540-855-7041

### ORDERS

SALES@GENUINBIOTECH.COM  
FAX: +1-540-855-7041

[WWW.GENUINBIOTECH.COM](http://WWW.GENUINBIOTECH.COM)