

KO-Validated Anti-SRSF6 Recombinant Rabbit Monoclonal Antibody



Catalog #: 71206

Aliases

SRSF6; Serine And Arginine Rich Splicing Factor 6; SRP55; Serine/Arginine-Rich Splicing Factor 6; SFRS6; B52; Splicing Factor, Arginine/Serine-Rich 6; Pre-mRNA-Splicing Factor SRP55; SR Splicing Factor 6; Splicing Factor, Arginine/Serine-Rich, 55 kDa; Epididymis Secretory Protein Li 91; Pre-mRNA Splicing Factor SRP55; HEL-S-91

Background

Gene Name: SRSF6

NCBI Gene Entry: [6431](#)

UniProt Entry: [Q13247](#)

Application Information

Molecular Weight: Predicted, 40 kDa; observed, 48 kDa

Clonality: Rabbit monoclonal antibody

Clone ID: 25GB2705

Species Reactivity: Human, mouse, rat

Applications Tested: Western blotting (WB), flow cytometry (FCM), immunocytochemistry (IC)

Immunogen

A synthesized peptide derived from human SRSF6

Isotype

Rabbit IgG

Storage Buffer

Supplied in PBS (pH 7.4) containing 50% glycerol, and 0.02% sodium azide.

Storage

Store at -20 °C for one year.

Recommended Dilutions

Western blotting (WB): 1:1,000-1:5,000

Flow Cytometry (FCM): 1:2,000

Immunocytochemistry (IC): 1:100-1:1,000

SUPPORT

SUPPORT@GENUINBIOTECH.COM
TEL: +1-540-855-7041

ORDERS

SALES@GENUINBIOTECH.COM
FAX: +1-540-855-7041

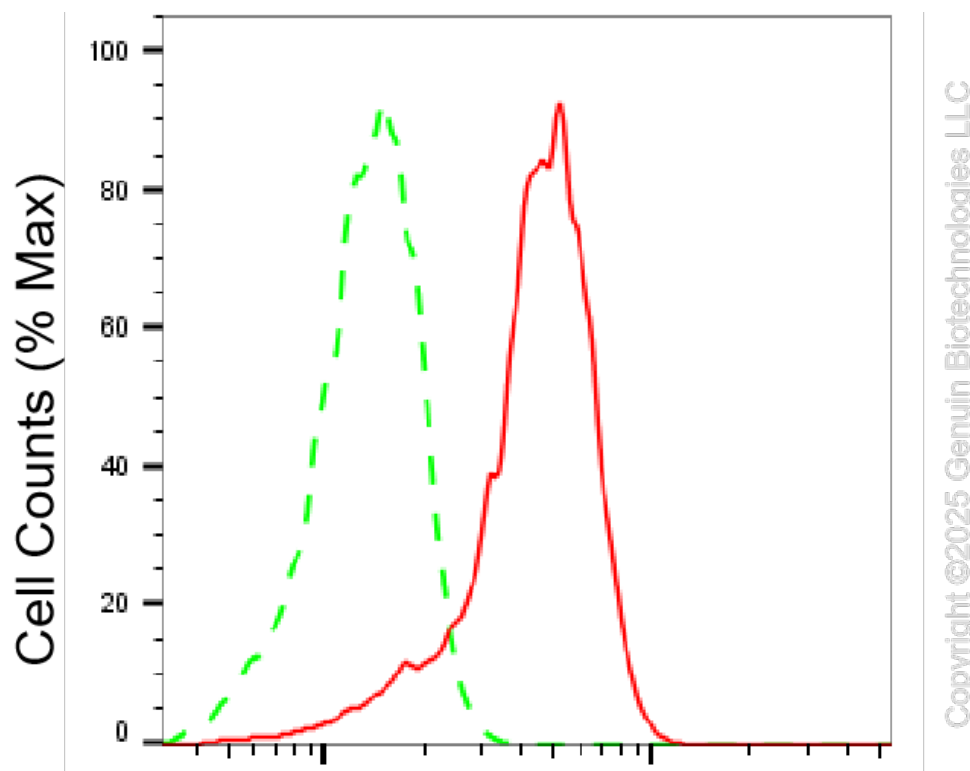
WWW.GENUINBIOTECH.COM

KO-Validated Anti-SRSF6 Recombinant Rabbit Monoclonal Antibody

PAGE 2

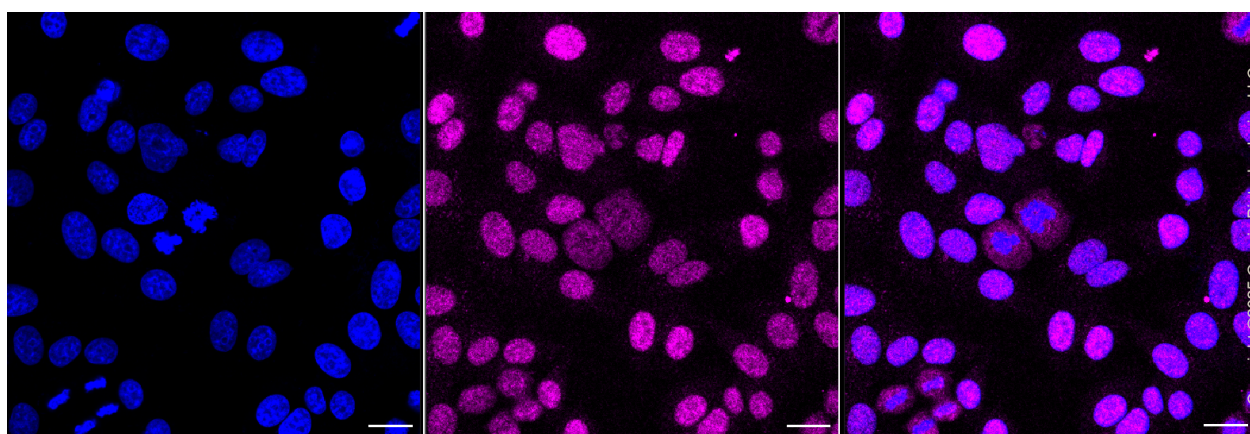
Note: This product is for research use only.

Validation Data



SR protein repeat-Alexa Fluor® 647

Flow cytometric analysis of SR protein repeat expression in HepG2 cells using anti-SR protein repeat antibody (Cat#71206, 1:2,000). Green, isotype control; red, SR protein repeat.



Immunocytochemical staining of HepG2 cells with anti-SR protein repeat antibody (Cat#71206, 1:1,000). Nuclei were stained blue with DAPI; SR protein repeat was stained magenta with Alexa Fluor® 647. Images were taken using Leica stellaris 5. Protein abundance based on laser Intensity and smart gain: Medium. Scale bar, 20 μ m.

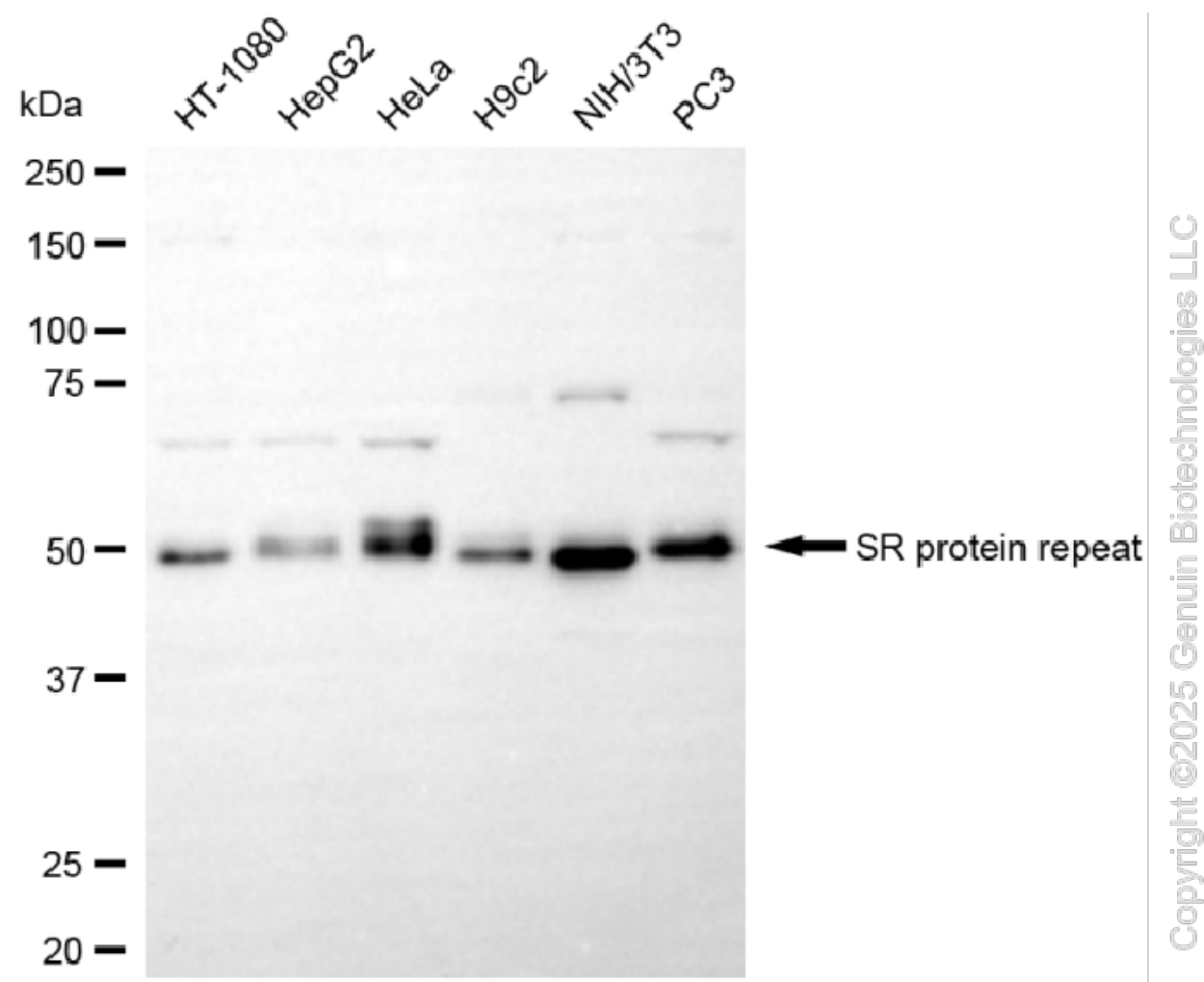
SUPPORT

SUPPORT@GENUINBIOTECH.COM
TEL: +1-540-855-7041

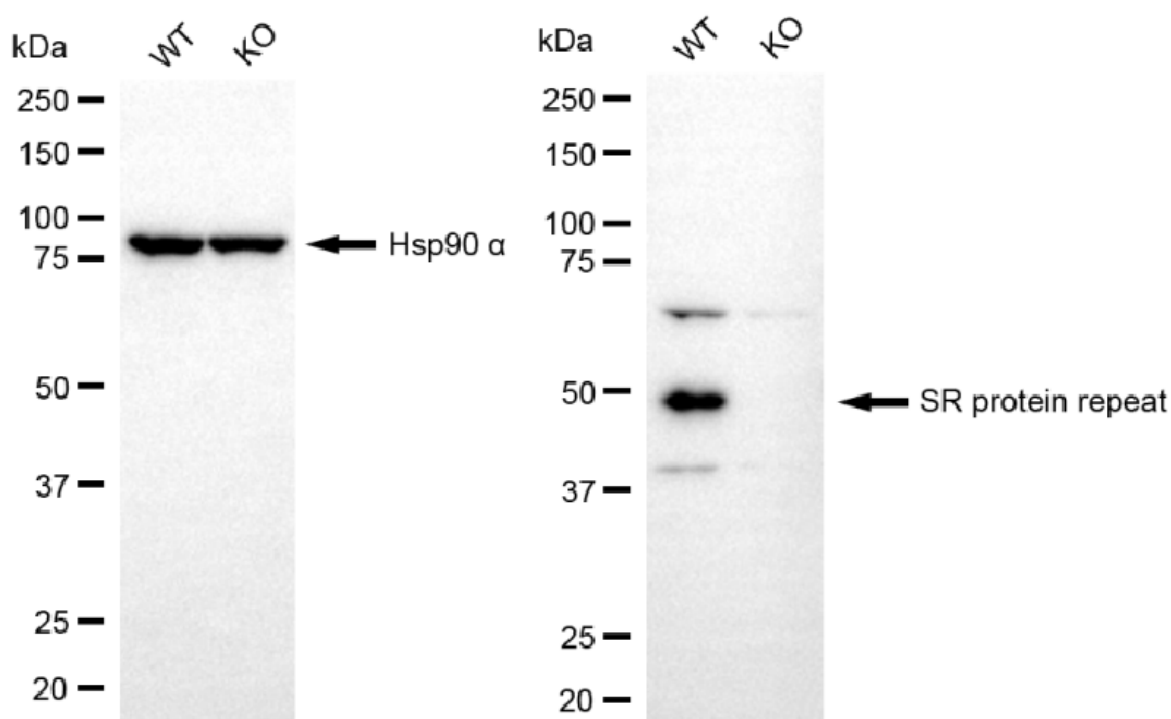
ORDERS

SALES@GENUINBIOTECH.COM
FAX: +1-540-855-7041

WWW.GENUINBIOTECH.COM



Western blotting analysis using anti-SR protein repeat antibody (Cat#71206). Total cell lysates (30 µg) from various cell lines were loaded and separated by SDS-PAGE. The blot was incubated with anti-SR protein repeat antibody (Cat#71206, 1:5,000) and HRP-conjugated goat anti-rabbit secondary antibody (Cat#201, 1:20,000) respectively. Image was developed using FeQ™ ECL Substrate Kit (Cat#226).



Western blotting analysis using anti-SR protein repeat antibody (Cat#71206). SR protein repeat expression in wild type (WT) and SRSF6 knockout (KO) HT-1080 cells with 20 µg of total cell lysates. Hsp90 α serves as a loading control. The blot was incubated with anti-SR protein repeat antibody (Cat#71206, 1:5,000) and HRP-conjugated goat anti-rabbit secondary antibody (Cat#201, 1:20,000) respectively. Image was developed using FeQ™ ECL Substrate Kit (Cat#226).