

KO-Validated Anti-ETS Transcription Factor ELK1 Recombinant Rabbit Monoclonal



Catalog #: 71210

Aliases

ELK1; ETS Transcription Factor ELK1; ELK1, Member Of ETS Oncogene Family;
ETS Domain-Containing Protein Elk-1; Tyrosine Kinase (ELK1) Oncogene; ELK1, ETS
Transcription Factor; ETS-Like Gene 1

Background

Gene Name: ELK1

NCBI Gene Entry: [2002](#)

UniProt Entry: [P19419](#)

Application Information

Molecular Weight: Predicted, 45 kDa, observed, 62 kDa

Clonality: Rabbit monoclonal antibody

Clone ID: 25GB2845

Species Reactivity: Human, mouse, rat

Applications Tested: Western blotting (WB), flow cytometry (FCM), immunocytochemistry (IC)

Immunogen

A synthesized peptide derived from human ELK1

Isotype

Rabbit IgG

Storage Buffer

Supplied in PBS (pH 7.4) containing 50% glycerol, and 0.02% sodium azide.

Storage

Store at -20 °C for one year.

Recommended Dilutions

Western blotting (WB): 1:1,000-1:5,000

Flow Cytometry (FCM): 1:2,000

Immunocytochemistry (IC): 1:100-1:1,000

Note: This product is for research use only.

SUPPORT

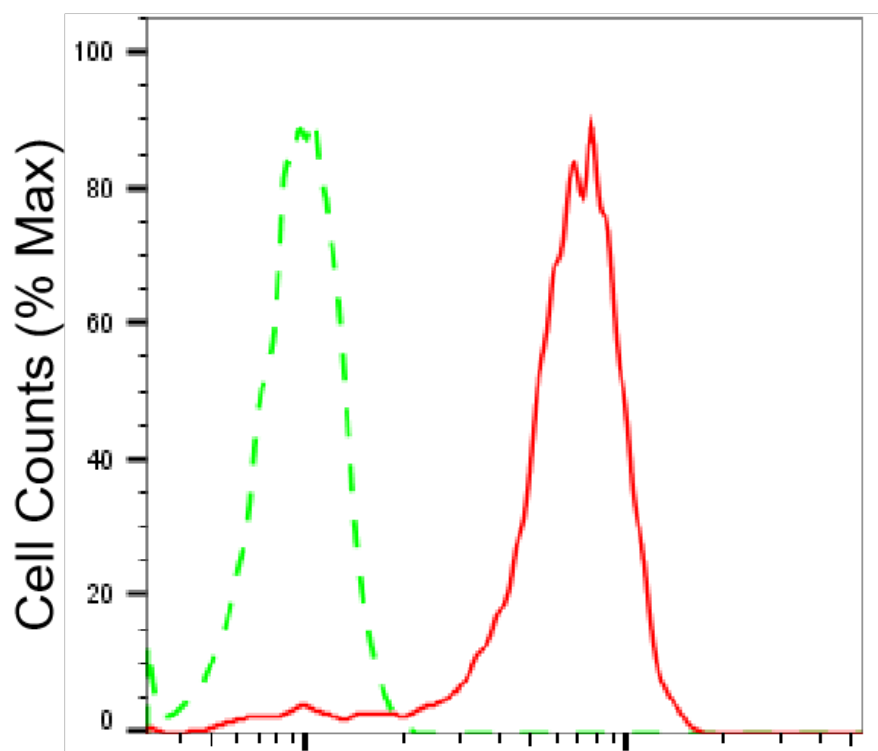
SUPPORT@GENUINBIOTECH.COM
TEL: +1-540-855-7041

ORDERS

SALES@GENUINBIOTECH.COM
FAX: +1-540-855-7041

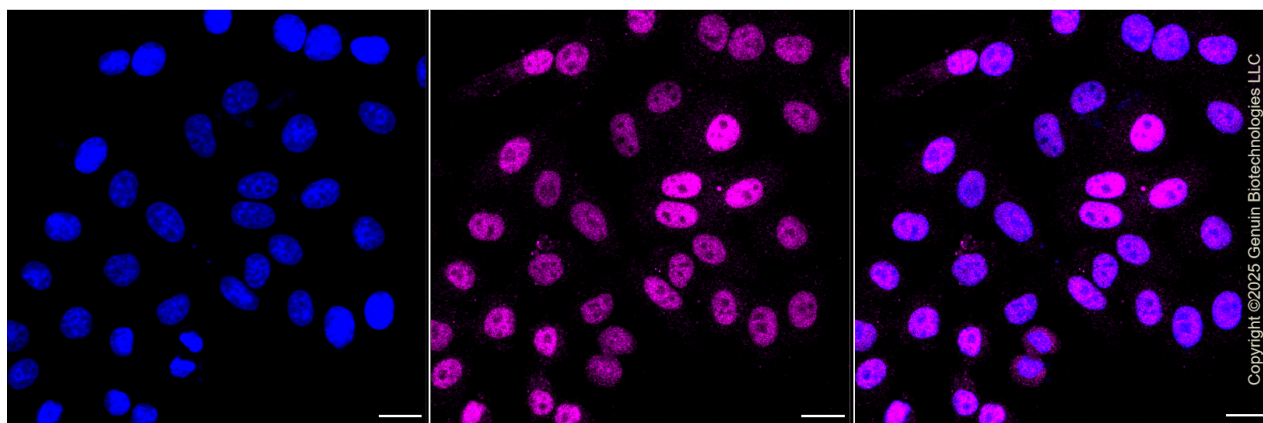
WWW.GENUINBIOTECH.COM

Validation Data



ELK1-Alexa Fluor® 647

Flow cytometric analysis of ELK1 expression in HepG2 cells using anti-ELK1 antibody (Cat#71210, 1:2,000). Green, isotype control; red, ELK1.



Immunocytochemical staining of HepG2 cells with anti-ELK1 antibody (Cat#71210, 1:1,000). Nuclei were stained blue with DAPI; ELK1 was stained magenta with Alexa Fluor® 647. Images were taken using Leica stellaris 5. Protein abundance based on laser Intensity and smart gain: Medium. Scale bar, 20 µm.

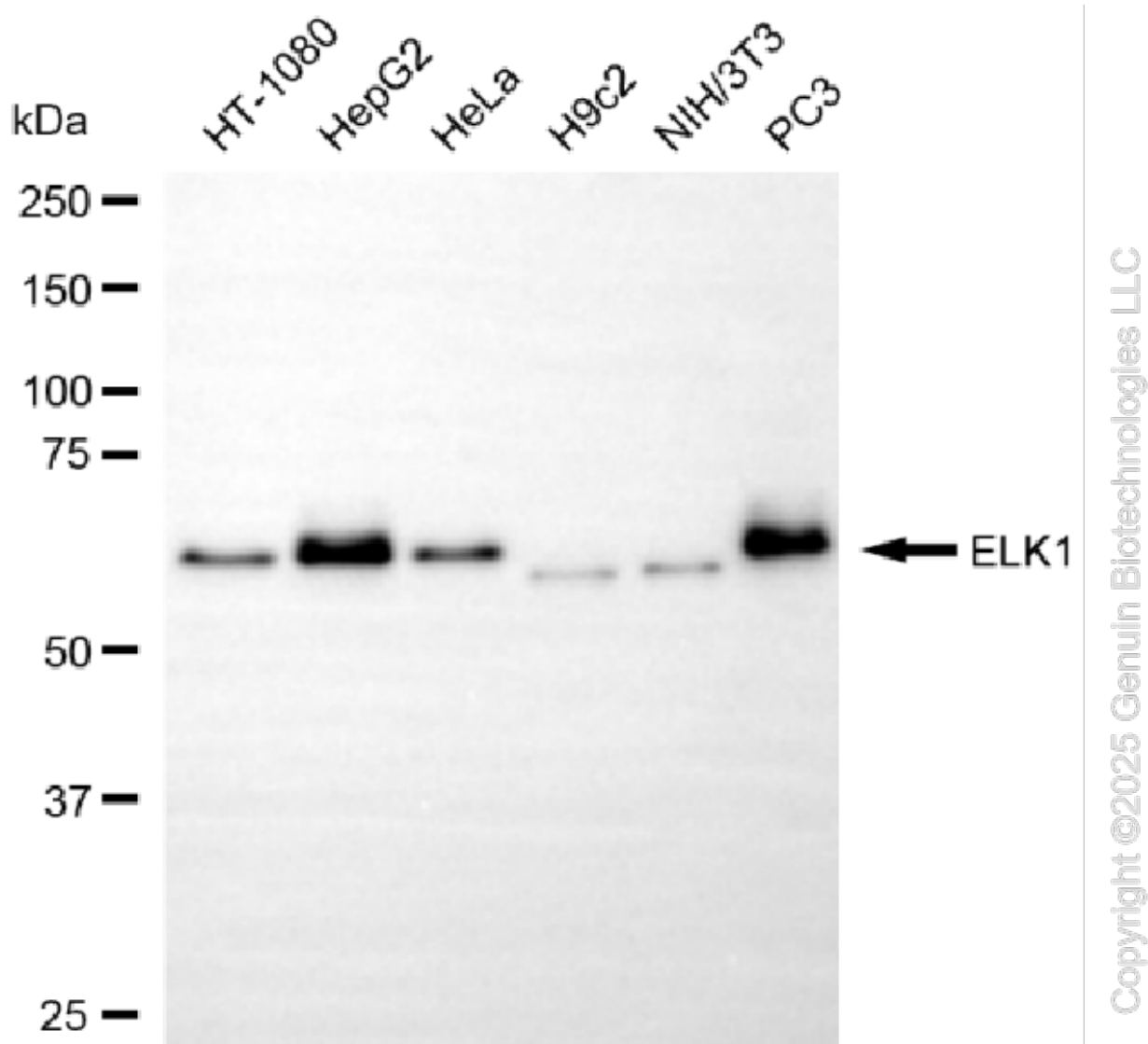
SUPPORT

SUPPORT@GENUINBIOTECH.COM
TEL: +1-540-855-7041

ORDERS

SALES@GENUINBIOTECH.COM
FAX: +1-540-855-7041

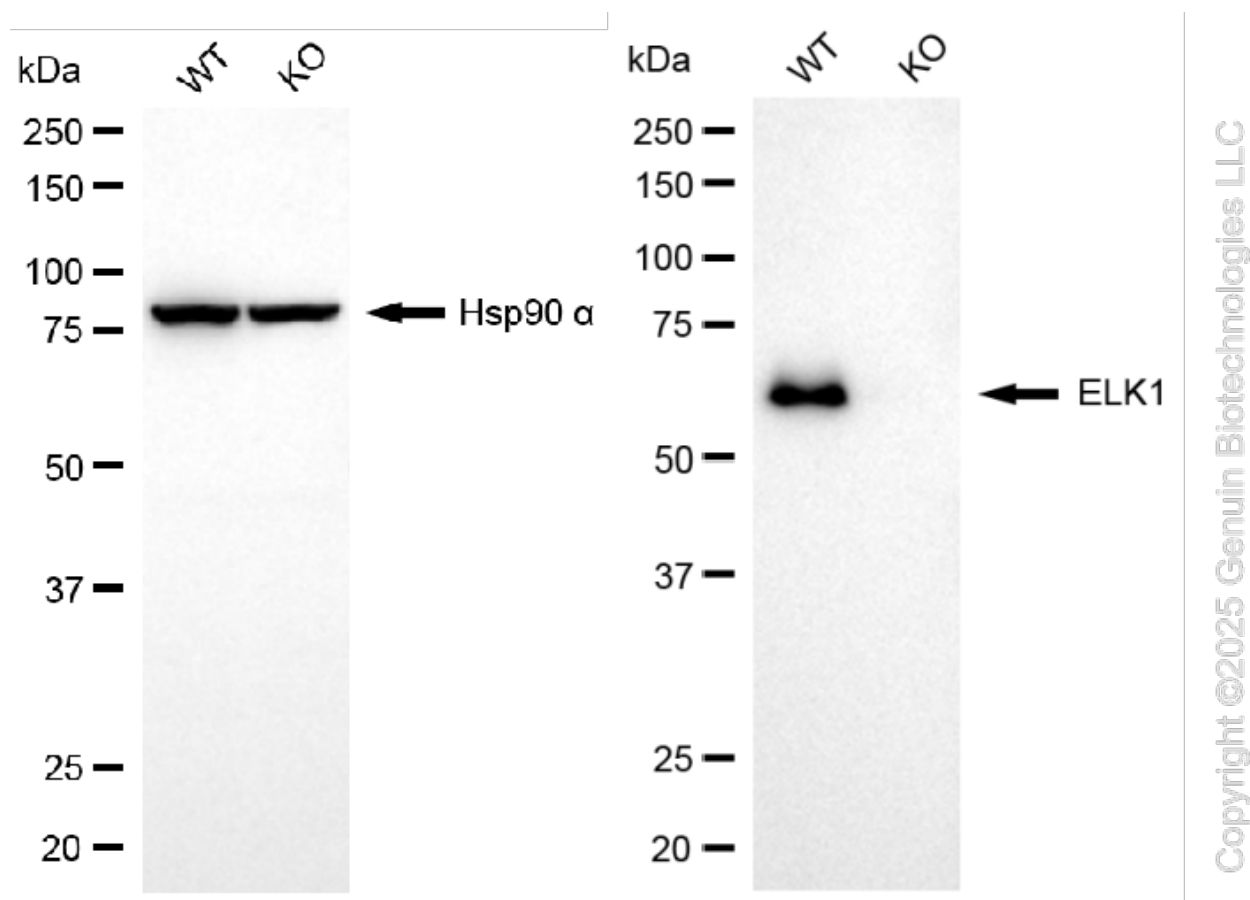
WWW.GENUINBIOTECH.COM



Western blotting analysis using anti-ELK1 antibody (Cat#71210). Total cell lysates (30 μ g) from various cell lines were loaded and separated by SDS-PAGE. The blot was incubated with anti-ELK1 antibody (Cat#71210, 1:5,000) and HRP-conjugated goat anti-rabbit secondary antibody (Cat#201, 1:20,000) respectively. Image was developed using NaQ™ ECL Substrate Kit (Cat#716).

KO-Validated Anti-ETS Transcription Factor ELK1 Recombinant Rabbit Monoclonal

PAGE 4



Western blotting analysis using anti-ELK1 antibody (Cat#71210). ELK1 expression in wild type (WT) and ELK1 knockout (KO) HSHC cells with 20 μ g of total cell lysates. Hsp90 α serves as a loading control. The blot was incubated with anti-ELK1 antibody (Cat#71210, 1:5,000) and HRP-conjugated goat anti-rabbit secondary antibody (Cat#201, 1:20,000) respectively. Image was developed using FeQ™ ECL Substrate Kit (Cat#226).

SUPPORT

SUPPORT@GENUINBIOTECH.COM
TEL: +1-540-855-7041

ORDERS

SALES@GENUINBIOTECH.COM
FAX: +1-540-855-7041

WWW.GENUINBIOTECH.COM