

KO-Validated Anti-Keratin 8 Recombinant Rabbit Monoclonal Antibody



Catalog #: 71211

Aliases

KRT8; Keratin 8; CK-8; CYK8; K8; CARD2; K2C8; KO; Keratin, Type II Cytoskeletal 8; Type-II Keratin Kb8; Keratin 8, Type II; Keratin-8

Background

Gene Name: KRT8

NCBI Gene Entry: [3856](#)

UniProt Entry: [P05787](#)

Application Information

Molecular Weight: Predicted, 54 kDa; observed, 50 kDa

Clonality: Rabbit monoclonal antibody

Clone ID: 25GB2850

Species Reactivity: Human

Applications Tested: Western blotting (WB), flow cytometry (FCM), immunocytochemistry (IC)

Immunogen

A synthesized peptide derived from human Cytokeratin 8

Isotype

Rabbit IgG

Storage Buffer

Supplied in PBS (pH 7.4) containing 50% glycerol, and 0.02% sodium azide.

Storage

Store at -20 °C for one year.

Recommended Dilutions

Western blotting (WB): 1:4,000-1:20,000

Flow Cytometry (FCM): 1:2,000

Immunocytochemistry (IC): 1:100-1:1,000

Note: This product is for research use only.

Validation Data

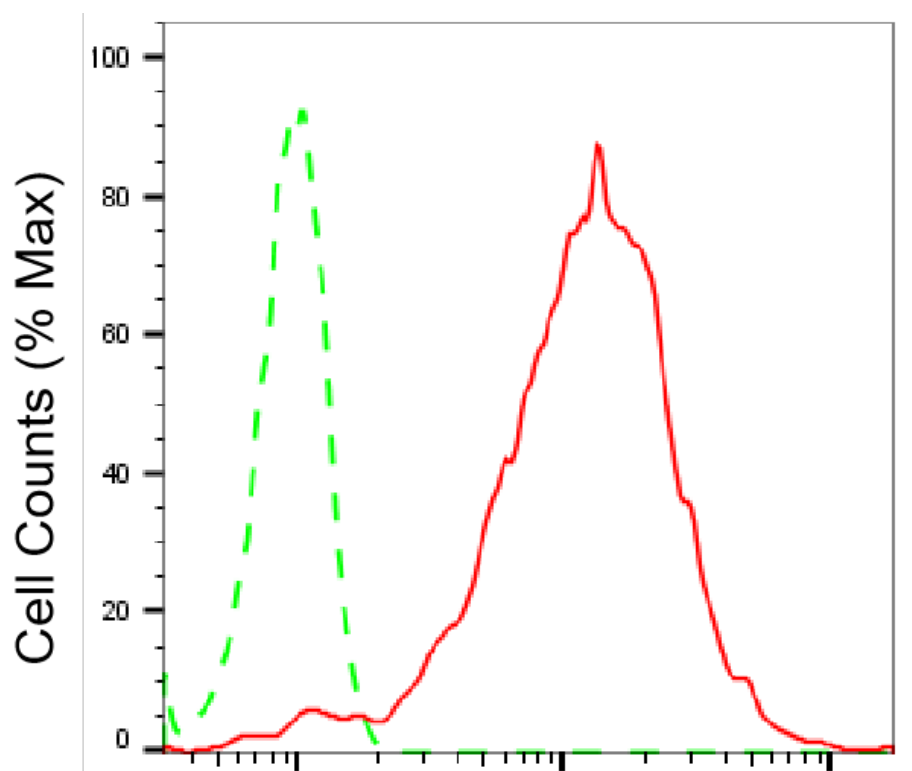
SUPPORT

SUPPORT@GENUINBIOTECH.COM
TEL: +1-540-855-7041

ORDERS

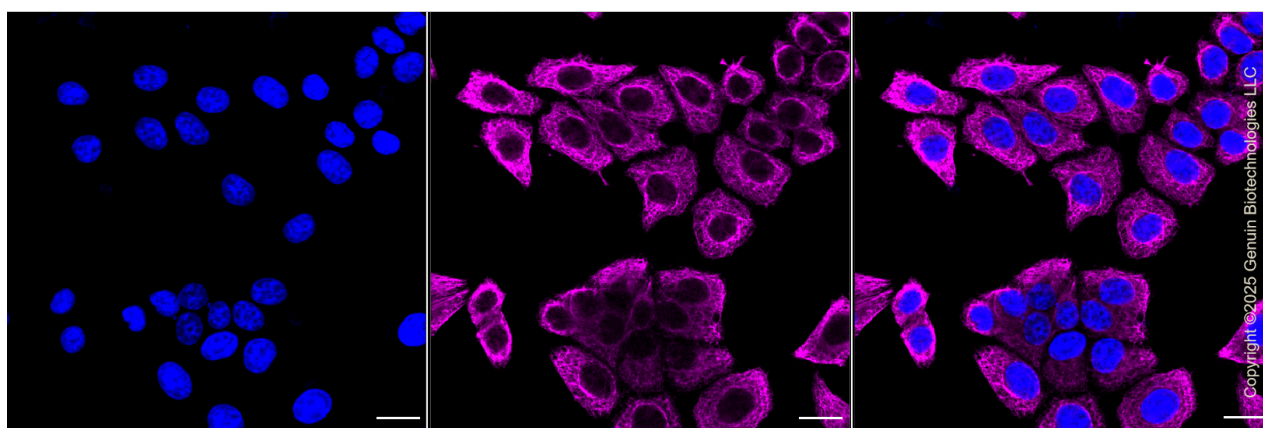
SALES@GENUINBIOTECH.COM
FAX: +1-540-855-7041

WWW.GENUINBIOTECH.COM



Keratin 8-Alexa Fluor® 647

Flow cytometric analysis of Keratin 8 expression in HepG2 cells using anti-Keratin 8 antibody (Cat#71211, 1:2,000). Green, isotype control; red, Keratin 8.



Immunocytochemical staining of HepG2 cells with anti-Keratin 8 antibody (Cat#71211, 1:1,000). Nuclei were stained blue with DAPI; Keratin 8 was stained magenta with Alexa Fluor® 647. Images were taken using Leica stellaris 5. Protein abundance based on laser Intensity and smart gain: High. Scale bar, 20 µm.

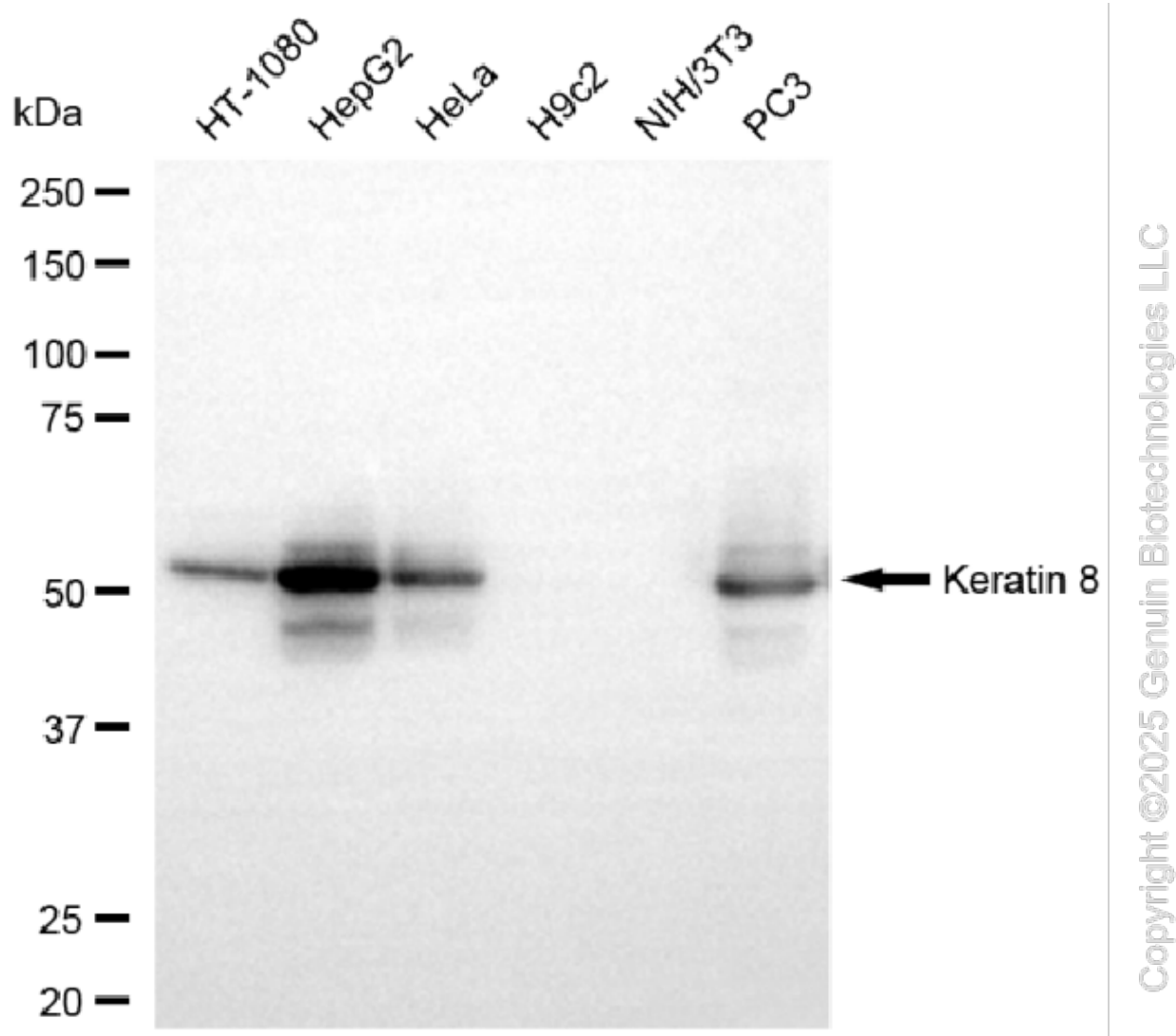
SUPPORT

SUPPORT@GENUINBIOTECH.COM
TEL: +1-540-855-7041

ORDERS

SALES@GENUINBIOTECH.COM
FAX: +1-540-855-7041

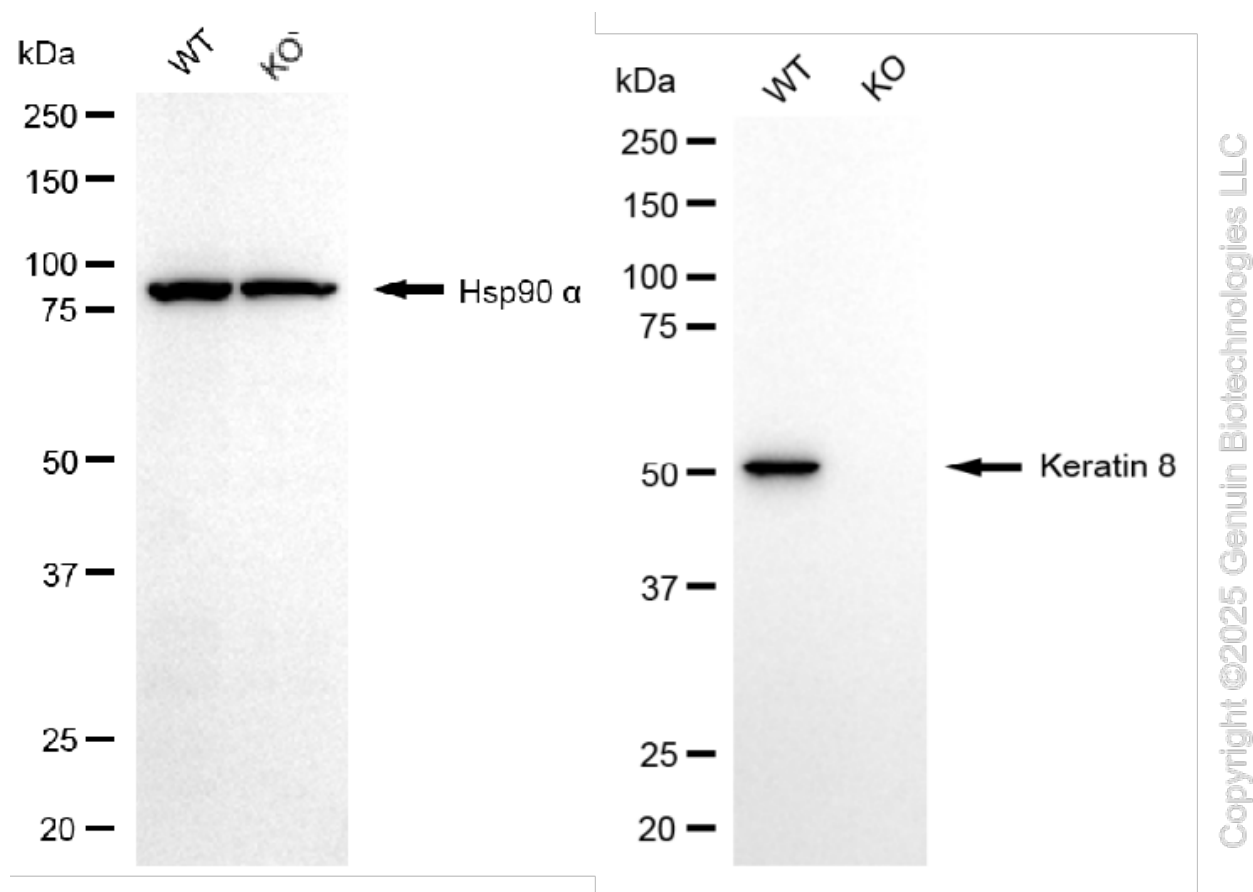
WWW.GENUINBIOTECH.COM



Western blotting analysis using anti-keratin 8 antibody (Cat#71211). Total cell lysates (30 µg) from various cell lines were loaded and separated by SDS-PAGE. The blot was incubated with anti-keratin 8 antibody (Cat#71211, 1:20,000) and HRP-conjugated goat anti-rabbit secondary antibody (Cat#201, 1:20,000) respectively. Image was developed using NaQ™ ECL Substrate Kit (Cat#716).

KO-Validated Anti-Keratin 8 Recombinant Rabbit Monoclonal Antibody

PAGE 4



Western blotting analysis using anti-keratin 8 antibody (Cat#71211). Keratin 8 expression in wild type (WT) and keratin 8 (KRT8) knockout (KO) HSHC cells with 20 µg of total cell lysates. Hsp90 α serves as a loading control. The blot was incubated with anti-keratin 8 antibody (Cat#71211, 1:20,000) and HRP-conjugated goat anti-rabbit secondary antibody (Cat#201, 1:20,000) respectively. Image was developed using NaQ™ ECL Substrate Kit (Cat#716).

SUPPORT

SUPPORT@GENUINBIOTECH.COM
TEL: +1-540-855-7041

ORDERS

SALES@GENUINBIOTECH.COM
FAX: +1-540-855-7041

WWW.GENUINBIOTECH.COM