

KO-Validated Anti-Fyn Recombinant Rabbit Monoclonal Antibody



Catalog #: 71213

Aliases

FYN; FYN Proto-Oncogene, Src Family Tyrosine Kinase; SLK; SYN; FYN Oncogene Related To SRC, FGR, YES; Tyrosine-Protein Kinase Fyn; Proto-Oncogene C-Fyn; Proto-Oncogene Syn; Src-Like Kinase; EC 2.7.10.2; MGC45350; OKT3-Induced Calcium Influx Regulator; Tyrosine Kinase P59fyn(T); Src/Yes-Related Novel; C-Syn Protooncogene; EC 2.7.10; P59-FYN; P59-Fyn

Background

Gene Name: FYN

NCBI Gene Entry: [2534](#)

UniProt Entry: [P06241](#)

Application Information

Molecular Weight: Predicted, 61 kDa; observed, 61 kDa

Clonality: Rabbit monoclonal antibody

Clone ID: 25GB2930

Species Reactivity: Human, mouse, rat

Applications Tested: Western blotting (WB)

Immunogen

A synthesized peptide derived from human Fyn

Isotype

Rabbit IgG

Storage Buffer

Supplied in PBS (pH 7.4) containing 50% glycerol, and 0.02% sodium azide.

Storage

Store at -20 °C for one year.

Recommended Dilutions

Western blotting (WB): 1:1,000-1:5,000

Note: This product is for research use only.

Validation Data

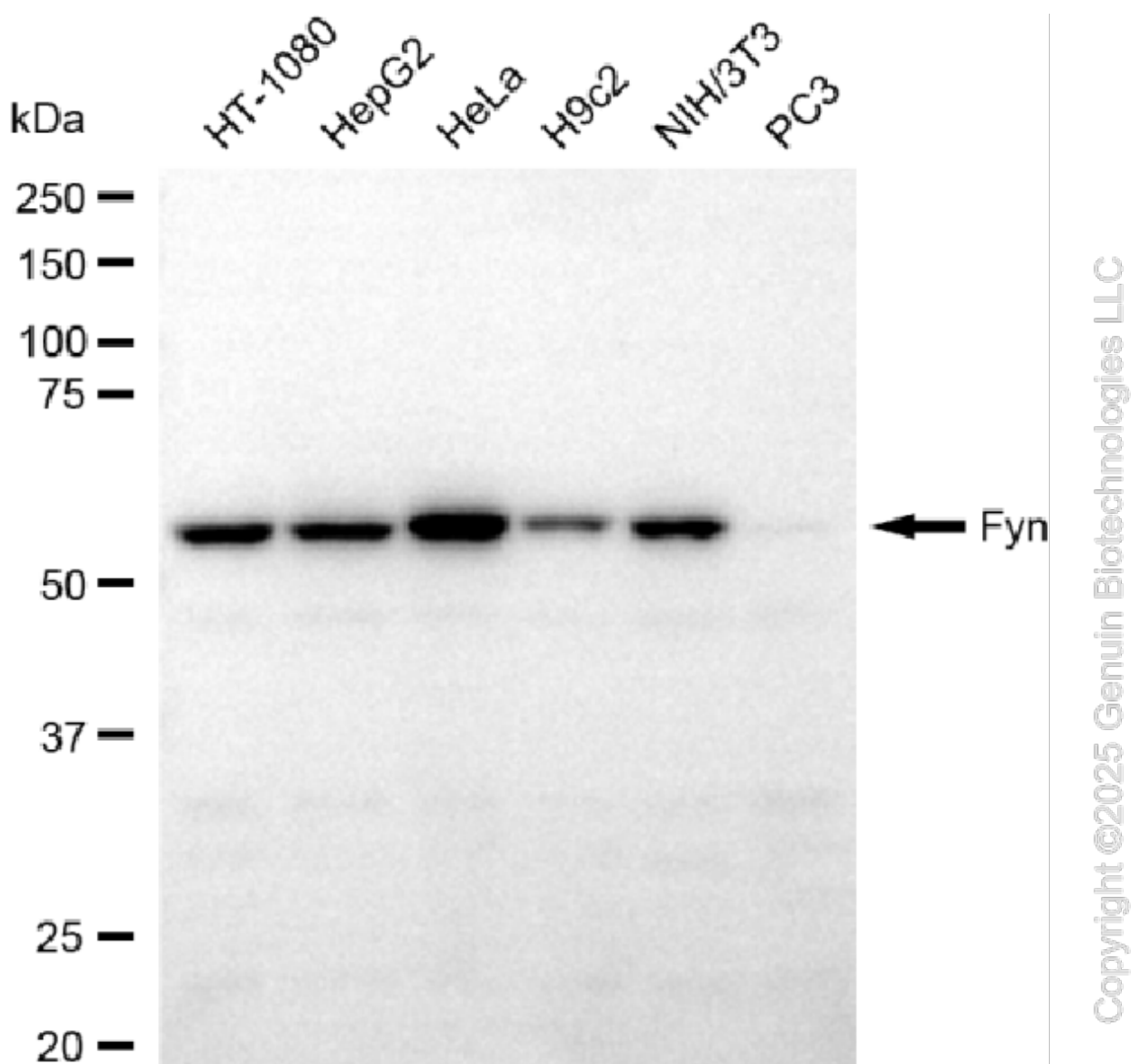
SUPPORT

SUPPORT@GENUINBIOTECH.COM
TEL: +1-540-855-7041

ORDERS

SALES@GENUINBIOTECH.COM
FAX: +1-540-855-7041

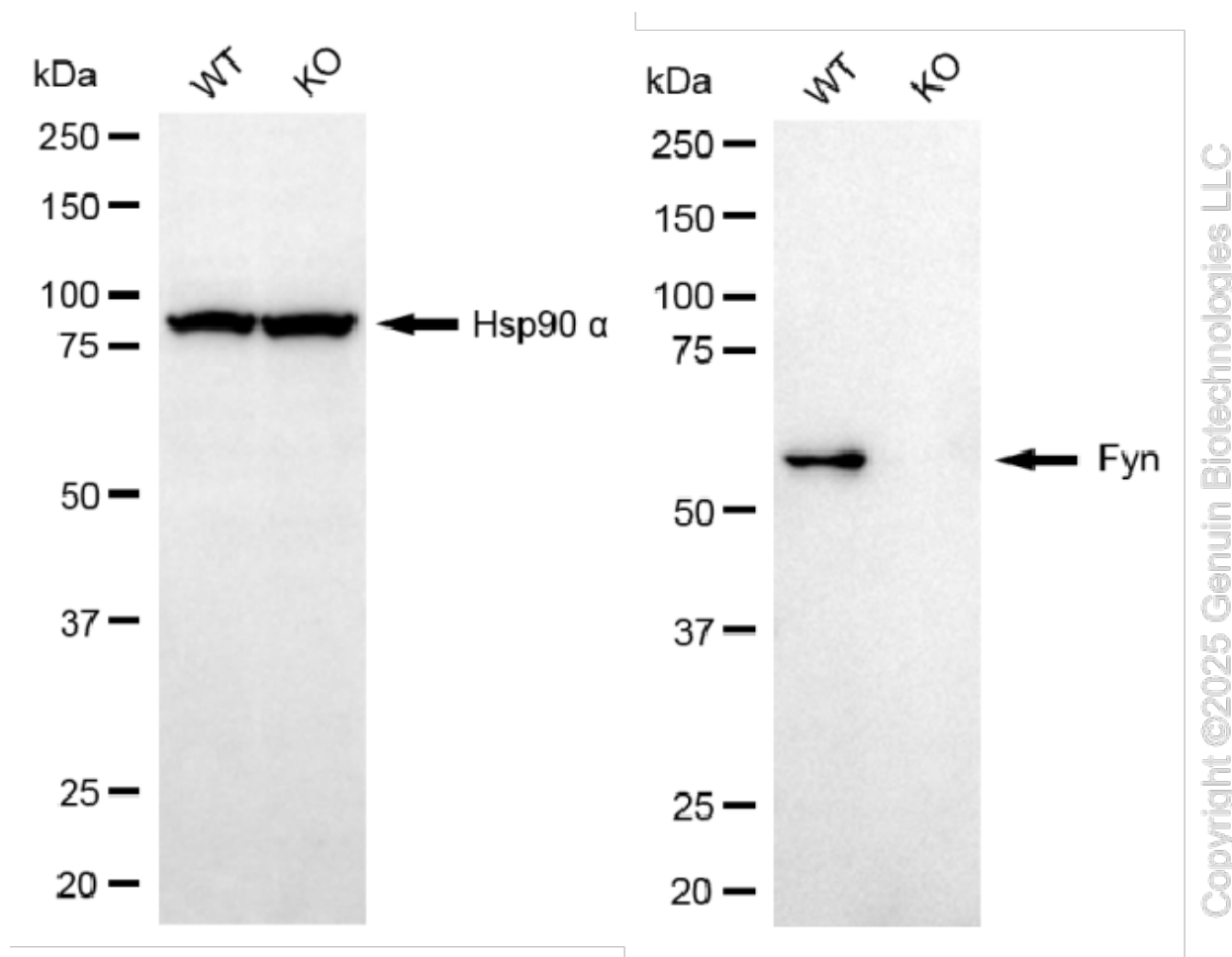
WWW.GENUINBIOTECH.COM



Western blotting analysis using anti-fyn antibody (Cat#71213). Total cell lysates (30 μ g) from various cell lines were loaded and separated by SDS-PAGE. The blot was incubated with anti-fyn antibody (Cat#71213, 1:5,000) and HRP-conjugated goat anti-rabbit secondary antibody (Cat#201, 1:20,000) respectively. Image was developed using FeQ™ ECL Substrate Kit (Cat#226).

KO-Validated Anti-Fyn Recombinant Rabbit Monoclonal Antibody

PAGE 3



Western blotting analysis using anti-Fyn antibody (Cat#71213). Fyn expression in wild-type (WT) and FYN knockout (KO) 293T cells with 20 μ g of total cell lysates. Hsp90 α serves as a loading control. The blot was incubated with anti-Fyn antibody (Cat#71213, 1:5,000) and HRP-conjugated goat anti-rabbit secondary antibody (Cat#201, 1:20,000) respectively. Image was developed using NaQ™ ECL Substrate Kit (Cat#716).

SUPPORT

SUPPORT@GENUINBIOTECH.COM
TEL: +1-540-855-7041

ORDERS

SALES@GENUINBIOTECH.COM
FAX: +1-540-855-7041

WWW.GENUINBIOTECH.COM