

KO-Validated Anti-Ribosomal Protein SA Recombinant Rabbit Monoclonal Antibody



Catalog #: 71214

Aliases

RPSA; Ribosomal Protein SA; 37LRP; LAMR1; LRP; P40; US2; SA; Laminin Receptor 1 (67kD, Ribosomal Protein SA); Multidrug Resistance-Associated Protein MGr1-Ag; Colon Carcinoma Laminin-Binding Protein; Laminin-Binding Protein Precursor P40; Small Ribosomal Subunit Protein US2; 37/67 KDa Laminin Receptor; 40S Ribosomal Protein SA; 67 KDa Laminin Receptor; NEM/1CHD4; LBP/P40; LRP/LR; LAMBR; 67LR; LamR; 37 KDa Laminin Receptor Precursor; 37 KDa Laminin Receptor; Laminin Receptor 1; ICAS; LBP

Background

Gene Name: RPSA

NCBI Gene Entry: [3921](#)

UniProt Entry: [P08865](#)

Application Information

Molecular Weight: Predicted, 33 kDa, observed, 42 kDa

Clonality: Rabbit monoclonal antibody

Clone ID: 25GB2950

Species Reactivity: Human, mouse, rat

Applications Tested: Western blotting (WB), flow cytometry (FCM), immunocytochemistry (IC)

Immunogen

A synthesized peptide derived from human 67kDa Laminin Receptor

Isotype

Rabbit IgG

Storage Buffer

Supplied in PBS (pH 7.4) containing 50% glycerol, and 0.02% sodium azide.

Storage

Store at -20 °C for one year.

Recommended Dilutions

Western blotting (WB): 1:1,000-1:5,000

Flow Cytometry (FCM): 1:2,000

Immunocytochemistry (IC): 1:100-1:1,000

SUPPORT

SUPPORT@GENUINBIOTECH.COM
TEL: +1-540-855-7041

ORDERS

SALES@GENUINBIOTECH.COM
FAX: +1-540-855-7041

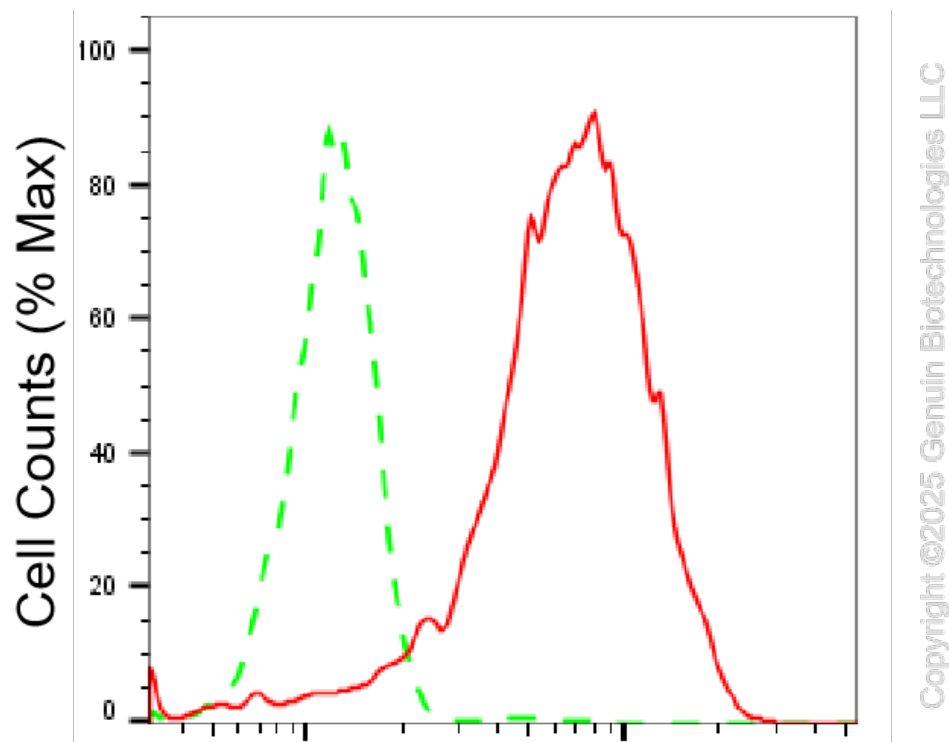
WWW.GENUINBIOTECH.COM

KO-Validated Anti-Ribosomal Protein SA Recombinant Rabbit Monoclonal Antibody

PAGE 2

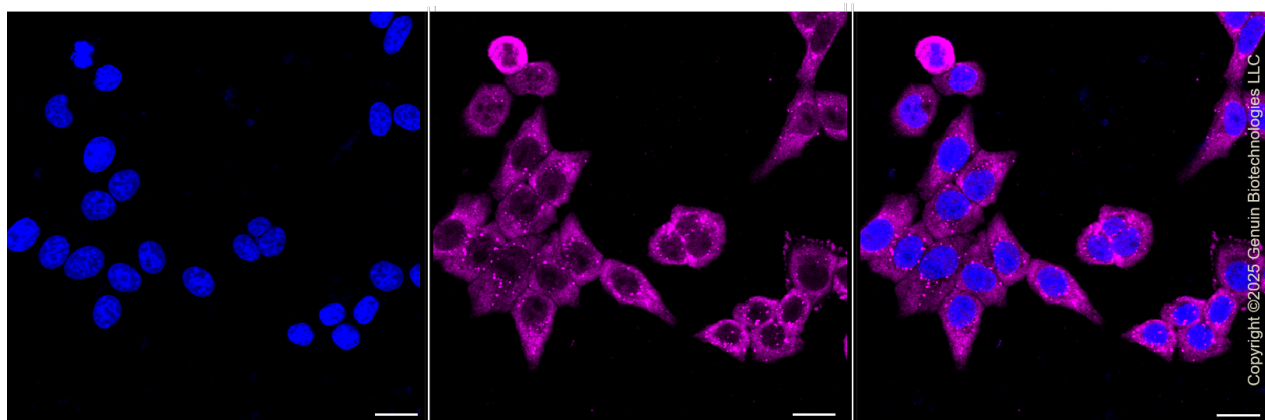
Note: This product is for research use only.

Validation Data



Ribosomal protein SA-Alexa Fluor® 647

Flow cytometric analysis of Ribosomal protein SAc expression in HepG2 cells using anti-Ribosomal protein SA antibody (Cat#71214, 1:2,000). Green, isotype control; red, Ribosomal protein SA.



Immunocytochemical staining of HepG2 cells with anti-Ribosomal protein SA antibody (Cat#71214, 1:1,000). Nuclei were stained blue with DAPI; Ribosomal protein SA was stained

SUPPORT

SUPPORT@GENUINBIOTECH.COM
TEL: +1-540-855-7041

ORDERS

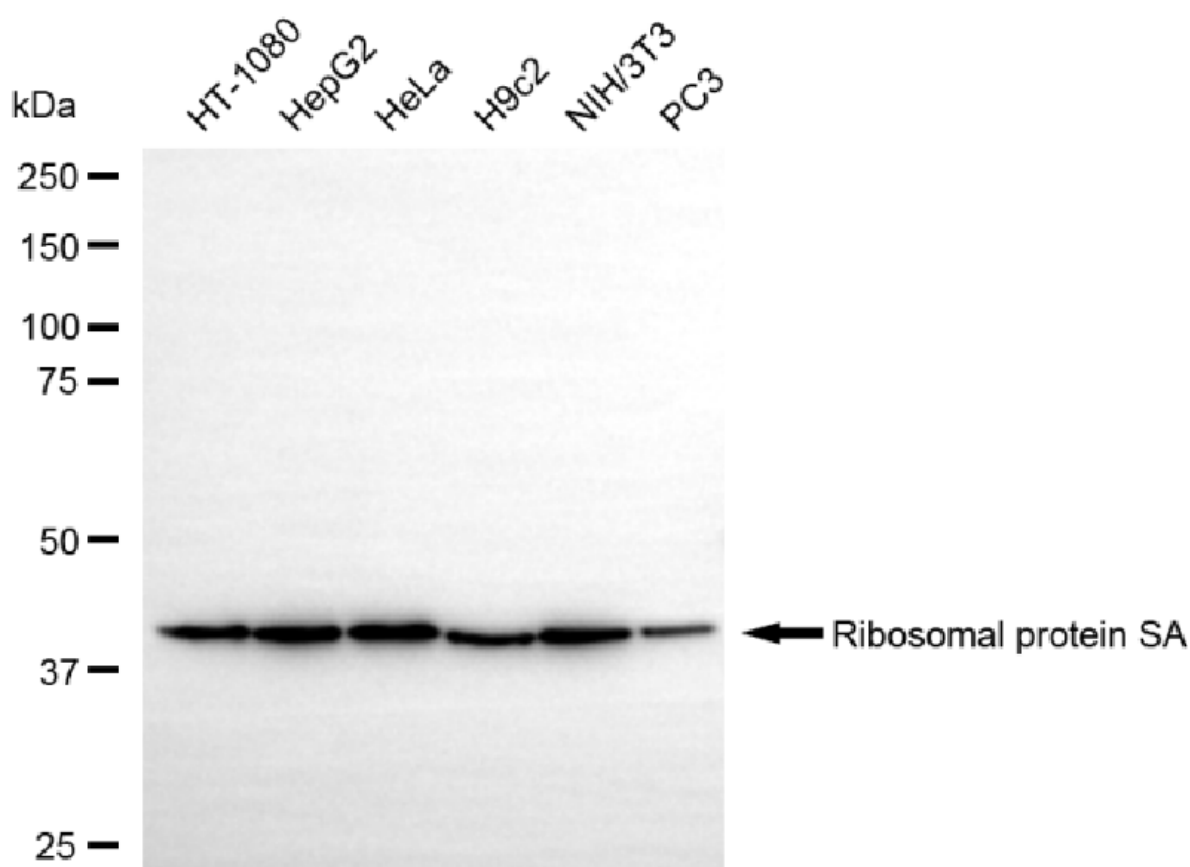
SALES@GENUINBIOTECH.COM
FAX: +1-540-855-7041

WWW.GENUINBIOTECH.COM

KO-Validated Anti-Ribosomal Protein SA Recombinant Rabbit Monoclonal Antibody

PAGE 3

magenta with Alexa Fluor® 647. Images were taken using Leica stellaris 5. Protein abundance based on laser Intensity and smart gain: Medium. Scale bar, 20 µm.



Western blotting analysis using anti-ribosomal protein SA antibody (Cat#71214). Total cell lysates (30 µg) from various cell lines were loaded and separated by SDS-PAGE. The blot was incubated with anti-ribosomal protein SA antibody (Cat#71214, 1:5,000) and HRP-conjugated goat anti-rabbit secondary antibody (Cat#201, 1:20,000) respectively. Image was developed using NaQ™ ECL Substrate Kit (Cat#716).

SUPPORT

SUPPORT@GENUINBIOTECH.COM
TEL: +1-540-855-7041

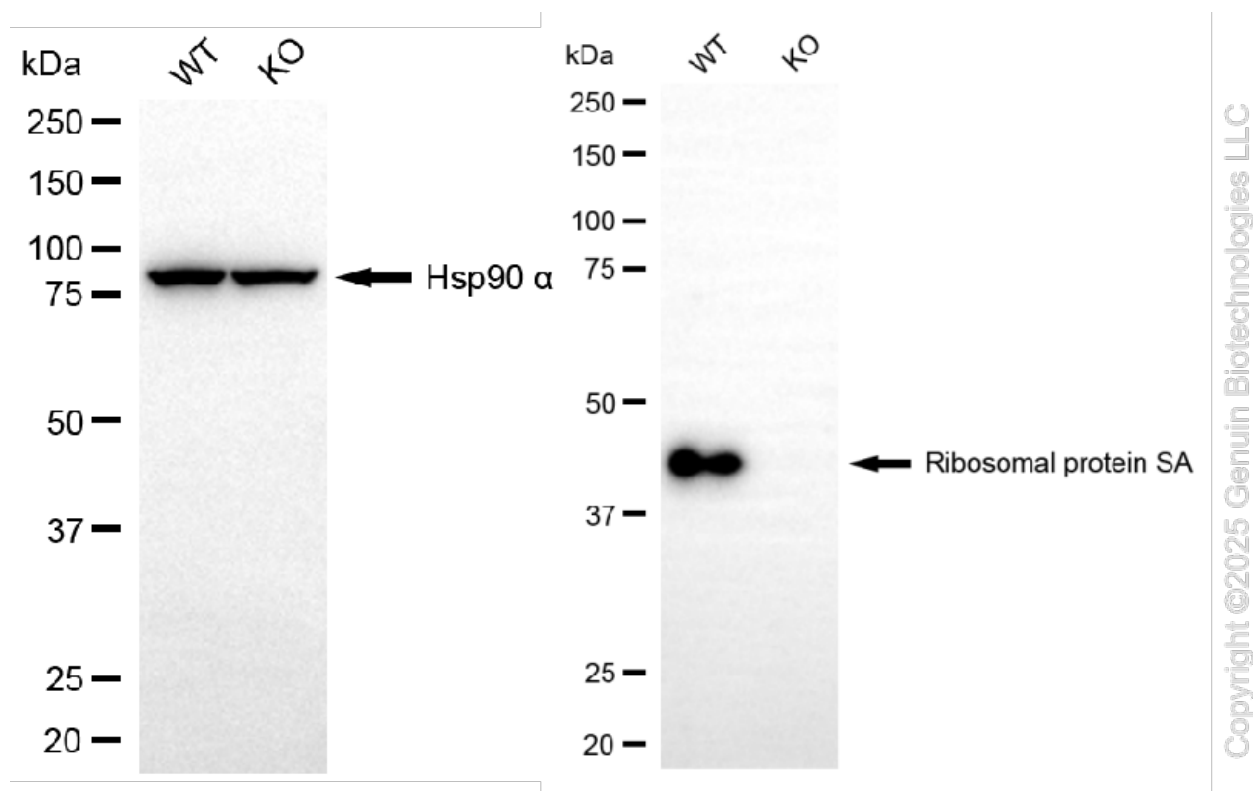
ORDERS

SALES@GENUINBIOTECH.COM
FAX: +1-540-855-7041

WWW.GENUINBIOTECH.COM

KO-Validated Anti-Ribosomal Protein SA Recombinant Rabbit Monoclonal Antibody

PAGE 4



Western blotting analysis using anti-ribosomal protein SA antibody (Cat#71214). Ribosomal protein SA expression in wild type (WT) and ribosomal protein SA (RPSA) knockout (KO) HT-1080 cells with 20 µg of total cell lysates. Hsp90 α serves as a loading control. The blot was incubated with anti-ribosomal protein SA antibody (Cat#71214, 1:5,000) and HRP-conjugated goat anti-rabbit secondary antibody (Cat#201, 1:20,000) respectively. Image was developed using NaQ™ ECL Substrate Kit (Cat#716).

SUPPORT

SUPPORT@GENUINBIOTECH.COM
TEL: +1-540-855-7041

ORDERS

SALES@GENUINBIOTECH.COM
FAX: +1-540-855-7041

WWW.GENUINBIOTECH.COM