

# KO-Validated Anti-Endonuclease G Recombinant Rabbit Monoclonal Antibody



**Catalog #: 71216**

## Aliases

ENDO G; Endonuclease G; Endonuclease G, Mitochondrial; Endo G; Mitochondrial Endonuclease G; EC 3.1.30.-

## Background

Gene Name: ENDOG

NCBI Gene Entry: [2021](#)

UniProt Entry: [Q14249](#)

## Application Information

Molecular Weight: Predicted, 33 kDa, observed, 30 kDa

Clonality: Rabbit monoclonal antibody

Clone ID: 25GB3035

Species Reactivity: Human, mouse, rat

Applications Tested: Western blotting (WB), flow cytometry (FCM), immunocytochemistry (IC)

## Immunogen

A synthesized peptide derived from human Endo G

## Isotype

Rabbit IgG

## Storage Buffer

Supplied in PBS (pH 7.4) containing 50% glycerol, and 0.02% sodium azide.

## Storage

Store at -20 °C for one year.

## Recommended Dilutions

Western blotting (WB): 1:1,000-1:5,000

Flow Cytometry (FCM): 1:2,000

Immunocytochemistry (IC): 1:100-1:1,000

**Note:** This product is for research use only.

## Validation Data

---

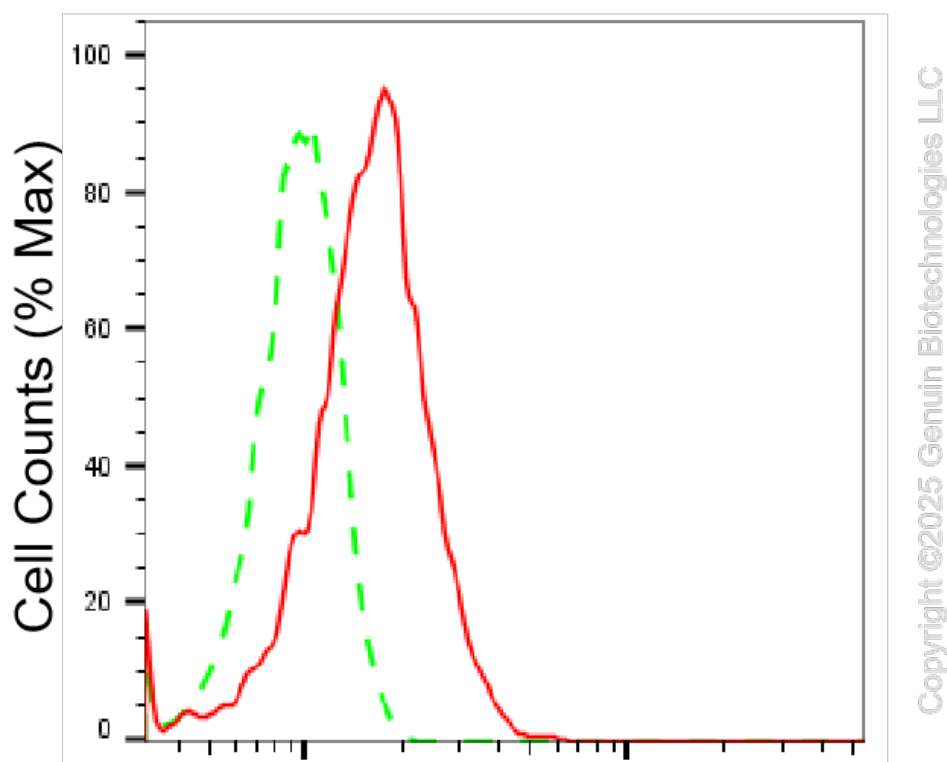
### SUPPORT

SUPPORT@GENUINBIOTECH.COM  
TEL: +1-540-855-7041

### ORDERS

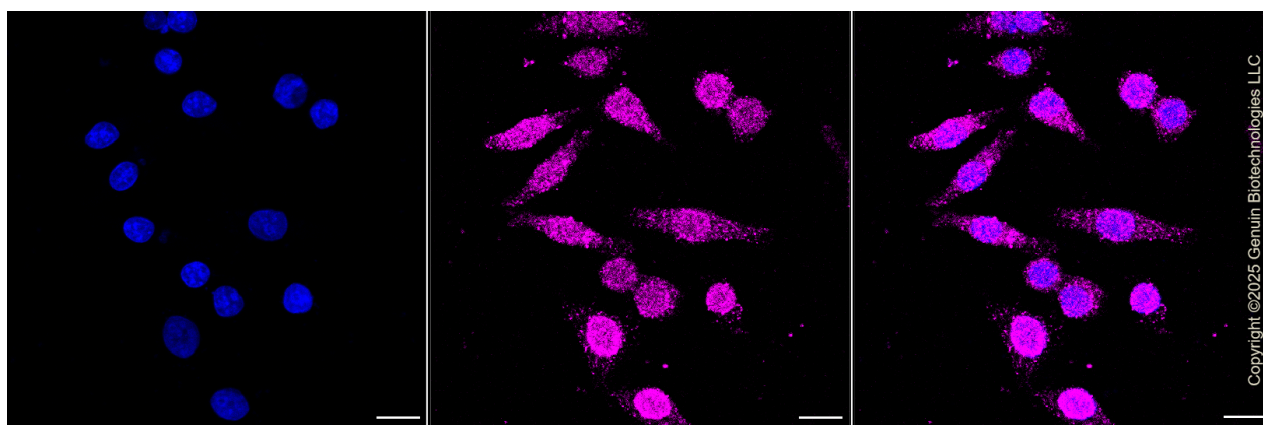
SALES@GENUINBIOTECH.COM  
FAX: +1-540-855-7041

[WWW.GENUINBIOTECH.COM](http://WWW.GENUINBIOTECH.COM)



### Endonuclease G-Alexa Fluor® 647

Flow cytometric analysis of Endonuclease G expression in HepG2 cells using anti-Endonuclease G antibody (Cat#71216, 1:2,000). Green, isotype control; red, Endonuclease G.



Immunocytochemical staining of HepG2 cells with anti-Endonuclease G antibody (Cat#71216, 1:1,000). Nuclei were stained blue with DAPI; Endonuclease G was stained magenta with Alexa Fluor® 647. Images were taken using Leica stellaris 5. Protein abundance based on laser Intensity and smart gain: Medium. Scale bar, 20  $\mu$ m.

#### SUPPORT

SUPPORT@GENUINBIOTECH.COM  
TEL: +1-540-855-7041

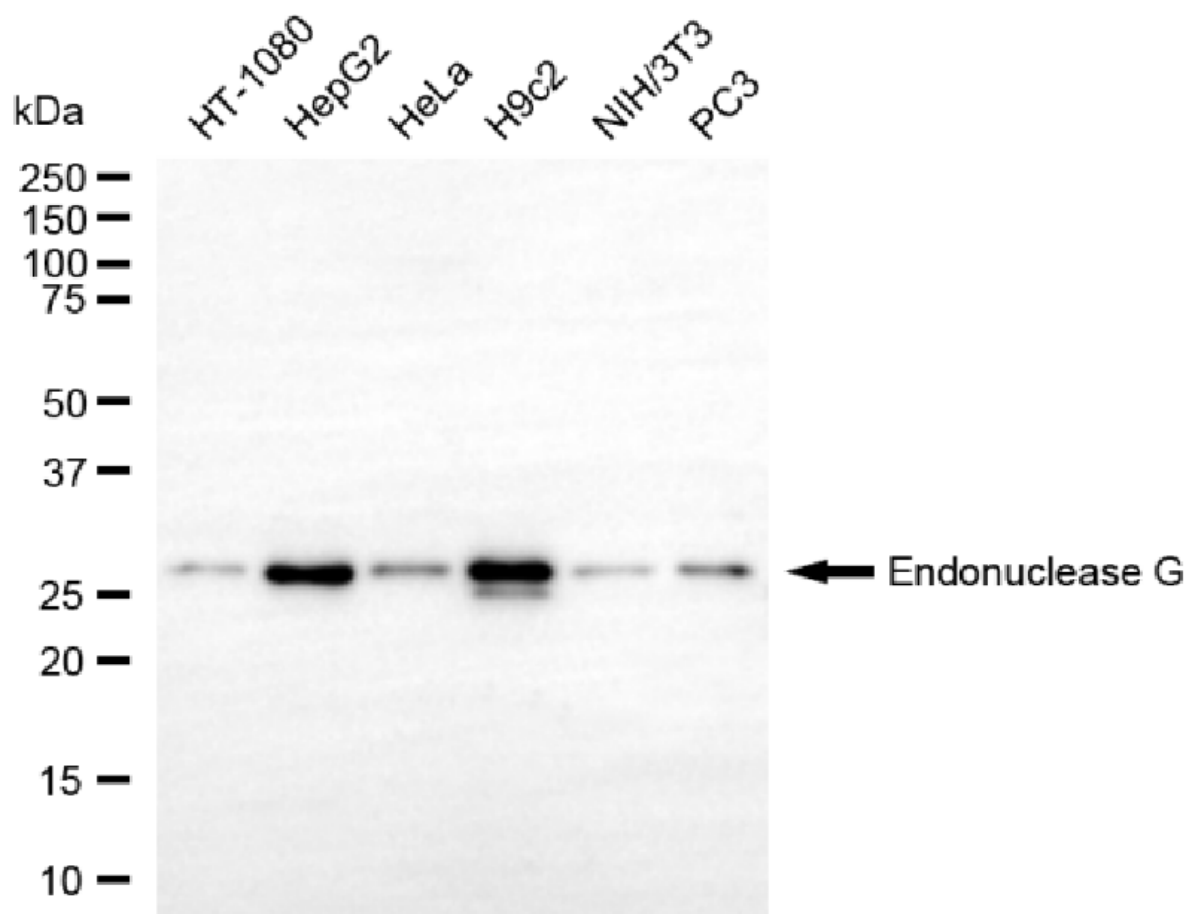
#### ORDERS

SALES@GENUINBIOTECH.COM  
FAX: +1-540-855-7041

[WWW.GENUINBIOTECH.COM](http://WWW.GENUINBIOTECH.COM)

## KO-Validated Anti-Endonuclease G Recombinant Rabbit Monoclonal Antibody

PAGE 3



Copyright ©2025 Genuin Biotechnologies LLC

Western blotting analysis using anti-endonuclease G antibody (Cat#71216). Total cell lysates (30  $\mu$ g) from various cell lines were loaded and separated by SDS-PAGE. The blot was incubated with anti-endonuclease G antibody (Cat#71216, 1:5,000) and HRP-conjugated goat anti-rabbit secondary antibody (Cat#201, 1:20,000) respectively. Image was developed using FeQ™ ECL Substrate Kit (Cat#226).

### SUPPORT

SUPPORT@GENUINBIOTECH.COM  
TEL: +1-540-855-7041

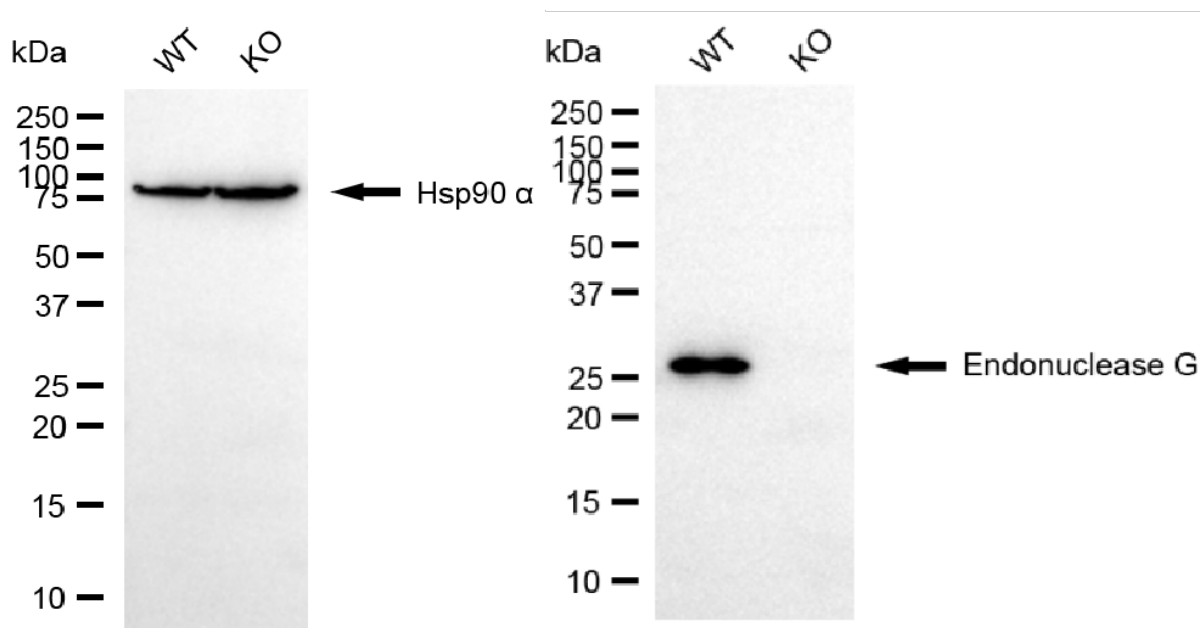
### ORDERS

SALES@GENUINBIOTECH.COM  
FAX: +1-540-855-7041

[WWW.GENUINBIOTECH.COM](http://WWW.GENUINBIOTECH.COM)

## KO-Validated Anti-Endonuclease G Recombinant Rabbit Monoclonal Antibody

PAGE 4



Copyright ©2025 Genuin Biotechnologies LLC

Western blotting analysis using anti-endonuclease G antibody (Cat#71216). Endonuclease G expression in wild type (WT) and endonuclease G (ENDOG) knockout (KO) HSHC cells with 20 µg of total cell lysates. Hsp90 α serves as a loading control. The blot was incubated with anti-endonuclease G antibody (Cat#71216, 1:5,000) and HRP-conjugated goat anti-rabbit secondary antibody (Cat#201, 1:20,000) respectively. Image was developed using FeQ™ ECL Substrate Kit (Cat#226).

### SUPPORT

SUPPORT@GENUINBIOTECH.COM  
TEL: +1-540-855-7041

### ORDERS

SALES@GENUINBIOTECH.COM  
FAX: +1-540-855-7041

[WWW.GENUINBIOTECH.COM](http://WWW.GENUINBIOTECH.COM)