

KO-Validated Anti-PMS2 Recombinant Rabbit Monoclonal Antibody



Catalog #: 71221

Aliases

PMS2; PMS1 Homolog 2, Mismatch Repair System Component; HNPCC4; PMS-2; PMSL2; MLH4; PMS1 Homolog 2, Mismatch Repair Protein; Mismatch Repair Endonuclease PMS2; DNA Mismatch Repair Protein PMS2; PMS1 Protein Homolog 2; H_DJ0042M02.9; PMS2 Postmeiotic Segregation Increased 2 (S. Cerevisiae); Postmeiotic Segregation Increased (S. Cerevisiae) 2; PMS2 Postmeiotic Segregation Increased 2; EC 3.1.-.-; LYNCH4; MMRCS4; PMS2CL

Background

Gene Name: PMS2

NCBI Gene Entry: [5395](#)

UniProt Entry: [P54278](#)

Application Information

Molecular Weight: Predicted, 96 kDa; observed, 110 kDa

Clonality: Rabbit monoclonal antibody

Clone ID: 25GB3205

Species Reactivity: Human

Applications Tested: Western blotting (WB), flow cytometry (FCM), immunocytochemistry (IC)

Immunogen

A synthesized peptide derived from human PMS2

Isotype

Rabbit IgG

Storage Buffer

Supplied in PBS (pH 7.4) containing 50% glycerol, and 0.02% sodium azide.

Storage

Store at -20 °C for one year.

Recommended Dilutions

Western blotting (WB): 1:1,000-1:5,000

Flow Cytometry (FCM): 1:2,000

Immunocytochemistry (IC): 1:100-1:1,000

SUPPORT

SUPPORT@GENUINBIOTECH.COM
TEL: +1-540-855-7041

ORDERS

SALES@GENUINBIOTECH.COM
FAX: +1-540-855-7041

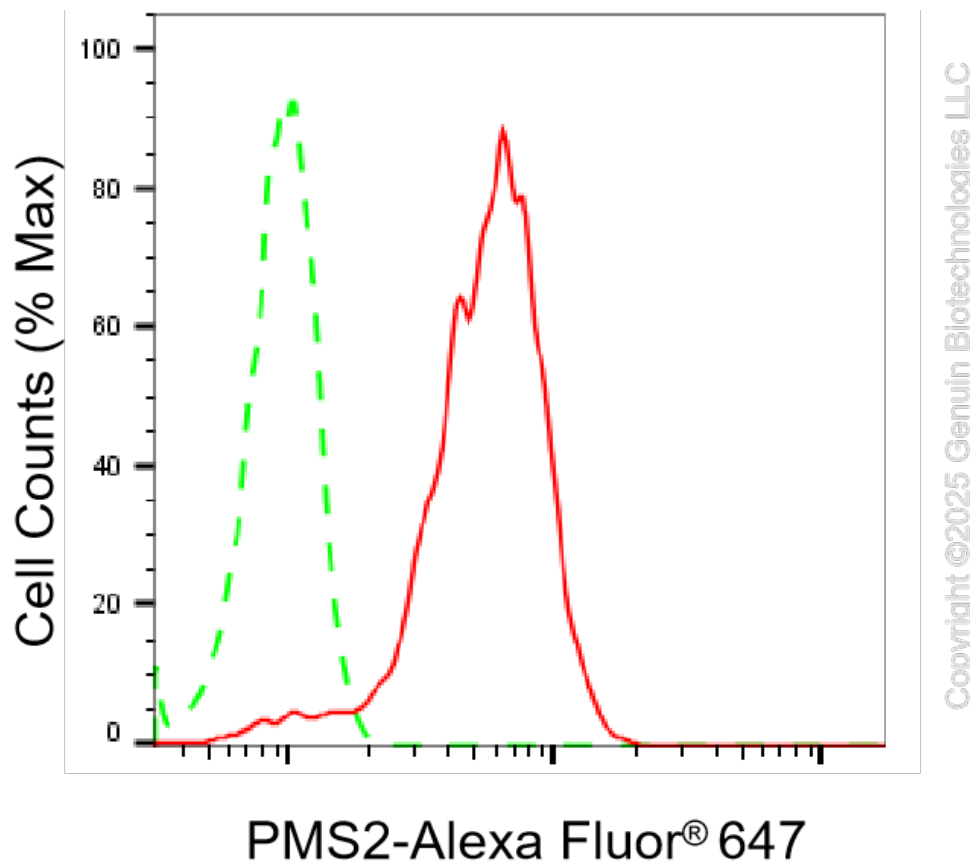
WWW.GENUINBIOTECH.COM

KO-Validated Anti-PMS2 Recombinant Rabbit Monoclonal Antibody

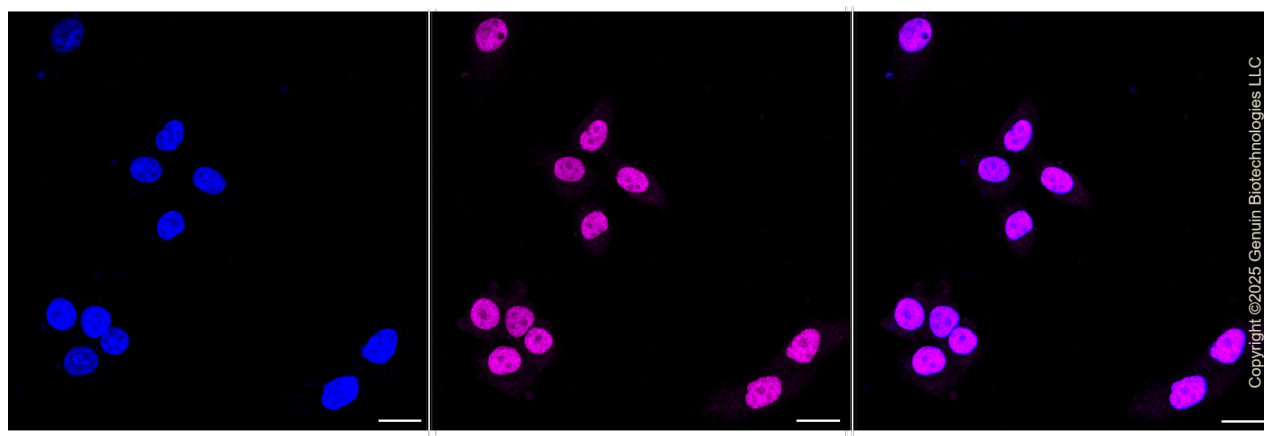
PAGE 2

Note: This product is for research use only.

Validation Data



Flow cytometric analysis of PMS2 expression in HepG2 cells using anti-PMS2 antibody (Cat#71221, 1:2,000). Green, isotype control; red, PMS2.



Immunocytochemical staining of HepG2 cells with anti-PMS2 antibody (Cat#71221, 1:1,000). Nuclei were stained blue with DAPI; PMS2 was stained magenta with Alexa Fluor® 647. Images were taken using Leica stellaris 5. Protein abundance based on laser Intensity and smart gain:

SUPPORT

SUPPORT@GENUINBIOTECH.COM
TEL: +1-540-855-7041

ORDERS

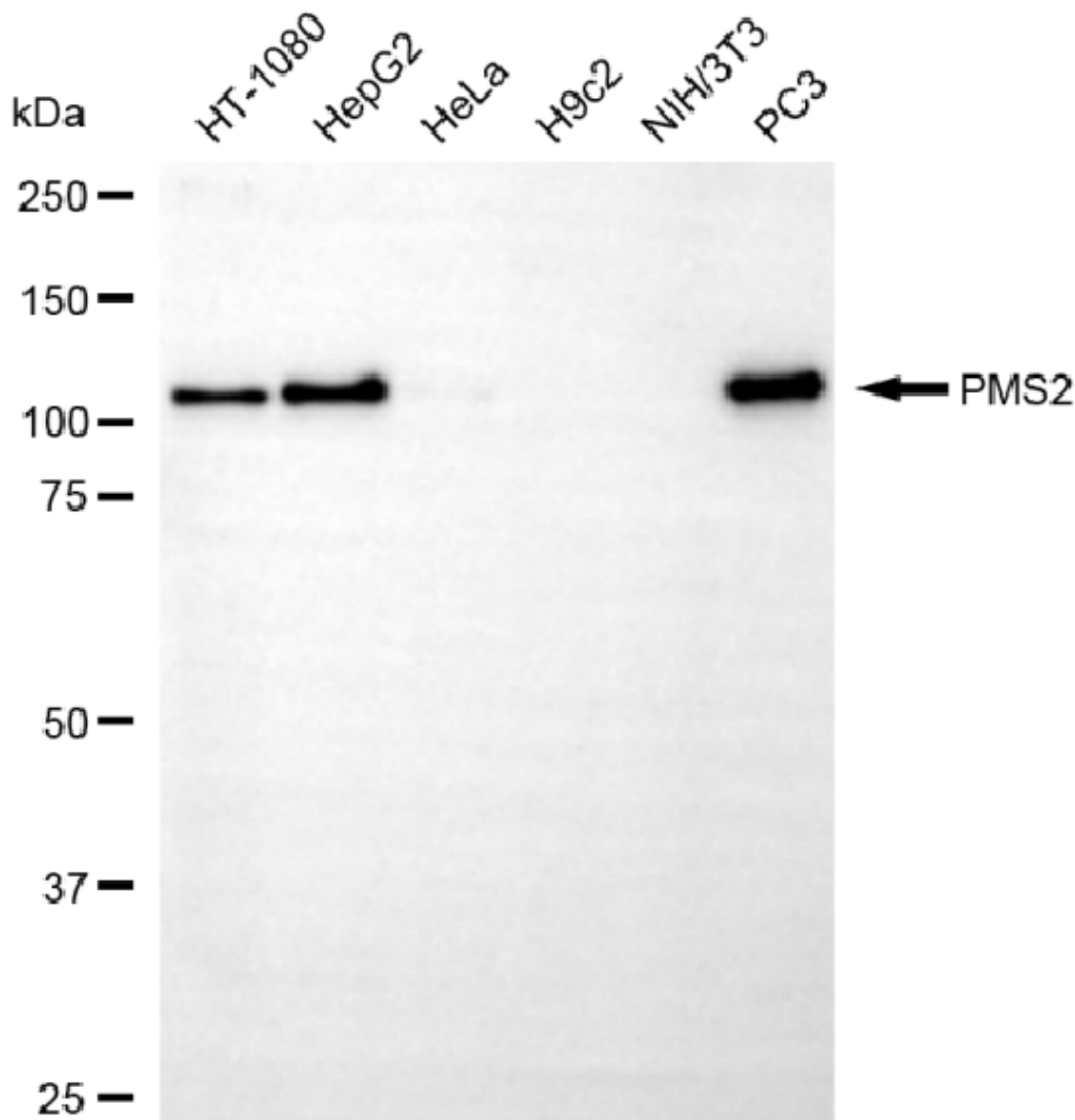
SALES@GENUINBIOTECH.COM
FAX: +1-540-855-7041

WWW.GENUINBIOTECH.COM

KO-Validated Anti-PMS2 Recombinant Rabbit Monoclonal Antibody

PAGE 3

Medium. Scale bar, 20 μ m.



Copyright ©2025 Genuin Biotechnologies LLC

Western blotting analysis using anti-PMS2 antibody (Cat#71221). Total cell lysates (30 μ g) from various cell lines were loaded and separated by SDS-PAGE. The blot was incubated with anti-PMS2 antibody (Cat#71221, 1:5,000) and HRP-conjugated goat anti-rabbit secondary antibody (Cat#201, 1:20,000) respectively. Image was developed using NaQTM ECL Substrate Kit (Cat#716).

SUPPORT

SUPPORT@GENUINBIOTECH.COM
TEL: +1-540-855-7041

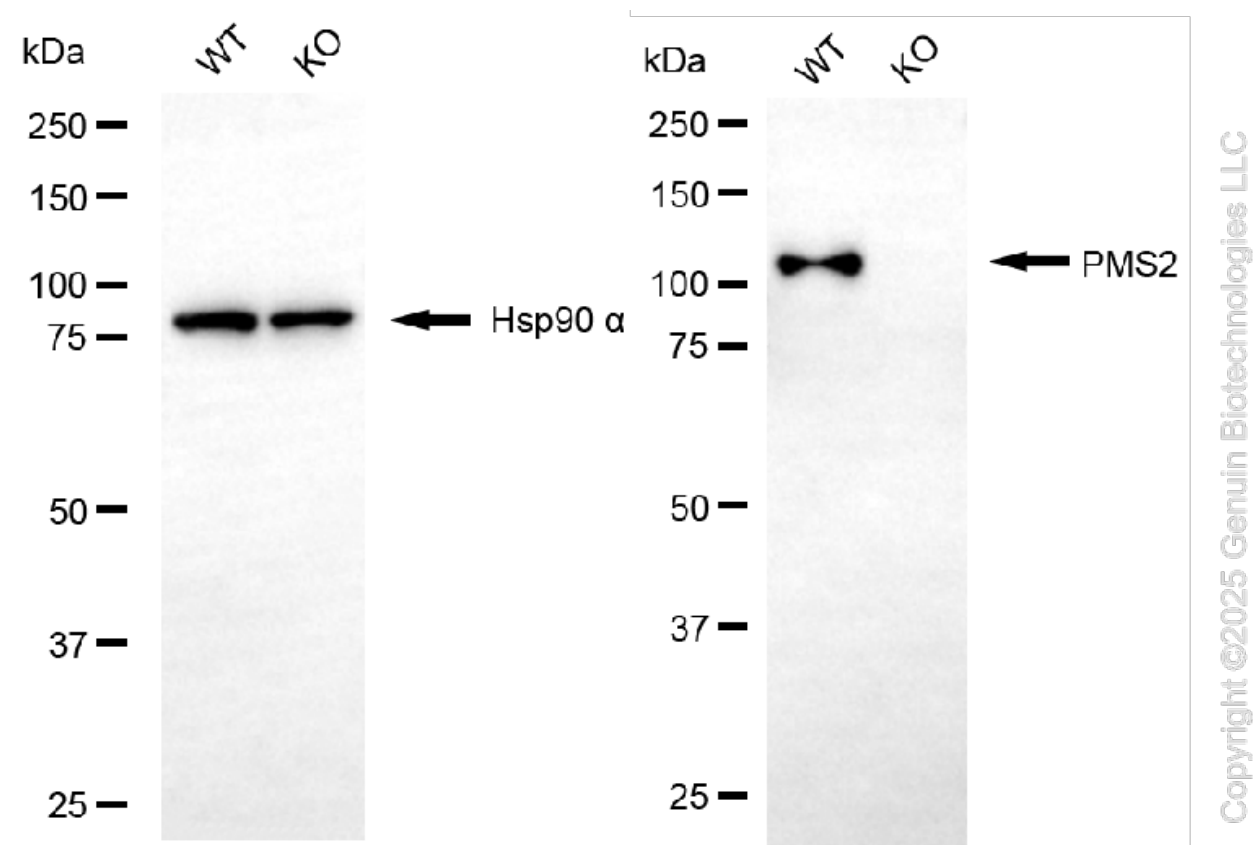
ORDERS

SALES@GENUINBIOTECH.COM
FAX: +1-540-855-7041

WWW.GENUINBIOTECH.COM

KO-Validated Anti-PMS2 Recombinant Rabbit Monoclonal Antibody

PAGE 4



Western blotting analysis using anti-PMS2 antibody (Cat#71221). PMS2 expression in wild-type (WT) and PMS2 knockout (KO) HT-1080 cells with 20 μ g of total cell lysates. Hsp90 α serves as a loading control. The blot was incubated with anti-PMS2 antibody (Cat#71221, 1:5,000) and HRP-conjugated goat anti-rabbit secondary antibody (Cat#201, 1:20,000) respectively. Image was developed using NaQ™ ECL Substrate Kit (Cat#716).

SUPPORT

SUPPORT@GENUINBIOTECH.COM
TEL: +1-540-855-7041

ORDERS

SALES@GENUINBIOTECH.COM
FAX: +1-540-855-7041

WWW.GENUINBIOTECH.COM