

# KO-Validated Anti-Phospho-Smad3 (S423 + S425) Recombinant Rabbit Monoclonal



**Catalog #: 71222**

## Aliases

SMAD3; SMAD Family Member 3; JV15-2; HsT17436; MADH3; Mothers Against Decapentaplegic Homolog 3; Mothers Against DPP Homolog 3; MAD Homolog 3; HMAD-3; HSMAD3; Mad3; MAD, Mothers Against Decapentaplegic Homolog 3 (Drosophila); SMAD, Mothers Against DPP Homolog 3 (Drosophila); MAD, Mothers Against Decapentaplegic Homolog 3; SMAD, Mothers Against DPP Homolog 3; SMA- And MAD-Related Protein 3; Mad Protein Homolog; Mad Homolog JV15-2; HSPC193; SMAD 3; LDS1C; Smad3; LDS3

## Background

Gene Name: SMAD3

NCBI Gene Entry: [4088](#)

UniProt Entry: [P84022](#)

## Application Information

Molecular Weight: Predicted, 61 kDa, observed, 60 kDa

Clonality: Rabbit monoclonal antibody

Clone ID: 25GB3215

Species Reactivity: Human, mouse, rat

Applications Tested: Western blotting (WB), flow cytometry (FCM)

## Immunogen

A synthesized peptide derived from human Phospho-Smad3 (S423 + S425)

## Isotype

Rabbit IgG

## Storage Buffer

Supplied in PBS (pH 7.4) containing 50% glycerol, and 0.02% sodium azide.

## Storage

Store at -20 °C for one year.

## Recommended Dilutions

Western blotting (WB): 1:1,000-1:5,000

Flow Cytometry (FCM): 1:2,000

---

### SUPPORT

SUPPORT@GENUINBIOTECH.COM  
TEL: +1-540-855-7041

### ORDERS

SALES@GENUINBIOTECH.COM  
FAX: +1-540-855-7041

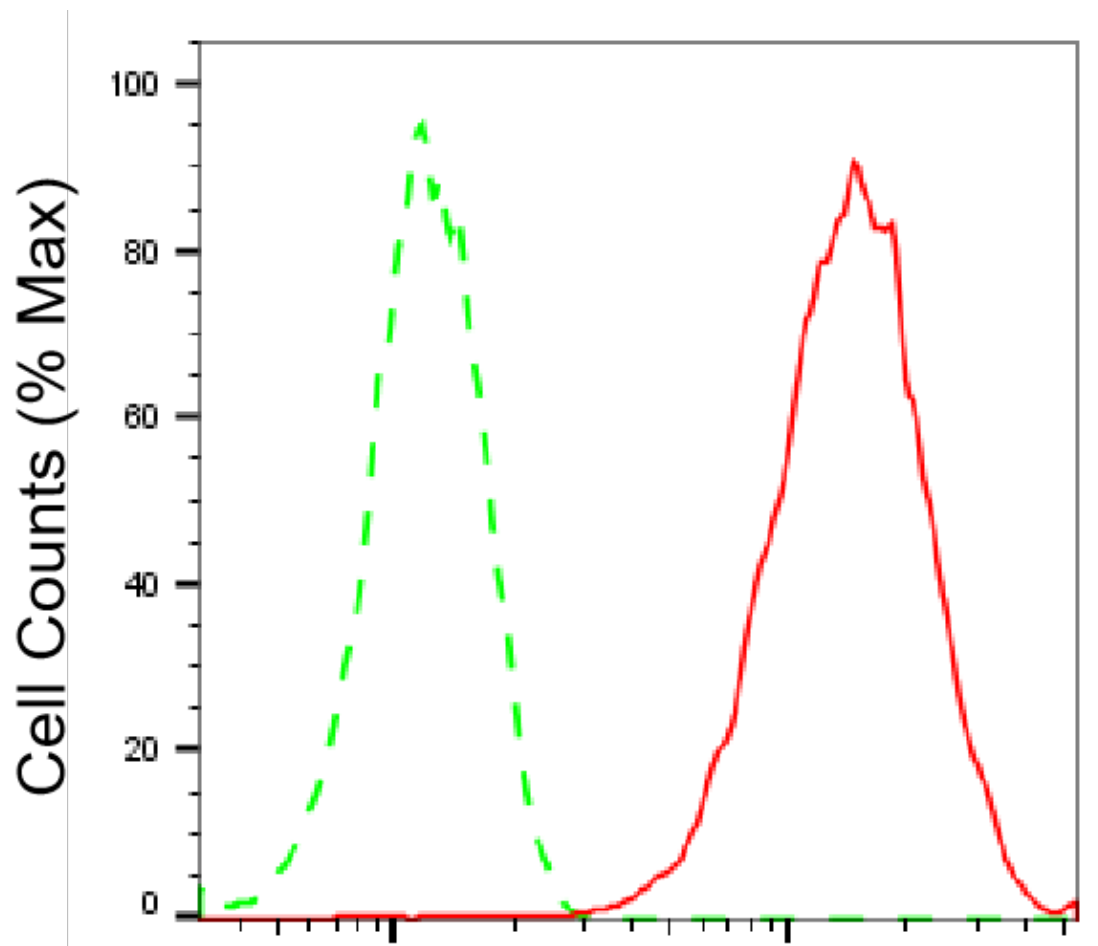
[WWW.GENUINBIOTECH.COM](http://WWW.GENUINBIOTECH.COM)

## KO-Validated Anti-Phospho-Smad3 (S423 + S425) Recombinant Rabbit Monoclonal

PAGE 2

**Note:** This product is for research use only.

### Validation Data



### Phospho-Smad3 (S423 + S425)- Alexa Fluor® 647

Flow cytometric analysis of Phospho-Smad3 (S423 + S425) expression in HAP-1 cells using anti-Phospho-Smad3 (S423 + S425) antibody (Cat#71222, 1:2,000). Green, isotype control; red, Phospho-Smad3 (S423 + S425).

#### SUPPORT

SUPPORT@GENUINBIOTECH.COM  
TEL: +1-540-855-7041

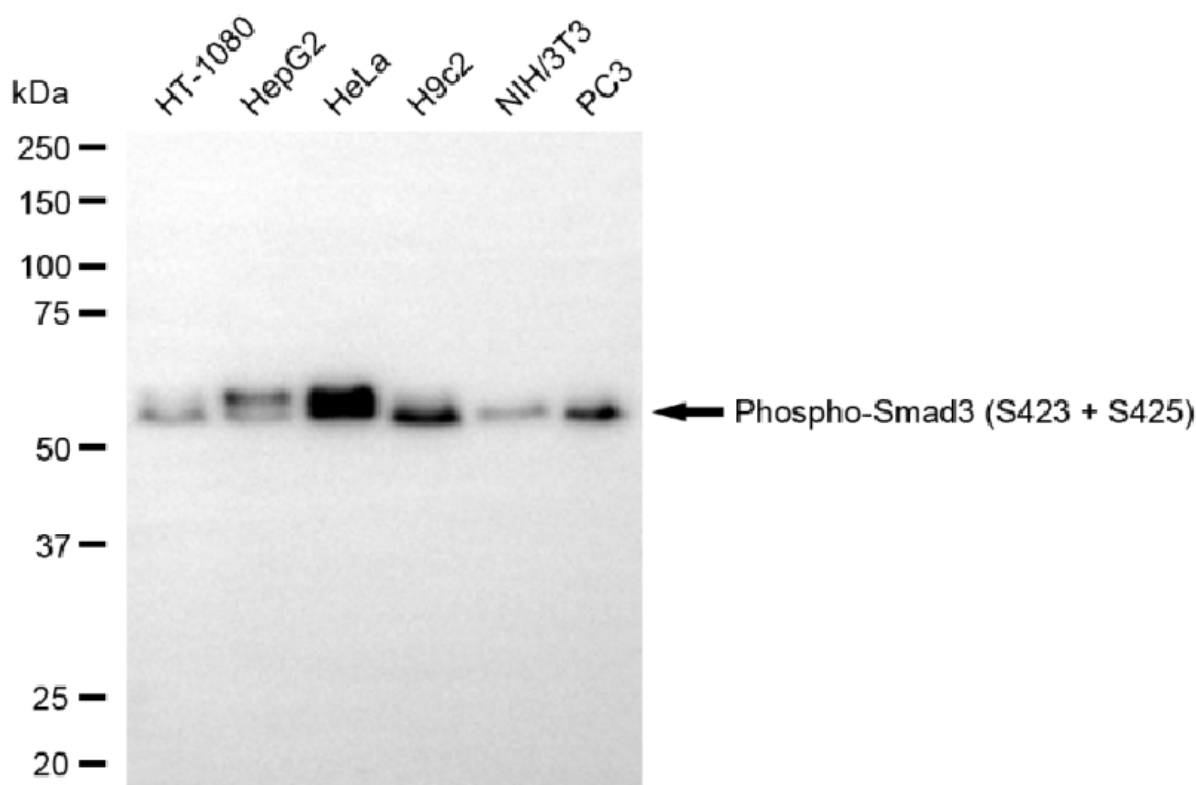
#### ORDERS

SALES@GENUINBIOTECH.COM  
FAX: +1-540-855-7041

[WWW.GENUINBIOTECH.COM](http://WWW.GENUINBIOTECH.COM)

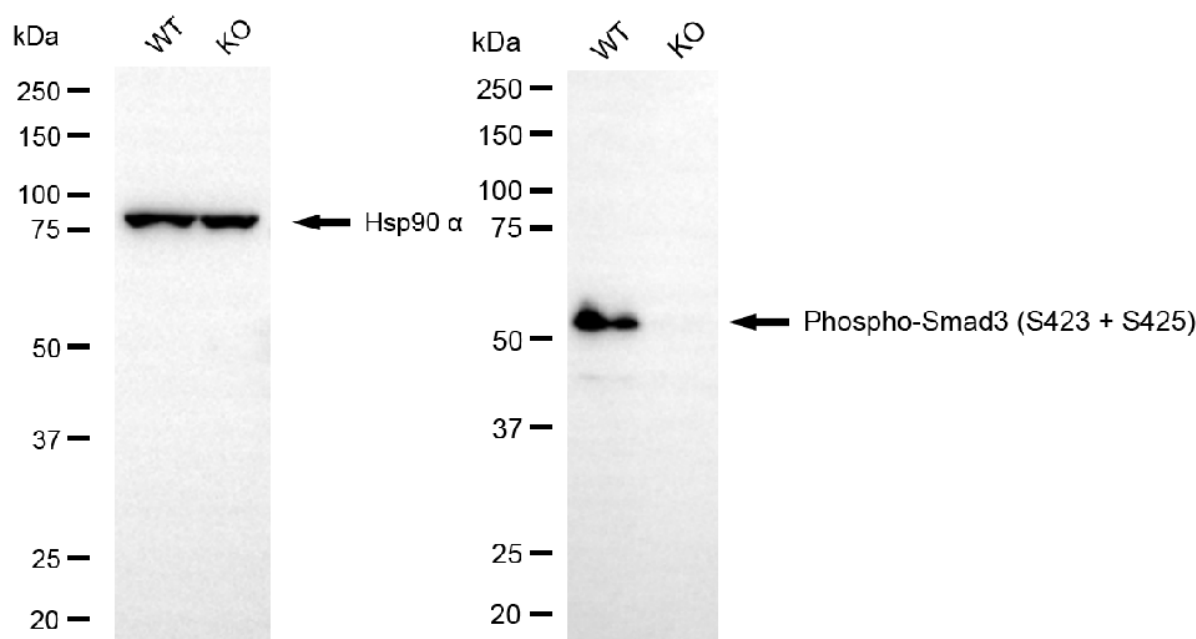
## KO-Validated Anti-Phospho-Smad3 (S423 + S425) Recombinant Rabbit Monoclonal

PAGE 3



Copyright ©2025 Genuin Biotechnologies LLC

Western blotting analysis using anti-phospho-Smad3 (S423 + S425) antibody (Cat#71222). Total cell lysates (30 µg) from various cell lines were loaded and separated by SDS-PAGE. The blot was incubated with anti-phospho-Smad3 (S423 + S425) antibody (Cat#71222, 1:5,000) and HRP-conjugated goat anti rabbit secondary antibody (Cat#201, 1:20,000) respectively. Image was developed using FeQ™ ECL Substrate Kit (Cat#226).



Copyright ©2025 Genuin Biotechnologies LLC

### SUPPORT

SUPPORT@GENUINBIOTECH.COM  
TEL: +1-540-855-7041

### ORDERS

SALES@GENUINBIOTECH.COM  
FAX: +1-540-855-7041

WWW.GENUINBIOTECH.COM

## **KO-Validated Anti-Phospho-Smad3 (S423 + S425) Recombinant Rabbit Monoclonal**

PAGE 4

Western blotting analysis using anti-phospho-smad3 (S423 + S425) antibody (Cat#71222). Phospho-smad3 (S423 + S425) expression in wild-type (WT) and SMAD3 knockout (KO) HSHC cells with 20 µg of total cell lysates. Hsp90  $\alpha$  serves as a loading control. The blot was incubated with anti-phospho-smad3 (S423 + S425) antibody (Cat#71222, 1:5,000) and HRP-conjugated goat anti-rabbit secondary antibody (Cat#201, 1:20,000) respectively. Image was developed using NaQ™ ECL Substrate Kit (Cat#716).

---

### **SUPPORT**

SUPPORT@GENUINBIOTECH.COM  
TEL: +1-540-855-7041

### **ORDERS**

SALES@GENUINBIOTECH.COM  
FAX: +1-540-855-7041

**WWW.GENUINBIOTECH.COM**