

KO-Validated Anti-YAP1 Recombinant Rabbit Monoclonal Antibody



Catalog #: 71223

Aliases

YAP1; Yes1 Associated Transcriptional Regulator; YAP65; YAP-1; Yes-Associated Protein YAP65 Homolog; Transcriptional Coactivator YAP1; Yes Associated Protein 1; Protein Yorkie Homolog; Yes-Associated Protein 1, 65kDa; 65 KDa Yes-Associated Protein; Yes-Associated Protein 2; Yes-Associated Protein 1; Yorkie Homolog; COB1; YAP2; YAP; YKI

Background

Gene Name: YAP1

NCBI Gene Entry: [10413](#)

UniProt Entry: [P46937](#)

Application Information

Molecular Weight: Predicted, 54 kDa, observed, 65 kDa

Clonality: Rabbit monoclonal antibody

Clone ID: 25GB3225

Species Reactivity: Human

Applications Tested: Western blotting (WB), flow cytometry (FCM), immunocytochemistry (IC)

Immunogen

A synthesized peptide derived from human YAP1

Isotype

Rabbit IgG

Storage Buffer

Supplied in PBS (pH 7.4) containing 50% glycerol, and 0.02% sodium azide.

Storage

Store at -20 °C for one year.

Recommended Dilutions

Western blotting (WB): 1:2,000-1:10,000

Flow Cytometry (FCM): 1:2,000

Immunocytochemistry (IC): 1:100-1:1,000

SUPPORT

SUPPORT@GENUINBIOTECH.COM
TEL: +1-540-855-7041

ORDERS

SALES@GENUINBIOTECH.COM
FAX: +1-540-855-7041

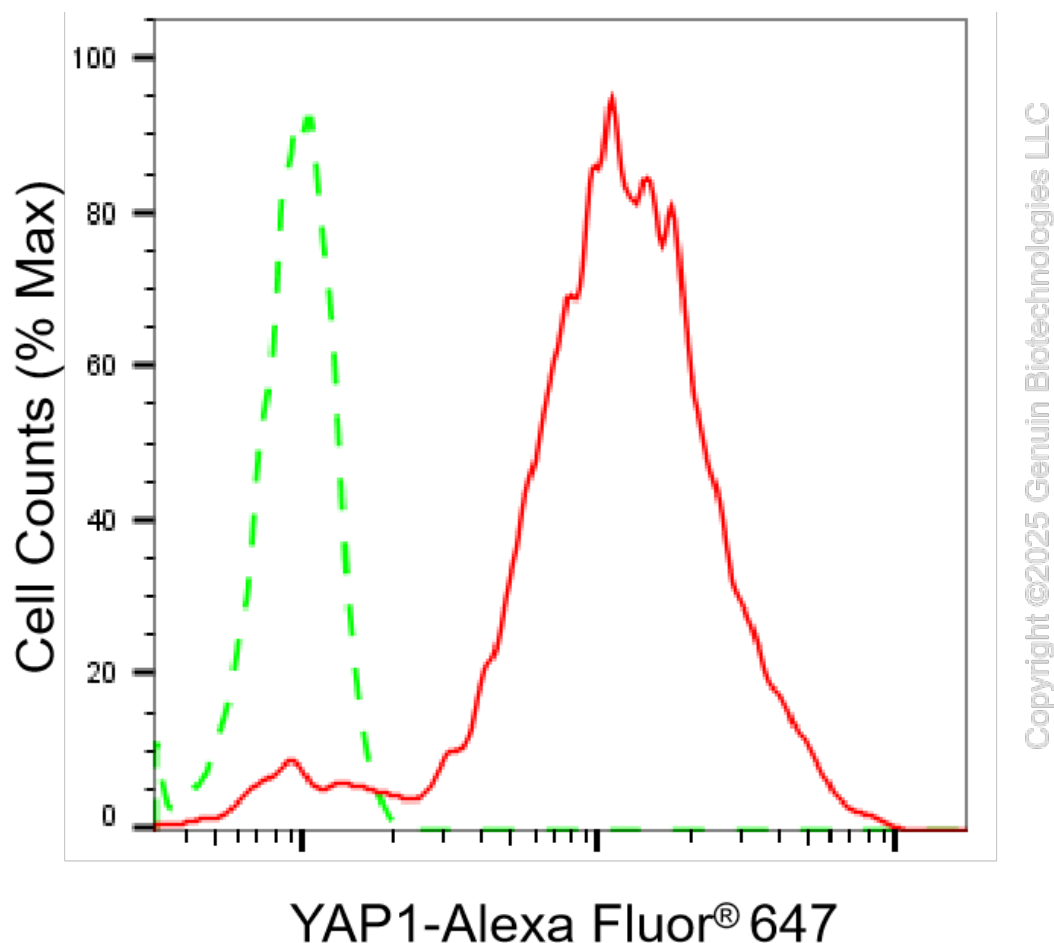
WWW.GENUINBIOTECH.COM

KO-Validated Anti-YAP1 Recombinant Rabbit Monoclonal Antibody

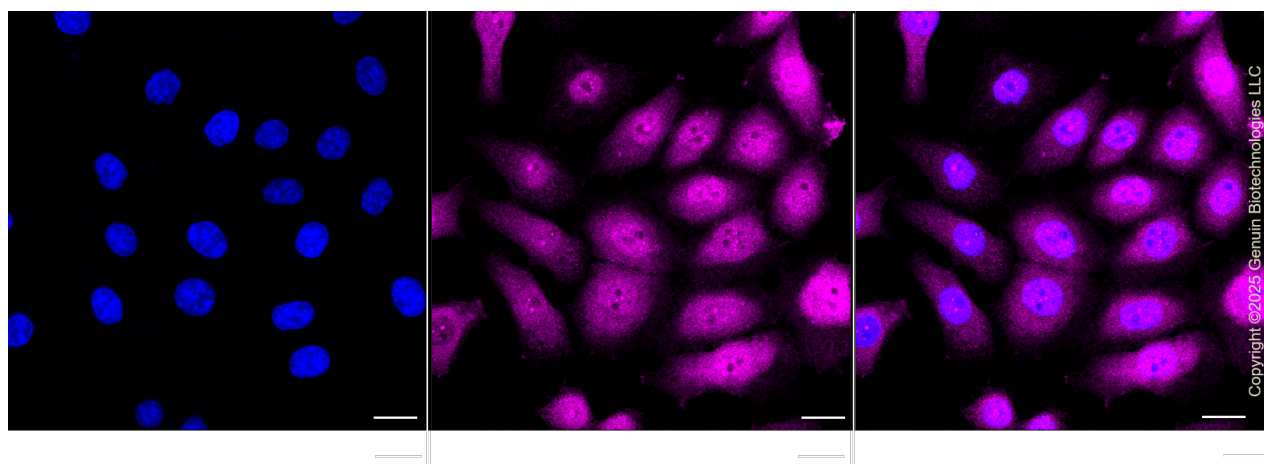
PAGE 2

Note: This product is for research use only.

Validation Data



Flow cytometric analysis of YAP1 expression in HepG2 cells using anti-YAP1 antibody (Cat#71223, 1:2,000). Green, isotype control; red, YAP1.



Immunocytochemical staining of HepG2 cells with YAP1 antibody (Cat#71223, 1:1,000). Nuclei

SUPPORT

SUPPORT@GENUINBIOTECH.COM
TEL: +1-540-855-7041

ORDERS

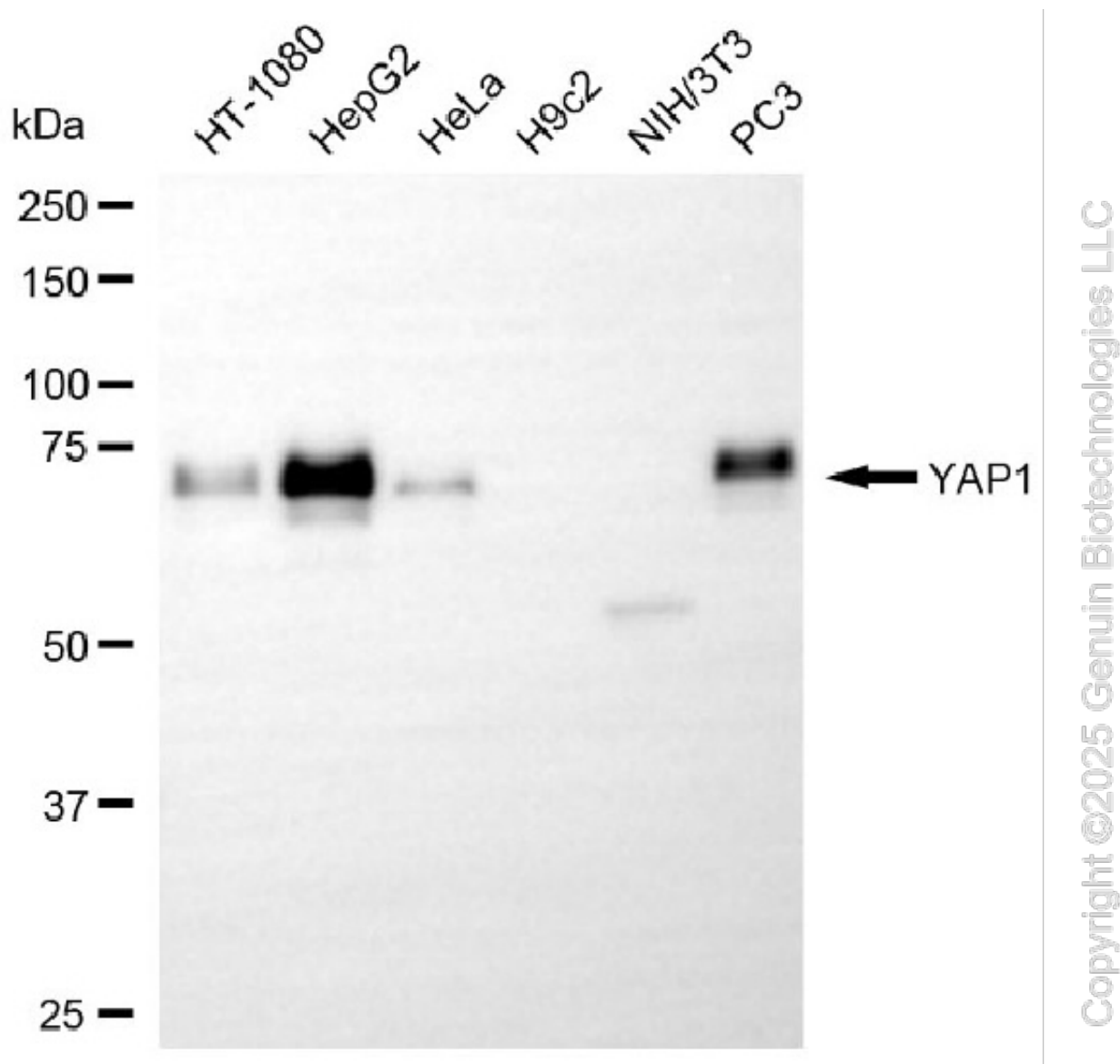
SALES@GENUINBIOTECH.COM
FAX: +1-540-855-7041

WWW.GENUINBIOTECH.COM

KO-Validated Anti-YAP1 Recombinant Rabbit Monoclonal Antibody

PAGE 3

were stained blue with DAPI; YAP1 was stained magenta with Alexa Fluor® 647. Images were taken using Leica stellaris 5. Protein abundance based on laser Intensity and smart gain: Medium. Scale bar, 20 μ m.



Western blotting analysis using anti-YAP1 antibody (Cat#71223). Total cell lysates (30 μ g) from various cell lines were loaded and separated by SDS-PAGE. The blot was incubated with anti-YAP1 antibody (Cat#71223, 1:10,000) and HRP-conjugated goat anti rabbit secondary antibody (Cat#201, 1:20,000) respectively. Image was developed using NaQ™ ECL Substrate Kit (Cat#716).

SUPPORT

SUPPORT@GENUINBIOTECH.COM
TEL: +1-540-855-7041

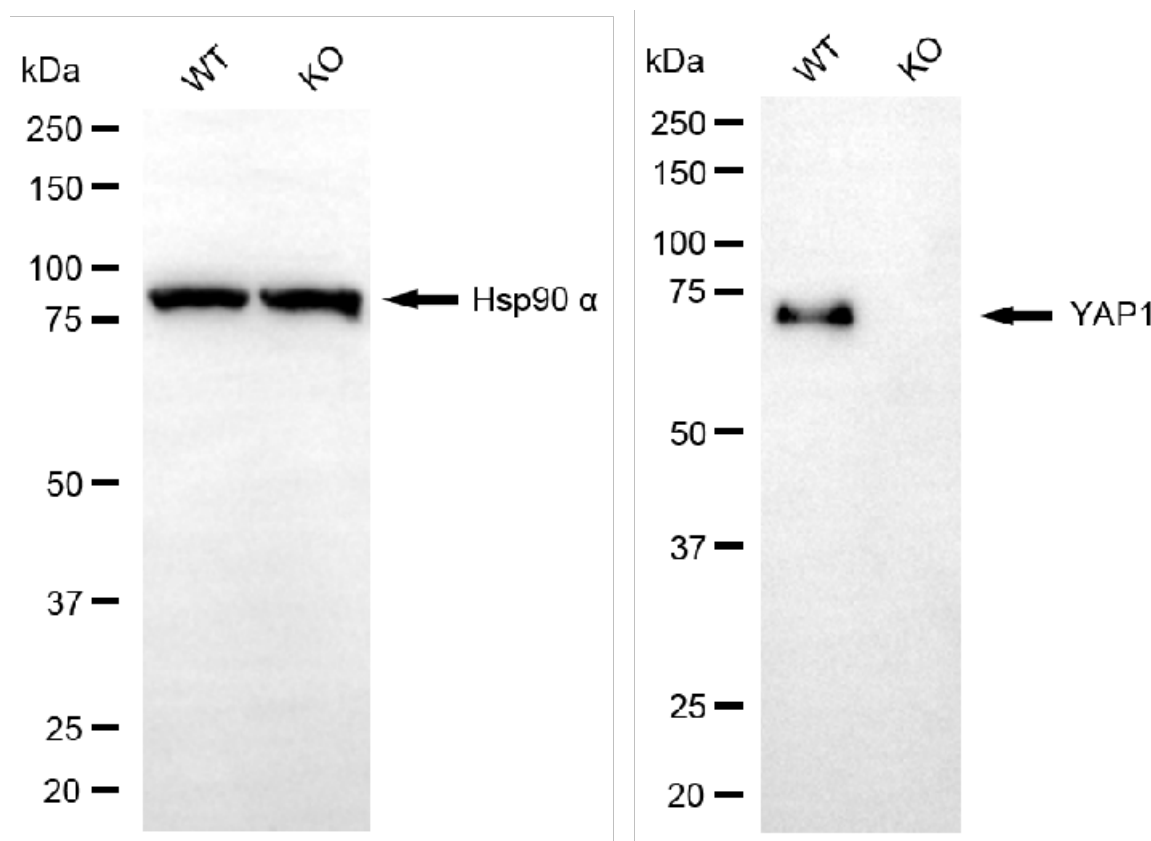
ORDERS

SALES@GENUINBIOTECH.COM
FAX: +1-540-855-7041

WWW.GENUINBIOTECH.COM

KO-Validated Anti-YAP1 Recombinant Rabbit Monoclonal Antibody

PAGE 4



Western blotting analysis using anti-YAP1 antibody (Cat#71223). YAP1 expression in wild type (WT) and YAP1 knockout (KO) HSHC cells with 40 µg of total cell lysates. Hsp90 α serves as a loading control. The blot was incubated with anti-YAP1 antibody (Cat#71223, 1:5,000) and HRP-conjugated goat anti-rabbit secondary antibody (Cat#201, 1:20,000) respectively. Image was developed using FeQ™ ECL Substrate Kit (Cat#226).

SUPPORT

SUPPORT@GENUINBIOTECH.COM
TEL: +1-540-855-7041

ORDERS

SALES@GENUINBIOTECH.COM
FAX: +1-540-855-7041

WWW.GENUINBIOTECH.COM