

KO-Validated Anti-SATB Homeobox 2 Recombinant Rabbit Monoclonal Antibody



Catalog #: 71231

Aliases

SATB2; SATB Homeobox 2; KIAA1034; Special AT-Rich Sequence-Binding Protein 2; DNA-Binding Protein SATB2; SATB Family Member 2; FLJ21474; SATB2 Fusion; C2DELq32q33; DEL2Q32Q33; GLSS

Background

Gene Name: SATB2

NCBI Gene Entry: [23314](#)

UniProt Entry: [Q9UPW6](#)

Application Information

Molecular Weight: Predicted, 83 kDa; observed, 83 kDa

Clonality: Rabbit monoclonal antibody

Clone ID: 25GB3370

Species Reactivity: Human

Applications Tested: Western blotting (WB), flow cytometry (FCM), immunohistochemistry (IHC)

Immunogen

A synthesized peptide derived from human SATB2

Isotype

Rabbit IgG

Storage Buffer

Supplied in PBS (pH 7.4) containing 50% glycerol, and 0.02% sodium azide.

Storage

Store at -20 °C for one year.

Recommended Dilutions

Western Blotting (WB): 1:1,000-1:5,000

Flow Cytometry (FCM): 1:2,000

Immunohistochemistry (IHC): 1:100-1:200

SUPPORT

SUPPORT@GENUINBIOTECH.COM
TEL: +1-540-855-7041

ORDERS

SALES@GENUINBIOTECH.COM
FAX: +1-540-855-7041

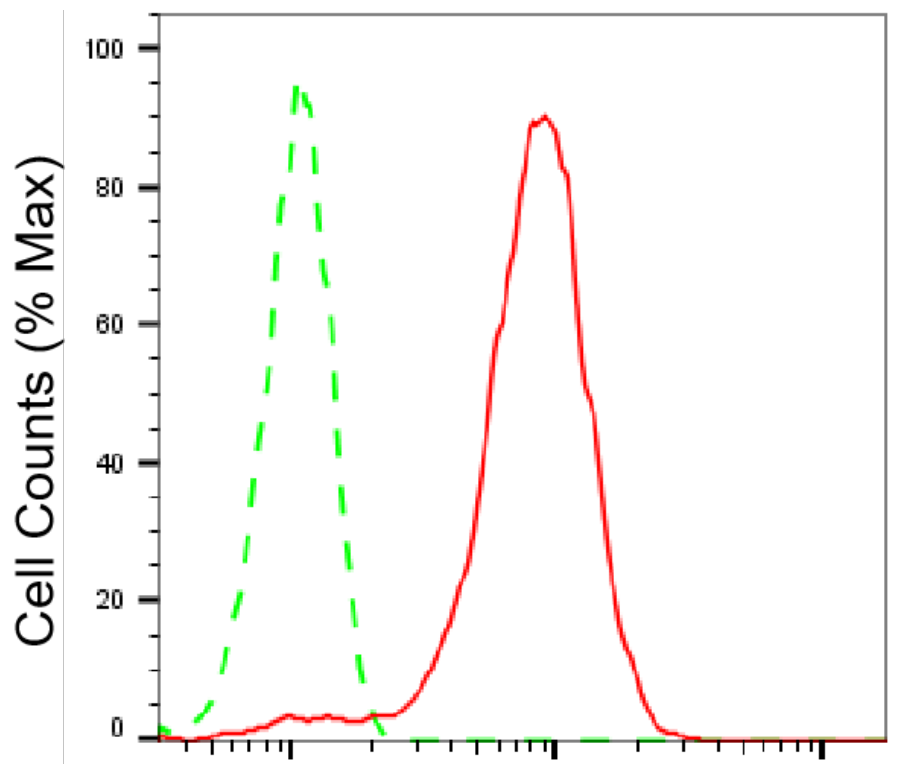
WWW.GENUINBIOTECH.COM

KO-Validated Anti-SATB Homeobox 2 Recombinant Rabbit Monoclonal Antibody

PAGE 2

Note: This product is for research use only.

Validation Data



Copyright ©2025 Genuin Biotechnologies LLC

SATB2-Alexa Fluor® 647

Flow cytometric analysis of SATB2 expression in HeLa cells using anti-SATB2 antibody (Cat#71231, 1:2,000). Green, isotype control; red, SATB2.

SUPPORT

SUPPORT@GENUINBIOTECH.COM
TEL: +1-540-855-7041

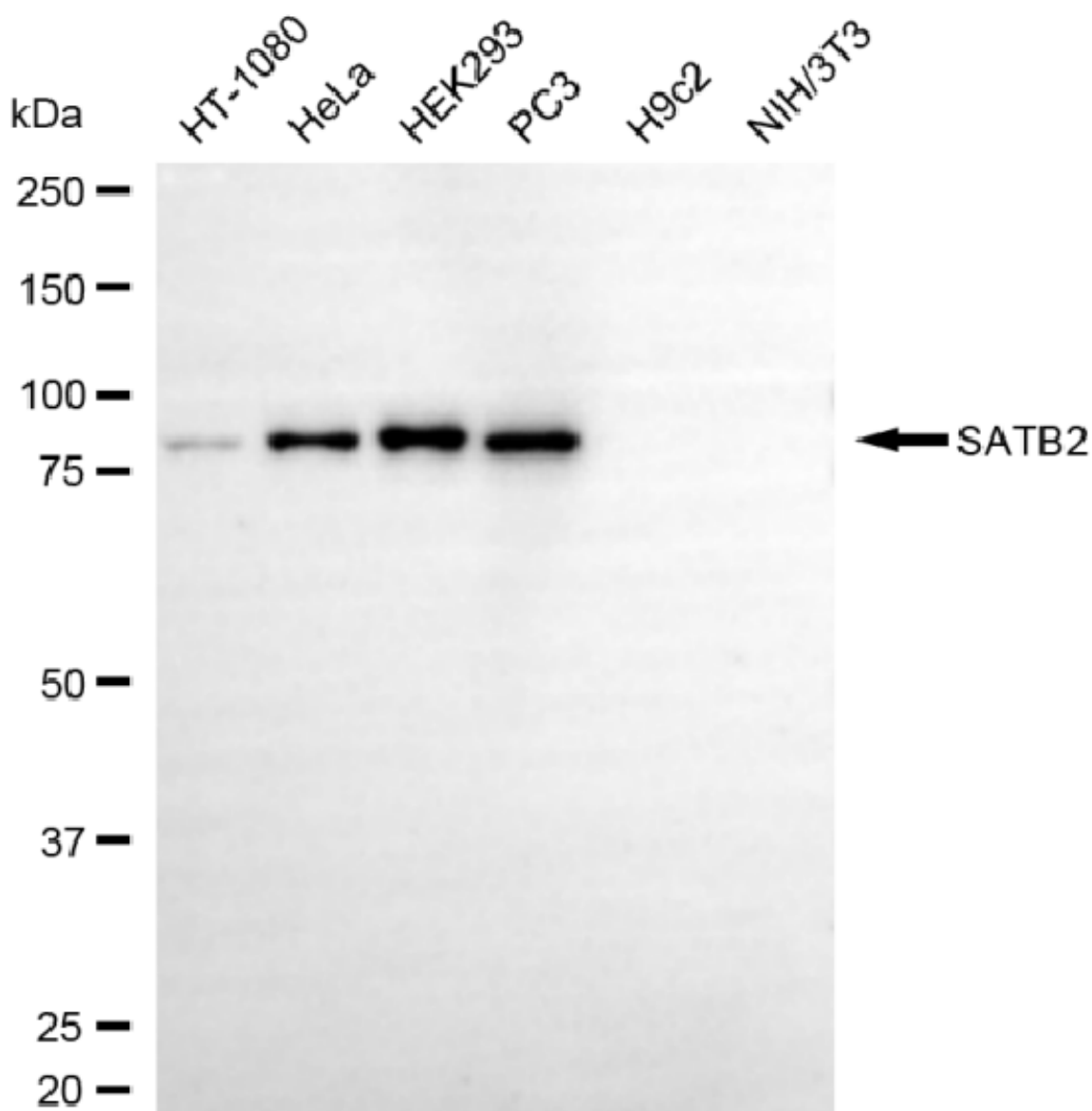
ORDERS

SALES@GENUINBIOTECH.COM
FAX: +1-540-855-7041

WWW.GENUINBIOTECH.COM

KO-Validated Anti-SATB Homeobox 2 Recombinant Rabbit Monoclonal Antibody

PAGE 3



Copyright ©2025 Genuin Biotechnologies LLC

Western blotting analysis using anti-SATB2 antibody (Cat#71231). Total cell lysates (30 µg) from various cell lines were loaded and separated by SDS-PAGE. The blot was incubated with anti-SATB2 antibody (Cat#71231, 1:5,000) and HRP-conjugated goat anti-rabbit secondary antibody (Cat#201, 1:20,000) respectively. Image was developed using FeQ™ ECL Substrate Kit (Cat#226).

SUPPORT

SUPPORT@GENUINBIOTECH.COM
TEL: +1-540-855-7041

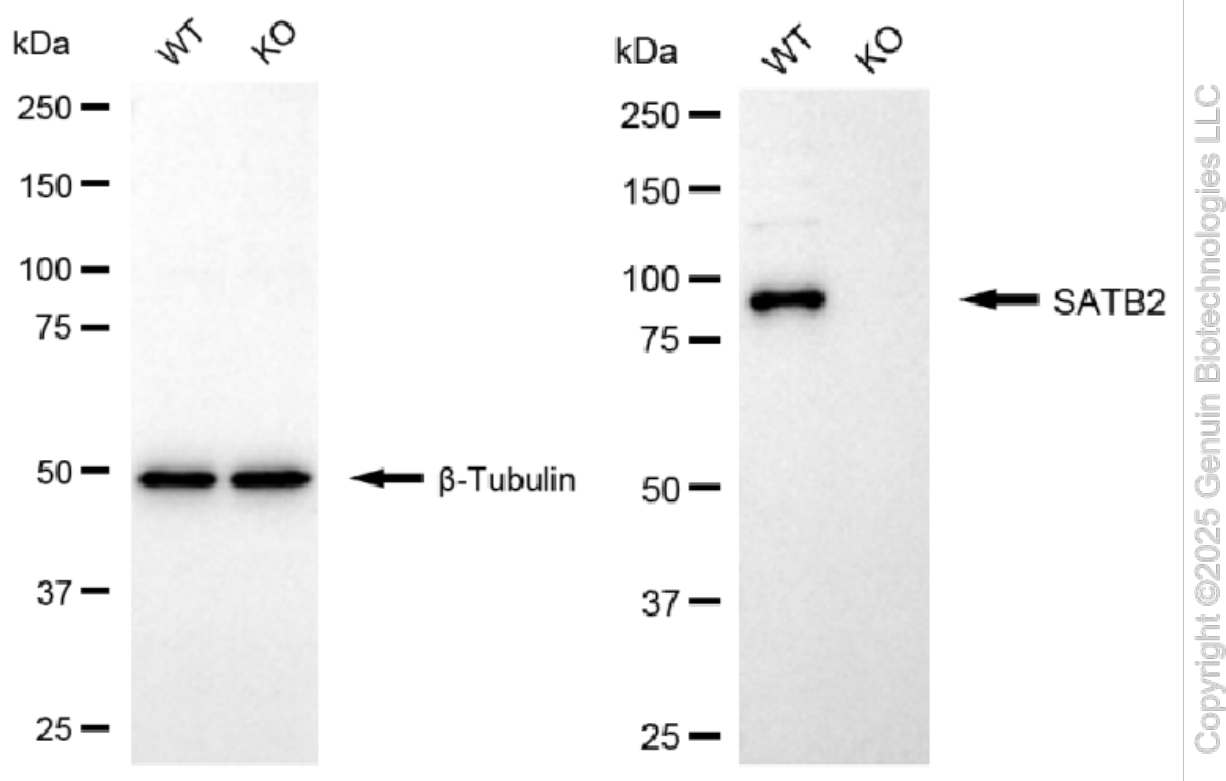
ORDERS

SALES@GENUINBIOTECH.COM
FAX: +1-540-855-7041

WWW.GENUINBIOTECH.COM

KO-Validated Anti-SATB Homeobox 2 Recombinant Rabbit Monoclonal Antibody

PAGE 4



Western blotting analysis using anti-SATB2 antibody (Cat#71231). SATB2 expression in wild-type (WT) and SATB2 knockout (KO) HeLa cells with 20 μ g of total cell lysates. β -Tubulin serves as a loading control. The blot was incubated with anti-SATB2 antibody (Cat#71231, 1:5,000) and HRP-conjugated goat anti-rabbit secondary antibody (Cat#201, 1:20,000) respectively. Image was developed using NaQTM ECL Substrate Kit (Cat#716).

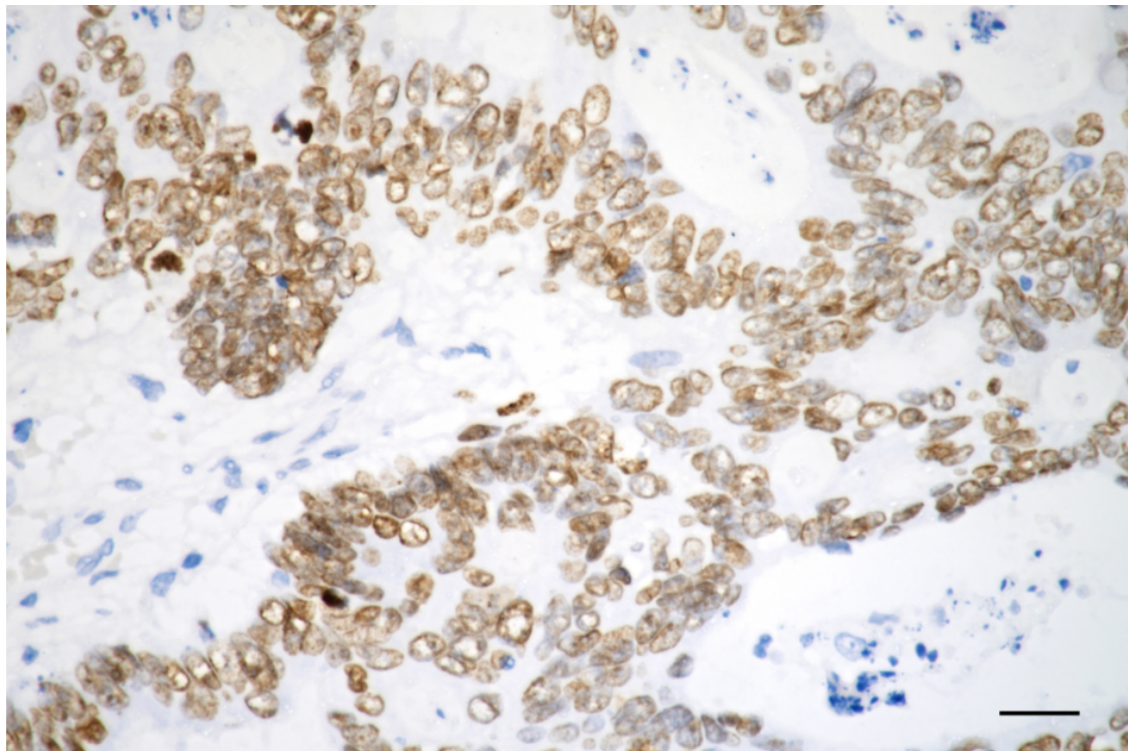
SUPPORT

SUPPORT@GENUINBIOTECH.COM
TEL: +1-540-855-7041

ORDERS

SALES@GENUINBIOTECH.COM
FAX: +1-540-855-7041

WWW.GENUINBIOTECH.COM



Copyright ©2025 Genuin Biotechnologies LLC

Immunohistochemistry was performed on paraffin-embedded human sigmoid colon carcinoma using anti-SATB2 antibody (Cat#71231, 1:200). Antigen retrieval was done in sodium citrate buffer (pH 6.0). DAB was used for detection, with hematoxylin counterstaining. Images were acquired using a Nikon Ci-L Plus microscope (40× objective). Scale bar: 25 µm.