

KO-Validated Anti-IFITM3 Recombinant Rabbit Monoclonal Antibody



Catalog #: 71232

Aliases

IFITM3; Interferon Induced Transmembrane Protein 3; DSPA2b; Dispanin Subfamily A Member 2b; 1-8U; Interferon-Induced Transmembrane Protein 3; Interferon-Inducible Protein 1-8U; Interferon Induced Transmembrane Protein 3 (1-8U); IP15

Background

Gene Name: IFITM3

NCBI Gene Entry: [10410](#)

UniProt Entry: [Q01628](#)

Application Information

Molecular Weight: Predicted, 15 kDa; observed, 17 kDa

Clonality: Rabbit monoclonal antibody

Clone ID: 25GB3410

Species Reactivity: Human, mouse

Applications Tested: Western blotting (WB), flow cytometry (FCM), immunocytochemistry (IC)

Immunogen

A synthesized peptide derived from human Fragilis

Isotype

Rabbit IgG

Storage Buffer

Supplied in PBS (pH 7.4) containing 50% glycerol, and 0.02% sodium azide.

Storage

Store at -20 °C for one year.

Recommended Dilutions

Western Blotting (WB): 1:1,000-1:5,000

Flow Cytometry (FCM): 1:2,000

Immunocytochemistry (IC): 1:100-1:1,000

Note: This product is for research use only.

SUPPORT

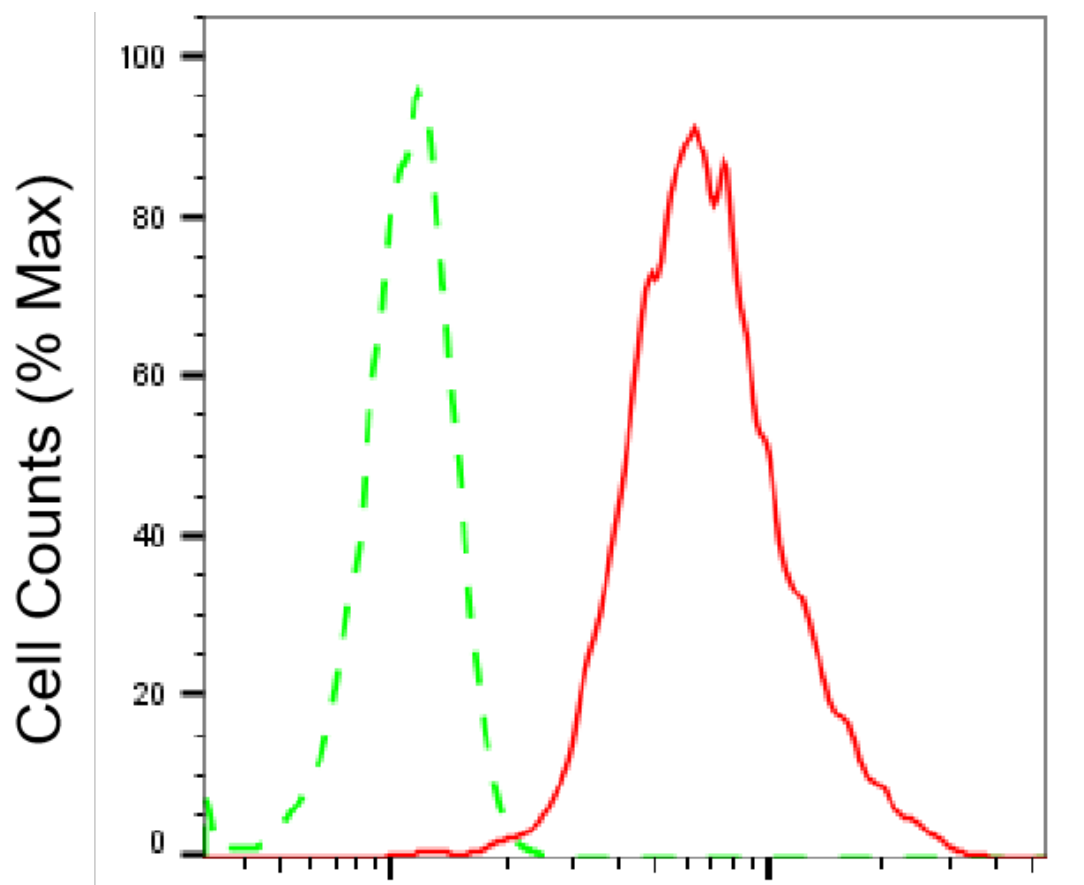
SUPPORT@GENUINBIOTECH.COM
TEL: +1-540-855-7041

ORDERS

SALES@GENUINBIOTECH.COM
FAX: +1-540-855-7041

WWW.GENUINBIOTECH.COM

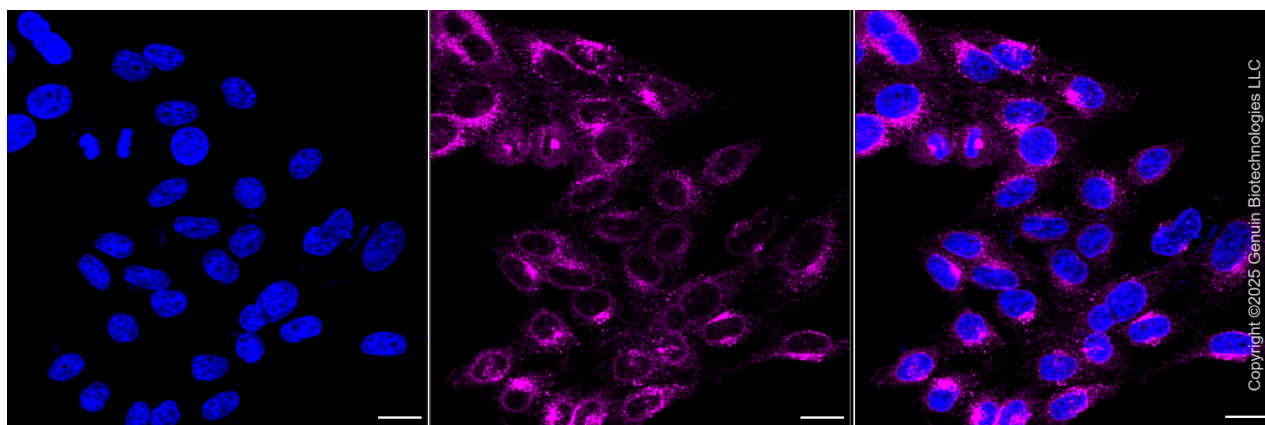
Validation Data



Copyright ©2025 Genuin Biotechnologies LLC

**Interferon induced transmembrane protein
3-Alexa Fluor® 647**

Flow cytometric analysis of Interferon induced transmembrane protein 3 expression in HepG2 cells using anti-Interferon induced transmembrane protein 3 antibody (Cat#71232, 1:2,000). Green, isotype control; red, Interferon induced transmembrane protein 3.



Copyright ©2025 Genuin Biotechnologies LLC

SUPPORT

SUPPORT@GENUINBIOTECH.COM
TEL: +1-540-855-7041

ORDERS

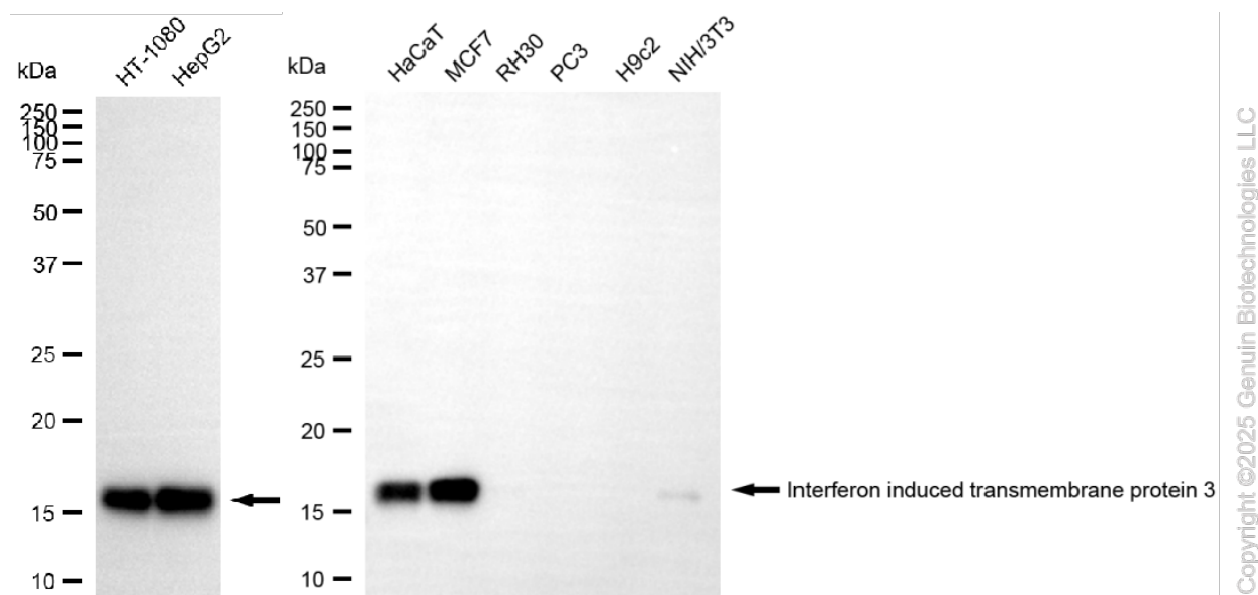
SALES@GENUINBIOTECH.COM
FAX: +1-540-855-7041

WWW.GENUINBIOTECH.COM

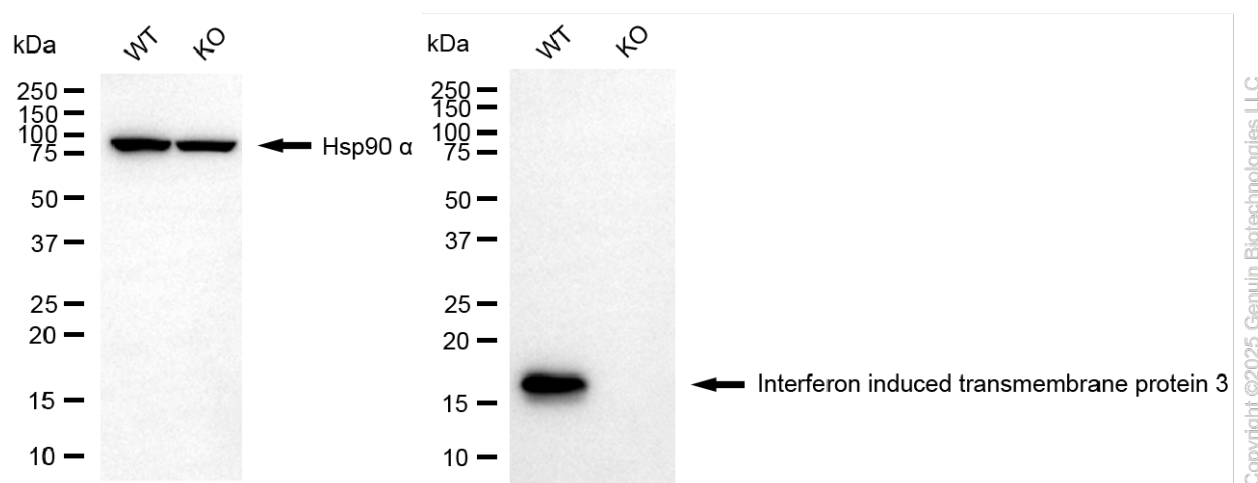
KO-Validated Anti-IFITM3 Recombinant Rabbit Monoclonal Antibody

PAGE 3

Immunocytochemical staining of HepG2 cells with anti-Interferon induced transmembrane protein 3 antibody (Cat#71232, 1:1,000). Nuclei were stained blue with DAPI; Interferon induced transmembrane protein 3 was stained magenta with Alexa Fluor® 647. Images were taken using Leica stellaris 5. Protein abundance based on laser Intensity and smart gain: Medium. Scale bar, 20 µm.



Western blotting analysis using anti-interferon induced transmembrane protein 3 antibody (Cat#71232). Total cell lysates (30 µg) from various cell lines were loaded and separated by SDS-PAGE. The blot was incubated with anti-interferon induced transmembrane protein 3 antibody (Cat#71232, 1:5,000) and HRP-conjugated goat anti-rabbit secondary antibody (Cat#201, 1:20,000) respectively. Image was developed using NaQ™ ECL Substrate Kit (Cat#716).



Western blotting analysis using anti-interferon induced transmembrane protein 3 antibody (Cat#71232). Interferon induced transmembrane protein 3 expression in wild-type (WT) and interferon induced transmembrane protein 3 (IFITM3) knockout (KO) HT-1080 cells with 20 µg

SUPPORT

SUPPORT@GENUINBIOTECH.COM
TEL: +1-540-855-7041

ORDERS

SALES@GENUINBIOTECH.COM
FAX: +1-540-855-7041

WWW.GENUINBIOTECH.COM

KO-Validated Anti-IFITM3 Recombinant Rabbit Monoclonal Antibody

PAGE 4

of total cell lysates. Hsp90 α serves as a loading control. The blot was incubated with anti-interferon induced transmembrane protein 3 antibody (Cat#71232, 1:5,000) and HRP-conjugated goat anti-rabbit secondary antibody (Cat#201, 1:20,000) respectively. Image was developed using NaQ™ ECL Substrate Kit (Cat#716).

SUPPORT

SUPPORT@GENUINBIOTECH.COM
TEL: +1-540-855-7041

ORDERS

SALES@GENUINBIOTECH.COM
FAX: +1-540-855-7041

WWW.GENUINBIOTECH.COM