

# KO-Validated Anti-ROCK1 Rabbit Monoclonal Antibody



**Catalog #: 71235**

## Aliases

ROCK1; Rho Associated Coiled-Coil Containing Protein Kinase 1; P160ROCK; Renal Carcinoma Antigen NY-REN-35; Rho-Associated Protein Kinase 1; P160 ROCK-1; EC 2.7.11.1; ROCK-I; Rho-Associated, Coiled-Coil-Containing Protein Kinase 1; Rho-Associated, Coiled-Coil-Containing Protein Kinase I; EC 2.7.11

## Background

Gene Name: ROCK1

NCBI Gene Entry: [6093](#)

UniProt Entry: [Q13464](#)

## Application Information

Molecular Weight: Predicted, 158 kDa, observed, 158 kDa

Clonality: Rabbit monoclonal antibody

Clone ID: 25GB3465

Species Reactivity: Human, mouse, rat

Applications Tested: Western blotting (WB), flow cytometry (FCM), immunocytochemistry (IC)

## Immunogen

A synthesized peptide derived from human ROCK1

## Isotype

Rabbit IgG

## Storage Buffer

Supplied in PBS (pH 7.4) containing 50% glycerol, and 0.02% sodium azide.

## Storage

Store at -20 °C for one year.

## Recommended Dilutions

Western blotting (WB): 1:1,000-1:5,000

Flow Cytometry (FCM): 1:2,000

Immunocytochemistry (IC): 1:100-1:1,000

---

### SUPPORT

SUPPORT@GENUINBIOTECH.COM  
TEL: +1-540-855-7041

### ORDERS

SALES@GENUINBIOTECH.COM  
FAX: +1-540-855-7041

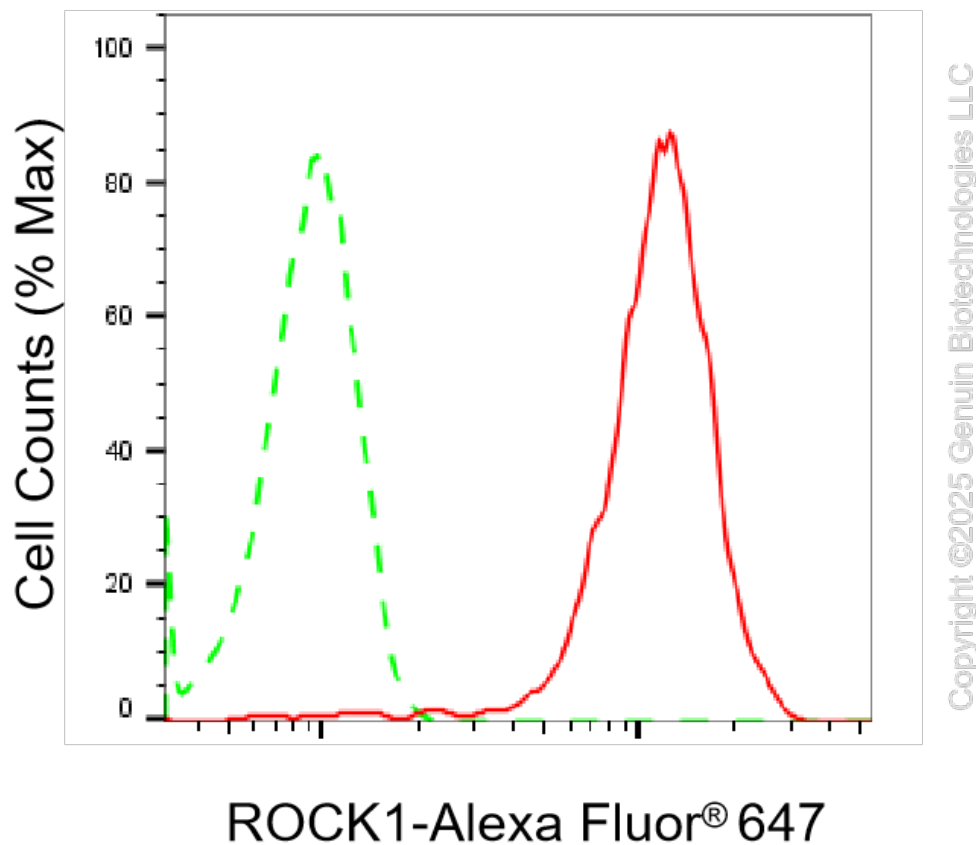
[WWW.GENUINBIOTECH.COM](http://WWW.GENUINBIOTECH.COM)

# KO-Validated Anti-ROCK1 Rabbit Monoclonal Antibody

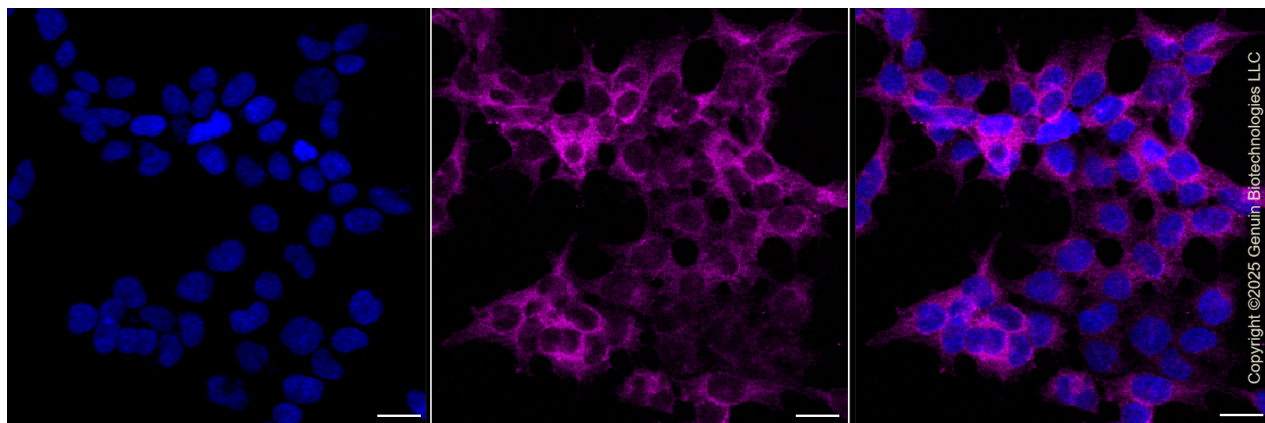
PAGE 2

**Note:** This product is for research use only.

## Validation Data



Flow cytometric analysis of ROCK1 expression in HeLa cells using anti-ROCK1 antibody (Cat#71235, 1:2,000). Green, isotype control; red, ROCK1.



Immunocytochemical staining of HeLa cells with anti-ROCK1 protein antibody (Cat#71235, 1:1000). Nuclei were stained blue with DAPI; ROCK1 was stained magenta with Alexa Fluor® 647. Images were taken using Leica stellaris 5. Protein abundance based on laser Intensity and smart gain: Medium. Scale bar, 20 µm.

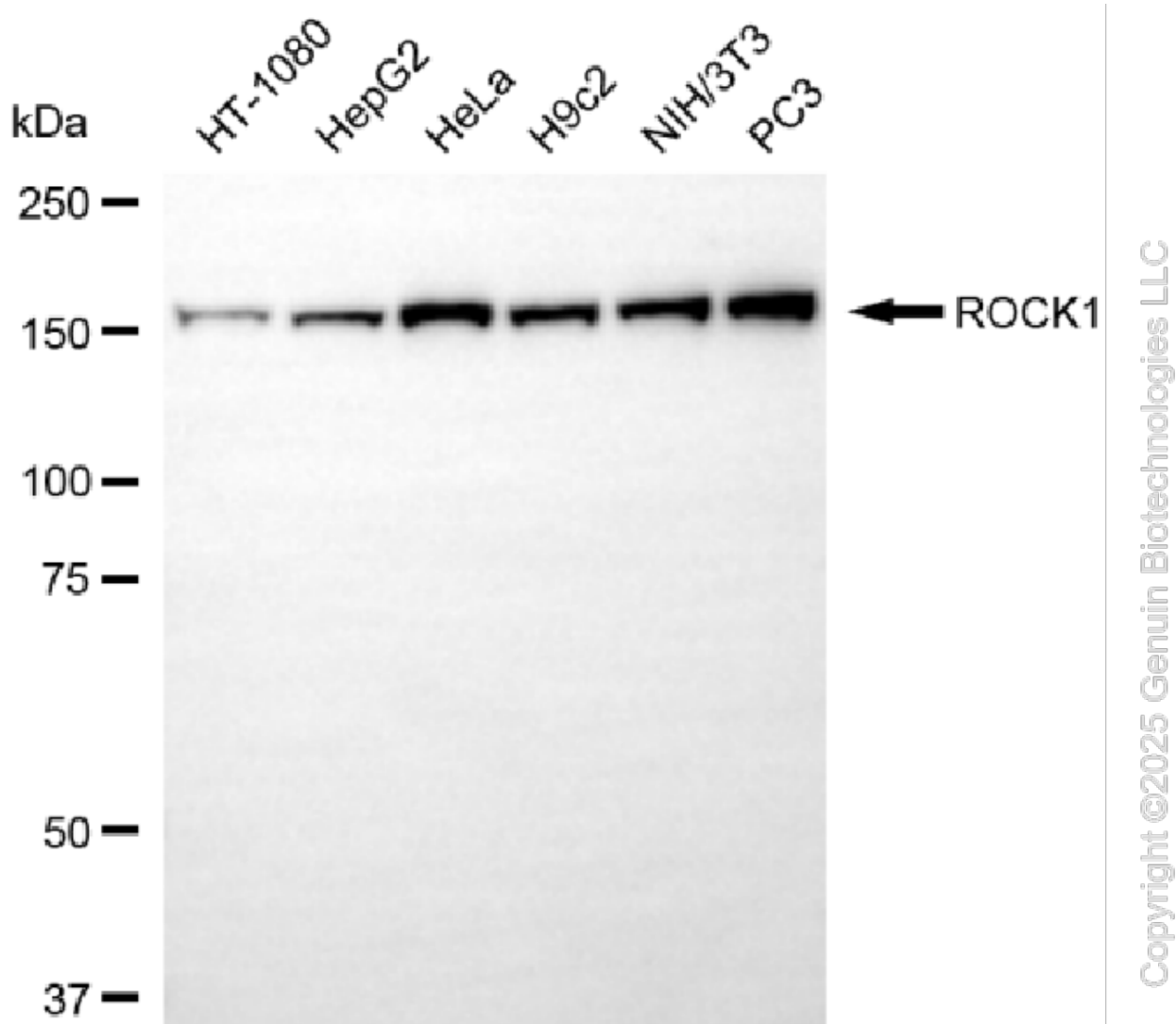
### SUPPORT

SUPPORT@GENUINBIOTECH.COM  
TEL: +1-540-855-7041

### ORDERS

SALES@GENUINBIOTECH.COM  
FAX: +1-540-855-7041

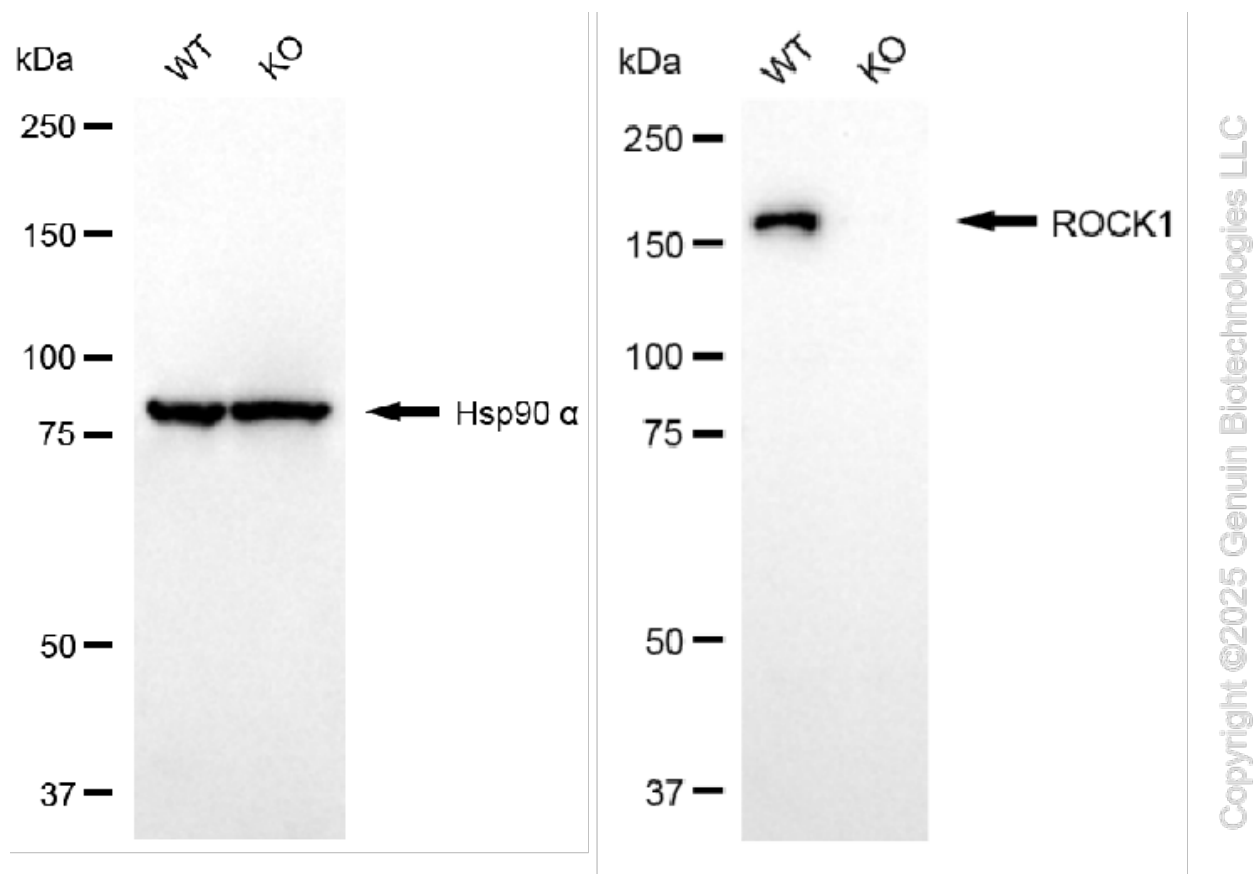
[WWW.GENUINBIOTECH.COM](http://WWW.GENUINBIOTECH.COM)



Western blotting analysis using anti-ROCK1 antibody (Cat#71235). Total cell lysates (30 µg) from various cell lines were loaded and separated by SDS-PAGE. The blot was incubated with anti-ROCK1 antibody (Cat#71235, 1:5,000) and HRP-conjugated goat anti-rabbit secondary antibody (Cat#201, 1:20,000) respectively. Image was developed using NaQ™ ECL Substrate Kit (Cat#716).

## KO-Validated Anti-ROCK1 Rabbit Monoclonal Antibody

PAGE 4



Western blotting analysis using anti-ROCK1 antibody (Cat#71235). ROCK1 expression in wild-type (WT) and ROCK1 knockout (KO) 293T cells with 20  $\mu$ g of total cell lysates. Hsp90  $\alpha$  serves as a loading control. The blot was incubated with anti-ROCK1 antibody (Cat#71235, 1:5,000) and HRP-conjugated goat anti-rabbit secondary antibody (Cat#201, 1:20,000) respectively. Image was developed using NaQ<sup>TM</sup> ECL Substrate Kit (Cat#716).

### SUPPORT

SUPPORT@GENUINBIOTECH.COM  
TEL: +1-540-855-7041

### ORDERS

SALES@GENUINBIOTECH.COM  
FAX: +1-540-855-7041

[WWW.GENUINBIOTECH.COM](http://WWW.GENUINBIOTECH.COM)