

KO-Validated Anti-G3BP Recombinant Rabbit Monoclonal Antibody



Catalog #: 71236

Aliases

G3BP1; G3BP Stress Granule Assembly Factor 1; G3BP; HDH-VIII; Ras-GTPase-Activating Protein SH3-Domain-Binding Protein; GTPase Activating Protein (SH3 Domain) Binding Protein 1; Ras GTPase-Activating Protein-Binding Protein 1; GAP SH3 Domain-Binding Protein 1; ATP-Dependent DNA Helicase VIII; DNA Helicase VIII; G3BP-1; RasGAP-Associated Endoribonuclease G3BP; GAP Binding Protein; EC 3.6.4.12; EC 3.6.4.13; HDH VIII; EC 3.6.1

Background

Gene Name: G3BP1

NCBI Gene Entry: [10146](#)

UniProt Entry: [Q13283](#)

Application Information

Molecular Weight: Predicted, 52 kDa; observed, 68 kDa

Clonality: Rabbit monoclonal antibody

Clone ID: 25GB3530

Species Reactivity: Human, mouse, rat

Applications Tested: Western blotting (WB), flow cytometry (FCM), immunocytochemistry (IC)

Immunogen

A synthesized peptide derived from human G3BP

Isotype

Rabbit IgG

Storage Buffer

Supplied in PBS (pH 7.4) containing 50% glycerol, and 0.02% sodium azide.

Storage

Store at -20 °C for one year.

Recommended Dilutions

Western blotting (WB): 1:1,000-1:5,000

Flow Cytometry (FCM): 1:2,000

Immunocytochemistry (IC): 1:100-1:1,000

SUPPORT

SUPPORT@GENUINBIOTECH.COM
TEL: +1-540-855-7041

ORDERS

SALES@GENUINBIOTECH.COM
FAX: +1-540-855-7041

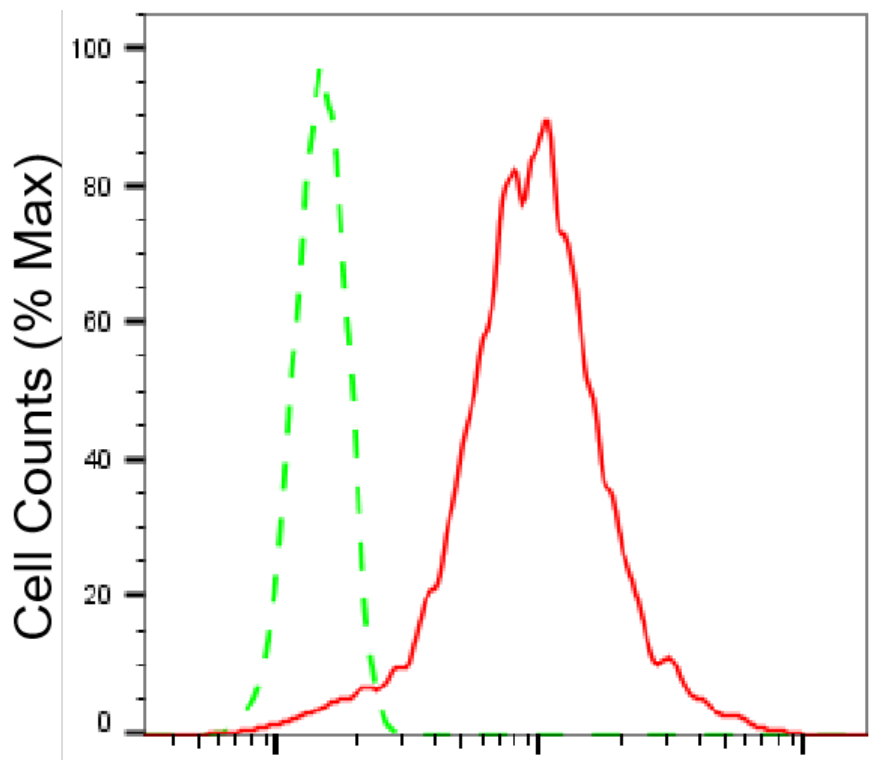
WWW.GENUINBIOTECH.COM

KO-Validated Anti-G3BP Recombinant Rabbit Monoclonal Antibody

PAGE 2

Note: This product is for research use only.

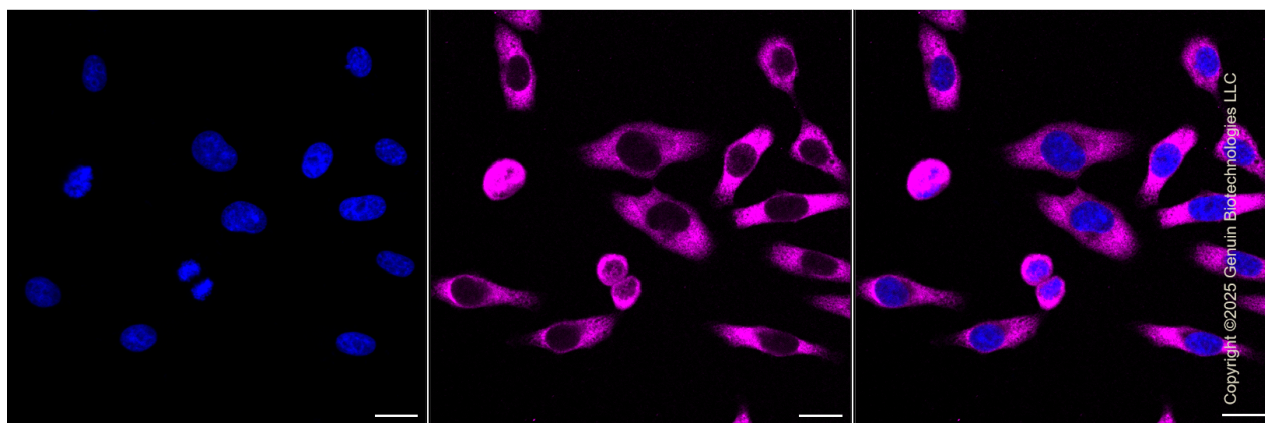
Validation Data



Copyright ©2025 Genuin Biotechnologies LLC

G3BP-Alexa Fluor® 647

Flow cytometric analysis of G3BP expression in HepG2 cells using G3BP antibody (Cat#71236, 1:2,000). Green, isotype control; red, G3BP.



Copyright ©2025 Genuin Biotechnologies LLC

Immunocytochemical staining of HepG2 cells with G3BP antibody (Cat#71236, 1:1,000). Nuclei were stained blue with DAPI; G3BP was stained magenta with Alexa Fluor® 647. Images were taken using Leica stellaris 5. Protein abundance based on laser Intensity and smart gain: High. Scale bar, 20 µm.

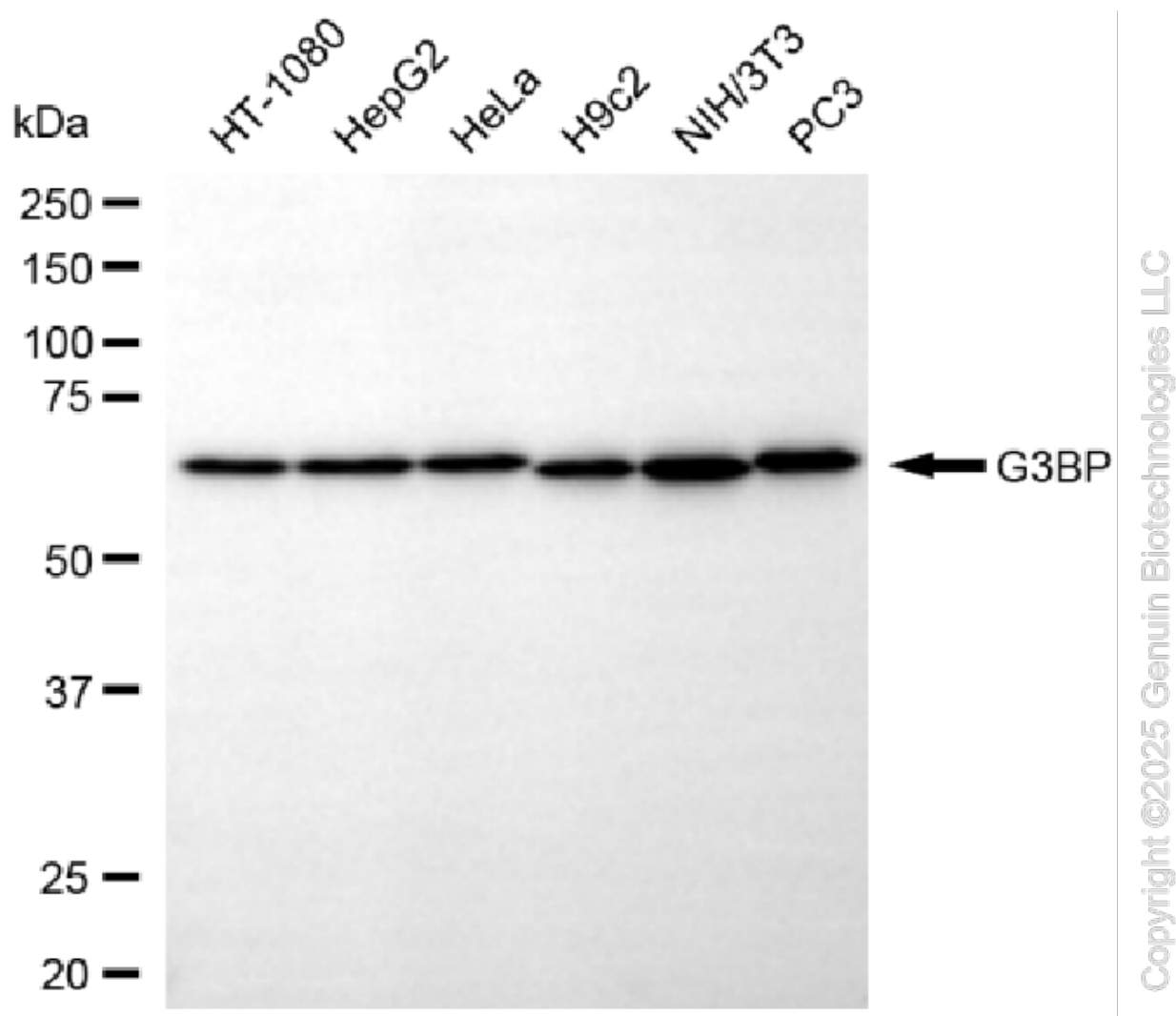
SUPPORT

SUPPORT@GENUINBIOTECH.COM
TEL: +1-540-855-7041

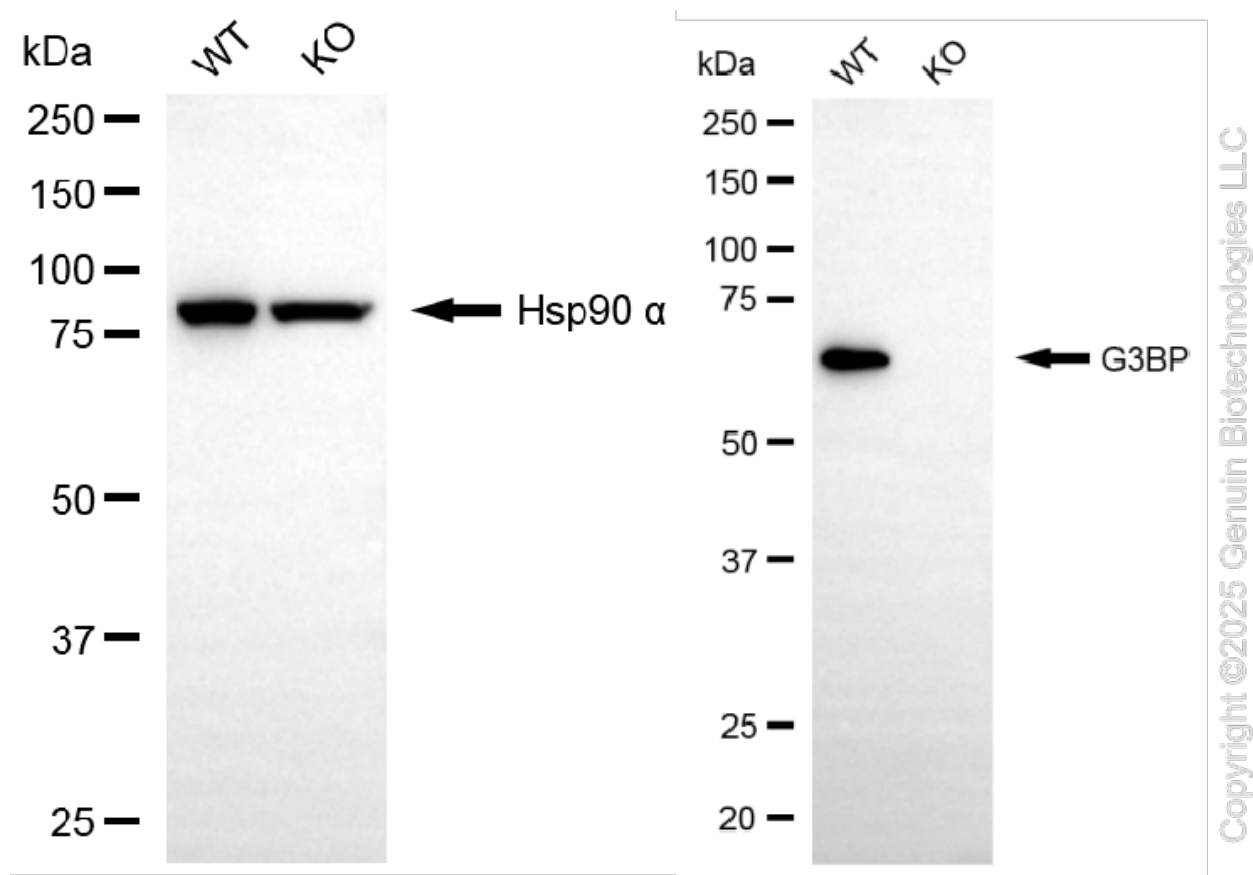
ORDERS

SALES@GENUINBIOTECH.COM
FAX: +1-540-855-7041

WWW.GENUINBIOTECH.COM



Western blotting analysis using anti-G3BP antibody (Cat#71236). Total cell lysates (30 µg) from various cell lines were loaded and separated by SDS-PAGE. The blot was incubated with anti-G3BP antibody (Cat#71236, 1:5,000) and HRP-conjugated goat anti-rabbit secondary antibody (Cat#201, 1:20,000) respectively. Image was developed using NaQ™ ECL Substrate Kit (Cat#716).



Western blotting analysis using anti-G3BP antibody (Cat#71236). G3BP expression in wild-type (WT) and G3BP knockout (KO) 293T cells with 20 µg of total cell lysates. Hsp90 α serves as a loading control. The blot was incubated with anti-G3BP antibody (Cat#71236, 1:5,000) and HRP-conjugated goat anti-rabbit secondary antibody (Cat#201, 1:20,000) respectively. Image was developed using NaQ™ ECL Substrate Kit (Cat#716).