

# KO-Validated Anti-Suppressor Of Cytokine Signaling 2 Recombinant Rabbit Monoclonal



**Catalog #: 71238**

## Aliases

SOCS2; Suppressor Of Cytokine Signaling 2; STATI2; SOCS-2; SSI-2; SSI2; CIS2; Cish2; Cytokine-Inducible SH2 Protein; STAT-Induced STAT Inhibitor 2; CIS-2; STAT-Induced STAT Inhibitor-2

## Background

Gene Name: SOCS2

NCBI Gene Entry: [8835](#)

UniProt Entry: [O14508](#)

## Application Information

Molecular Weight: Predicted, 22 kDa; observed, 18 kDa

Clonality: Rabbit monoclonal antibody

Clone ID: 25GB3570

Species Reactivity: Human, mouse

Applications Tested: Western blotting (WB), flow cytometry (FCM), immunocytochemistry (IC)

## Immunogen

A synthesized peptide derived from human SOCS2

## Isotype

Rabbit IgG

## Storage Buffer

Supplied in PBS (pH 7.4) containing 50% glycerol, and 0.02% sodium azide.

## Storage

Store at -20 °C for one year.

## Recommended Dilutions

Western Blotting (WB): 1:1,000-1:5,000

Flow Cytometry (FCM): 1:2,000

Immunocytochemistry (IC): 1:100-1:1,000

**Note:** This product is for research use only.

---

### SUPPORT

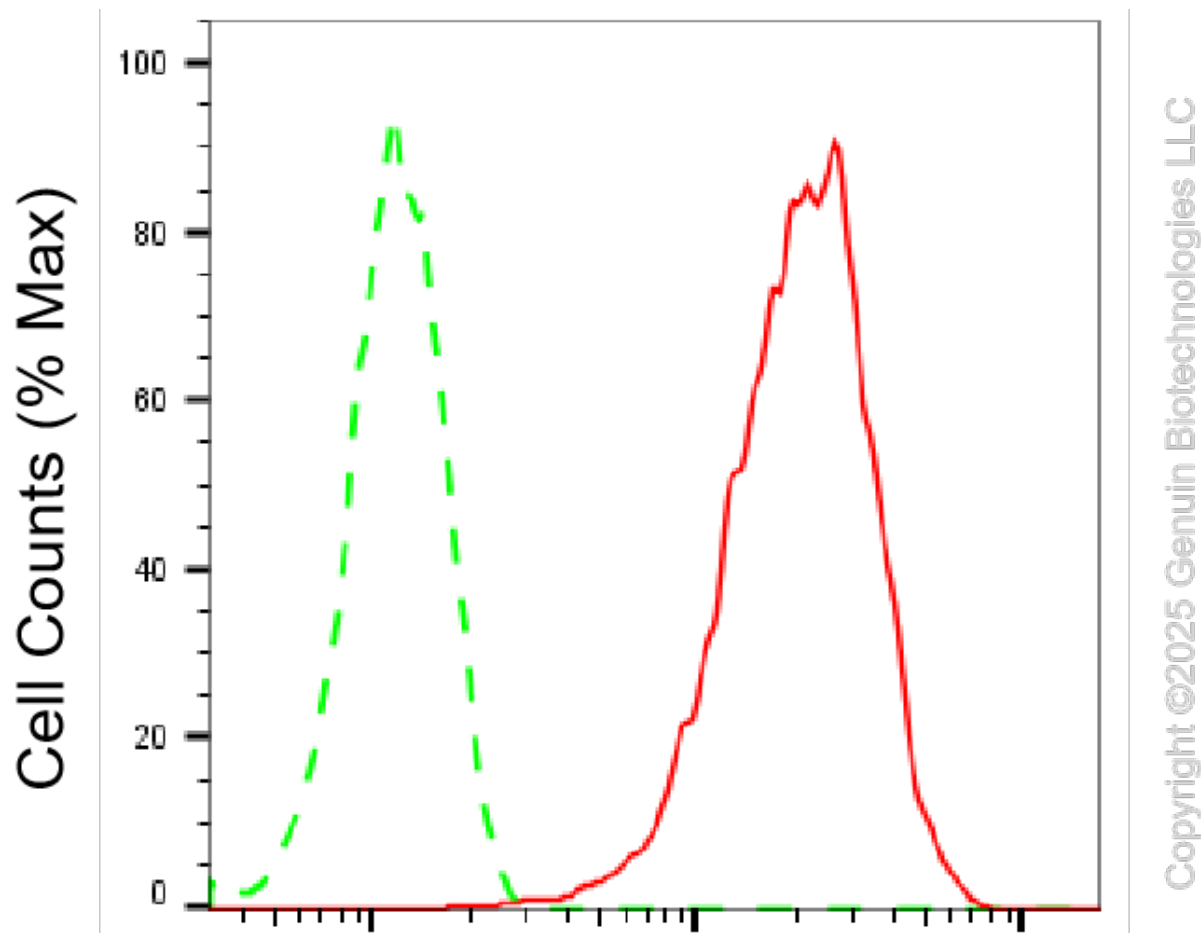
SUPPORT@GENUINBIOTECH.COM  
TEL: +1-540-855-7041

### ORDERS

SALES@GENUINBIOTECH.COM  
FAX: +1-540-855-7041

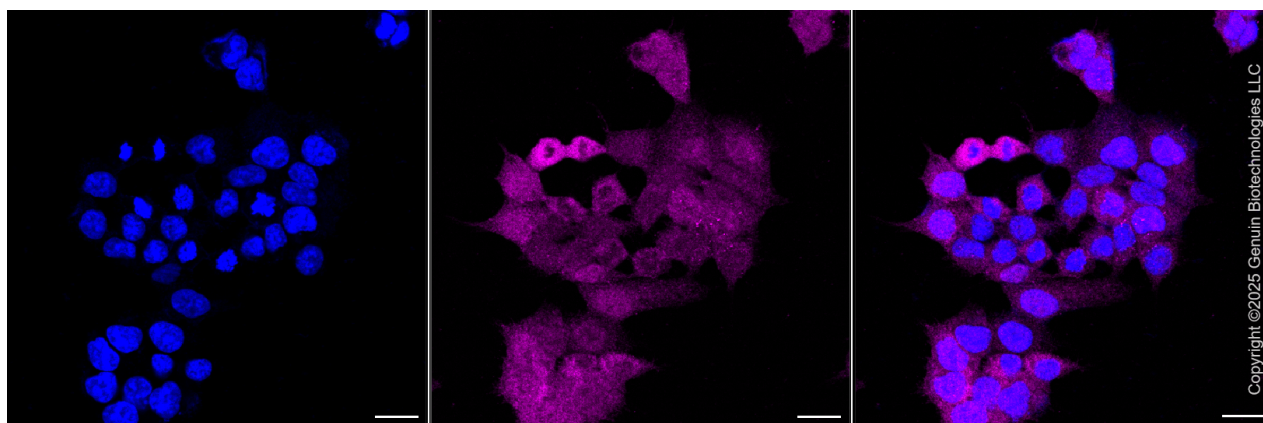
[WWW.GENUINBIOTECH.COM](http://WWW.GENUINBIOTECH.COM)

**Validation Data**

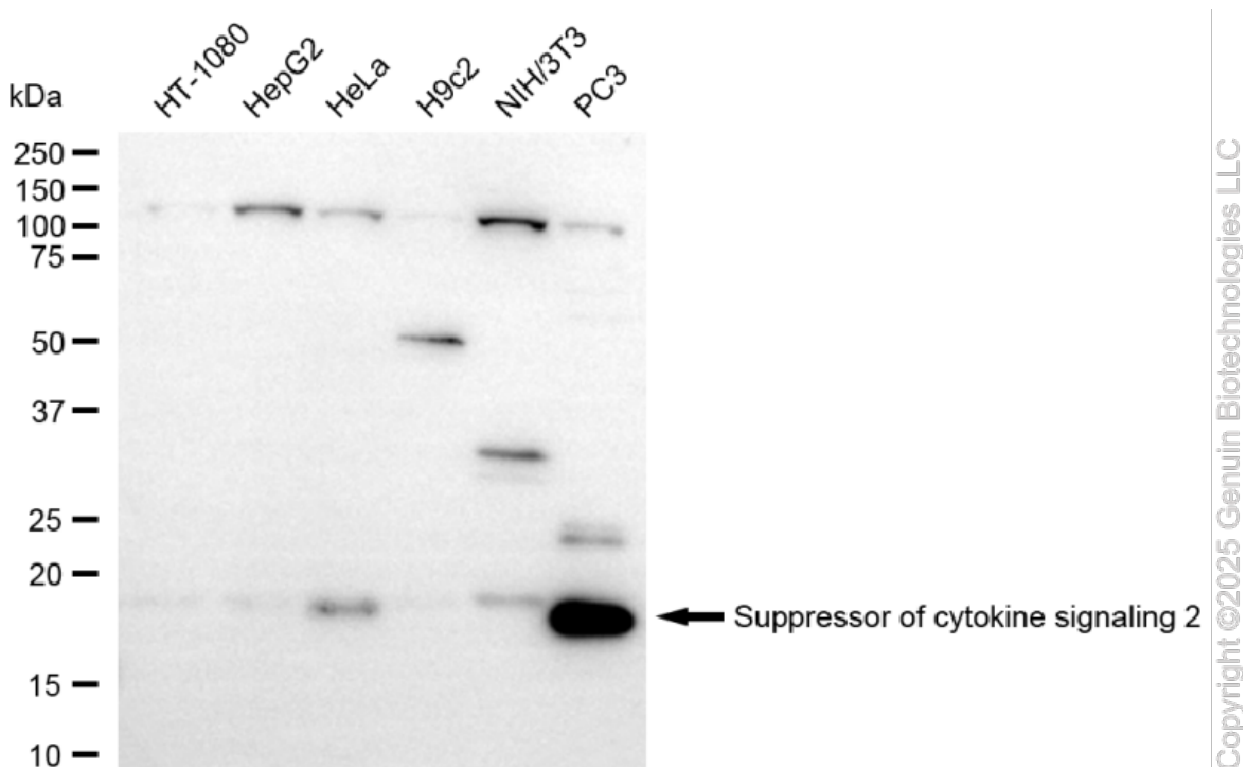


**Suppressor of cytokine signaling 2-  
Alexa Fluor® 647**

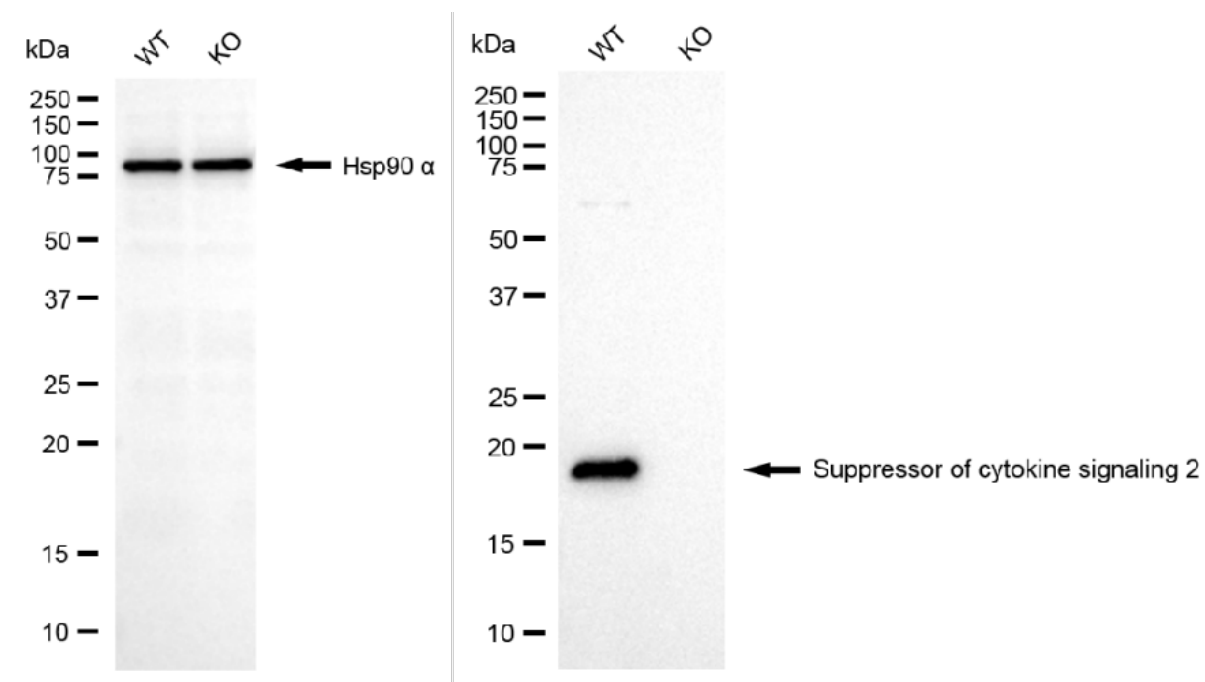
Flow cytometric analysis of Suppressor of cytokine signaling 2 expression in HAP-1 cells using anti-Suppressor of cytokine signaling 2 antibody (Cat#71238, 1:2,000). Green, isotype control; red, Suppressor of cytokine signaling 2.



Immunocytochemical staining of HAP-1 cells with anti-Suppressor of cytokine signaling 2 antibody (Cat#71238, 1:1,000). Nuclei were stained blue with DAPI; Suppressor of cytokine signaling 2 was stained magenta with Alexa Fluor® 647. Images were taken using Leica stellaris 5. Protein abundance based on laser Intensity and smart gain: Medium. Scale bar, 20  $\mu$ m.



Western blotting analysis using anti-suppressor of cytokine signaling 2 antibody (Cat#71238). Total cell lysates (30  $\mu$ g) from various cell lines were loaded and separated by SDS-PAGE. The blot was incubated with anti-suppressor of cytokine signaling 2 antibody (Cat#71238, 1:5,000) and HRP-conjugated goat anti-rabbit secondary antibody (Cat#201, 1:20,000) respectively. Image was developed using FeQ™ ECL Substrate Kit (Cat#226).



Copyright ©2025 Genuin Biotechnologies LLC

Western blotting analysis using anti-suppressor of cytokine signaling 2 antibody (Cat#71238). Suppressor of cytokine signaling 2 expression in wild type (WT) and suppressor of cytokine signaling 2 (SOCS2) knockout (KO) HSHC cells with 20 µg of total cell lysates. Hsp90 α serves as a loading control. The blot was incubated with anti-suppressor of cytokine signaling 2 antibody (Cat#71238, 1:5,000) and HRP-conjugated goat anti-rabbit secondary antibody (Cat#201, 1:20,000) respectively. Image was developed using NaQ™ ECL Substrate Kit (Cat#716).