

KO-Validated Anti-FTO Rabbit Monoclonal Antibody



Catalog #: 71241

Aliases

FTO; FTO Alpha-Ketoglutarate Dependent Dioxygenase; KIAA1752; ALKBH9; U6 Small Nuclear RNA (2'-O-Methyladenosine-N(6)-)-Demethylase FTO; U6 Small Nuclear RNA N(6)-Methyladenosine-Demethylase FTO; MRNA (2'-O-Methyladenosine-N(6)-)-Demethylase FTO; Alpha-Ketoglutarate-Dependent Dioxygenase FTO; Intragenic FTO Exon 9 Containing Transcript; MRNA N(6)-Methyladenosine Demethylase FTO; Fat Mass And Obesity-Associated Protein; TRNA N1-Methyl Adenine Demethylase FTO; Fat Mass And Obesity Associated; M6A(M)-Demethylase FTO; AlkB Homolog 9; MGC5149; IFEX9; FTO, Alpha-Ketoglutarate; Dependent Dioxygenase; Alpha-Ketoglutarate-Dependent Dioxygenase; EC 1.14.11.53; EC 1.14.11.-; BMIQ14; GDFD

Background

Gene Name: FTO

NCBI Gene Entry: [79068](#)

UniProt Entry: [Q9C0B1](#)

Application Information

Molecular Weight: Predicted, 58 kDa, observed, 58 kDa

Clonality: Rabbit monoclonal antibody

Clone ID: 25GB3630

Species Reactivity: Human, mouse

Applications Tested: Western blotting (WB), flow cytometry (FCM)

Immunogen

A synthesized peptide derived from human FTO

Isotype

Rabbit IgG

Storage Buffer

Supplied in PBS (pH 7.4) containing 50% glycerol, and 0.02% sodium azide.

Storage

Store at -20 °C for one year.

Recommended Dilutions

SUPPORT

SUPPORT@GENUINBIOTECH.COM
TEL: +1-540-855-7041

ORDERS

SALES@GENUINBIOTECH.COM
FAX: +1-540-855-7041

WWW.GENUINBIOTECH.COM

KO-Validated Anti-FTO Rabbit Monoclonal Antibody

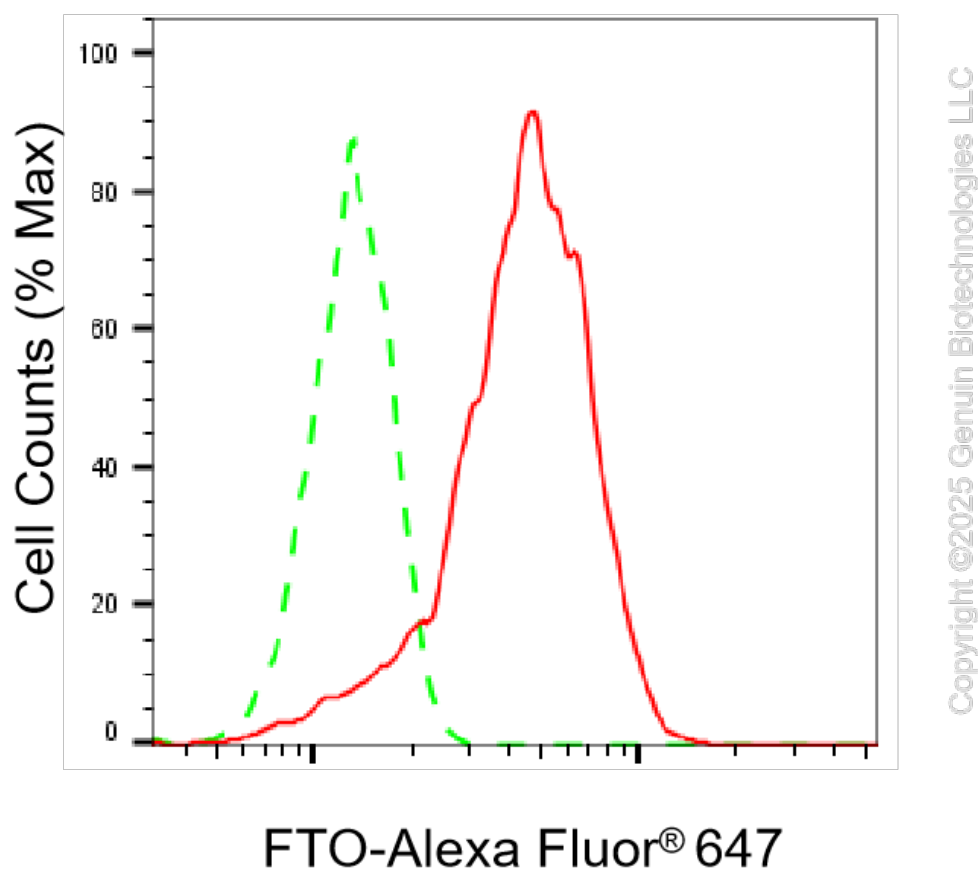
PAGE 2

Western blotting (WB): 1:1,000-1:5,000

Flow Cytometry (FCM): 1:2,000

Note: This product is for research use only.

Validation Data



Flow cytometric analysis of FTO expression in HepG2 cells using anti-FTO antibody (Cat#71241, 1:2,000). Green, isotype control; red, FTO.

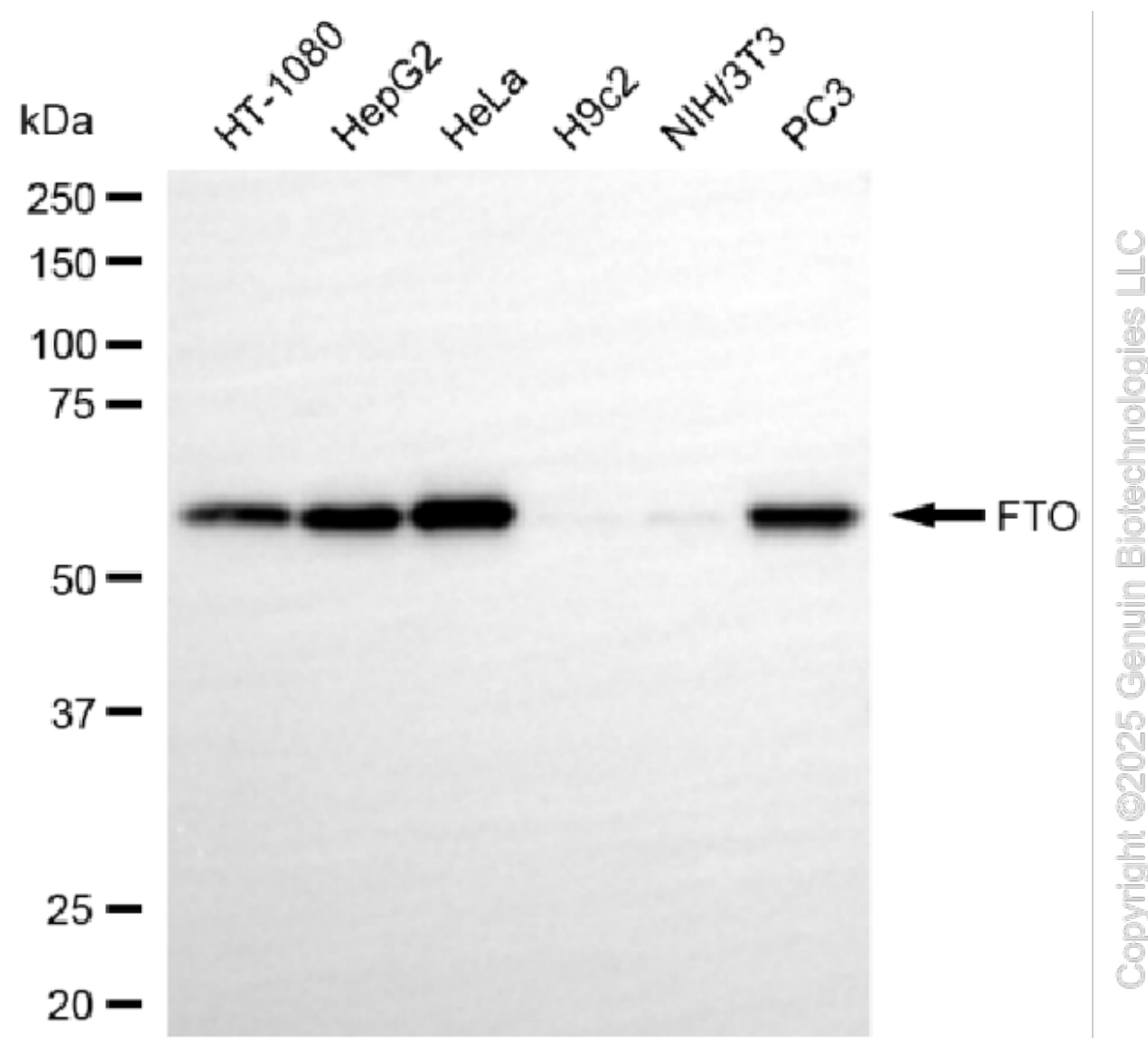
SUPPORT

SUPPORT@GENUINBIOTECH.COM
TEL: +1-540-855-7041

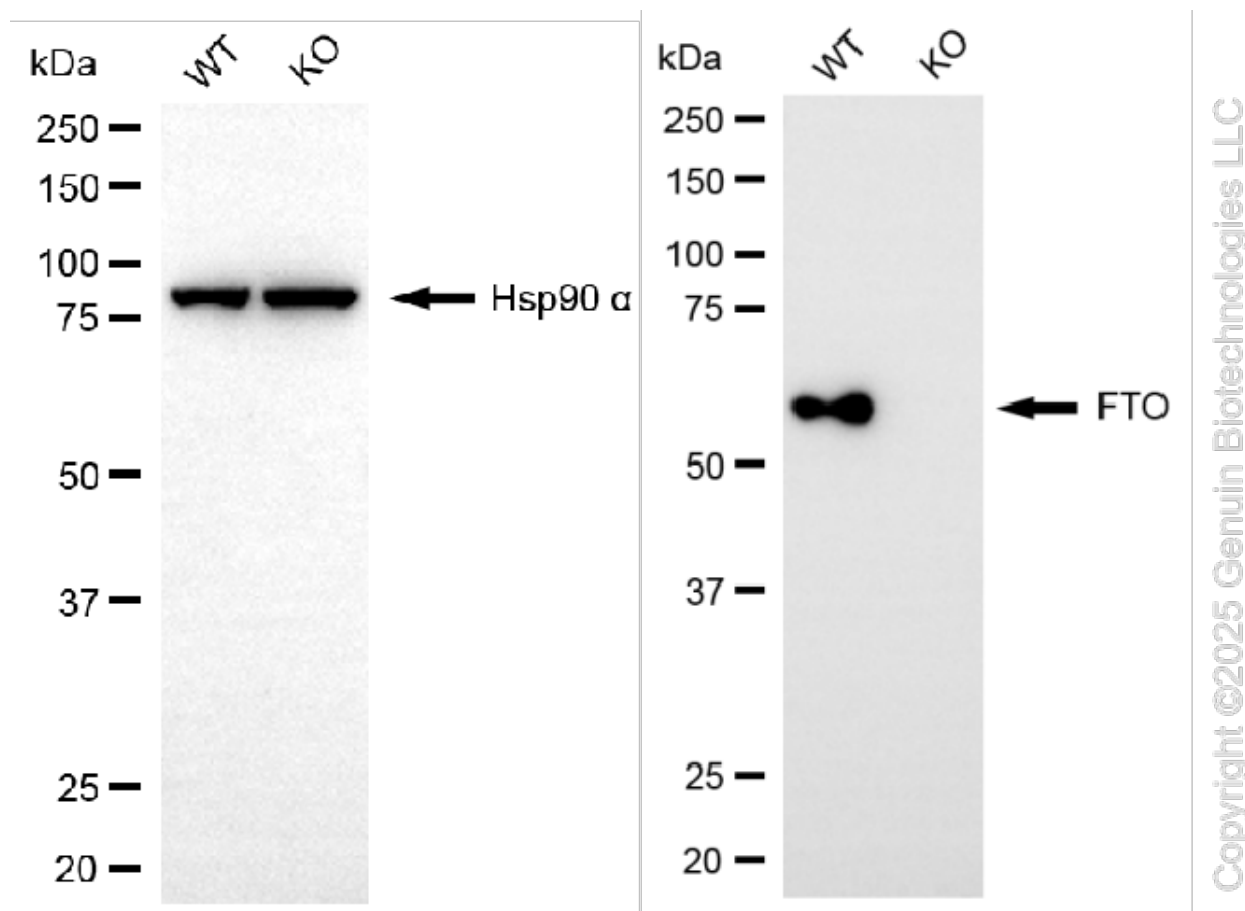
ORDERS

SALES@GENUINBIOTECH.COM
FAX: +1-540-855-7041

WWW.GENUINBIOTECH.COM



Western blotting analysis using anti-FTO antibody (Cat#71241). Total cell lysates (30 µg) from various cell lines were loaded and separated by SDS-PAGE. The blot was incubated with anti-FTO antibody (Cat#71241, 1:5,000) and HRP-conjugated goat anti-rabbit secondary antibody (Cat#201, 1:20,000) respectively. Image was developed using NaQ™ ECL Substrate Kit (Cat#716).



Western blotting analysis using anti-FTO antibody (Cat#71241). FTO expression in wild-type (WT) and FTO knockout (KO) 293T cells with 20 μ g of total cell lysates. Hsp90 α serves as a loading control. The blot was incubated with anti-FTO antibody (Cat#71241, 1:5,000) and HRP-conjugated goat anti-rabbit secondary antibody (Cat#201, 1:20,000) respectively. Image was developed using NaQ™ ECL Substrate Kit (Cat#716).