

KO-Validated Anti-AKT Serine/Threonine Kinase 1 Rabbit Monoclonal Antibody



Catalog #: 71242

Aliases

AKT1; AKT Serine/Threonine Kinase 1; RAC; PKB; PRKBA; AKT; V-Akt Murine Thymoma Viral Oncogene Homolog 1; RAC-Alpha Serine/Threonine-Protein Kinase; Protein Kinase B Alpha; Proto-Oncogene C-Akt; Protein Kinase B; RAC-PK-Alpha; EC 2.7.11.1; RAC-ALPHA; PKB Alpha; V-Akt Murine Thymoma Viral Oncogene-Like Protein 1; Serine-Threonine Protein Kinase; Rac Protein Kinase Alpha; RAC-Alpha; PKB-ALPHA; EC 2.7.11; AKT1m

Background

NCBI Gene Entry: [207](#)

UniProt Entry: [P31749](#)

Application Information

Molecular Weight: Predicted, 56 kDa; observed, 56 kDa

Clonality: Rabbit monoclonal antibody

Clone ID: 25GB3645

Species Reactivity: Human, mouse, rat

Applications Tested: Western blotting (WB), flow cytometry (FCM), immunocytochemistry (IC)

Immunogen

A synthesized peptide derived from human AKT1

Isotype

Rabbit IgG

Storage Buffer

Supplied in PBS (pH 7.4) containing 50% glycerol, and 0.02% sodium azide.

Storage

Store at -20 °C for one year.

Recommended Dilutions

Western Blotting (WB): 1:1,000-1:5,000

Flow Cytometry (FCM): 1:200-1:2,000

Immunocytochemistry (IC): 1:100-1:1,000

SUPPORT

SUPPORT@GENUINBIOTECH.COM
TEL: +1-540-855-7041

ORDERS

SALES@GENUINBIOTECH.COM
FAX: +1-540-855-7041

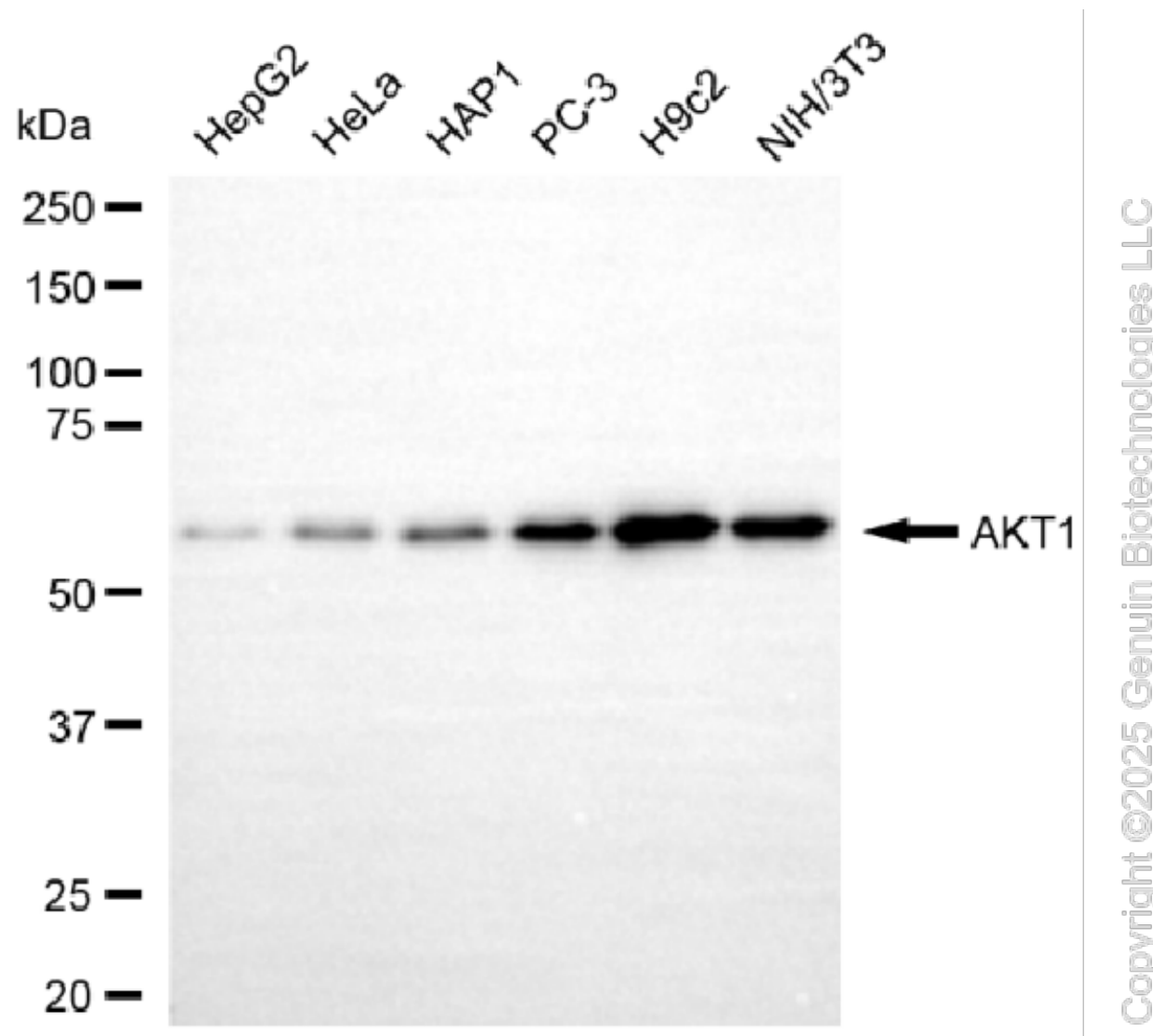
WWW.GENUINBIOTECH.COM

KO-Validated Anti-AKT Serine/Threonine Kinase 1 Rabbit Monoclonal Antibody

PAGE 2

Note: This product is for research use only.

Validation Data



Western blotting analysis using anti-AKT1 antibody (Cat#71242). Total cell lysates (30 μ g) from various cell lines were loaded and separated by SDS-PAGE. The blot was incubated with anti-AKT1 antibody (Cat#71242, 1:5,000) and HRP-conjugated goat anti-rabbit secondary antibody (Cat#201, 1:20,000) respectively. Image was developed using FeQ™ ECL Substrate Kit (Cat#226).

SUPPORT

SUPPORT@GENUINBIOTECH.COM
TEL: +1-540-855-7041

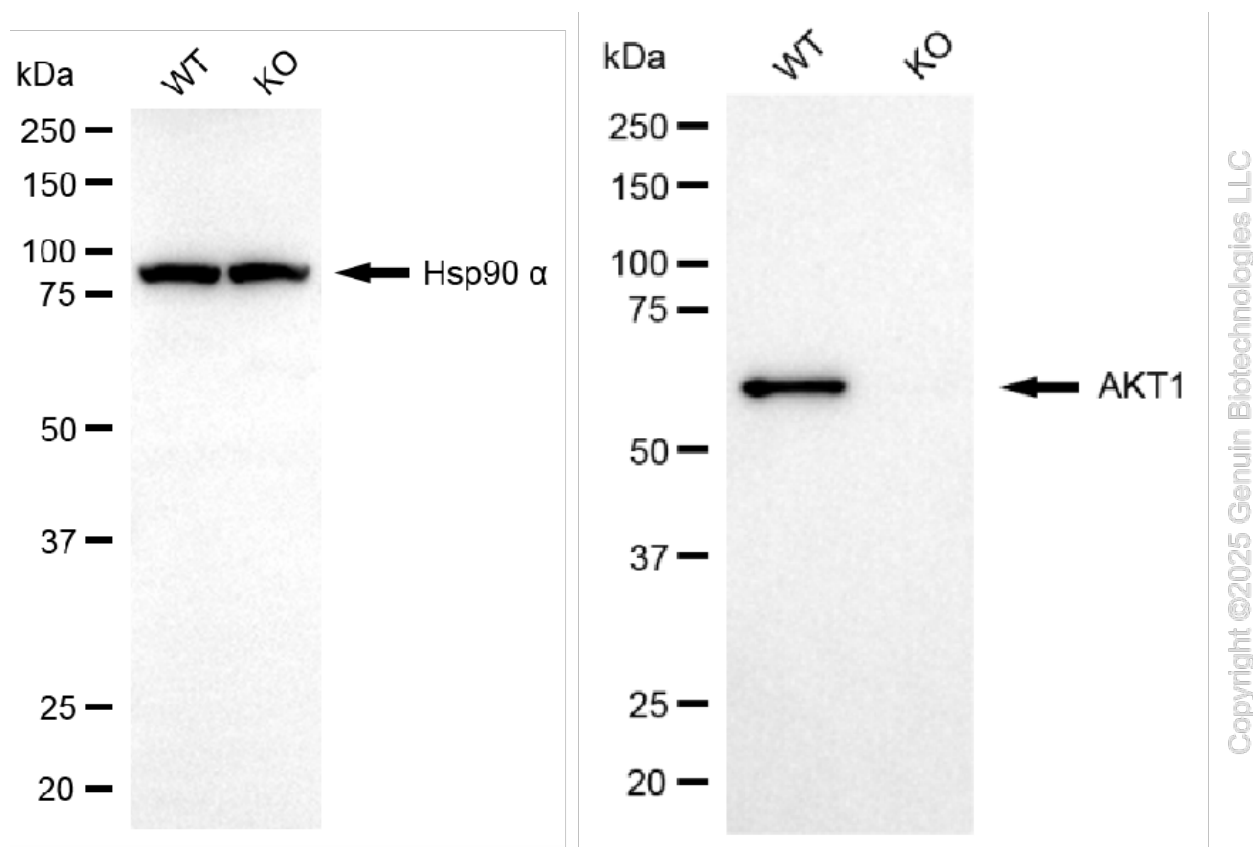
ORDERS

SALES@GENUINBIOTECH.COM
FAX: +1-540-855-7041

WWW.GENUINBIOTECH.COM

KO-Validated Anti-AKT Serine/Threonine Kinase 1 Rabbit Monoclonal Antibody

PAGE 3



Western blotting analysis using anti-AKT1 antibody (Cat#71242). AKT1 expression in wild type (WT) and AKT1 knockout (KO) HSHC cells with 20 μ g of total cell lysates. Hsp90 α serves as a loading control. The blot was incubated with anti-AKT1 antibody (Cat#71242, 1:2,500) and HRP-conjugated goat anti-rabbit secondary antibody (Cat#201, 1:20,000) respectively. Image was developed using NaQ™ ECL Substrate Kit (Cat#716).

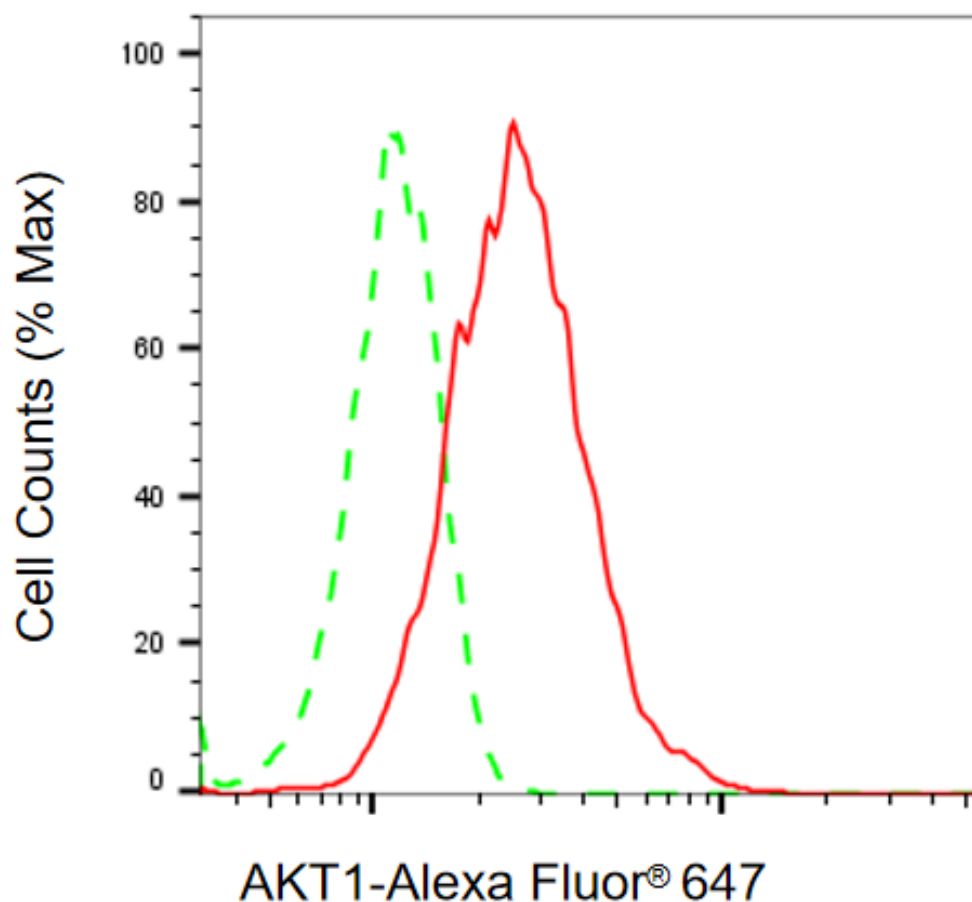
SUPPORT

SUPPORT@GENUINBIOTECH.COM
TEL: +1-540-855-7041

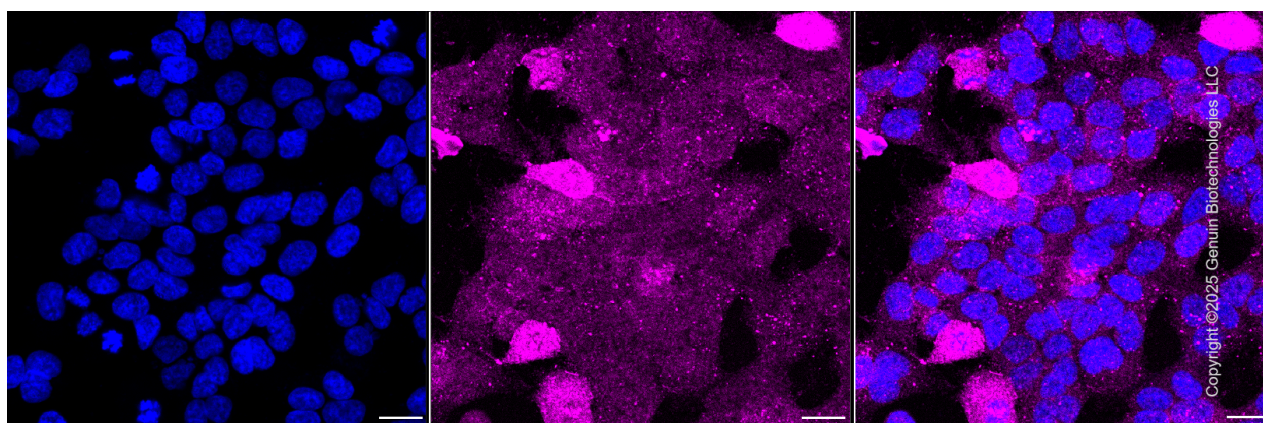
ORDERS

SALES@GENUINBIOTECH.COM
FAX: +1-540-855-7041

WWW.GENUINBIOTECH.COM



Flow cytometric analysis of AKT1 expression in HAP-1 cells using anti-AKT1 antibody (Cat#71242, 1:2000). Green, isotype control; red, AKT1.



Immunocytochemical staining of HAP1 cells with anti-AKT1 antibody (Cat#71242, 1:1000). Nuclei were stained blue with DAPI; AKT1 was stained magenta with Alexa Fluor® 647. Images were taken using Leica stellaris 5. Protein abundance based on laser Intensity and smart gain:

SUPPORT

SUPPORT@GENUINBIOTECH.COM
TEL: +1-540-855-7041

ORDERS

SALES@GENUINBIOTECH.COM
FAX: +1-540-855-7041

WWW.GENUINBIOTECH.COM

KO-Validated Anti-AKT Serine/Threonine Kinase 1 Rabbit Monoclonal Antibody

PAGE 5

Medium. Scale bar, 20 μ m.

SUPPORT

SUPPORT@GENUINBIOTECH.COM
TEL: +1-540-855-7041

ORDERS

SALES@GENUINBIOTECH.COM
FAX: +1-540-855-7041

WWW.GENUINBIOTECH.COM