

KO-Validated Anti-CDK6 Rabbit Monoclonal Antibody



Catalog #: 71243

Aliases

CDK6; Cyclin Dependent Kinase 6; PLSTIRE; Serine/Threonine-Protein Kinase PLSTIRE; Cell Division Protein Kinase 6; Cyclin-Dependent Kinase 6; EC 2.7.11.22; EC 2.7.11; MCPH12; CDKN6

Background

Gene Name: CDK6

NCBI Gene Entry: [1021](#)

UniProt Entry: [Q00534](#)

Application Information

Molecular Weight: Predicted, 37 kDa; observed, 35 kDa

Clonality: Rabbit monoclonal antibody

Clone ID: 25GB3665

Species Reactivity: Human

Applications Tested: Western blotting (WB), flow cytometry (FCM), immunocytochemistry (IC)

Immunogen

A synthesized peptide derived from human Cdk6

Isotype

Rabbit IgG

Storage Buffer

Supplied in PBS (pH 7.4) containing 50% glycerol, and 0.02% sodium azide.

Storage

Store at -20 °C for one year.

Recommended Dilutions

Western Blotting (WB): 1:1,000-1:5,000

Flow Cytometry (FCM): 1:2,000

Immunocytochemistry (IC): 1:100-1:1,000

Note: This product is for research use only.

SUPPORT

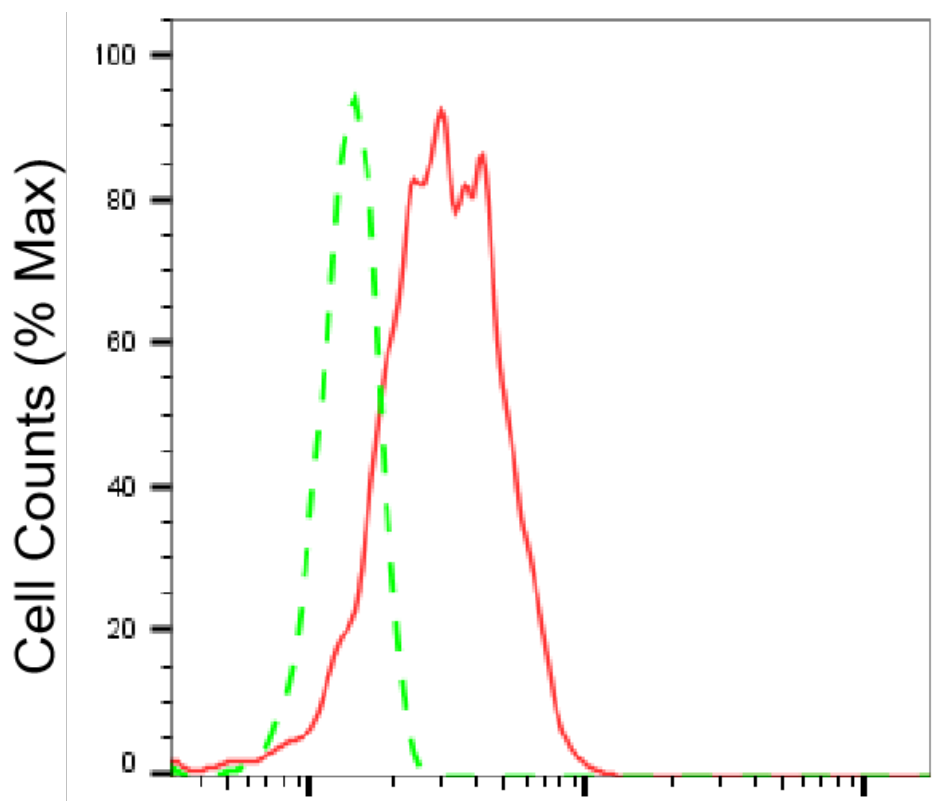
SUPPORT@GENUINBIOTECH.COM
TEL: +1-540-855-7041

ORDERS

SALES@GENUINBIOTECH.COM
FAX: +1-540-855-7041

WWW.GENUINBIOTECH.COM

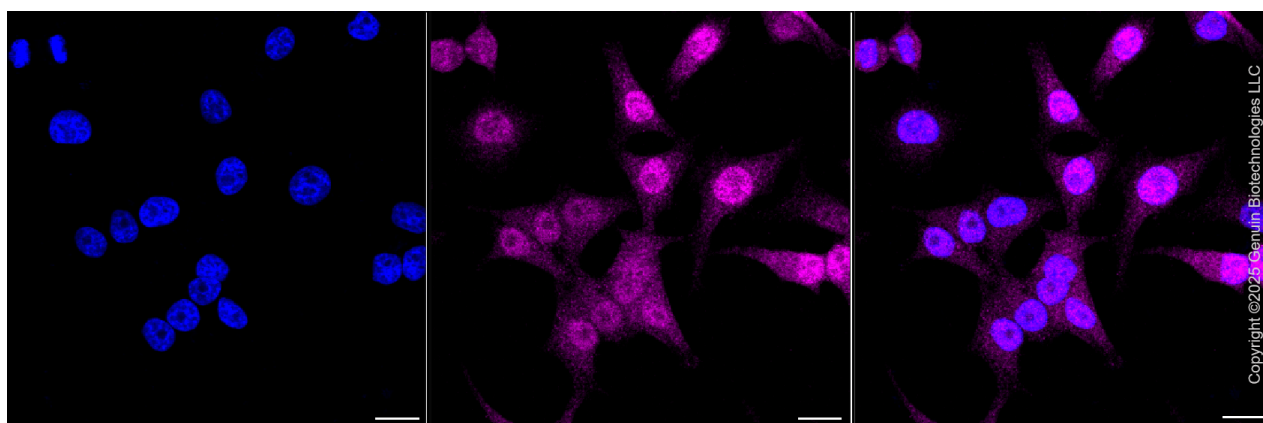
Validation Data



Copyright ©2025 Genuin Biotechnologies LLC

CDK6-Alexa Fluor® 647

Flow cytometric analysis of CDK6 in HeLa cells using CDK6 antibody (Cat#71243, 1:2,000). Green, isotype control; red, CDK6.



Copyright ©2025 Genuin Biotechnologies LLC

Immunocytochemical staining of HeLa cells with anti-CDK6 antibody (Cat#71243, 1:1,000). Nuclei were stained blue with DAPI; CDK6 was stained magenta with Alexa Fluor® 647. Images were taken using Leica stellaris 5. Protein abundance based on laser Intensity and smart gain: Medium. Scale bar, 20 µm.

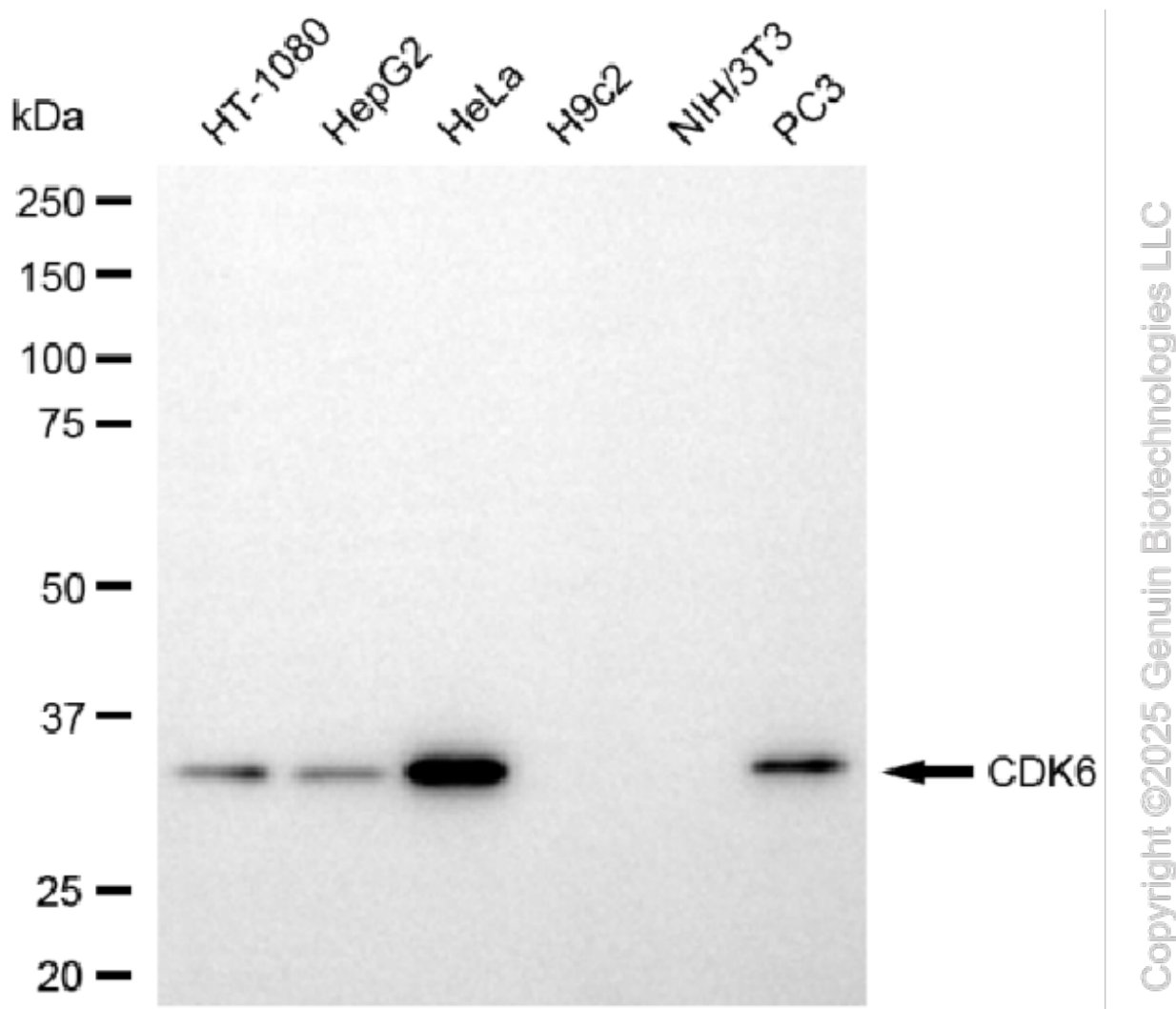
SUPPORT

SUPPORT@GENUINBIOTECH.COM
TEL: +1-540-855-7041

ORDERS

SALES@GENUINBIOTECH.COM
FAX: +1-540-855-7041

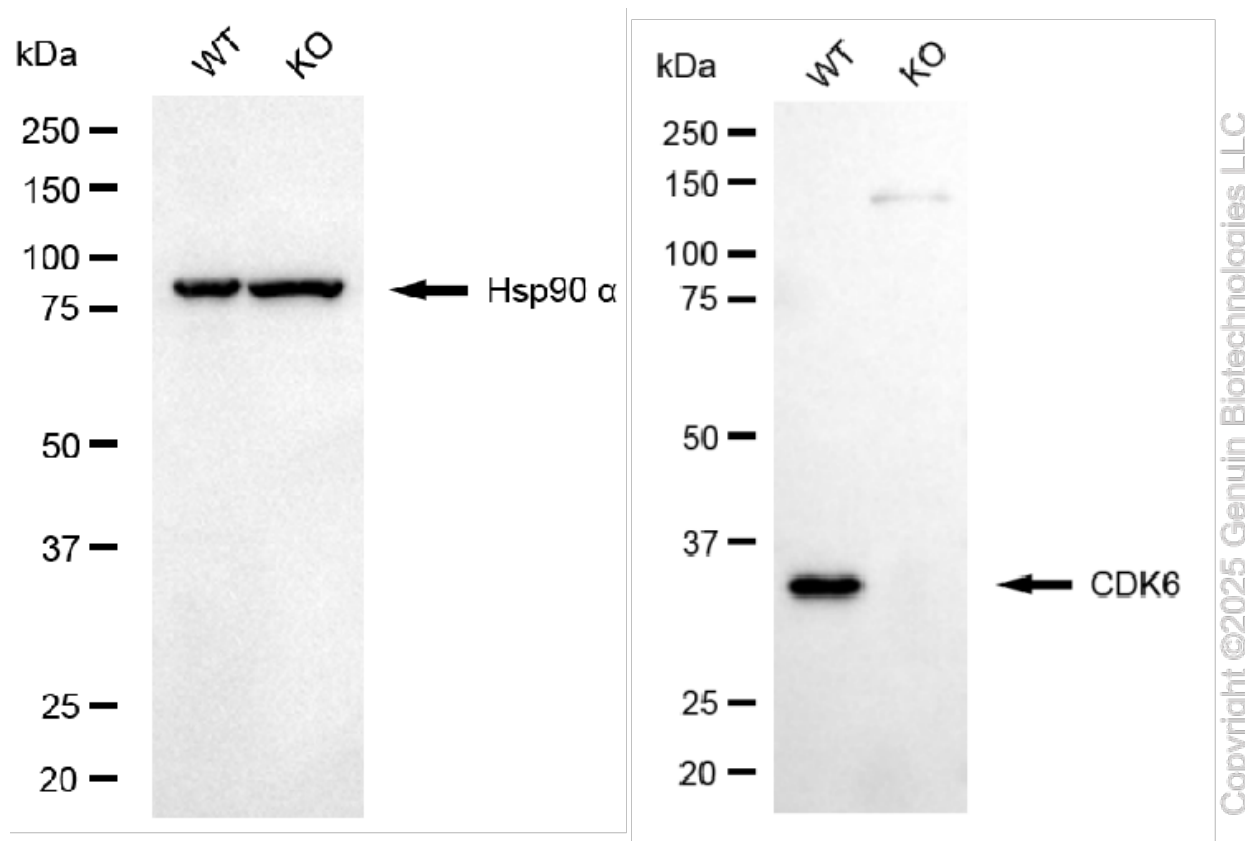
WWW.GENUINBIOTECH.COM



Western blotting analysis using anti-CDK6 antibody (Cat#71243). Total cell lysates (30 μ g) from various cell lines were loaded and separated by SDS-PAGE. The blot was incubated with anti-CDK6 antibody (Cat#71243, 1:5,000) and HRP-conjugated goat anti-rabbit secondary antibody (Cat#201, 1:20,000) respectively. Image was developed using NaQ™ ECL Substrate Kit (Cat#716).

KO-Validated Anti-CDK6 Rabbit Monoclonal Antibody

PAGE 4



Western blotting analysis using anti-CDK6 antibody (Cat#71243). CDK6 expression in wild-type (WT) and CDK6 knockout (KO) 293T cells with 20 μ g of total cell lysates. Hsp90 α serves as a loading control. The blot was incubated with anti-CDK6 antibody (Cat#71243, 1:5,000) and HRP-conjugated goat anti-rabbit secondary antibody (Cat#201, 1:20,000) respectively. Image was developed using NaQTM ECL Substrate Kit (Cat#716).

SUPPORT

SUPPORT@GENUINBIOTECH.COM
TEL: +1-540-855-7041

ORDERS

SALES@GENUINBIOTECH.COM
FAX: +1-540-855-7041

WWW.GENUINBIOTECH.COM