

# KO-Validated Anti-Catenin Beta 1 Mouse Monoclonal Antibody



**Catalog #: 71245**

## Aliases

CTNNB1; Catenin Beta 1; Beta-Catenin; Armadillo; CTNNB; Catenin (Cadherin-Associated Protein), Beta 1, 88kDa; Catenin Beta-1; Catenin (Cadherin-Associated Protein), Beta 1 (88kD); Catenin (Cadherin-Associated Protein), Beta 1; NEDSDV; MRD19; EVR7

## Background

Gene Name: CTNNB1

NCBI Gene Entry: [1499](#)

UniProt Entry: [P35222](#)

## Application Information

Molecular Weight: Predicted, 85 kDa; observed, 85 kDa

Clonality: Mouse monoclonal antibody

Clone ID: 25GB3695

Species Reactivity: Human, mouse, rat

Applications Tested: Western blotting (WB), flow cytometry (FCM), immunocytochemistry (IC), immunohistochemistry (IHC)

## Immunogen

Recombinant protein of human CTNNB1

## Isotype

Mouse IgG1

## Storage Buffer

Supplied in PBS (pH 7.4) containing 50% glycerol, and 0.02% sodium azide.

## Storage

Store at -20 °C for one year.

## Recommended Dilutions

Western Blotting (WB): 1:1,000-1:5,000

Flow Cytometry (FCM): 1:2,000

Immunocytochemistry (IC): 1:100-1:1,000

Immunohistochemistry (IHC): 1:100-1:200

---

### SUPPORT

SUPPORT@GENUINBIOTECH.COM  
TEL: +1-540-855-7041

### ORDERS

SALES@GENUINBIOTECH.COM  
FAX: +1-540-855-7041

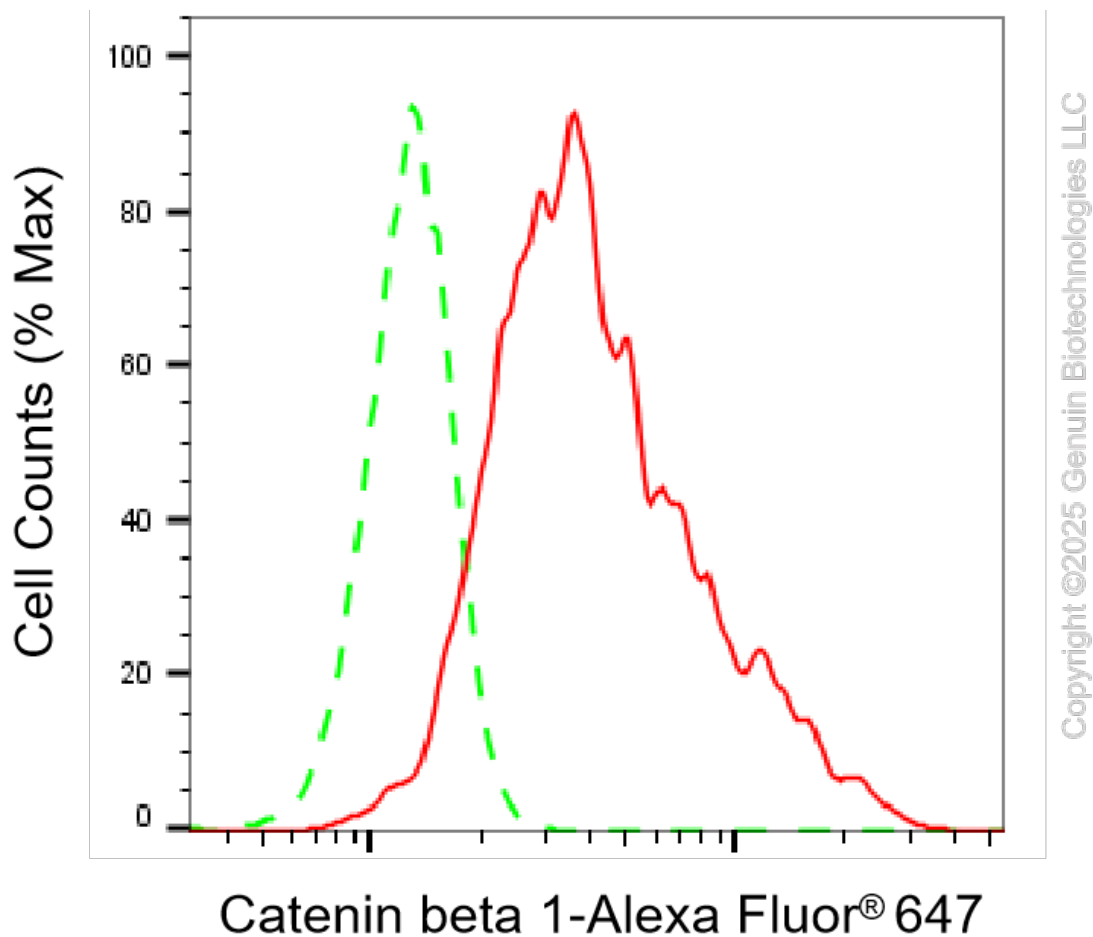
[WWW.GENUINBIOTECH.COM](http://WWW.GENUINBIOTECH.COM)

## KO-Validated Anti-Catenin Beta 1 Mouse Monoclonal Antibody

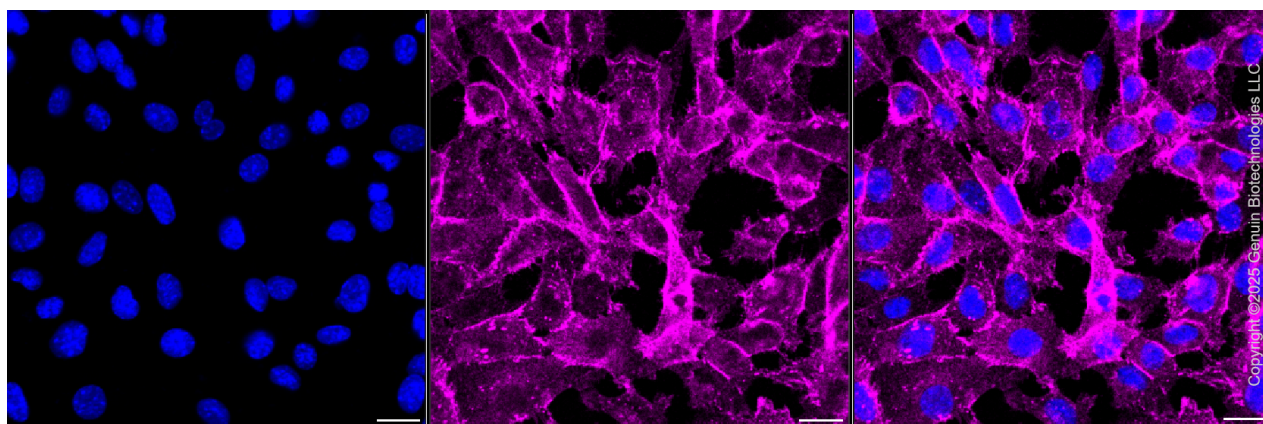
PAGE 2

**Note:** This product is for research use only.

### Validation Data



Flow cytometric analysis of Catenin beta 1 expression in C2C12 cells using anti-Catenin beta 1 antibody (Cat#71245, 1:2,000). Green, isotype control; red, Catenin beta 1.



Immunocytochemical staining of C2C12 cells with anti-Catenin beta 1 antibody (Cat#71245, 1:1,000). Nuclei were stained blue with DAPI; Catenin beta 1 was stained magenta with Alexa

#### SUPPORT

SUPPORT@GENUINBIOTECH.COM  
TEL: +1-540-855-7041

#### ORDERS

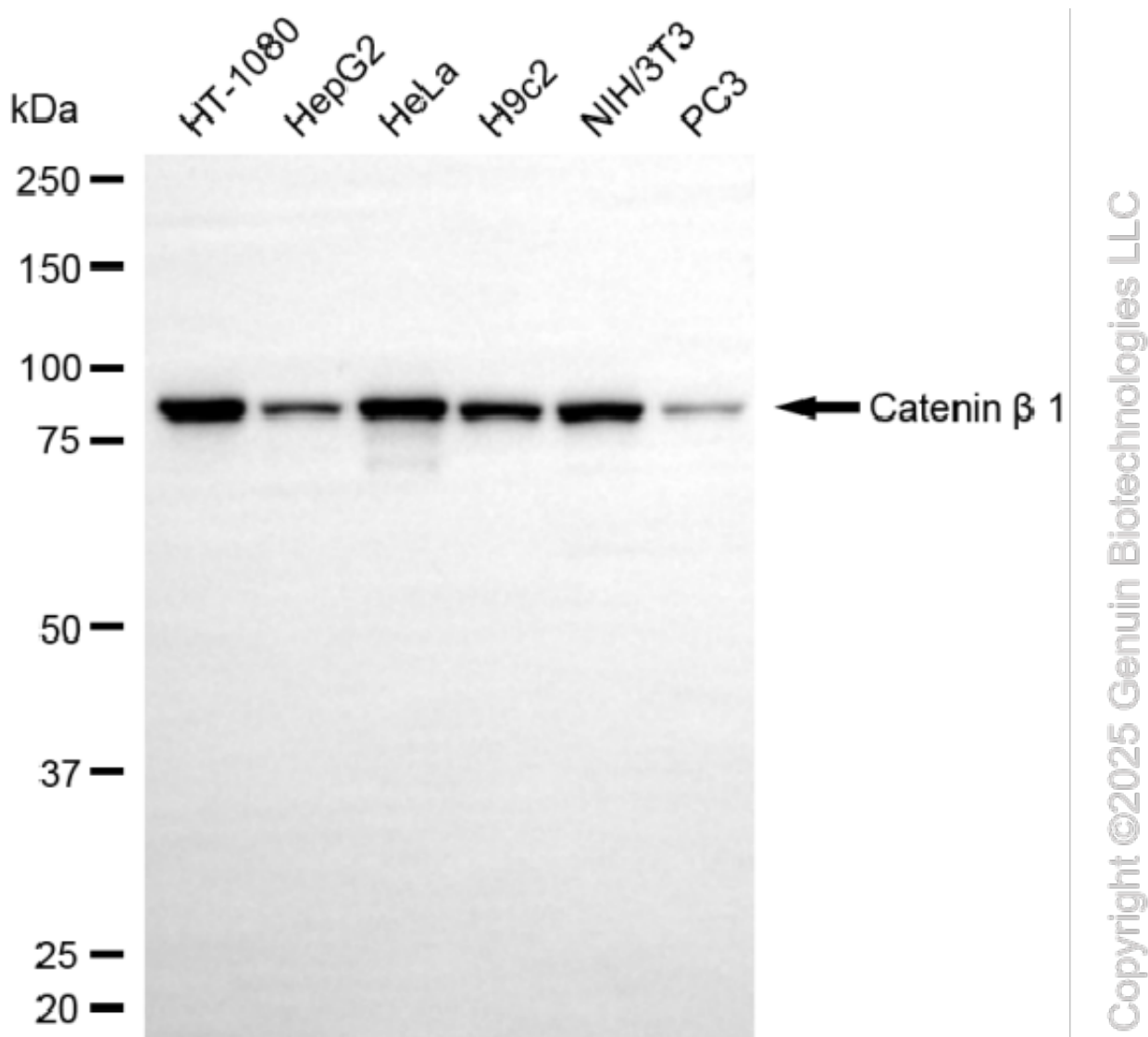
SALES@GENUINBIOTECH.COM  
FAX: +1-540-855-7041

WWW.GENUINBIOTECH.COM

## KO-Validated Anti-Catenin Beta 1 Mouse Monoclonal Antibody

PAGE 3

Fluor® 647. Images were taken using Leica stellaris 5. Protein abundance based on laser Intensity and smart gain: Medium. Scale bar, 20  $\mu$ m.



Western blotting analysis using anti-catenin beta 1 antibody (Cat#71245). Total cell lysates (30  $\mu$ g) from various cell lines were loaded and separated by SDS-PAGE. The blot was incubated with anti-catenin beta 1 antibody (Cat#71245, 1:5,000) and HRP-conjugated goat anti-mouse secondary antibody (Cat#101, 1:20,000) respectively. Image was developed using NaQ™ ECL Substrate Kit (Cat#716).

### SUPPORT

SUPPORT@GENUINBIOTECH.COM  
TEL: +1-540-855-7041

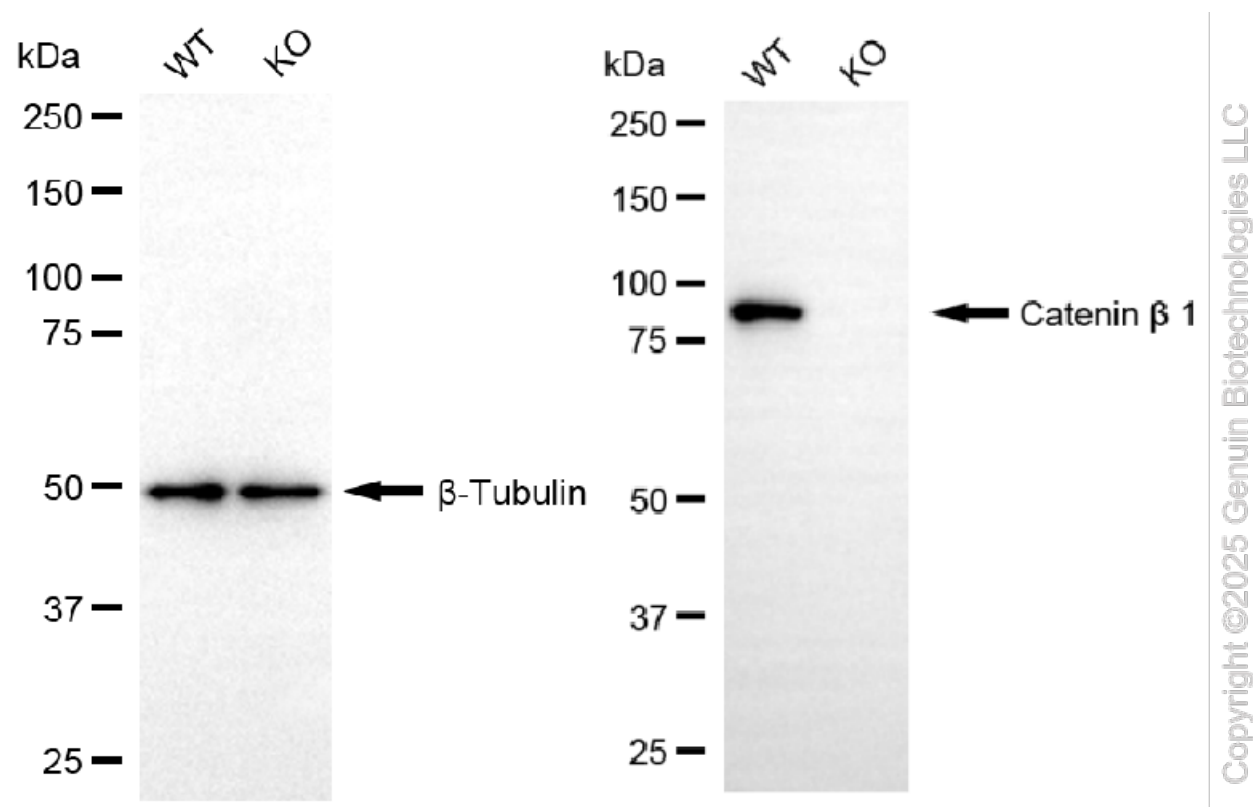
### ORDERS

SALES@GENUINBIOTECH.COM  
FAX: +1-540-855-7041

WWW.GENUINBIOTECH.COM

## KO-Validated Anti-Catenin Beta 1 Mouse Monoclonal Antibody

PAGE 4



Western blotting analysis using anti-catenin beta 1 antibody (Cat#71245). Catenin beta 1 expression in wild-type (WT) and catenin beta 1 (CTNNB1) knockout (KO) 293T cells with 20  $\mu$ g of total cell lysates.  $\beta$ -Tubulin serves as a loading control. The blot was incubated with anti-catenin beta 1 antibody (Cat#71245, 1:5,000) and HRP-conjugated goat anti-mouse secondary antibody (Cat#101, 1:20,000) respectively. Image was developed using NaQ<sup>TM</sup> ECL Substrate Kit (Cat#716).

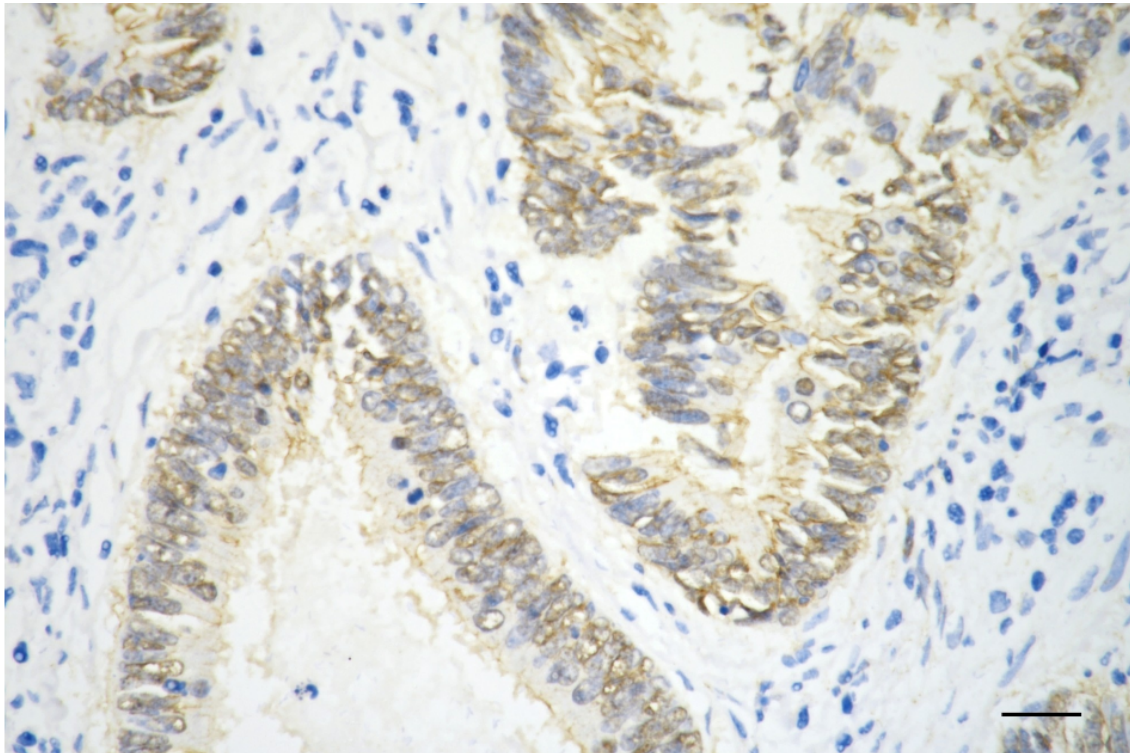
### SUPPORT

SUPPORT@GENUINBIOTECH.COM  
TEL: +1-540-855-7041

### ORDERS

SALES@GENUINBIOTECH.COM  
FAX: +1-540-855-7041

[WWW.GENUINBIOTECH.COM](http://WWW.GENUINBIOTECH.COM)



Copyright ©2025 Genuin Biotechnologies LLC

Immunohistochemistry was performed on paraffin-embedded human sigmoid colon carcinoma using anti-glial fibrillary acidic protein antibody (Cat#71245, 1:200). Antigen retrieval was done in sodium citrate buffer (pH 6.0). DAB was used for detection, with hematoxylin counterstaining. Images were acquired using a Nikon Ci-L Plus microscope (40× objective). Scale bar: 25  $\mu$ m.