

# KO-Validated Anti-ALDH1A3 Mouse Monoclonal Antibody



**Catalog #: 71254**

## Aliases

ALDH1A3; Aldehyde Dehydrogenase 1 Family Member A3; Retinaldehyde Dehydrogenase 3; RALDH3; ALDH6; Aldehyde Dehydrogenase 6; Aldehyde Dehydrogenase 1 Family, Member A3; Aldehyde Dehydrogenase Family 1 Member A3; Acetaldehyde Dehydrogenase 6; EC 1.2.1.36; EC 1.2.1; ALDH1A6; RALDH-3; RalDH3; MCOP8

## Background

Gene Name: ALDH1A3

NCBI Gene Entry: [220](#)

UniProt Entry: [P47895](#)

## Application Information

Molecular Weight: Predicted, 56 kDa, observed, 56 kDa

Clonality: Mouse monoclonal antibody

Clone ID: 25GB3805

Species Reactivity: Human

Applications Tested: Western blotting (WB)

## Immunogen

Recombinant protein of human ALDH1A3

## Isotype

Mouse IgG1

## Storage Buffer

Supplied in PBS (pH 7.4) containing 50% glycerol, and 0.02% sodium azide.

## Storage

Store at -20 °C for one year.

## Recommended Dilutions

Western blotting (WB): 1:500-1:2,500

**Note:** This product is for research use only.

## Validation Data

---

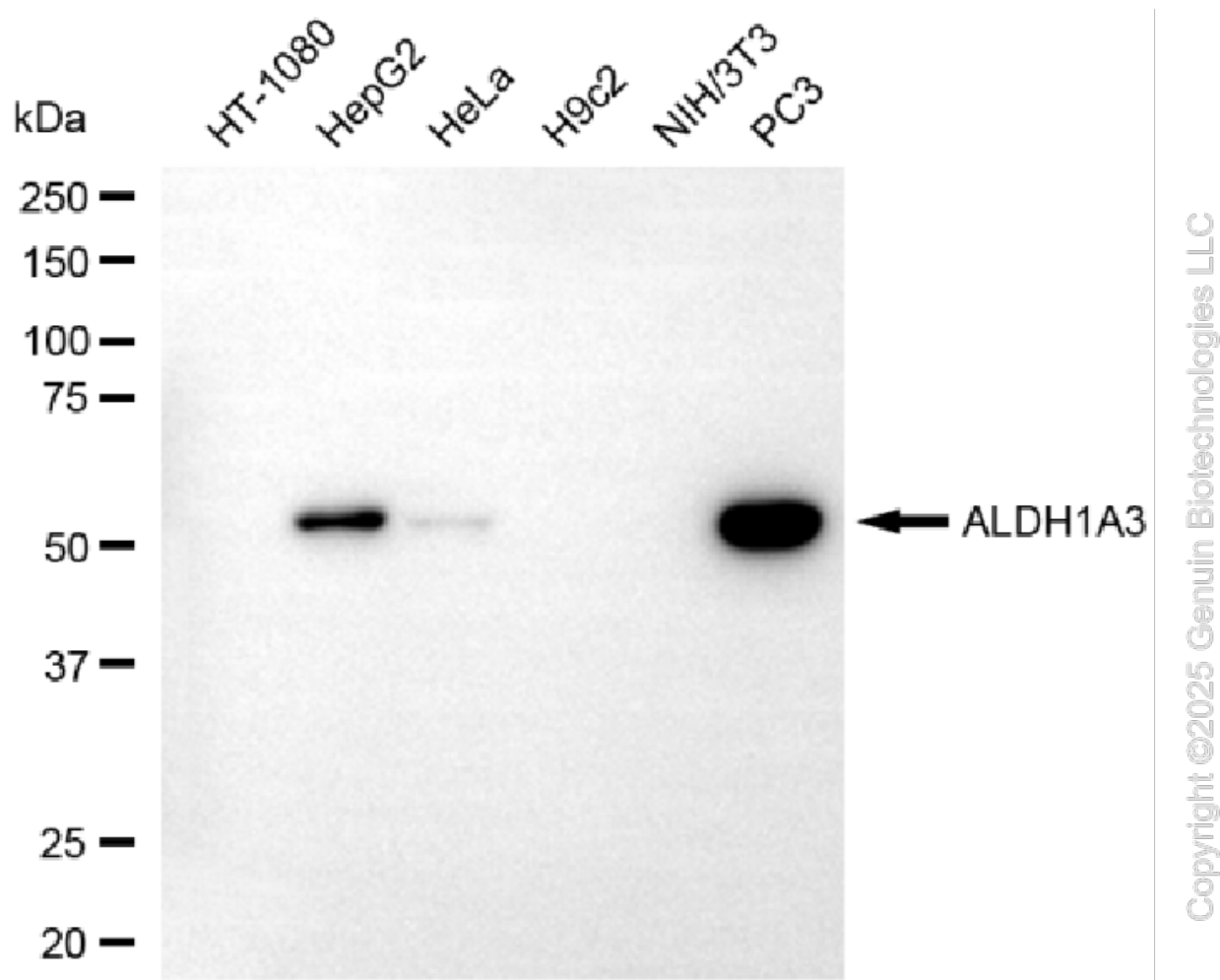
### SUPPORT

SUPPORT@GENUINBIOTECH.COM  
TEL: +1-540-855-7041

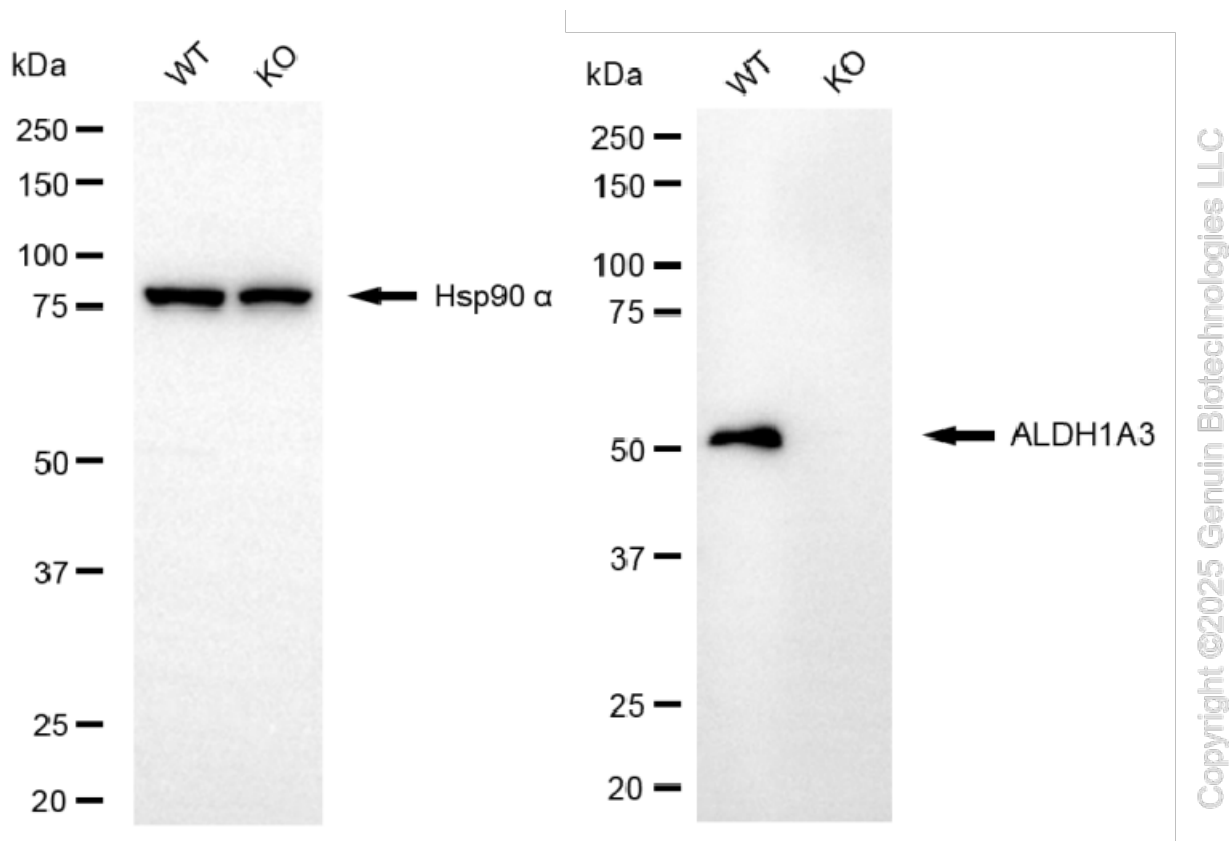
### ORDERS

SALES@GENUINBIOTECH.COM  
FAX: +1-540-855-7041

[WWW.GENUINBIOTECH.COM](http://WWW.GENUINBIOTECH.COM)



Western blotting analysis using anti-ALDH1A3 antibody (Cat#71254). Total cell lysates (30 µg) from various cell lines were loaded and separated by SDS-PAGE. The blot was incubated with anti-ALDH1A3 antibody (Cat#71254, 1:2,500) and HRP-conjugated goat anti-mouse secondary antibody (Cat#101, 1:20,000) respectively. Image was developed using FeQ™ ECL Substrate Kit (Cat#226).



Western blotting analysis using anti-ALDH1A3 antibody (Cat#71254). ALDH1A3 expression in wild-type (WT) and ALDH1A3 knockout (KO) HeLa cells with 20  $\mu$ g of total cell lysates. Hsp90  $\alpha$  serves as a loading control. The blot was incubated with anti-ALDH1A3 antibody (Cat#71254, 1:1,000) and HRP-conjugated goat anti-mouse secondary antibody (Cat#101, 1:20,000) respectively. Image was developed using FeQ™ ECL Substrate Kit (Cat#226).