

KO-Validated Anti-Chromobox 3 Mouse Monoclonal Antibody



Catalog #: 71257

Aliases

CBX3; Chromobox 3; HP1Hs-Gamma; Heterochromatin Protein 1 Homolog Gamma; Chromobox Protein Homolog 3; Modifier 2 Protein; HP1gamma; HECH; Chromobox Homolog 3 (HP1 Gamma Homolog, Drosophila); Chromobox Homolog 3 (Drosophila HP1 Gamma); Heterochromatin Protein HP1 Gamma; HP1 Gamma Homolog (Drosophila); Heterochromatin-Like Protein 1; Chromobox Homolog 3; HP1 Gamma Homolog; HP1-GAMMA; HP1 Gamma

Background

Gene Name: CBX3

NCBI Gene Entry: [11335](#)

UniProt Entry: [Q13185](#)

Application Information

Molecular Weight: Predicted, 21 kDa; observed, 21 kDa

Clonality: Mouse monoclonal antibody

Clone ID: 25GB3825

Species Reactivity: Human, mouse, rat

Applications Tested: Western blotting (WB)

Immunogen

Recombinant protein of human HP1-gamma

Isotype

Mouse IgG1

Storage Buffer

Supplied in PBS (pH 7.4) containing 50% glycerol, and 0.02% sodium azide.

Storage

Store at -20 °C for one year.

Recommended Dilutions

Western Blotting (WB): 1:1,000-1:5,000

Note: This product is for research use only.

SUPPORT

SUPPORT@GENUINBIOTECH.COM
TEL: +1-540-855-7041

ORDERS

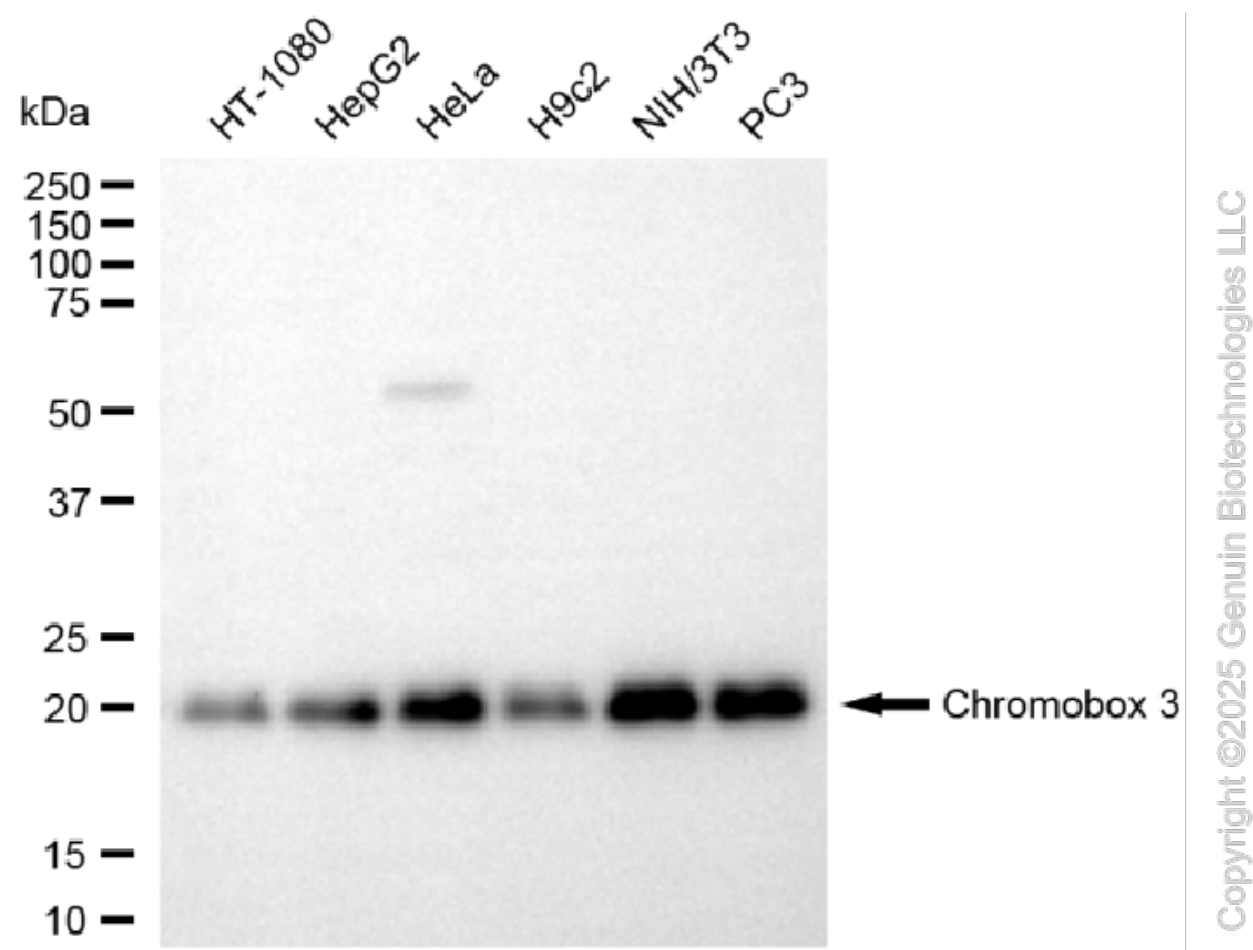
SALES@GENUINBIOTECH.COM
FAX: +1-540-855-7041

WWW.GENUINBIOTECH.COM

KO-Validated Anti-Chromobox 3 Mouse Monoclonal Antibody

PAGE 2

Validation Data



Western blotting analysis using anti-chromobox 3 antibody (Cat#71257). Total cell lysates (30 µg) from various cell lines were loaded and separated by SDS-PAGE. The blot was incubated with anti-chromobox 3 antibody (Cat#71257, 1:2,000) and HRP-conjugated goat anti-mouse secondary antibody (Cat#101, 1:20,000) respectively. Image was developed using NaQ™ ECL Substrate Kit (Cat#716).

SUPPORT

SUPPORT@GENUINBIOTECH.COM
TEL: +1-540-855-7041

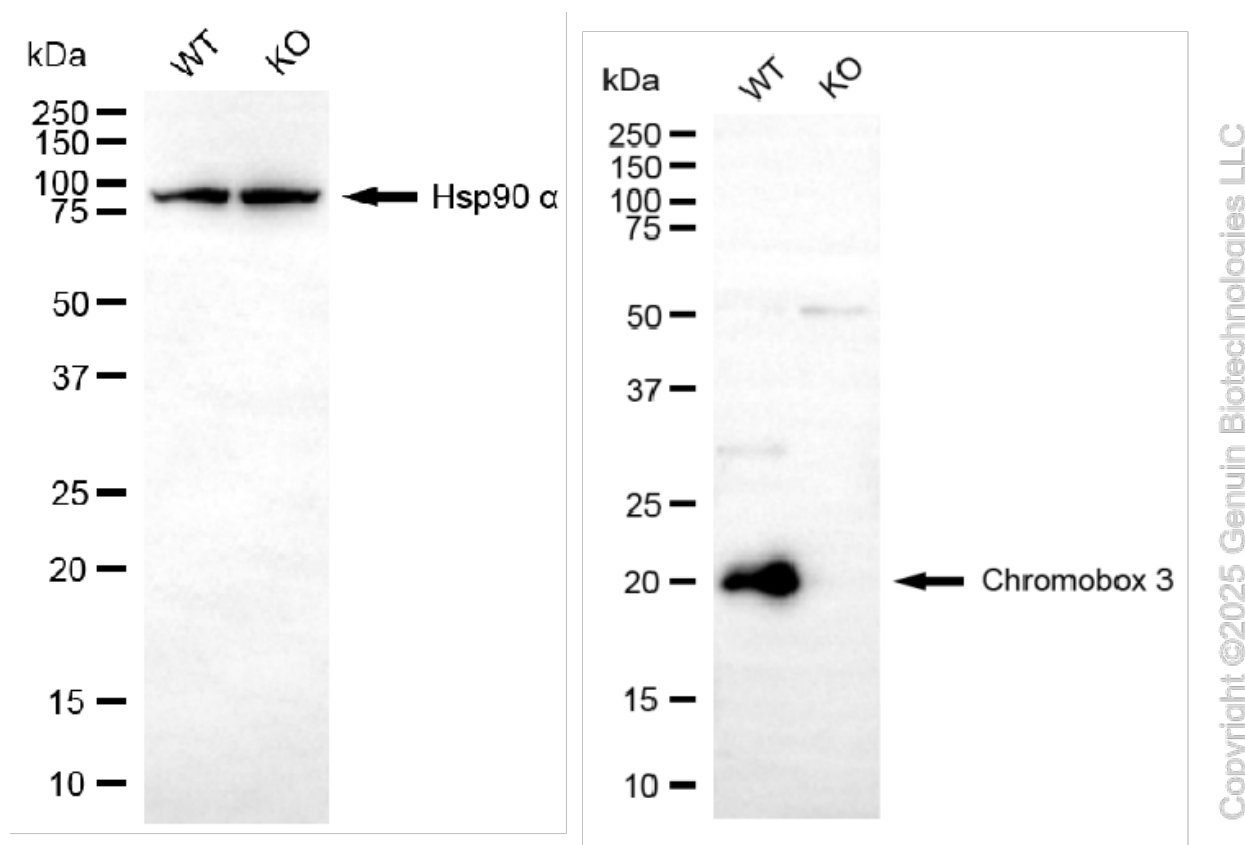
ORDERS

SALES@GENUINBIOTECH.COM
FAX: +1-540-855-7041

WWW.GENUINBIOTECH.COM

KO-Validated Anti-Chromobox 3 Mouse Monoclonal Antibody

PAGE 3



Western blotting analysis using anti-chromobox 3 antibody (Cat#71257). Chromobox 3 expression in wild-type (WT) and chromobox 3 (CBX3) knockout (KO) 293T cells with 20 µg of total cell lysates. Hsp90 α serves as a loading control. The blot was incubated with anti-chromobox 3 antibody (Cat#71257, 1:5,000) and HRP-conjugated goat anti-mouse secondary antibody (Cat#101, 1:20,000) respectively. Image was developed using FeQ™ ECL Substrate Kit (Cat#226).

SUPPORT

SUPPORT@GENUINBIOTECH.COM
TEL: +1-540-855-7041

ORDERS

SALES@GENUINBIOTECH.COM
FAX: +1-540-855-7041

WWW.GENUINBIOTECH.COM