

KO-Validated Anti-ATF6 Rabbit Monoclonal Antibody



Catalog #: 71259

Aliases

ATF6; Activating Transcription Factor 6; ATF6A; Cyclic AMP-Dependent Transcription Factor ATF-6 Alpha; CAMP-Dependent Transcription Factor ATF-6 Alpha; Activating Transcription Factor 6 Alpha; ATP6alpha; ATF6-Alpha; ACHM7

Background

Gene Name: ATF6

NCBI Gene Entry: [22926](#)

UniProt Entry: [P18850](#)

Application Information

Molecular Weight: Predicted, 75 kDa; observed, 90 kDa

Clonality: Rabbit monoclonal antibody

Clone ID: 25GB3875

Species Reactivity: Human

Applications Tested: Western blotting (WB), flow cytometry (FCM), immunocytochemistry (IC)

Immunogen

Recombinant protein of human ATF6

Isotype

Rabbit IgG

Storage Buffer

Supplied in PBS (pH 7.4) containing 50% glycerol, and 0.02% sodium azide.

Storage

Store at -20 °C for one year.

Recommended Dilutions

Western Blotting (WB): 1:1,000-1:5,000

Flow Cytometry (FCM): 1:2,000

Immunocytochemistry (IC): 1:100-1:1,000

Note: This product is for research use only.

SUPPORT

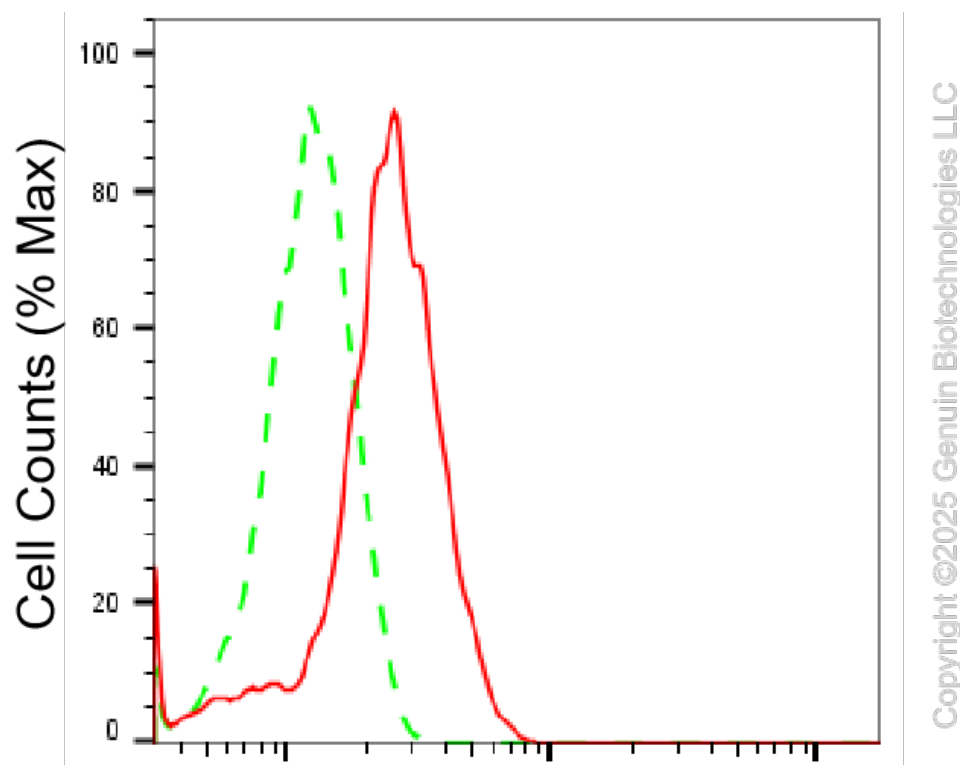
SUPPORT@GENUINBIOTECH.COM
TEL: +1-540-855-7041

ORDERS

SALES@GENUINBIOTECH.COM
FAX: +1-540-855-7041

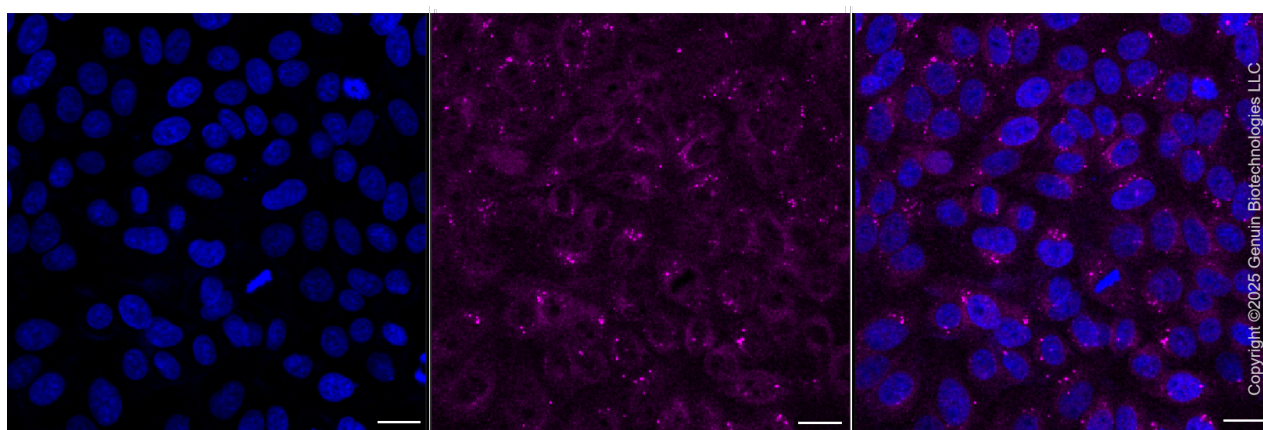
WWW.GENUINBIOTECH.COM

Validation Data



Activating transcription factor 6-Alexa Fluor® 647

Flow cytometric analysis of Activating transcription factor 6 expression in HepG2 cells using anti-Activating transcription factor 6 antibody (Cat#71259, 1:2,000). Green, isotype control; red, Activating transcription factor 6.



Immunocytochemical staining of HepG2 cells with anti-Activating transcription factor 6 antibody (Cat#71259, 1:1,000). Nuclei were stained blue with DAPI; Activating transcription factor 6 was stained magenta with Alexa Fluor® 647. Images were taken using Leica stellaris 5. Protein abundance based on laser Intensity and smart gain: Medium. Scale bar, 20 μ m.

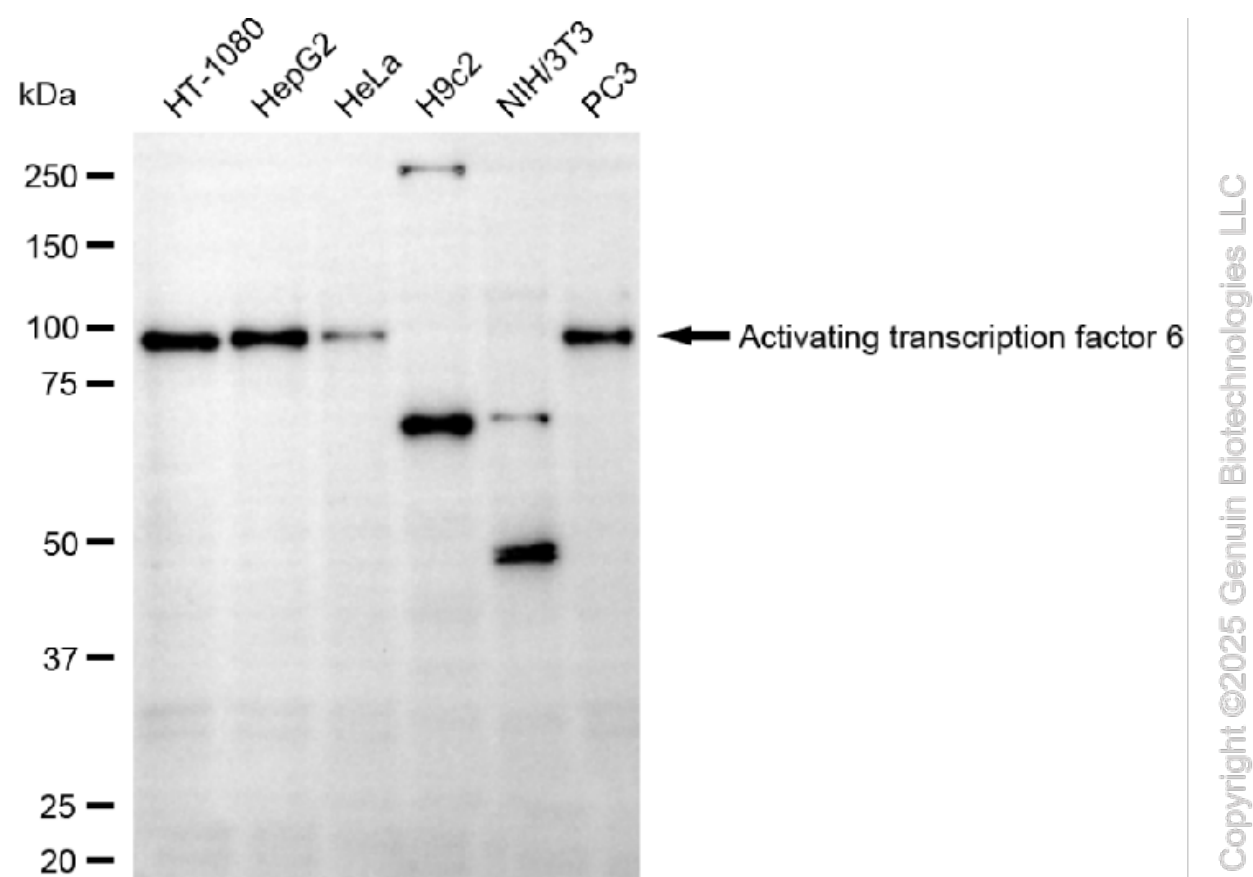
SUPPORT

SUPPORT@GENUINBIOTECH.COM
TEL: +1-540-855-7041

ORDERS

SALES@GENUINBIOTECH.COM
FAX: +1-540-855-7041

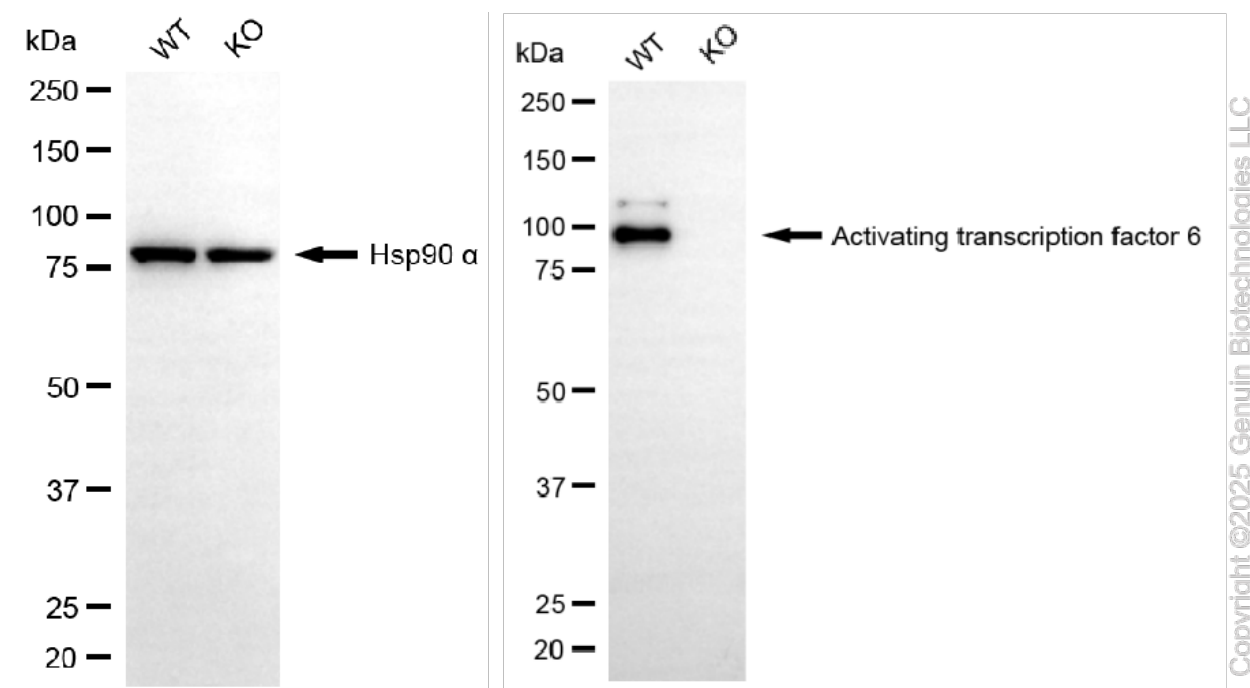
WWW.GENUINBIOTECH.COM



Western blotting analysis using anti-activating transcription factor 6 antibody (Cat#71259). Total cell lysates (30 µg) from various cell lines were loaded and separated by SDS-PAGE. The blot was incubated with anti-activating transcription factor 6 antibody (Cat#71259, 1:5,000) and HRP-conjugated goat anti-rabbit secondary antibody (Cat#201, 1:20,000) respectively. Image was developed using NaQ™ ECL Substrate Kit (Cat#716).

KO-Validated Anti-ATF6 Rabbit Monoclonal Antibody

PAGE 4



Western blotting analysis using anti-activating transcription factor 6 antibody (Cat#71259).

Activating transcription factor 6 expression in wild-type (WT) and activating transcription factor 6 (ATF6) knockout (KO) HeLa cells with 20 μ g of total cell lysates. Hsp90 α serves as a loading control. The blot was incubated with anti-activating transcription factor 6 antibody (Cat#71259, 1:5,000) and HRP-conjugated goat anti-rabbit secondary antibody (Cat#201, 1:20,000) respectively. Image was developed using NaQTM ECL Substrate Kit (Cat#716).

SUPPORT

SUPPORT@GENUINBIOTECH.COM
TEL: +1-540-855-7041

ORDERS

SALES@GENUINBIOTECH.COM
FAX: +1-540-855-7041

WWW.GENUINBIOTECH.COM