

KO-Validated Anti-Catenin Beta 1 Mouse Monoclonal Antibody



Catalog #: 71260

Aliases

CTNNB1; Catenin Beta 1; Beta-Catenin; Armadillo; CTNNB; Catenin (Cadherin-Associated Protein), Beta 1, 88kDa; Catenin Beta-1; Catenin (Cadherin-Associated Protein), Beta 1 (88kD); Catenin (Cadherin-Associated Protein), Beta 1; NEDSDV; MRD19; EVR7

Background

Gene Name: CTNNB1

NCBI Gene Entry: [1499](#)

UniProt Entry: [P35222](#)

Application Information

Molecular Weight: Predicted, 85 kDa; observed, 98 kDa

Clonality: Mouse monoclonal antibody

Clone ID: 25GB3905

Species Reactivity: Human, mouse, rat

Applications Tested: Western blotting (WB), flow cytometry (FCM), immunocytochemistry (IC), immunohistochemistry (IHC)

Immunogen

A synthesized peptide derived from human Beta-catenin

Isotype

Mouse IgG1

Storage Buffer

Supplied in PBS (pH 7.4) containing 50% glycerol, and 0.02% sodium azide.

Storage

Store at -20 °C for one year.

Recommended Dilutions

Western Blotting (WB): 1:500-1:2,500

Flow Cytometry (FCM): 1:2,000

Immunocytochemistry (IC): 1:100-1:1,000

Immunohistochemistry (IHC): 1:50-1:100

SUPPORT

SUPPORT@GENUINBIOTECH.COM
TEL: +1-540-855-7041

ORDERS

SALES@GENUINBIOTECH.COM
FAX: +1-540-855-7041

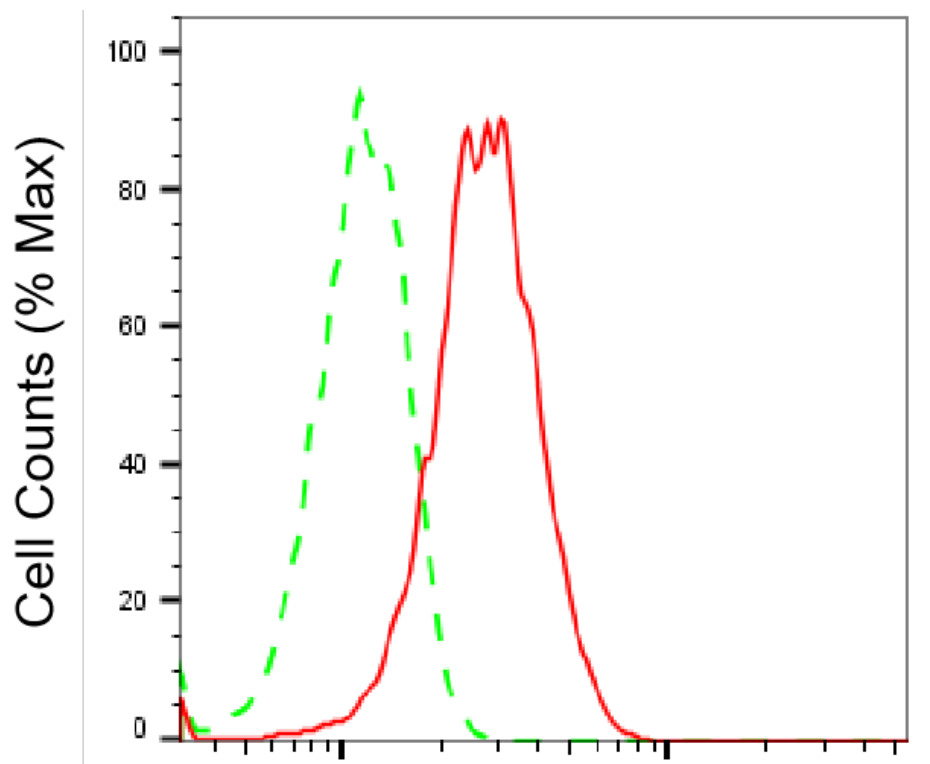
WWW.GENUINBIOTECH.COM

KO-Validated Anti-Catenin Beta 1 Mouse Monoclonal Antibody

PAGE 2

Note: This product is for research use only.

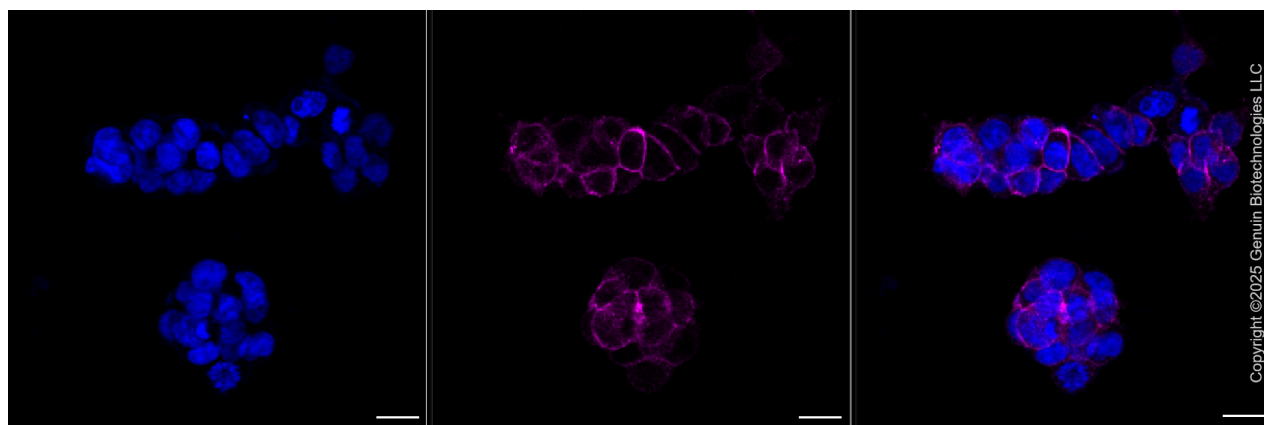
Validation Data



Copyright ©2025 Genuin Biotechnologies LLC

Catenin beta 1-Alexa Fluor® 647

Flow cytometric analysis of Catenin beta 1 expression in HAP-1 cells using anti-Catenin beta 1 antibody (Cat#71260, 1:2,000). Green, isotype control; red, Catenin beta 1.



Copyright ©2025 Genuin Biotechnologies LLC

Immunocytochemical staining of HAP-1 cells with anti-Catenin beta 1 antibody (Cat#71260, 1:1,000). Nuclei were stained blue with DAPI; Catenin beta 1 was stained magenta with Alexa Fluor® 647. Images were taken using Leica stellaris 5. Protein abundance based on laser Intensity and Smart Gain: Medium. Scale bar, 20 μ m.

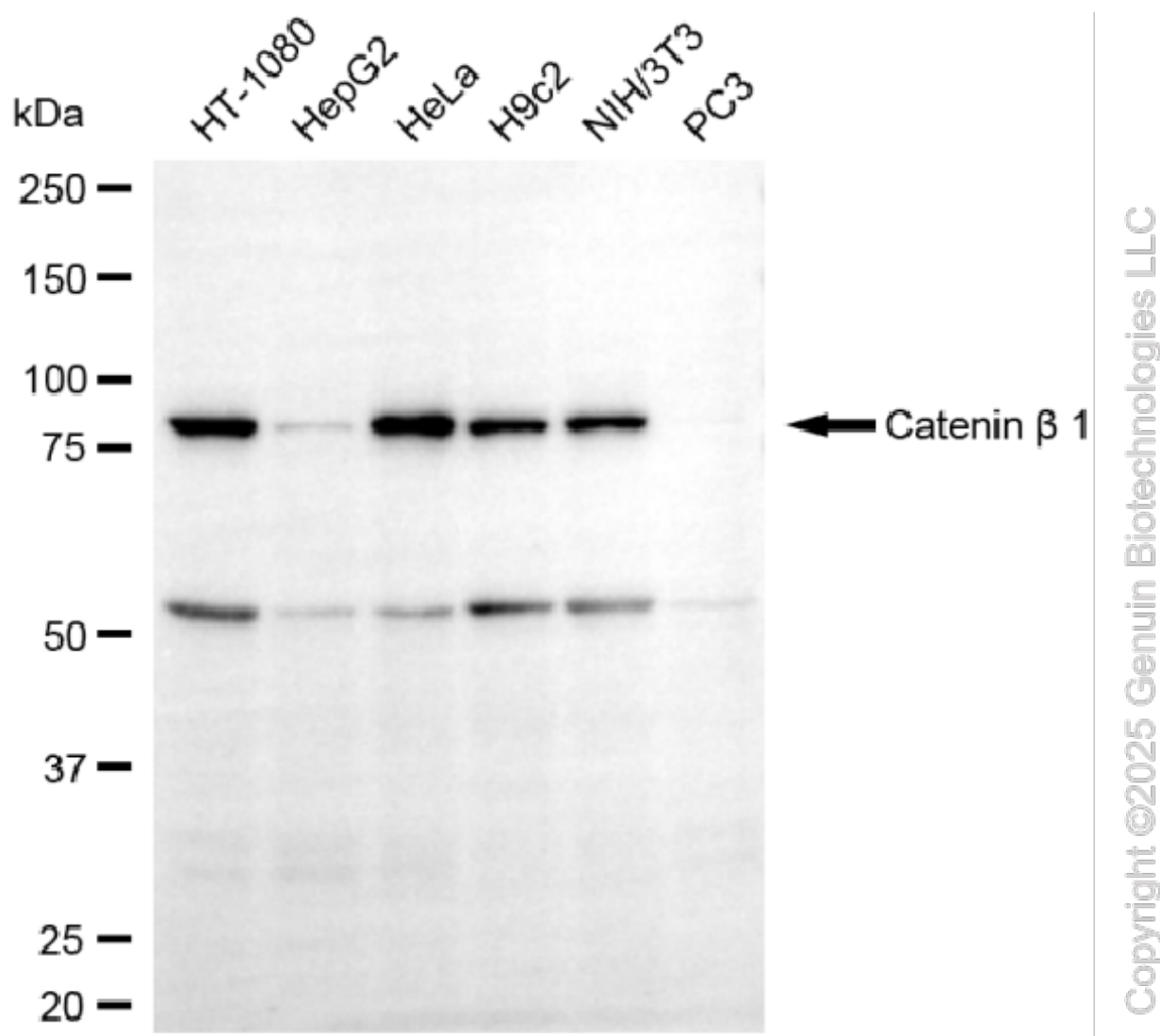
SUPPORT

SUPPORT@GENUINBIOTECH.COM
TEL: +1-540-855-7041

ORDERS

SALES@GENUINBIOTECH.COM
FAX: +1-540-855-7041

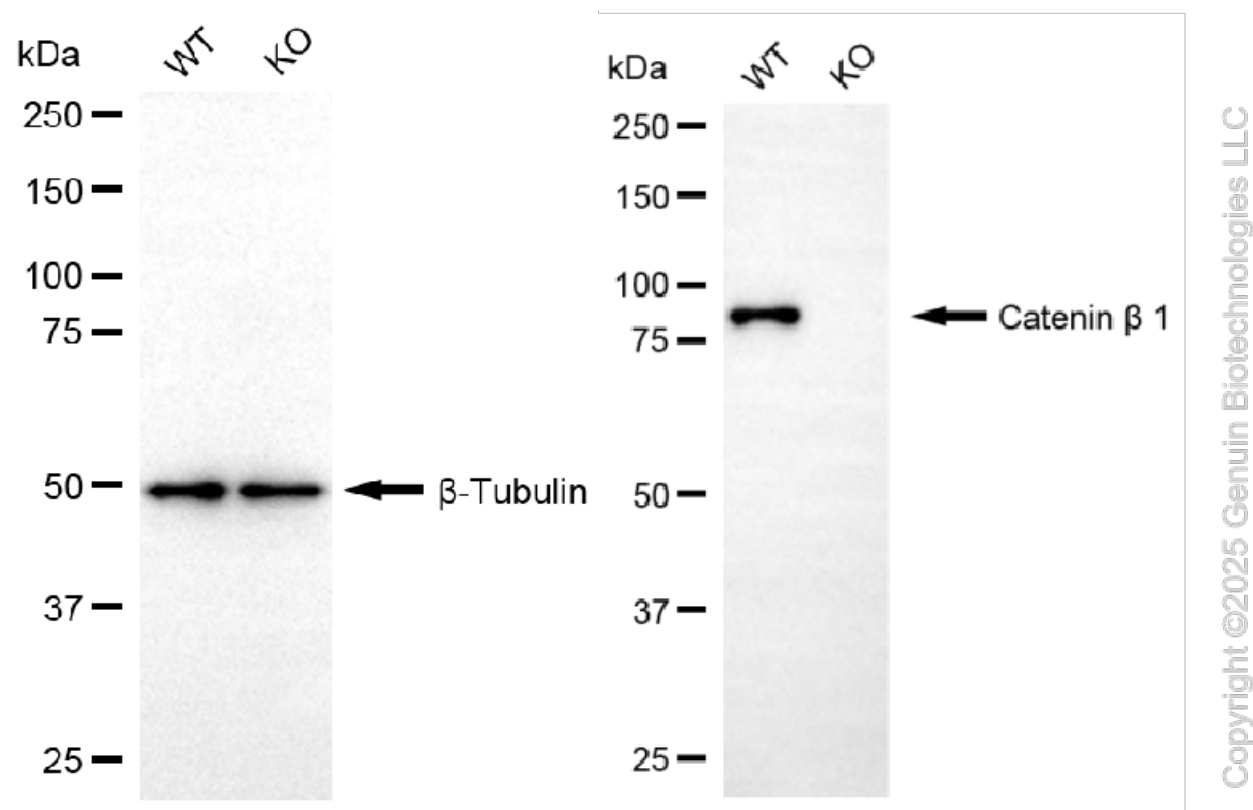
WWW.GENUINBIOTECH.COM



Western blotting analysis using anti-catenin beta 1 antibody (Cat#71260). Total cell lysates (30 μ g) from various cell lines were loaded and separated by SDS-PAGE. The blot was incubated with anti-catenin beta 1 antibody (Cat#71260, 1:2,500) and HRP-conjugated goat anti-mouse secondary antibody (Cat#101, 1:20,000) respectively. Image was developed using NaQTM ECL Substrate Kit (Cat#716).

KO-Validated Anti-Catenin Beta 1 Mouse Monoclonal Antibody

PAGE 4



Western blotting analysis using anti-catenin beta 1 antibody (Cat#71260). Catenin beta 1 expression in wild-type (WT) and catenin beta 1 (CTNNB1) knockout (KO) 293T cells with 20 μ g of total cell lysates. β -Tubulin serves as a loading control. The blot was incubated with anti-catenin beta 1 antibody (Cat#71260, 1:5,000) and HRP-conjugated goat anti-mouse secondary antibody (Cat#101, 1:20,000) respectively. Image was developed using NaQTM ECL Substrate Kit (Cat#716).

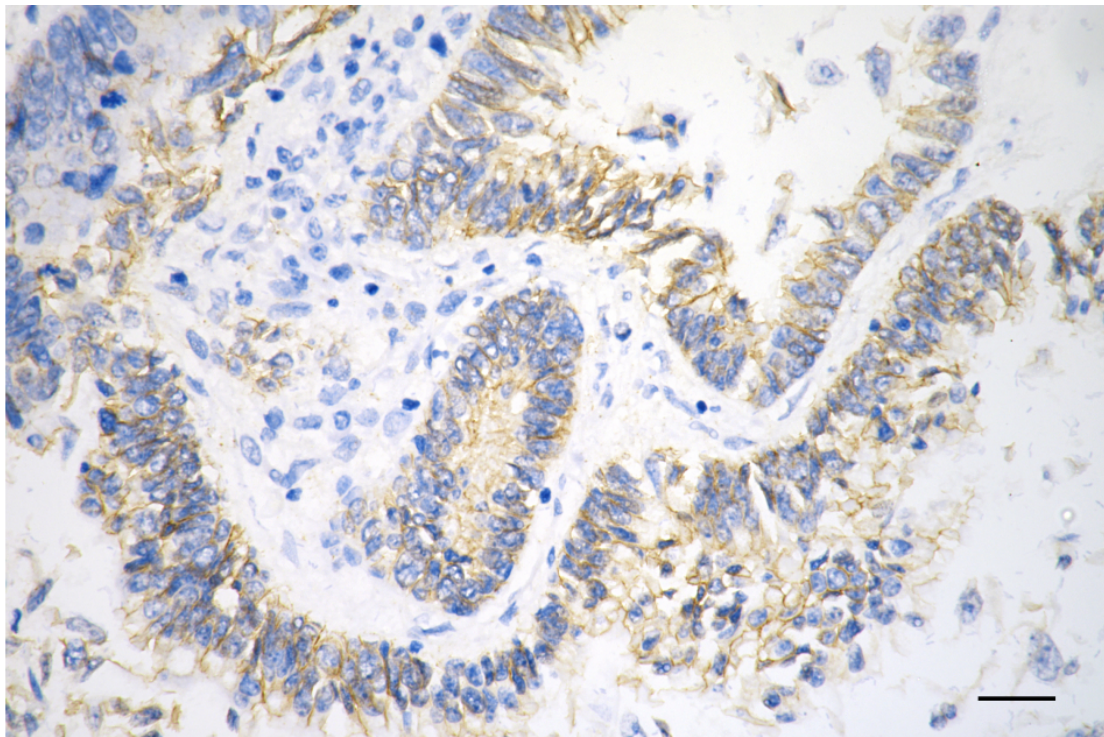
SUPPORT

SUPPORT@GENUINBIOTECH.COM
TEL: +1-540-855-7041

ORDERS

SALES@GENUINBIOTECH.COM
FAX: +1-540-855-7041

WWW.GENUINBIOTECH.COM



Copyright ©2025 Genuin Biotechnologies LLC

Immunohistochemistry was performed on paraffin-embedded human sigmoid colon carcinoma using anti-glial fibrillary acidic protein antibody (Cat#71260, 1:100). Antigen retrieval was done in sodium citrate buffer (pH 6.0). DAB was used for detection, with hematoxylin counterstaining. Images were acquired using a Nikon Ci-L Plus microscope (40× objective). Scale bar: 25 μ m.