

# KO-Validated Anti-Chromobox 3 Mouse Monoclonal Antibody



**Catalog #: 71261**

## Aliases

CBX3; Chromobox 3; HP1Hs-Gamma; HP1gamma; Heterochromatin Protein 1 Homolog Gamma; Chromobox Protein Homolog 3; Modifier 2 Protein; HECH; Chromobox Homolog 3 (HP1 Gamma Homolog, Drosophila); Chromobox Homolog 3 (Drosophila HP1 Gamma); Heterochromatin Protein HP1 Gamma; HP1 Gamma Homolog (Drosophila); Heterochromatin-Like Protein 1; Chromobox Homolog 3; HP1 Gamma Homolog; HP1-GAMMA; HP1 Gamma

## Background

NCBI Gene Entry: [11335](#)

UniProt Entry: [Q13185](#)

## Application Information

Molecular Weight: Predicted, 21 kDa; observed, 20 kDa

Clonality: Mouse monoclonal antibody

Clone ID: 25GB3950

Species Reactivity: Human, mouse, rat

Applications Tested: Western blotting (WB)

## Immunogen

Recombinant protein of human HP1 gamma

## Isotype

Mouse IgG

## Storage Buffer

Supplied in PBS (pH 7.4) containing 50% glycerol, and 0.02% sodium azide.

## Storage

Store at -20 °C for one year.

## Recommended Dilutions

Western Blotting (WB): 1:500-1:2,500

Immunocytochemistry (IC): 1:100-1:1,000

Flow Cytometry (FCM): 1:200-1:2,000

---

### SUPPORT

SUPPORT@GENUINBIOTECH.COM  
TEL: +1-540-855-7041

### ORDERS

SALES@GENUINBIOTECH.COM  
FAX: +1-540-855-7041

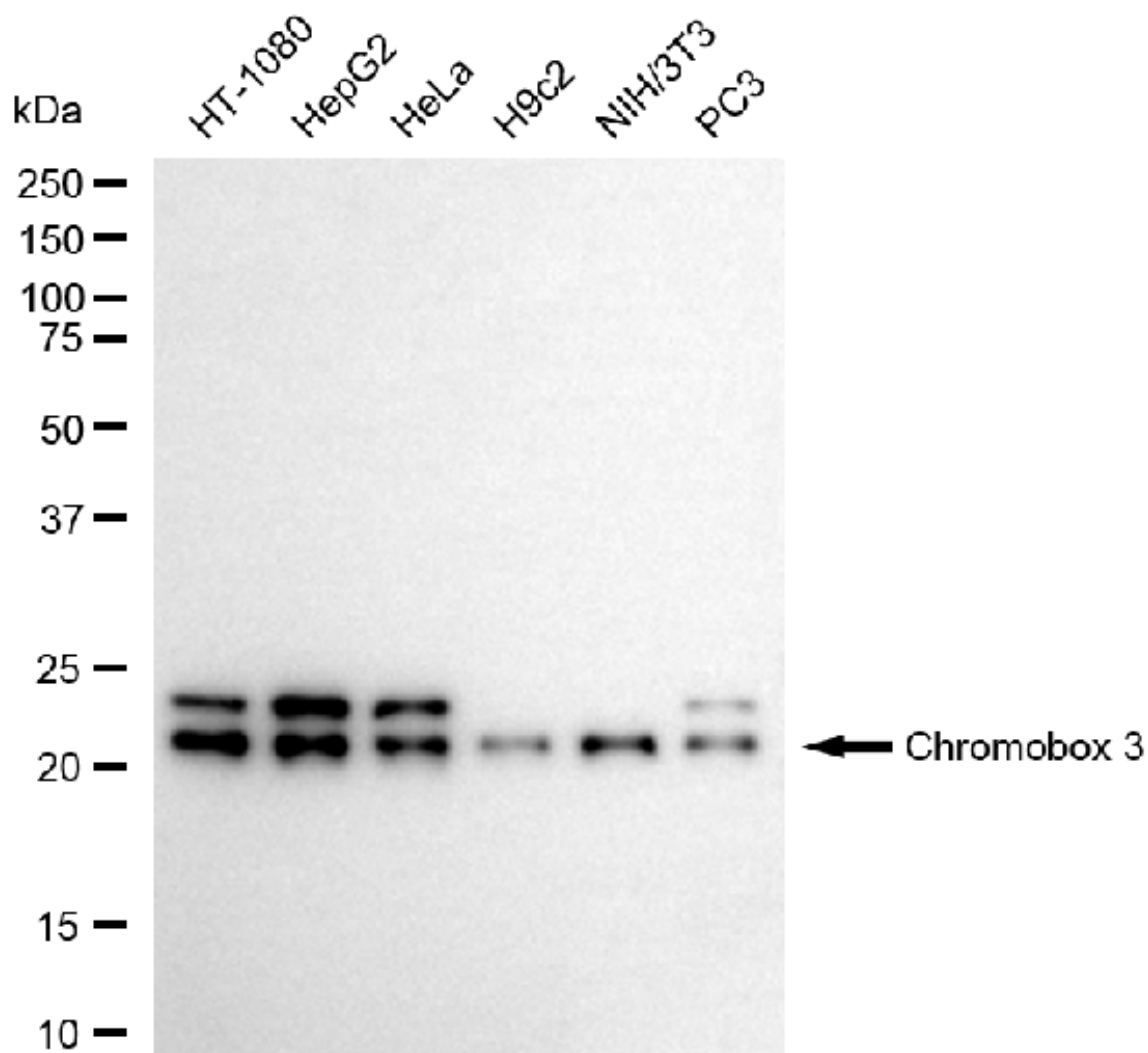
[WWW.GENUINBIOTECH.COM](http://WWW.GENUINBIOTECH.COM)

## KO-Validated Anti-Chromobox 3 Mouse Monoclonal Antibody

PAGE 2

**Note:** This product is for research use only.

### Validation Data



Copyright ©2025 Genuin Biotechnologies LLC

Western blotting analysis using anti-chromobox 3 antibody (Cat#71261). Total cell lysates (30 µg) from various cell lines were loaded and separated by SDS-PAGE. The blot was incubated with anti-chromobox 3 antibody (Cat#71261, 1:2,500) and HRP-conjugated goat anti-mouse secondary antibody (Cat#101, 1:20,000) respectively. Image was developed using FeQ™ ECL Substrate Kit (Cat#226).

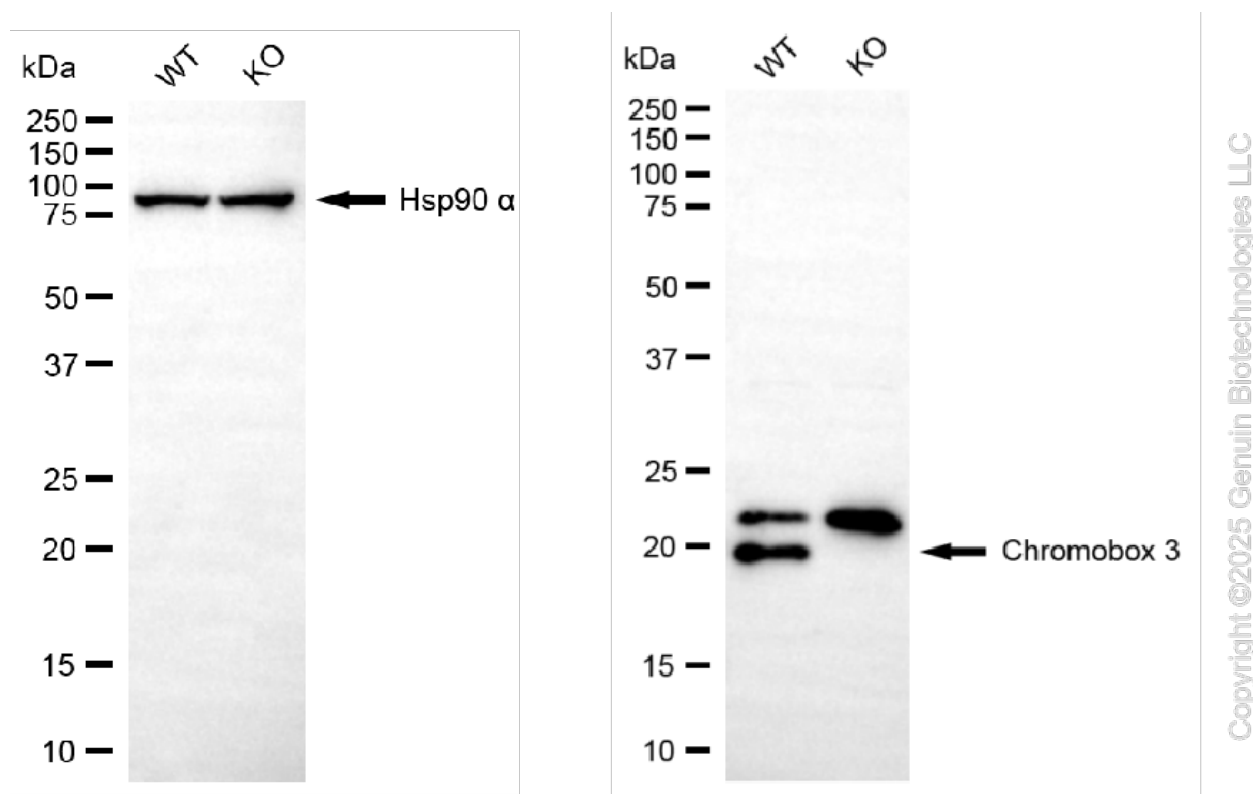
#### SUPPORT

SUPPORT@GENUINBIOTECH.COM  
TEL: +1-540-855-7041

#### ORDERS

SALES@GENUINBIOTECH.COM  
FAX: +1-540-855-7041

WWW.GENUINBIOTECH.COM



Western blotting analysis using anti-chromobox 3 antibody (Cat#71261). Chromobox 3 expression in wild-type (WT) and chromobox 3 (CBX3) knockout (KO) 293T cells with 20  $\mu$ g of total cell lysates. Hsp90  $\alpha$  serves as a loading control. The blot was incubated with anti-chromobox 3 antibody (Cat#71261, 1:5,000) and HRP-conjugated goat anti-mouse secondary antibody (Cat#101, 1:20,000) respectively. Image was developed using FeQ™ ECL Substrate Kit (Cat#226).