

# KO-Validated Anti-Phospho-IGF1 Receptor (Y1166) Rabbit Monoclonal Antibody



**Catalog #: 71265**

## Aliases

IGF1R; Insulin Like Growth Factor 1 Receptor; Insulin-Like Growth Factor 1 Receptor; JTK13; CD221; IGFIR; IGFR; IGF-I Receptor; EC 2.7.10.1; MGC18216; Insulin-Like Growth Factor I Receptor; CD221 Antigen; EC 2.7.10

## Background

Gene Name: IGF1R

NCBI Gene Entry: [3480](#)

UniProt Entry: [P08069](#)

## Application Information

Molecular Weight: Predicted, 155 kDa; observed, 95 kDa

Clonality: Rabbit monoclonal antibody

Clone ID: 25GB4080

Species Reactivity: Human, mouse, rat

Applications Tested: Western blotting (WB), flow cytometry (FCM)

## Immunogen

A synthesized peptide derived from human Phospho-IGF1 Receptor (Tyr1166)

## Isotype

Rabbit IgG

## Storage Buffer

Supplied in PBS (pH 7.4) containing 50% glycerol, and 0.02% sodium azide.

## Storage

Store at -20 °C for one year.

## Recommended Dilutions

Western Blotting (WB): 1:1,000-1:5,000

Flow Cytometry (FCM): 1:2,000

**Note:** This product is for research use only.

## Validation Data

---

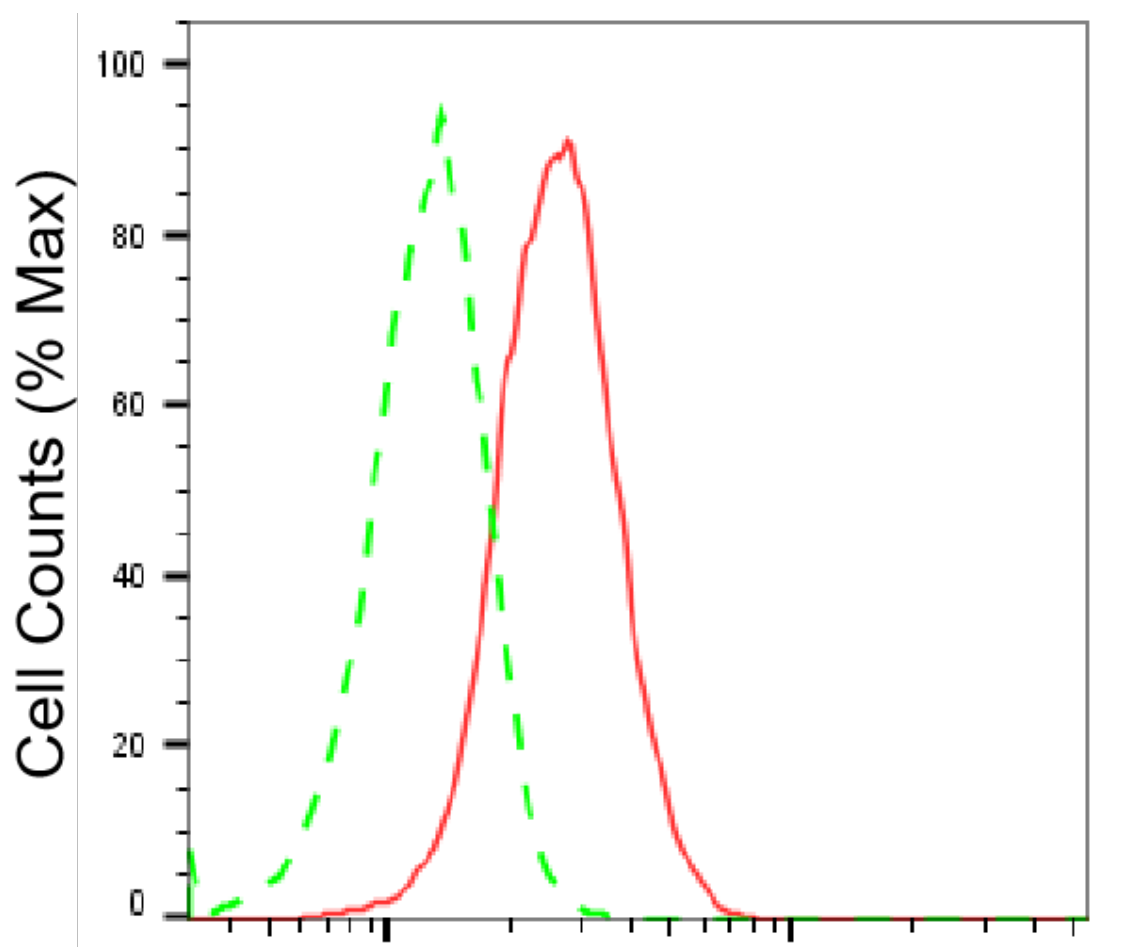
### SUPPORT

SUPPORT@GENUINBIOTECH.COM  
TEL: +1-540-855-7041

### ORDERS

SALES@GENUINBIOTECH.COM  
FAX: +1-540-855-7041

[WWW.GENUINBIOTECH.COM](http://WWW.GENUINBIOTECH.COM)

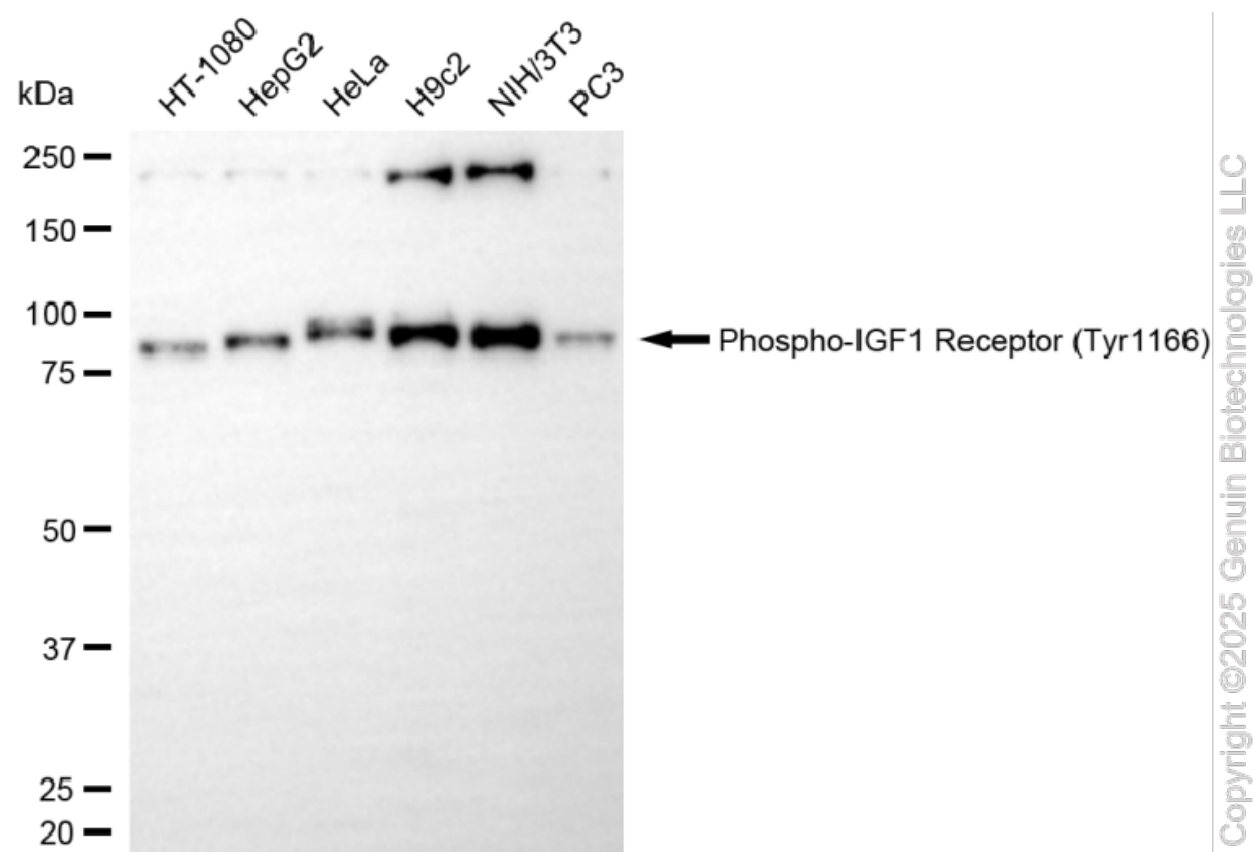


## Phospho-IGF1 Receptor (Tyr1166)- Alexa Fluor® 647

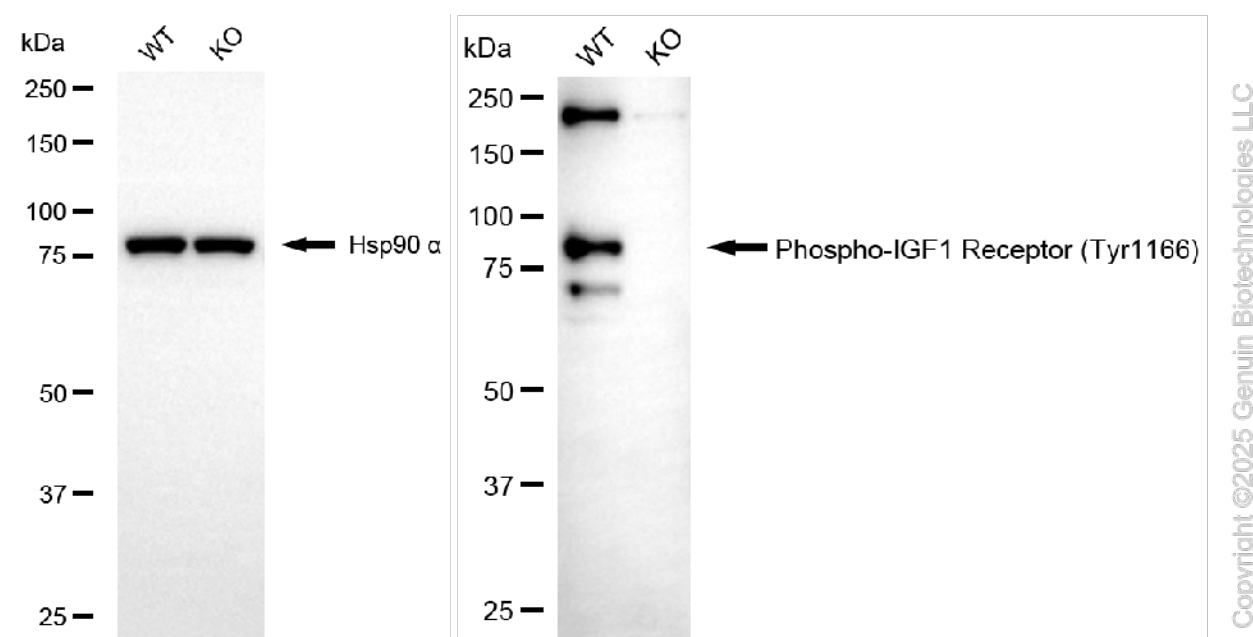
Flow cytometric analysis of Phospho-IGF1 Receptor (Tyr1166) expression in HAP-1 cells using anti-Phospho-IGF1 Receptor (Tyr1166) antibody (Cat#71265, 1:2,000). Green, isotype control; red, Phospho-IGF1 Receptor (Tyr1166).

## KO-Validated Anti-Phospho-IGF1 Receptor (Y1166) Rabbit Monoclonal Antibody

PAGE 3



Western blotting analysis using anti-phospho-IGF1 Receptor (Tyr1166) antibody (Cat#71265). Total cell lysates (30 µg) from various cell lines were loaded and separated by SDS-PAGE. The blot was incubated with anti-phospho-IGF1 Receptor (Tyr1166) antibody (Cat#71265, 1:5,000) and HRP-conjugated goat anti-rabbit secondary antibody (Cat#201, 1:20,000) respectively. Image was developed using NaQ™ ECL Substrate Kit (Cat#716).



### SUPPORT

SUPPORT@GENUINBIOTECH.COM  
TEL: +1-540-855-7041

### ORDERS

SALES@GENUINBIOTECH.COM  
FAX: +1-540-855-7041

[WWW.GENUINBIOTECH.COM](http://WWW.GENUINBIOTECH.COM)

## **KO-Validated Anti-Phospho-IGF1 Receptor (Y1166) Rabbit Monoclonal Antibody**

PAGE 4

Western blotting analysis using anti-phospho-IGF1 Receptor (Tyr1166) antibody (Cat#71265). phospho-IGF1 Receptor (Tyr1166) expression in wild-type (WT) and IGF1R knockout (KO) HT-1080 cells with 30 µg of total cell lysates. Hsp90  $\alpha$  serves as a loading control. The blot was incubated with anti-phospho-IGF1 Receptor (Tyr1166) antibody (Cat#71265, 1:5,000) and HRP-conjugated goat anti-rabbit secondary antibody (Cat#201, 1:20,000) respectively. Image was developed using FeQ™ ECL Substrate Kit (Cat#226).

---

### **SUPPORT**

SUPPORT@GENUINBIOTECH.COM  
TEL: +1-540-855-7041

### **ORDERS**

SALES@GENUINBIOTECH.COM  
FAX: +1-540-855-7041

**WWW.GENUINBIOTECH.COM**