

KO-Validated Anti-Placental alkaline phosphatase (PLAP) Recombinant Rabbit



Catalog #: 71270

Aliases

Alkaline Phosphatase, Placental; PLAP; PALP; Alkaline Phosphatase, Placental Type; Alkaline Phosphatase Regan Isozyme; Placental Alkaline Phosphatase 1; EC 3.1.3.1; PLAP-1; Alkaline Phosphatase, Placental (Regan Isozyme); Intestinal-Type Alkaline Phosphatase; Intestinal Alkaline Phosphatase; Placental Alkaline Phosphatase; Alkaline Phosphomonoesterase; Glycerophosphatase; Regan Isozyme; ALPI; ALP; IAP

Background

Gene Name: ALPP

NCBI Gene Entry: [250](#)

UniProt Entry: [P05187](#)

Application Information

Molecular Weight: Predicted, 58 kDa; observed, 70 kDa

Clonality: Rabbit monoclonal antibody

Clone ID: 25GB4200

Species Reactivity: Human

Applications Tested: Western blotting (WB), flow cytometry (FCM), immunocytochemistry (IC)

Immunogen

A synthesized peptide derived from human Placental alkaline phosphatase (PLAP)

Isotype

Rabbit IgG

Storage Buffer

Supplied in PBS (pH 7.4) containing 50% glycerol, and 0.02% sodium azide.

Storage

Store at -20 °C for one year.

Recommended Dilutions

Western Blotting (WB): 1:1,000-1:5,000

Flow Cytometry (FCM): 1:2,000

Immunocytochemistry (IC): 1:100-1:1,000

SUPPORT

SUPPORT@GENUINBIOTECH.COM
TEL: +1-540-855-7041

ORDERS

SALES@GENUINBIOTECH.COM
FAX: +1-540-855-7041

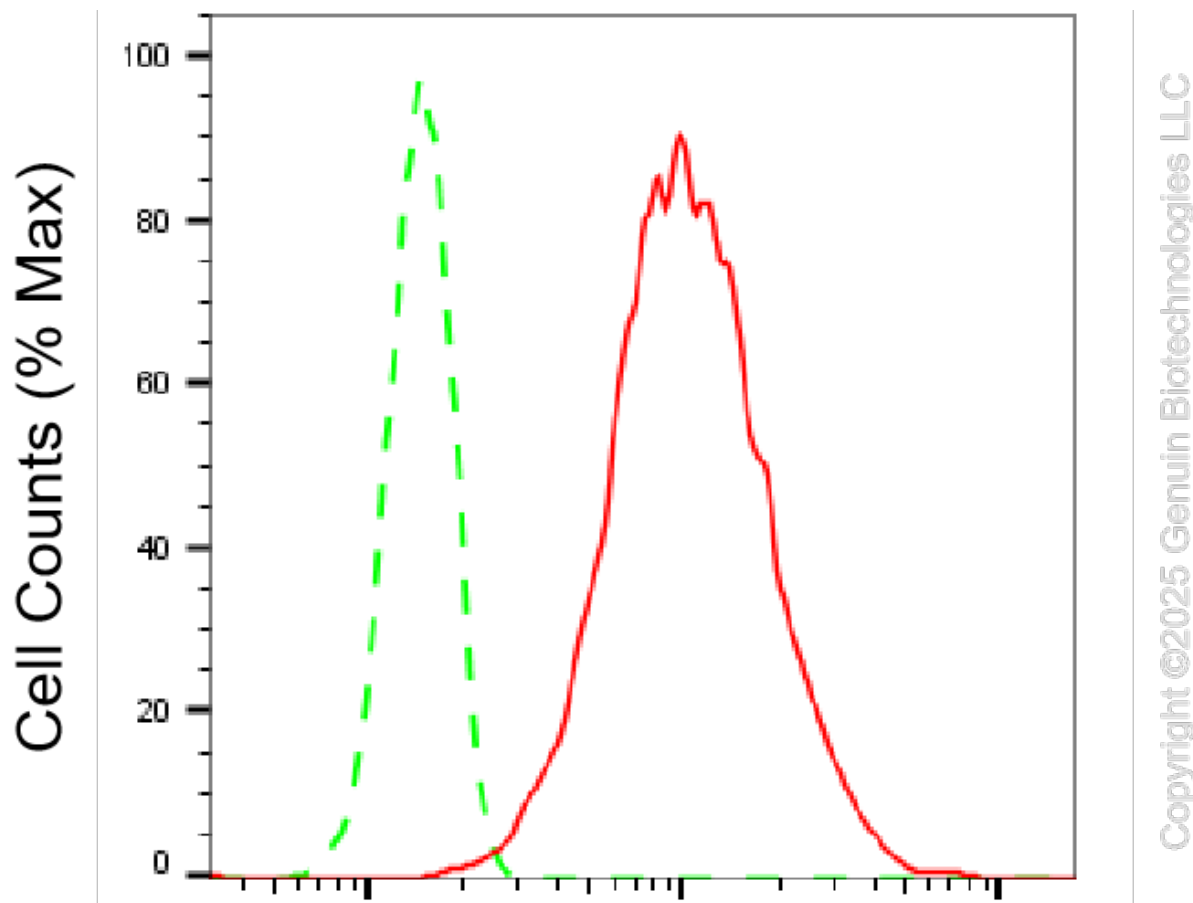
WWW.GENUINBIOTECH.COM

KO-Validated Anti-Placental alkaline phosphatase (PLAP) Recombinant Rabbit

PAGE 2

Note: This product is for research use only.

Validation Data



Placental alkaline phosphatase (PLAP)- Alexa Fluor® 647

Flow cytometric analysis of Placental alkaline phosphatase (PLAP) expression in HepG2 cells using Placental alkaline phosphatase (PLAP) antibody (Cat#71270, 1:2,000). Green, isotype control; red, Placental alkaline phosphatase (PLAP).

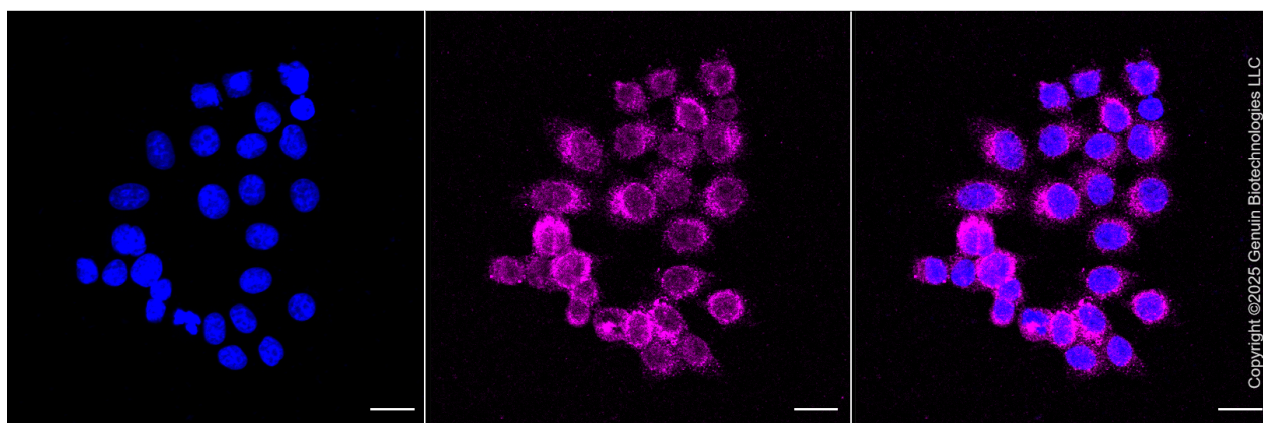
SUPPORT

SUPPORT@GENUINBIOTECH.COM
TEL: +1-540-855-7041

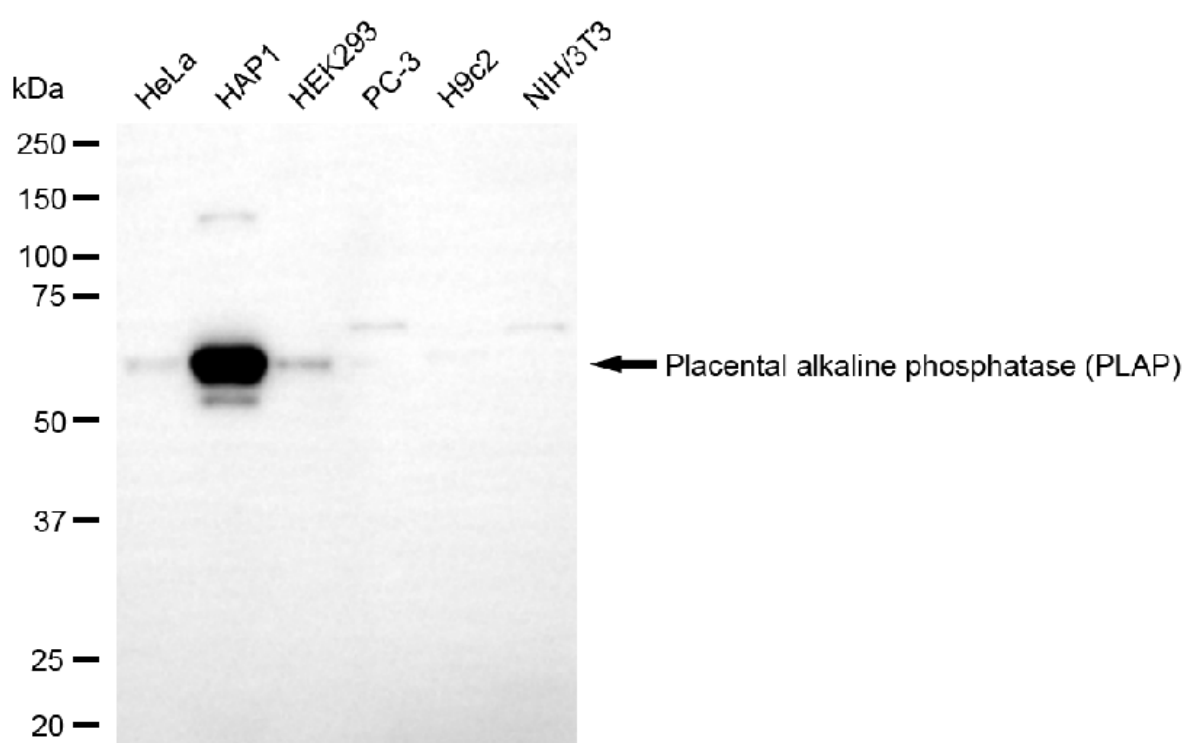
ORDERS

SALES@GENUINBIOTECH.COM
FAX: +1-540-855-7041

WWW.GENUINBIOTECH.COM



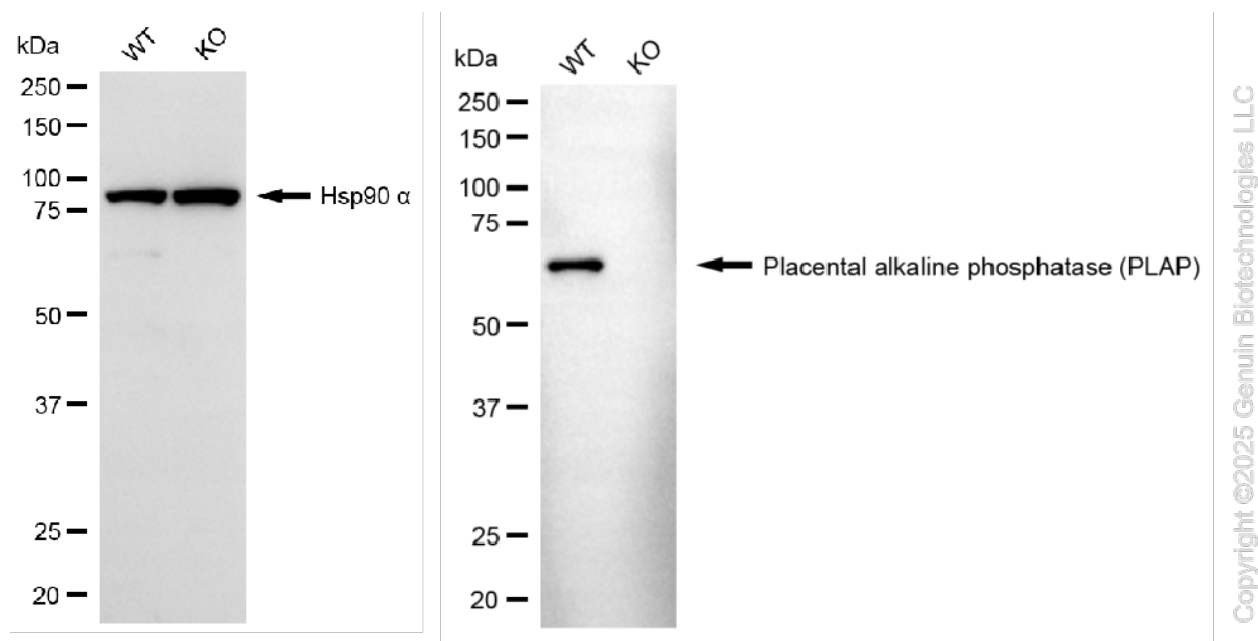
Immunocytochemical staining of HepG2 cells with anti-Placental alkaline phosphatase (PLAP) antibody (Cat#71270, 1:1,000). Nuclei were stained blue with DAPI; Placental alkaline phosphatase (PLAP) was stained magenta with Alexa Fluor® 647. Images were taken using Leica stellaris 5. Protein abundance based on laser Intensity and smart gain: Medium. Scale bar, 20 μ m.



Western blotting analysis using anti-placental alkaline phosphatase (PLAP) antibody (Cat#71270). Total cell lysates (30 μ g) from various cell lines were loaded and separated by SDS-PAGE. The blot was incubated with anti-placental alkaline phosphatase (PLAP) antibody (Cat#71270, 1:5,000) and HRP-conjugated goat anti-rabbit secondary antibody (Cat#201, 1:20,000) respectively. Image was developed using FeQ™ ECL Substrate Kit (Cat#226).

KO-Validated Anti-Placental alkaline phosphatase (PLAP) Recombinant Rabbit

PAGE 4



Western blotting analysis using anti-placental alkaline phosphatase (PLAP) antibody (Cat#71270). Placental alkaline phosphatase (PLAP) expression in wild type (WT) and ALPP knockout (KO) HSHC cells with 20 μ g of total cell lysates. Hsp90 α serves as a loading control. The blot was incubated with anti-placental alkaline phosphatase (PLAP) antibody (Cat#71270, 1:5,000) and HRP-conjugated goat anti-rabbit secondary antibody (Cat#201, 1:20,000) respectively. Image was developed using FeQTM ECL Substrate Kit (Cat#226).

SUPPORT

SUPPORT@GENUINBIOTECH.COM
TEL: +1-540-855-7041

ORDERS

SALES@GENUINBIOTECH.COM
FAX: +1-540-855-7041

WWW.GENUINBIOTECH.COM